

911-R Series

COPPERLOC Non-Removable Copper Push End
Reducing Tee CxCxC (3/4"x3/4"x1/2" through 1"x1"x3/4")

SUBMITTAL SHEET



Job Name:	
Job Location:	
Engineer:	
Contractor:	
Tag:	
PO#:	
Rep:	
Wholesale Dist.:	

DESCRIPTION

The CopperLoc® 911-R Non-Removable Push Reducing Tee features a lead-free dezincification resistant copper body, a stainless steel grab ring, a nylon separation ring and an EPDM O-Ring. CopperLoc® products are manufactured utilizing proven ASTM materials and standards. Proudly made in the USA.

FEATURES

- Sizes: 3/4"x3/4"x1/2", 1"x1"x1/2", 1"x1"x3/4"
- Lead free construction
- No special tools required

PERFORMANCE RATING

- Maximum Pressure: 200 psi (13.7 bar)
- Temperature Range: 32°F - 250°F, (0°C - 121°C)

APPROVALS

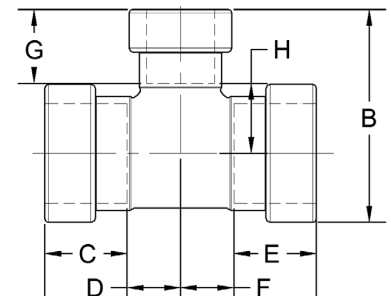
- cUPC® Compliant
- ARRA Compliant
- NSF/ANSI 372 Lead Free
- NSF/ANSI 61 Water Quality
- ASSE 1061
- IAPMO File Listings: 4951
- Guide MHKZ: No. 6 oil at 250°F

STANDARD MATERIALS LIST

Body	UNS C12200 Copper
Grab Ring	Stainless Steel
Support Ring	Nylon
O-Ring	EPDM
Lubrication	Silicone, ANSI/NSF-61 Listed

DIMENSIONS

ITEM NO.	SIZE (IN.)	DIMENSIONS (IN.)											WT. (LBS.)
		A	B	C	D	E	F	G	H	HEIGHT	WIDTH	DEPTH	
10170870	911-R 3/4x3/4x1/2 CXCXC	2.13	1.75	0.72	0.42	0.72	0.42	0.66	0.64	1.75	2.13	1.19	0.16
10170875	911-R 1x1x1/2 CXCXC	2.27	2.05	0.78	0.36	0.78	0.36	0.66	0.75	2.05	2.27	1.60	0.26
10170880	911-R 1X1X3/4 CXCXC	2.55	2.16	0.78	0.52	0.78	0.52	0.72	0.80	2.16	2.55	1.60	0.30



* LEAD FREE: The wetted surfaces of this product shall contain no more than 0.25% lead by weighted average. Complies with Federal Public Law 111-380. ANSI 3rd party approved and listed.

Customer Service (704) 841-6000
www.apolloflowcontrols.com

This specification is provided for reference only. Conbraco Industries Inc. reserves the right to change any portion of this specification without notice and without incurring obligation to make such changes to Conbraco products previously or subsequently sold. Please visit apolloflowcontrols.com for the most current information.

