

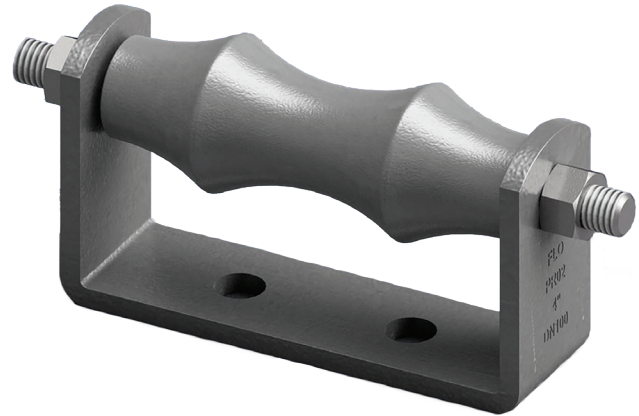
# FIGURE 7902 ROLLER CHAIR



## ROLLER CHAIR

### FEATURES

- For support of pipe where longitudinal movement due to expansion and contraction may occur, but where no vertical adjustment is required
- Used when supporting pipe from below is the best option
- Hot-dipped galvanized roller and chair
- Material—Cast iron and carbon steel
- Grommet—Vinyl
- Finish—Hot-dipped galvanize



### PRODUCT SPECIFICATIONS

#### Standards

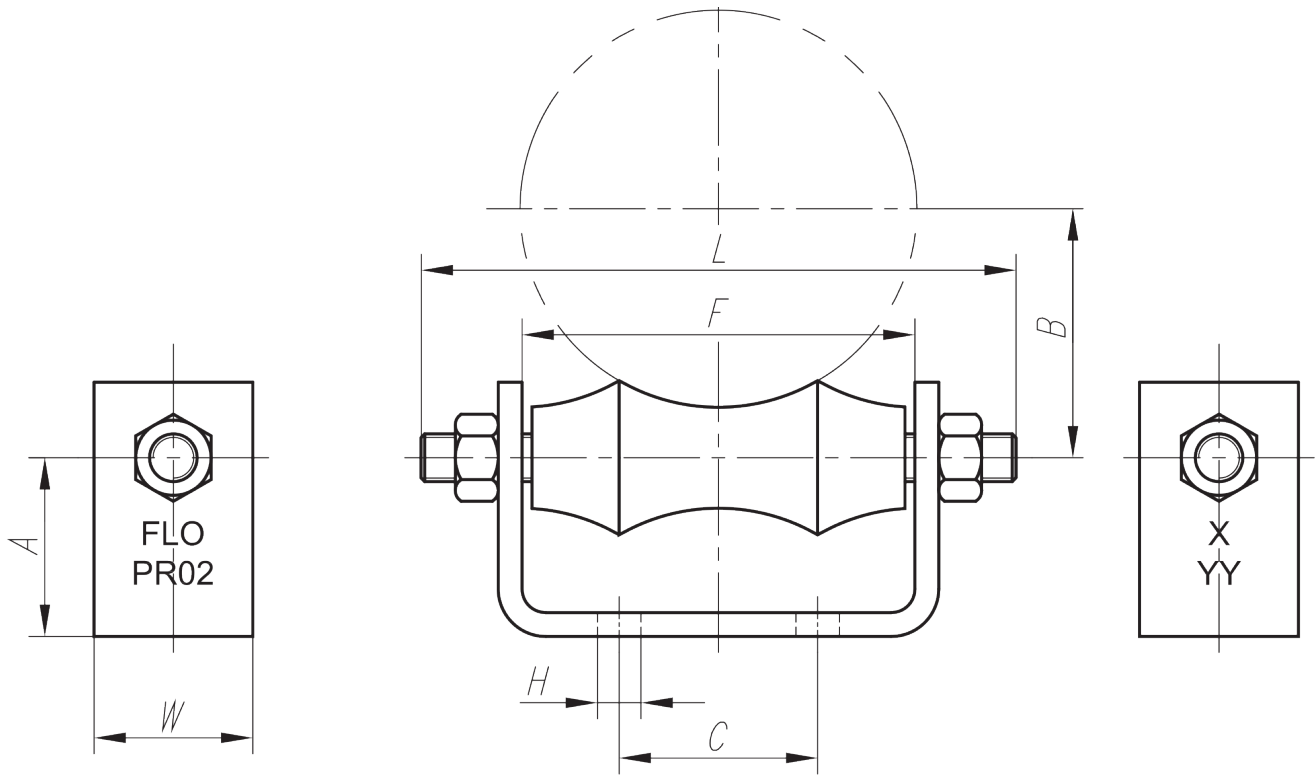
- Design—MSS-SP-58 Type 44
- Federal Specification—A-A-1192A Type 44 & WW-H-171-E Type 45
- Selection & Application—MSS-SP-69 Type 44

# FIGURE 7902 ROLLER CHAIR



## ROLLER CHAIR

## PARTS BREAKDOWN



## DIMENSIONS

Catalog Number	Pipe Size		A		B		C		H		F		W		L		Wt.		Max Rec. Load	
	in.	mm	in.	mm	in.	mm	in.	mm	in.	mm	in.	mm	in.	mm	in.	mm	lbs	kg.	lbs	kN
FNW7902EP0200	2"	DN50	1.57"	40	1.62"	41	1.18"	30	0.43"	11	2.84"	72	1.18"	30	4.72"	120	1	0.45	600	2.67
FNW7902EP0201	2.5"	DN65	1.62"	41	2"	51	1.18"	30	0.43"	11	3.35"	85	1.18"	30	5.51"	140	1.3	0.6	600	2.67
FNW7902EP0202	3"	DN80	1.77"	45	2.25"	57	1.97"	50	0.43"	11	3.94"	100	1.18"	30	5.91"	150	1.5	0.68	600	2.67
FNW7902EP0203	4"	DN100	2.56"	65	2.75"	70	1.97"	50	0.52"	13	4.92"	125	1.57"	40	7.48"	190	2.6	1.18	700	3.12
FNW7902EP0204	5"	DN125	2.56"	65	3.5"	89	2.76"	70	0.52"	13	6.02"	153	1.57"	40	9.25"	235	3.4	1.54	700	3.12
FNW7902EP0205	6"	DN150	2.75"	70	4"	102	3.15"	80	0.52"	13	7.09"	180	1.97"	50	10.83"	275	5.5	2.5	1000	4.45
FNW7902EP0206	8"	DN200	2.95"	75	5.12"	130	3.15"	80	0.67"	17	9.06"	230	1.97"	50	13.00"	330	8.4	3.81	1300	5.78
FNW7902EP0207	10"	DN250	3.54"	90	6.38"	162	5.12"	130	0.71"	17	11.22"	285	1.97"	50	15.16"	385	13	5.9	1700	7.56
FNW7902EP0208	12"	DN300	3.94"	100	7.5"	191	5.51"	140	0.71"	17	13.23"	336	1.97"	50	17.52"	445	18	8.17	2300	10.2