

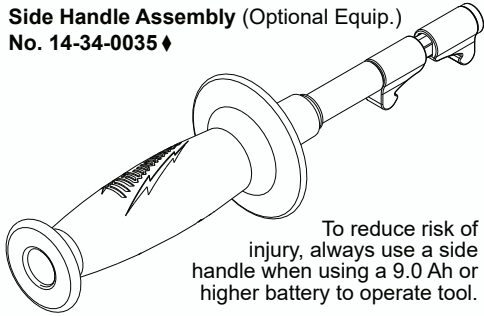


SERVICE PARTS LIST

BULLETIN NO.
54-24-2730

SPECIFY CATALOG NO. AND SERIAL NO. WHEN ORDERING PARTS		REVISED BULLETIN	DATE
M18™ Compact Brushless Hammer-Drill			Nov. 2018
CATALOG NO.	2702-20	STARTING SERIAL NO.	G40A
		WIRING INSTRUCTION SEE PAGE 2	

Side Handle Assembly (Optional Equip.) No. 14-34-0035 ♦



To reduce risk of injury, always use a side handle when using a 9.0 Ah or higher battery to operate tool.

00 0

EXAMPLE:

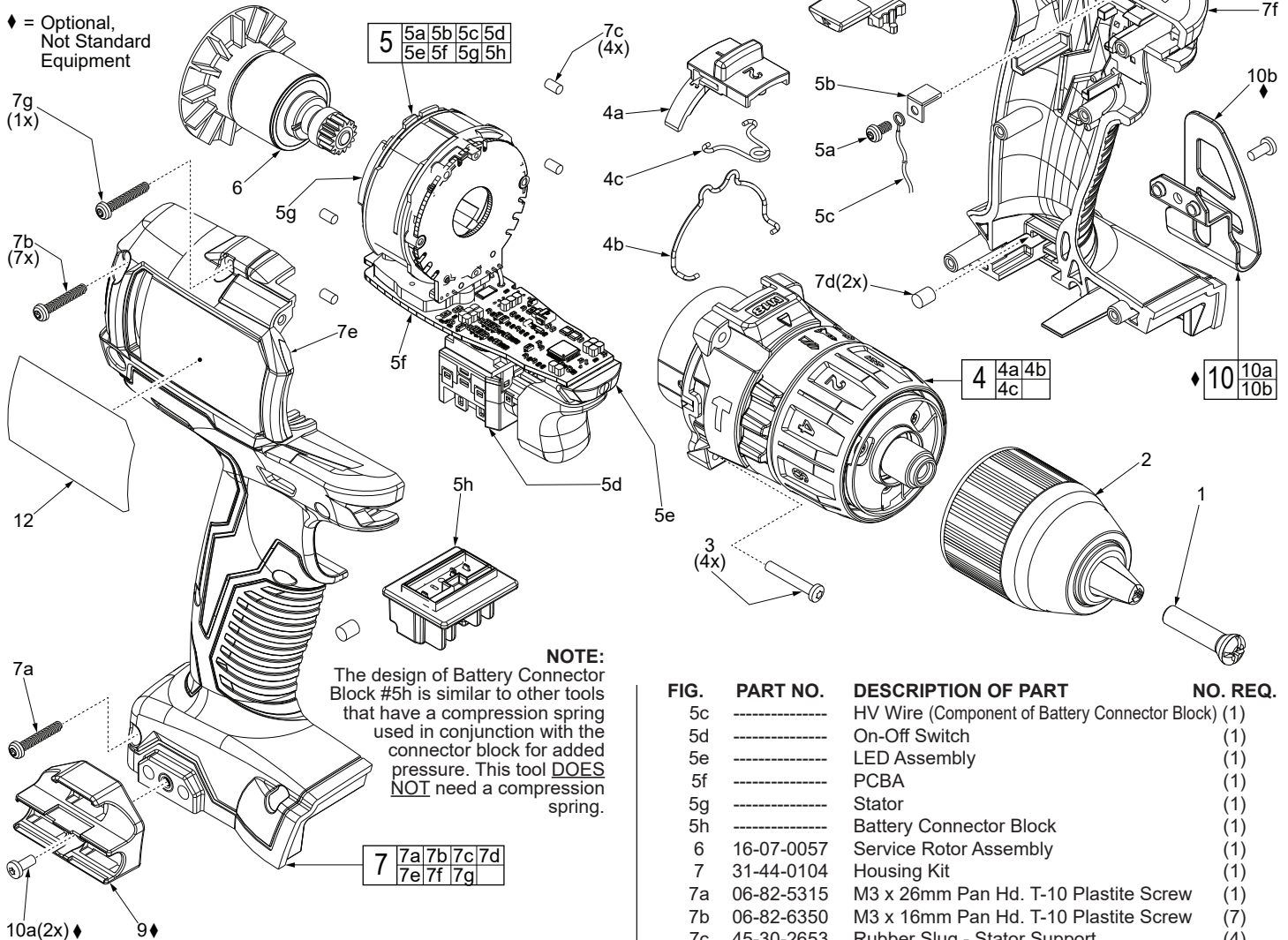
Component Parts (Small #) Are Included
When Ordering The Assembly (Large #).

NOTE:

The design of Shuttle #8 is similar to other tools that have a spring plate used in conjunction with the shuttle. This tool DOES NOT need a spring plate.



♦ = Optional,
Not Standard
Equipment



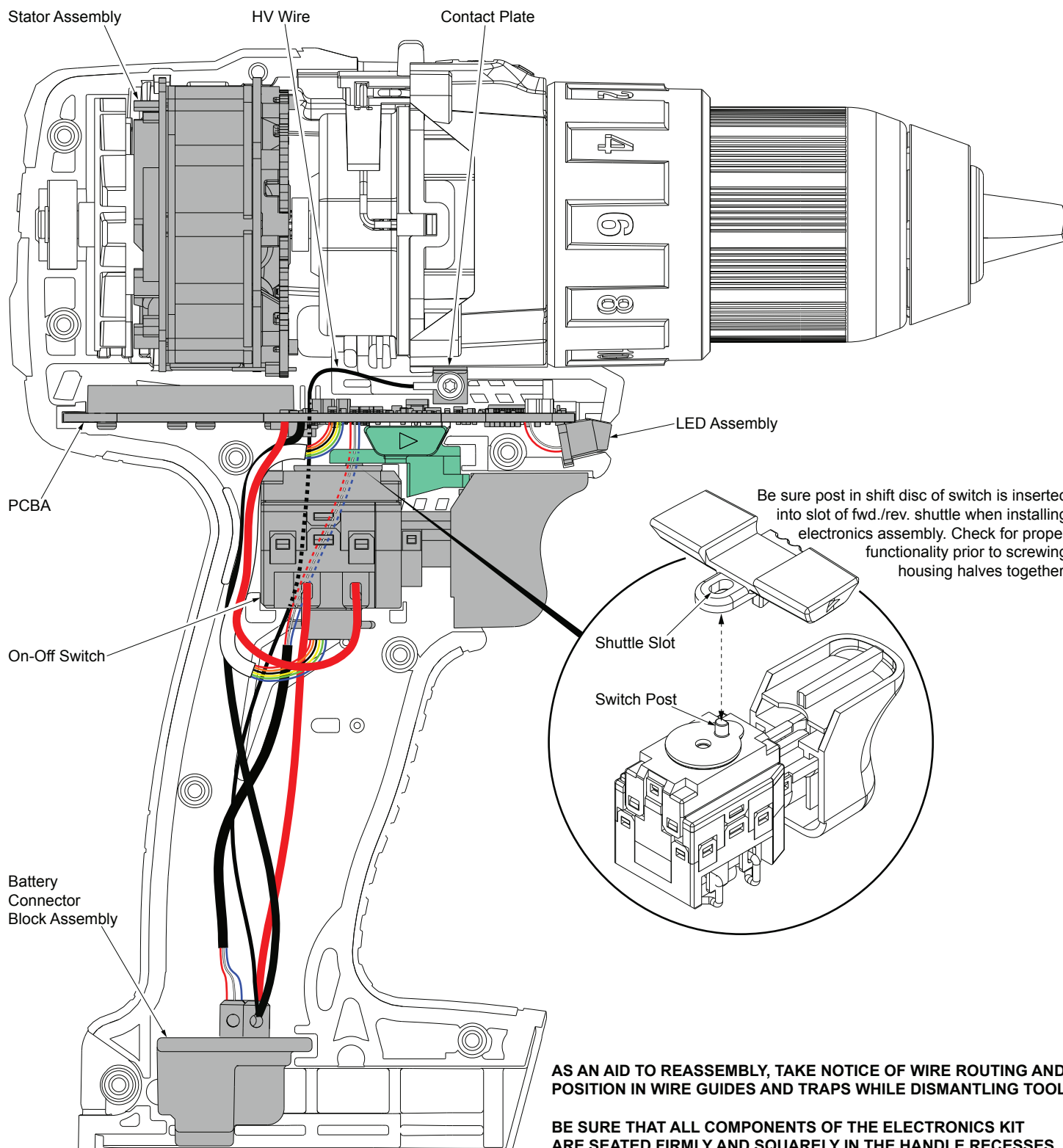
NOTE:

The design of Battery Connector Block #5h is similar to other tools that have a compression spring used in conjunction with the connector block for added pressure. This tool DOES NOT need a compression spring.

FIG.	PART NO.	DESCRIPTION OF PART	NO. REQ.
1	05-88-1500	M6 x 27mm LH Chuck Screw	(1)
2	42-66-0023	1/2" Keyless Chuck	(1)
3	06-82-0135	M3 x 18mm Pan Hd. Plastite T-10 Screw	(4)
4	14-29-0052	Gearbox Assembly	(1)
4a	45-24-2607	Speed Selector Slide	(1)
4b	44-10-2607	Speed Change Lever	(1)
4c	40-50-2607	Torsion Spring	(1)
5	14-20-0037	Electronics Assembly Consisting of: On-Off Switch, PCBA, Stator, LED Assembly, Battery Connector Block and HV Contact Plate with Screw	(1)
5a	06-82-0062	M3 x 8mm Pan Hd. T-10 ST Screw	(1)
5b	40-50-0073	HV Contact Plate	(1)

FIG.	PART NO.	DESCRIPTION OF PART	NO. REQ.
5c	-----	HV Wire (Component of Battery Connector Block)	(1)
5d	-----	On-Off Switch	(1)
5e	-----	LED Assembly	(1)
5f	-----	PCBA	(1)
5g	-----	Stator	(1)
5h	-----	Battery Connector Block	(1)
6	16-07-0057	Service Rotor Assembly	(1)
7	31-44-0104	Housing Kit	(1)
7a	06-82-5315	M3 x 26mm Pan Hd. T-10 Plastite Screw	(1)
7b	06-82-6350	M3 x 16mm Pan Hd. T-10 Plastite Screw	(7)
7c	45-30-2653	Rubber Slug - Stator Support	(4)
7d	45-30-1000	Rubber Slug - Battery Connector Block Support	(2)
7e	-----	Housing Halve - Right	(1)
7f	-----	Housing Halve - Left	(1)
7g	06-82-0135	M3 x 18mm Pan Hd. Plastite T-10 Screw	(1)
8	42-42-0082	Forward/Reverse Shuttle	(1)
9	43-72-0061	Bit Holder Kit (Optional)	(1)
10	42-70-0101	Belt Clip Kit (Optional)	(1)
10a	06-82-0130	6-32 x 5/16" Pan Hd. T-15 Screw (Optional)	(2)
10b	-----	Belt Clip (Optional)	(1)
11	42-55-2701	Blow Molded Carrying Case	(1)
12	12-20-2701	Service Nameplate	(1)

MILWAUKEE ELECTRIC TOOL CORPORATION
13135 W. Lisbon Road, Brookfield, WI 53005
Drwg. 3



AS AN AID TO REASSEMBLY, TAKE NOTICE OF WIRE ROUTING AND POSITION IN WIRE GUIDES AND TRAPS WHILE DISMANTLING TOOL.

BE SURE THAT ALL COMPONENTS OF THE ELECTRONICS KIT ARE SEATED FIRMLY AND SQUARELY IN THE HANDLE RECESSES.

AVOID PINCHED WIRES, BE SURE THAT ALL WIRES AND SLEEVES ARE PRESSED COMPLETELY DOWN IN WIRE GUIDES AND TRAPS.

PRIOR TO INSTALLING THE HANDLE COVER ONTO THE HANDLE SUPPORT, BE SURE THAT THERE ARE NO INTERFERENCES.