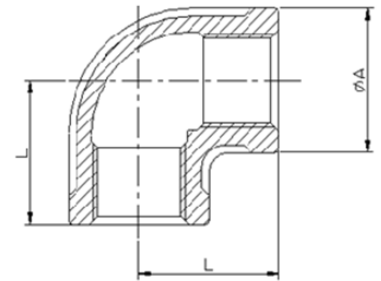


# DIMENSIONAL SPECIFICATIONS

STAINLESS STEEL ISO PATTERN FITTINGS 150 LB.

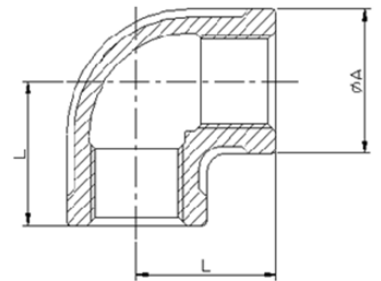
## 90 DEGREE ELBOW (304)

Part #	Size (IN.)	Approx. Net WT. (LB.)	A	L
K401-02	1/8	0.09	0.67	0.75
K401-04	1/4	0.13	0.84	0.83
K401-06	3/8	0.15	0.93	0.98
K401-08	1/2	0.22	1.14	1.10
K401-12	3/4	0.35	1.42	1.30
K401-16	1	0.55	1.69	1.50
K401-20	1-1/4	0.85	2.05	1.77
K401-24	1-1/2	1.10	2.30	1.97
K401-32	2	1.68	2.81	2.28
K401-40	2-1/2	2.93	3.43	2.72
K401-48	3	3.21	3.92	3.07
K401-64	4	6.28	4.96	3.78



## 90 DEGREE ELBOW (316)

Part #	Size (IN.)	Approx. Net WT. (LB.)	A	L
K601-02	1/8	0.09	0.67	0.75
K601-04	1/4	0.13	0.84	0.83
K601-06	3/8	0.15	0.93	0.98
K601-08	1/2	0.22	1.14	1.10
K601-12	3/4	0.35	1.42	1.30
K601-16	1	0.55	1.69	1.50
K601-20	1-1/4	0.85	2.05	1.77
K601-24	1-1/2	1.10	2.30	1.97
K601-32	2	1.68	2.81	2.28
K601-40	2-1/2	2.93	3.43	2.72
K601-48	3	3.21	3.92	3.07
K601-64	4	6.28	4.96	3.78



**MERIT  
BRASS**

DIRECTING THE FLOW OF *Quality*