



INSTALLATION MANUAL

WATER COOLER SOLENOID REPLACEMENT KIT 1000004572

IMPORTANT

THIS IS AN INDOOR APPLICATION ONLY. ALL SERVICE TO BE
PERFORMED BY AN AUTHORIZED SERVICE PERSON.

TOOLS REQUIRED BUT NOT PROVIDED

GLOVES
SAFETY GLASSES
PHILLIPS SCREW DRIVER
FLAT HEAD SCREW DRIVER
5/16" NUT DRIVER
1/4" NUT DRIVER
ALLEN WRENCHES
DRILL
3/16" DRILL BIT
T-20 & T-25 BITS



Patent zurn-elkay.com/patents

⚠ **WARNING:** Cancer and Reproductive Harm - www.P65Warnings.ca.gov

⚠ **ADVERTENCIA:** Cáncer y daño reproductivo - www.P65Warnings.ca.gov

⚠ **AVERTISSEMENT:** Cancer et effets néfastes sur la reproduction - www.P65Warnings.ca.gov

1. Remove the wrapper on the cooler by removing the (4) screws using a 5/16 nut driver or flat head screw driver. (See Fig. 1). If your water cooler has a drop down wrapper, remove the (2) screws in the front of the wrapper using a T-25 bit or 5/32" Allen Wrench (See Fig. 2)
2. Turn off the water.
3. Activate the water cooler to relieve the water pressure.
4. Unplug the water cooler.
5. Determine if your cooler contains a solenoid that is separate from the regulator assembly or a combined solenoid and regulator, then follow the relevant instructions below.

INSTALLATION PROCEDURE FOR COOLERS WITH SEPARATE SOLENOID AND REGULATOR

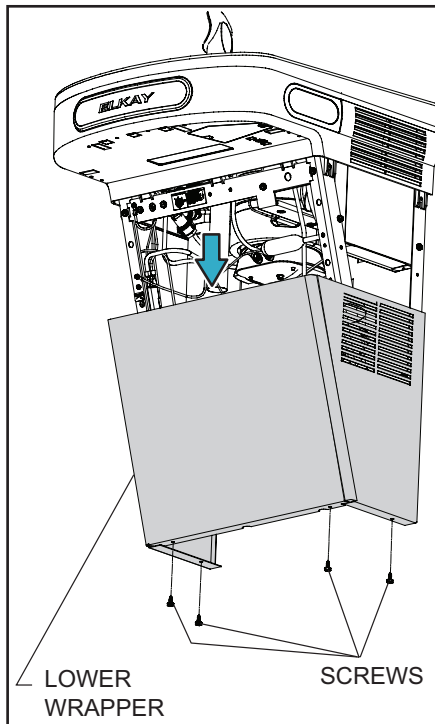


Fig. 1

1. Remove the two screws holding the old solenoid and drop it down below the front bracket (discard the screws).
2. Remove the INLET water line from the old solenoid and firmly insert it into the INLET side of the new solenoid. (See Fig. 3).
3. Remove the OUTLET water line from the old solenoid and firmly insert it into the OUTLET side of the new solenoid.
4. Remove the wires from both terminals on the old solenoid and insert onto the terminals of the new solenoid.
5. Align the new solenoid with the holes in the front bracket and tighten in place using the new screws in the kit.
NOTE the orientation of the solenoid and the INLET water line should face the left side of the cooler.
6. Spin the fan blade by hand to make sure that nothing is keeping the blade from spinning freely.
7. Turn the water back on and plug in the water cooler.
8. Press the push bar and run water through the bubbler.
9. Check for leaks and repair as needed.
10. Replace the lower wrapper.

INSTALLATION PROCEDURE FOR COOLERS WITH COMBINED SOLENOID AND REGULATOR

1. If the unit has a bottle filler, activate the bottle filler to relieve the water pressure. Then unplug and remove the bottle filler.
2. Undo the P-trap.
3. Remove the access panel on the bottom of the shroud with a phillips screwdriver. (See Fig. 4).

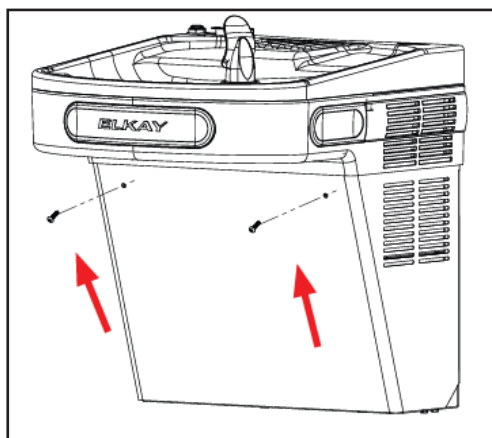


Fig. 2

OPERATION OF QUICK CONNECT FITTINGS

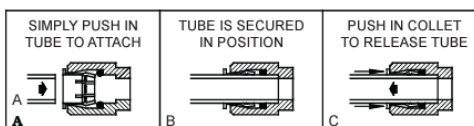


Fig. 3



Fig. 4

4. Reach into the access door and remove the water line from the bottom of the bubbler. (See Fig. 3).
5. Remove the (4) T-20 screws, (2) per side, securing the basin shroud assembly to the cooler frame. (See Fig. 5).



Fig. 5

6. Lift the assembly forward, disconnect the 2 push bar switch wires, one from the cold control and one from the solenoid and set the basin shroud assembly aside. (See Fig. 6).



Fig. 6

7. Remove the two screws holding the old solenoid along with the solenoid ground using a 1/4" nut driver wire and drop it down below the front bracket (discard the screws). (See Fig. 7).

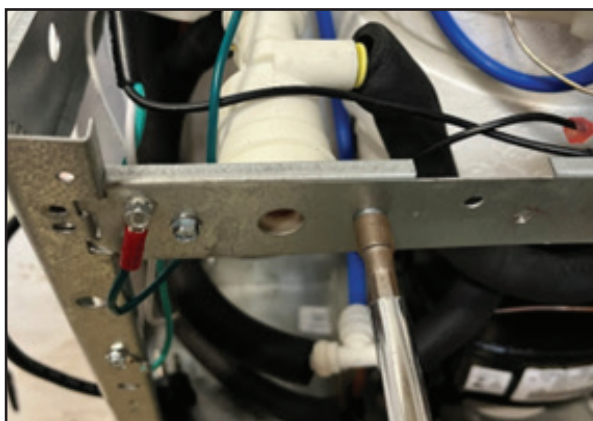


Fig. 7

8. Remove the INLET water line from the back of the old solenoid and firmly insert it into the INLET side of the new solenoid. (See Fig. 8).

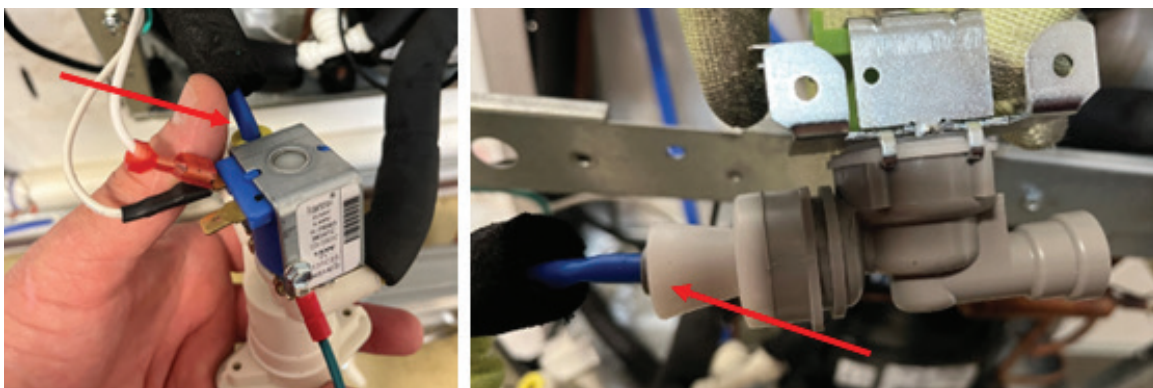


Fig. 8

9. Remove the outlet water line from the old solenoid. DO NOT connect to the new solenoid at this point.
10. Remove the remaining wires from the terminal on the old solenoid and insert onto either one of the terminals of the new solenoid. (See Fig. 9).



Fig. 9

11. With the basin shroud assembly upside down on a table take the water line removed from the bubbler and firmly insert into the INLET side of the regulator holder included in the kit. (See Fig. 10).



Fig. 10

12. Take the 12" piece of poly tubing included in the kit and firmly insert it into the Bubbler. Cover with included Armaflex and then push the tubing inside of the shroud and firmly insert the other end into the OUTLET side of the regulator holder. (See Fig. 11).

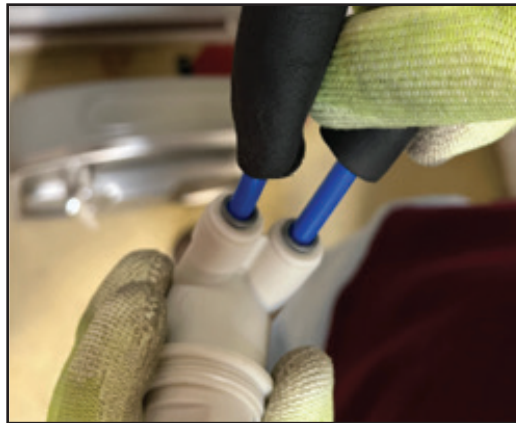


Fig. 11

13. Slide the regulator holder up into the shroud assembly making sure that the regulator adjustment screw is facing the bottom of the shroud.
14. Snap the regulator holder into the shroud aligning the pin in the shroud with the notch in the regulator holder. (See Fig. 12).

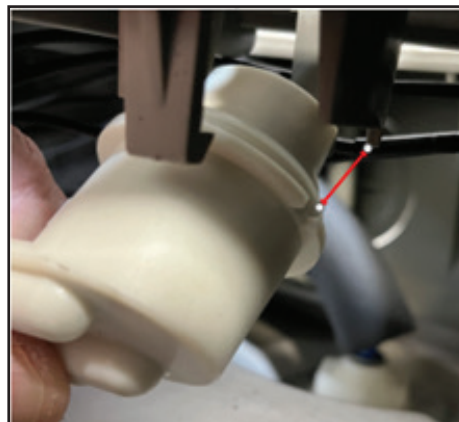


Fig. 12

15. Using the template on the last page of the manual, align the left hole on the template with the right hole in the bracket where the old solenoid was mounted. Drill a 3/16" hole through the cooler bracket where the right-hand hole of the template lines up on the bracket. (See Fig. 13).

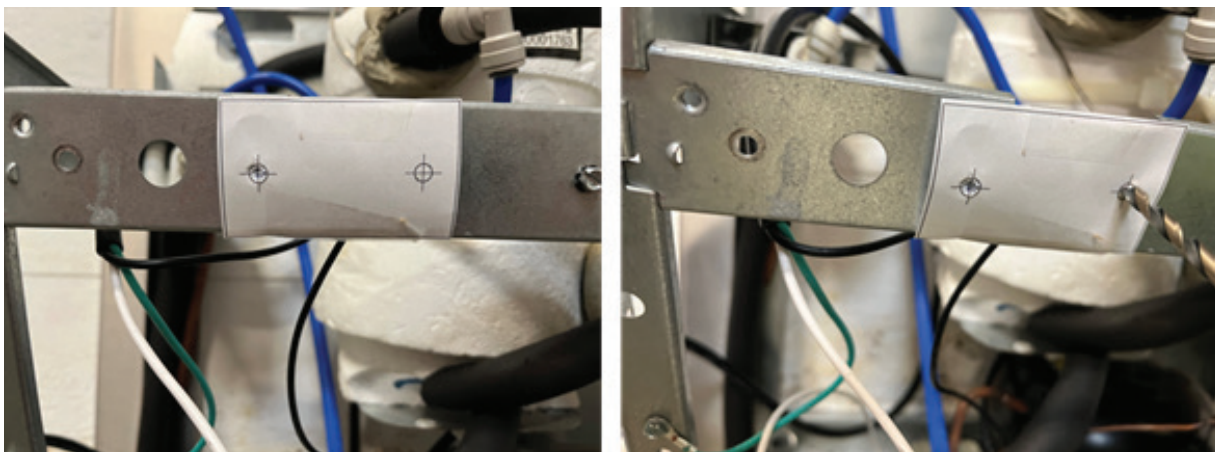


Fig. 13

16. Align the new solenoid with the holes in the front bracket and tighten in place using the new screws in the kit.
NOTE the orientation of the solenoid and the INLET water line should face the left side of the cooler. (See Fig. 14).



Fig. 14

17. Place the basin shroud assembly back on to the cooler frame, plug in the switch wires. One on the open terminal on the solenoid and the other on the piggyback terminal on the Cold Control.
18. Pull the water line down into the cooler making sure that it is out of the way of the fan blade.
19. Tilt the basin shroud assembly in place and tighten with the 4 screws removed earlier, two per side. Ensure that there are not any wires caught between the shroud and the frame.
20. Firmly Insert the water line removed from OUTLET of the old solenoid into the outlet side of the solenoid. (See Fig. 15).



Fig. 15

21. Spin the fan blade by hand to make sure that nothing is keeping the blade from spinning freely.
22. Turn the water back on and plug in the water cooler.
23. Press the push bar and run water through the bubbler.
24. Check for leaks and repair as needed.
25. Adjust the regulator so that the flow out of the bubbler is approximately 4" above the bubbler and not overshooting the side of the basin. (See Fig. 16).



Fig. 16

26. Replace the access panel door.
27. Replace the lower wrapper.

