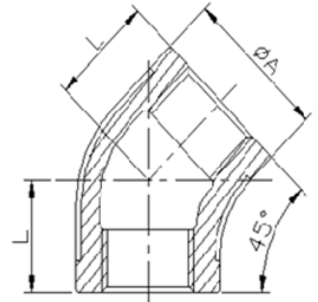


DIMENSIONAL SPECIFICATIONS

STAINLESS STEEL ISO PATTERN FITTINGS 150 LB.

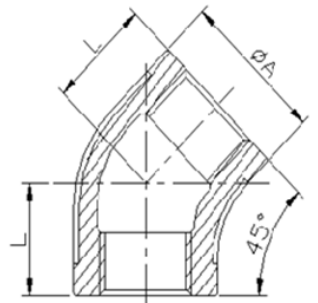
45 DEGREE ELBOW (304)

Part #	Size (IN.)	Approx. Net WT. (LB.)	A	L
K402-02	1/8	0.08	0.71	0.71
K402-04	1/4	0.10	0.83	0.67
K402-06	3/8	0.18	0.98	0.79
K402-08	1/2	0.21	1.16	0.87
K402-12	3/4	0.32	1.40	0.98
K402-16	1	0.49	1.69	1.10
K402-20	1-1/4	0.75	2.06	1.30
K402-24	1-1/2	0.91	2.28	1.42
K402-32	2	1.48	2.83	1.69
K402-40	2-1/2	2.45	3.43	1.93
K402-48	3	2.54	3.94	2.17
K402-64	4	4.39	4.94	2.52



45 DEGREE ELBOW (316)

Part #	Size (IN.)	Approx. Net WT. (LB.)	A	L
K602-02	1/8	0.08	0.71	0.71
K602-04	1/4	0.10	0.83	0.67
K602-06	3/8	0.18	0.98	0.79
K602-08	1/2	0.21	1.16	0.87
K602-12	3/4	0.32	1.40	0.98
K602-16	1	0.49	1.69	1.10
K602-20	1-1/4	0.75	2.06	1.30
K602-24	1-1/2	0.91	2.28	1.42
K602-32	2	1.48	2.83	1.69
K602-40	2-1/2	2.45	3.43	1.93
K602-48	3	2.54	3.94	2.17
K602-64	4	4.39	4.94	2.52



**MERIT
BRASS**

DIRECTING THE FLOW OF *Quality*