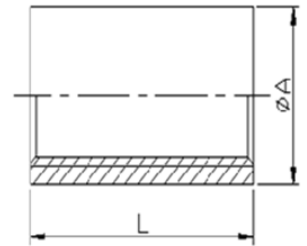


DIMENSIONAL SPECIFICATIONS

STAINLESS STEEL ISO PATTERN FITTINGS 150 LB.

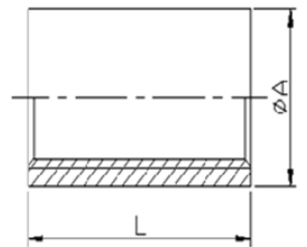
INDUSTRY STANDARD FULL COUPLING (304)

Part #	Size (IN.)	Approx. Net WT. (LB.)	A	L
KP411-02	1/8	0.04	0.57	1.01
KP411-04	1/4	0.06	0.71	1.10
KP411-06	3/8	0.06	0.85	1.19
KP411-08	1/2	0.12	1.01	1.38
KP411-12	3/4	0.16	1.19	1.59
KP411-16	1	0.25	1.48	1.72
KP411-20	1-1/4	0.39	1.84	1.97
KP411-24	1-1/2	0.58	2.09	2.23
KP411-32	2	0.90	2.58	2.56
KP411-40	2-1/2	1.34	3.11	2.91
KP411-48	3	1.97	3.76	3.23
KP411-64	4	2.94	4.77	3.72



INDUSTRY STANDARD FULL COUPLING (316)

Part #	Size (IN.)	Approx. Net WT. (LB.)	A	L
KP611-02	1/8	0.04	0.57	1.01
KP611-04	1/4	0.06	0.71	1.10
KP611-06	3/8	0.08	0.85	1.19
KP611-08	1/2	0.12	1.01	1.38
KP611-12	3/4	0.18	1.19	1.59
KP611-16	1	0.25	1.48	1.72
KP611-20	1-1/4	0.39	1.84	1.97
KP611-24	1-1/2	0.54	2.09	2.23
KP611-32	2	0.84	2.58	2.56
KP611-40	2-1/2	1.34	3.11	2.91
KP611-48	3	1.97	3.76	3.23
KP611-64	4	2.94	4.77	3.72



**MERIT
BRASS**

DIRECTING THE FLOW OF *Quality*