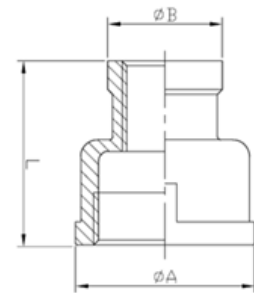


DIMENSIONAL SPECIFICATIONS

STAINLESS STEEL ISO PATTERN FITTINGS 150 LB.

REDUCING COUPLING CONTINUED (304)

Part #	Size (IN.)	Approx. Net WT. (LB.)	A	B	L
K412-2412	1-1/2 X 3/4	0.62	2.32	1.40	2.05
K412-2416	1-1/2 X 1	0.64	2.32	1.71	2.09
K412-2420	1-1/2 X 1-1/4	0.66	2.32	1.97	2.09
K412-3208	2 X 1/2	0.85	2.83	1.14	1.99
K412-3212	2 X 3/4	0.84	2.83	1.38	2.01
K412-3216	2 X 1	1.00	2.83	1.69	2.20
K412-3220	2 X 1-1/4	0.95	2.83	2.05	2.20
K412-3224	2 X 1-1/2	1.00	2.83	2.23	2.24
K412-4016	2-1/2 X 1	1.61	3.43	1.69	2.36
K412-4020	2-1/2 X 1-1/4	1.30	3.35	2.05	2.36
K412-4024	2-1/2 X 1-1/2	1.54	3.35	2.24	2.36
K412-4032	2-1/2 X 2	1.34	3.35	2.73	2.40
K412-4816	3 X 1	1.94	3.94	1.70	2.44
K412-4820	3 X 1-1/4	1.50	3.94	2.07	2.44
K412-4824	3 X 1-1/2	1.59	3.94	2.23	2.44
K412-4832	3 X 2	1.54	3.94	2.76	2.44
K412-4840	3 X 2-1/2	1.71	3.94	3.43	2.44
K412-6432	4 X 2	2.89	5.00	2.76	2.56
K412-6440	4 X 2-1/2	2.85	5.04	3.39	2.56
K412-6448	4 X 3	2.07	5.04	4.13	2.56



**MERIT
BRASS**

DIRECTING THE FLOW OF *Quality*