



Submittal Data Information

0018e[®] ECM High-Efficiency Circulator

101-207

Effective: February 1, 2023

Supersedes: March 5, 2021

Job: _____ Engineer: _____ Contractor: _____ Rep: _____

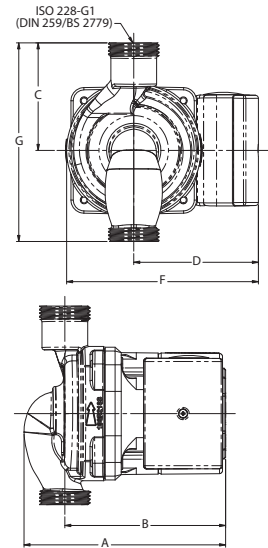
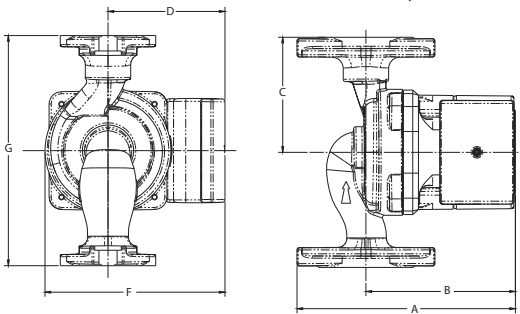
ITEM NO.	MODEL NO.	

Specifications

- Max. Shut-off Head: 18 feet
- Max. Flow: 16 gpm
- Max. Operating Pressure:
 - Cast Iron: 125 psi (8.6 bar)
 - Stainless Steel: 150 psi (10 bar)
- Max. Water Temp: 230°F (110°C)
- Min. Water Temp: 36°F (2°C)
- Electrical specifications:
 - Voltage: 120V, 60 Hz
 - Single phase
 - Max. Operating Power: 44W
 - Max. AMP Rating: 0.54
- Cast iron casing suitable for closed loop systems only
- Stainless steel casing suitable for potable water or open systems
- Not suitable for chilled water
- Taco circulator pumps are for indoor use only
- Acceptable for use with water or maximum of 50% water/glycol solution

Applications

The 0018e is a variable speed, high-efficiency wet rotor circulator with an ECM permanent magnet motor. Operating modes include infinitely variable fixed speed, constant pressure, proportional pressure or self-adjusting activeADAPT[®]. Stainless Steel models for use in potable water systems for domestic water recirculation. The 0018e is not suitable for chilled water systems.



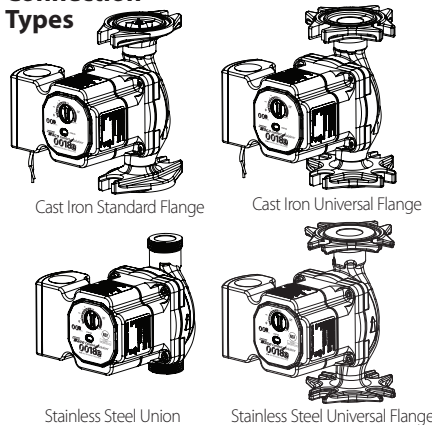
Pump Dimensions & Weights

Model Number	Connection Type	Casing	A		B		C		D		F		G		Ship Wt.	
			in.	mm	in.	mm	in.	mm	in.	mm	in.	mm	in.	mm	lbs.	Kg
0018e-2F2	Standard	CI	6	152	4-1/8	104	3-3/16	80	3-1/4	82	5	126	6-3/8	161	5.8	2.6
0018e-2F4	Universal	CI	6	152	4-1/8	104	3-3/16	80	3-1/4	82	5	126	6-3/8	161	6	3.7
0018e-SF4	Universal	SS	6	152	4-1/8	104	3-3/16	80	3-1/4	82	5	126	6-3/8	161	5.5	2.5
0018e-SU	Union	SS	5-1/6	131	4-1/8	104	3-3/16	80	3-1/4	82	5	126	5-1/8	130	4.6	2.1

Materials of Construction:

Casing:Cast Iron or
Stainless Steel
 Stator Housing:Composite
 Cartridge:Composite
 Impeller:Composite
 Shaft:Ceramic
 Bearings:Carbon
 Thrust Bearing:Ceramic
 O-Ring & Gaskets:EPDM

Connection Types



HYDRAULIC ENERGY INSTITUTE RATING

Model #: 0018e WAIP: 0.071

CIRCULATOR PUMP CEI: 0.39 (ER 188)

ENERGY RATING

152 188

Most Consumptive RANGE Least Consumptive

Note: The ER value is dependent on the selected control. Multiple options may be available on this pump, as follows:

- Full Speed
- Manual Speed Control
- Pressure (Rated)

Power savings (watts) over a baseline case can be estimated by multiplying the ER by WAIP and multiplying by 7.46. Multiplying power savings by operating hours and cost of energy will yield estimated cost savings.

4V2DBK er.pumps.org Apr 2021



Stainless Steel models only

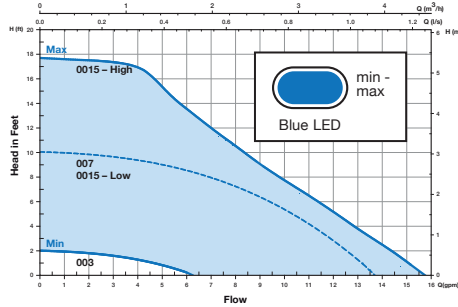
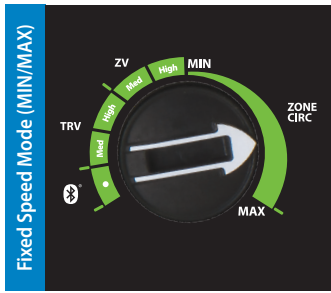
Electrical Data

Model	Volts	Hz	Ph	Max. Amps	Max. Watts	RPM
All Models	120	60	1	.54	44	1590-4830
Motor Type	ECM, Permanent Magnet, Thermally Protected					

Models & Performance

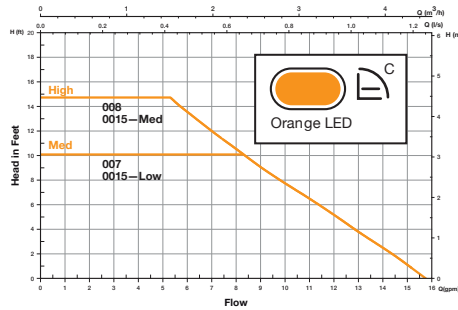
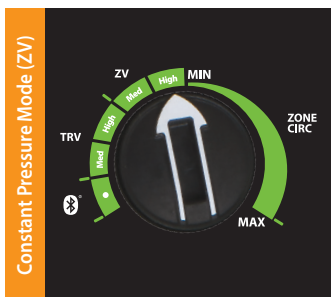
Versatility & dependability

The 0018e is factory-programmed for **MAX Speed Setting**. Simply turn the dial to change speed, operating mode or activate Mobile App.



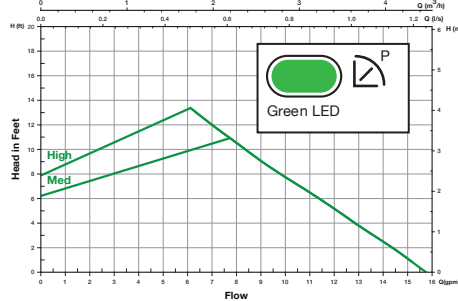
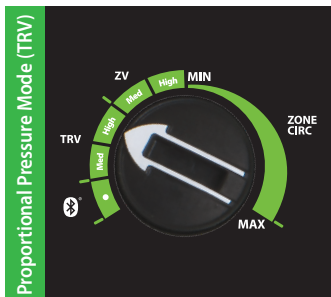
Fixed speed mode (Zone Circ) allows the installer to fine tune the circulator flow rate to precisely match design load conditions. It is infinitely variable between MIN/MAX settings.

Ideal for zoning with circulators and for domestic hot water recirculation.



In constant pressure mode (ZV), the circulator maintains a constant pressure differential ($\Delta p-c$) in the system as heating load increases or decreases. Selections options are Medium or High.

Best option for zoning with zone valves.



In proportional pressure mode (TRV), the circulator maintains a proportional pressure differential ($\Delta p-v$) in the system as heating load increases or decreases. Flow will change in relationship to the change in pressure differential. Selections options are Medium or High.

Best option for panel radiators with thermostatic radiator valves (TRV) and for standard piping with crossover valves.

Taco Comfort Solutions® A Taco Family Company

Taco, Inc., 1160 Cranston Street, Cranston, RI 02920 | Tel: (401) 942-8000

Taco (Canada), Ltd., 8450 Lawson Road, Suite #3, Milton, Ontario L9T 0J8 | Tel: (905) 564-9422

Visit our web site: www.TacoComfort.com | Printed in USA | ©2023 Taco, Inc.

