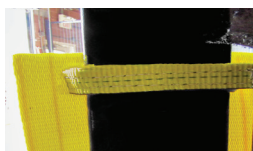


FORK SLEEVES

Lift-All fork sleeves protect your loads from damage caused by the sharp edges of forklift forks. These long-lasting, easy to install sleeves are made from heavy-duty *Webmaster*® 1600 polyester webbing.

Features and Benefits

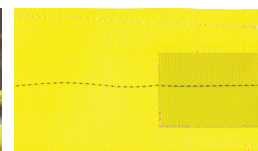
- Soft *Webmaster* 1600 polyester sling webbing cushions the load to avoid damage.
- 12" long rear flap protects the load from vertical member of the fork to avoid damage.
- Retaining straps keep sleeve on forks, saving time.
- Quick and easy to install.
- Sewn-in reinforced tip is available to prolong life of the sleeve, saving you money.



Back View



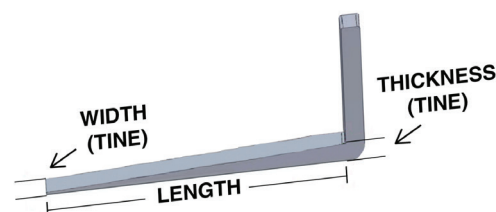
Side View



Sewn-in Reinforced Tip

Part Number*		Fork Width	Fork Length	Fork Thickness
Standard Sleeve	Reinforced Tip Sleeve			
FKSL4A	FKSLT4A	3" and 4"	48"	1.5"
FKSL5B	FKSLT5B	5"	54"	1.5" up to 2"
FKSL6D	FKSLT6D	6"	84"	1.5" up to 4"
FKSL8B	FKSLT8B	8"	84"	1.5" up to 2"

*Part Numbers are one each - Not a pair.



BUCKET & COOLER SLINGS

Improve productivity and help protect your workers from injury with these slings.



Lift-All Cooler Slings will adjust to lift 3, 5, or 10-gallon water coolers safely and securely to elevated workstations. Connect two or three together to save crane time.

- Made from 2" wide yellow polyester sling webbing. **Rated Capacity: 500 lbs.**
- Three lifting legs hold both cooler and lid securely.
- Buckles on the two belly bands allow for easy rigging, a snug fit and quick connection.
- Extra loop on the bottom of the sling allows for easy attachment of additional hook top cooler slings.
- Overall sling height is 44".
- Custom sizes available.

Hook Top Part Number: CSH10 weight: 4.3 lbs.
Eye Top Part Number: CSE10 weight: 3.3 lbs.



Lift-All Bucket Slings are designed to lift 5-gallon buckets filled with up to 200 pounds of material.

- Made from 1" wide yellow polyester sling webbing.
- **Rated capacity: 200 lbs.**
- Designed for buckets with an 11" diameter base.
- Two belly bands keep bucket secure.
- Overall sling height is 28".
- Custom sizes available.

Part Number: BS5 weight: 0.8 lbs.