

Job Name:

Schedule Reference:

Site:



PLFY-P12NFMU-E

GENERAL FEATURES

- Square edge, sleek design
- Dual set point functionality (*1)
- 3D i-see Sensor™ available as Standard (*2)
- Improved installation features
- Occupancy detection with 3D i-see Sensor™ (*2)
- Energy saving features with 3D i-see Sensor™ (*2)
- Improved occupant comfort
- Four fan speed settings including auto-fan
- Individual vane settings
- 2' x 2' size matches size of many ceiling tiles
- Corner-pocket design for simplified installation
- Built-in condensate lift mechanism to provide up to 19-11/16 in of lift
- Ventilation air intake supported

Note: Mitsubishi Electric (MESCA) supports the use of only MESCA supplied and approved accessories for proper functioning of the unit(s). Use of non-MESCA supported accessories will affect warranty coverage.

ACCESSORIES:

- Grille with 3D i-see Sensor™ .. (Required ordered separately) .. SLP-18FAEU
- External Heating Adapter PAC-YU25HT
- Simple Remote Controller PAC-YT53CRAU
- Smart ME Controller PAR-U01MEDU
- Wireless Remote Controller PAR-FL32MA
- Wired MA Remote Controller (*2) PAR-33MAA
- Wireless Signal Receiver PAR-SF9FA-E

Notes:

- *1 All components of the system must be compatible. For more details on system compatibility, please refer to Technical Bulletin 100-151 available on our website.
- *2 Unit comes standard with built-in 3D i-see sensor. 3D i-see sensor functions only available with PAR-33MAA wired remote controller or newer models released.
- Ventilation air to be introduced independent of or in series with VRF indoor units. Please refer to local codes for the required ventilation rates specific to the application.

Notes:

SPECIFICATIONS:

Capacity*		Power Input (kW)	Current input (A)
Cooling	Btu/h	12,000	0.02
Heating	Btu/h	13,500	0.18

* Cooling / Heating capacity at the maximum value at operation under the following nominal conditions:

Cooling | Indoor : 80° F (26.7° C) DB / 67° F (19.4° C)
 WB Cooling | Outdoor : 95° F (35° C) DB
 Heating | Indoor : 70° F (21.1° C) DB
 Heating | Outdoor : 47° F (8.3° C) DB / 43° F (6.1° C) WB

Electrical *

* All electrical work shall comply with National (CEC) and local codes and regulations.

Electrical Power Requirements	1-phase, 208 / 230V, 60Hz		
Minimum Circuit Ampacity (MCA)	A	0.29 / 0.29	
Maximum Fuse Size	A	15	

External Dimensions		Unit	Grille
Height	In.(mm)	8-3/16 (208)	13/32 (10)
Width	In.(mm)	22-7/16 (570)	24-19/32 (625)
Depth	In.(mm)	22-7/16 (570)	24-19/32 (625)
Net Weight	Lbs.(kg)	31.3 (14.2)	5.3 (2.4)

External Finish Unit (Grille)	Galvanized steel sheet (MUNSELL (1.0Y 9.2/02))
Coil Type	Cross Fin (Aluminum fin and copper tube)

Fan		
Type x Quantity (Drive)	Tubro fan x 1 (Direct-driven)	
Airflow rate (Low - Mid - High)	CFM	245 - 280 - 335
External Static Pressure	In. WG (Pa)	0.00 (0)
Motor Type (Output kW)	DC motor (0.05)	

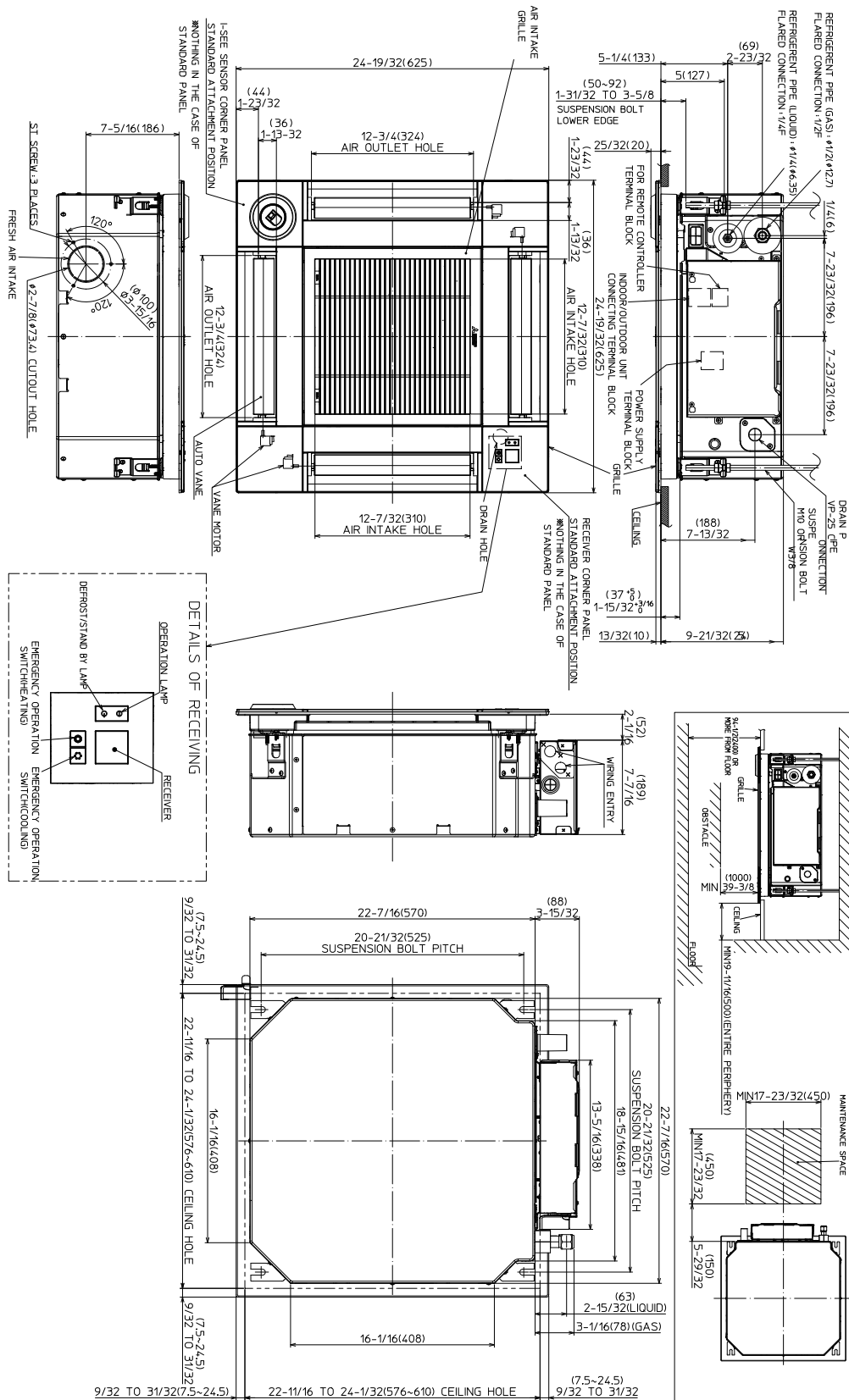
Air Filter	PP honeycomb fabric (Long life filter, anti-bacterial type)
------------	---

Refrigerant Piping Diameter (R410A Refrigerant)		
Liquid (High Pressure)	In.(mm)	1/4 (6.35) Flared
Gas (Low Pressure)	In.(mm)	1/2 (12.7) Flared
Field Drain Pipe Size (O.D.)	In.(mm)	1-1/4 (32) (PVC pipe VP-25 connectable)

Sound Data (Low - Mid - High) (measured in anechoic room)		
Sound Pressure Level	dB(A)	26 - 30 - 34

Model: PLFY-P12NFMU-E – DIMENSIONS

Unit: in (mm)



Should this document be altered or changed without MESCA's permission, it becomes null and void. MESCA assumes no responsibility for any consequences in such cases.



Form # SB_PLFY-P12NFMU-E_201905
 Specifications are subject to change without notice.
 www.MitsubishiElectric.ca
 © 2018 Mitsubishi Electric Sales Canada Inc.

