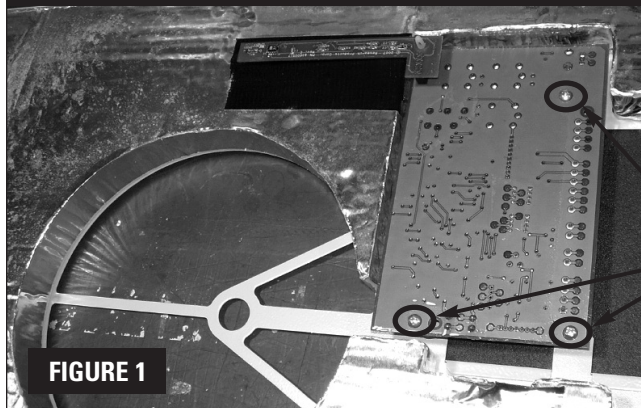


## Part No. 5353 Installation Instructions

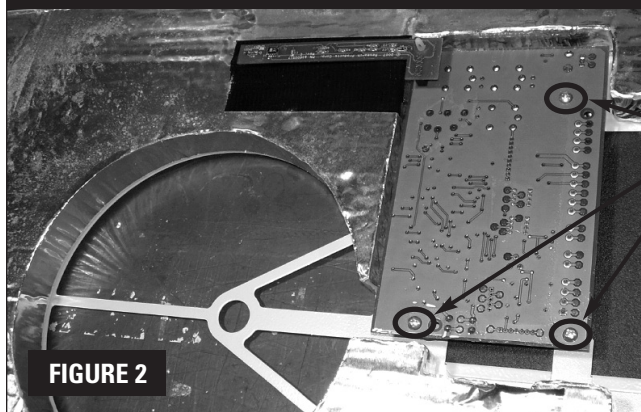
### STEP 1



The following instructions are for replacing a control board in the dehumidifier with the two piece control and sensor board (service part 5353).

- A. Turn the dehumidifier off using the on/off switch.
- B. Remove the (3) mounting screws from the control board. (See **Figure 1**)
- C. Disconnect the ribbon cable from the control board.
- D. Disconnect the (2) frost sensor terminals from the control board.

### STEP 2



Attach new control and sensor boards.

- A. Place the new control and sensor board into the opening and insert the (3) mounting screws. (See **Figure 2**)
- B. Reconnect the ribbon cable and (2) frost sensor terminals back into the board.
- C. Set the dip switches and cycle time (if applicable) to match what was set on the removed control board.
- D. Turn the dehumidifier on using the on/off switch.