

NPN Series

KD navien®

NPN-Universal & NPN-Exterior Premium Tankless Water Heaters

Navien
innovation
now in
non-condensing
tankless



NaviLink™ Wi-Fi remote control system.
Available as an accessory for all NPN models.

N O N - C O N D E N S I N G T A N K L E S S R E I N V E N T E D

NPN NAVIEN PREMIUM NON-CONDENSING TANKLESS WATER HEATERS

No one has put more non-condensing ingenuity into tankless than Navien

The new Navien NPN series is the first and only non-condensing tankless water heater series that offers a durable stainless-steel heat exchanger and a patented stainless steel burner design, all with Navien's dedication to advanced engineering, elegant design and exceptional product quality and support.

- Patented NaviTech™ stainless steel heat exchanger and stainless steel burner with precision control flame technology for eco-friendly low NO_x emissions comparable to condensing burners
- 0.81 Uniform Energy Factor (UEF) for all models
- Choice of universal indoor/outdoor or outdoor only operation
- Strong residential and commercial warranties
- NaviVent™ concentric 3" x 5" venting
- Units available in either Natural Gas (NG) or Liquid Propane (LP) gas

NAVITECH™
STAINLESS STEEL
HX AND BURNER

PREMIUM
INTEGRATED
CONTROL

0.81 UEF

98°-140°
TEMP RANGE

9.5 GPM
@ 35° TEMP RISE

RESIDENTIAL &
COMMERCIAL

CASCADE
CAPABLE



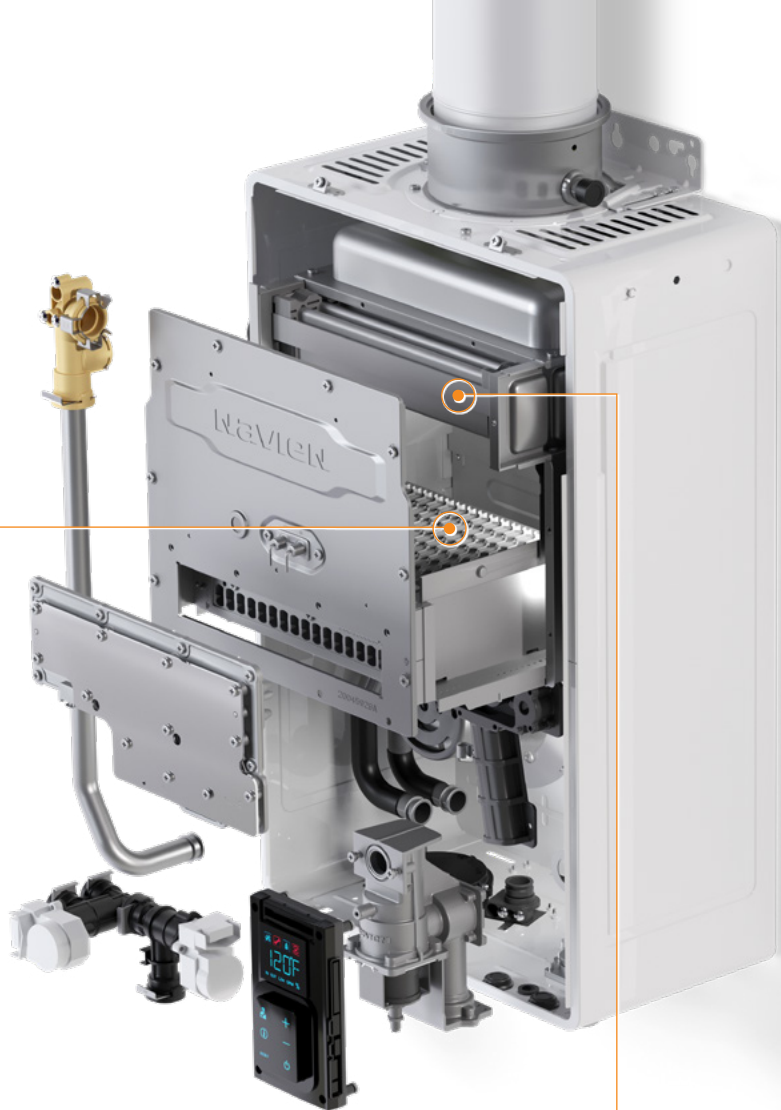
NPN-Universal
Indoor/outdoor

NaviTech™ PATENTED NON-CONDENSING STAINLESS STEEL TECHNOLOGY

Navien NPN stainless steel heat exchangers and burners give you unmatched performance and durability



NPN-Exterior
Outdoor only



**Patented
NaviTech™
stainless steel burner**
with precision control
flame technology for eco-friendly
low NO_x emissions comparable
to condensing burners.



**Exclusive
NaviTech™
stainless steel heat
exchanger.** NPN is the
first non-condensing unit with a stainless steel heat
exchanger. The corrosion resistant heat exchanger is
another innovation created from Navien's industry leading
NPE condensing tankless stainless steel technology.

KD navien®

COMPARE OUR ADVANTAGES TO OTHER NON-CONDENSING TANKLESS

Flexible Navien NPN-U universal indoor or outdoor unit and **NPN-E** exterior dedicated outdoor unit. NPN-E outdoor models also feature remote control and built-in button controls for easy service.



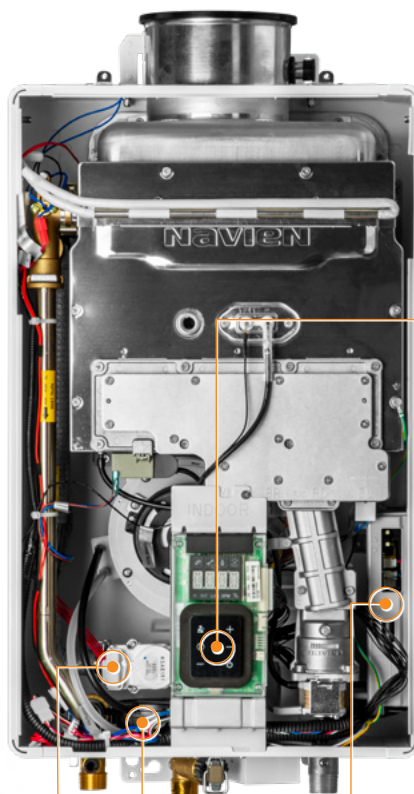
NPN-Universal
indoor
configuration.



NPN-Universal
with vent cap
for outdoor use.



NPN-Exterior
outdoor
use only.



• **NPN series integrated control panel** allows you to adjust water temperature, operation status and troubleshooting.



NPN-U

NPN-E

• **Circuitry with built-in recirculation control and software.**
No need to add separate controller saving installation time and money.



• **Built-in Air Pressure Sensor (APS)** monitors and maintains air/gas pressure ratio during operation. Also ensures consistent DHW output during partial air blockage.



• **Built-in Water Adjustment Valve (WAV) and Mixing Valve** controls flow to maintain setpoint and stabilizes temperature during flow changes.





NaviLink™ Wi-Fi remote control.

This optional accessory enables you to control temperatures remotely, access usage data and receive diagnostic notifications from your smart phone or tablet.



Space saving and lighter weight design.

These sleek wall-hung units use much less space and are substantially lighter than traditional tank water heaters.



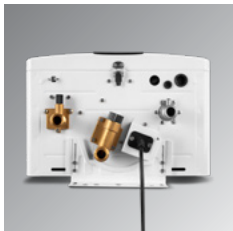
Low noise levels.

Installations in or near media rooms, recreation rooms or any living areas of the house are possible with the quiet running NPN water heaters.



Cascading capability.

For increased domestic hot water flow demand, the NPN can be cascaded with another NPN unit.



Pin-to-pin design.

Matches configuration of other tankless models for easy retrofit installation.



Low NO_x.

The NPN series non-condensing eco-friendly stainless steel burner emits very low NO_x levels, like our industry leading NPE series condensing tankless water heaters.



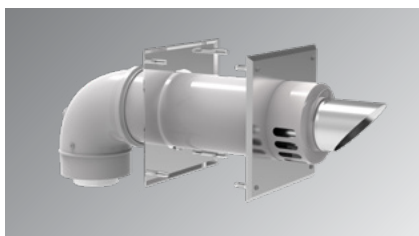
90%+ OF NPN IS DESIGNED AND BUILT BY NAVIEN

Navien is the only non-condensing tankless water heater manufacturer to design and produce stainless steel heat exchangers and high efficiency NaviTech™ burners. Instead of assembling parts from various suppliers, we engineer and produce 90% of the components in our NPN series units and use advanced robotics to assure manufacturing integrity.

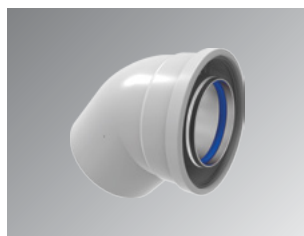


KD Navien®

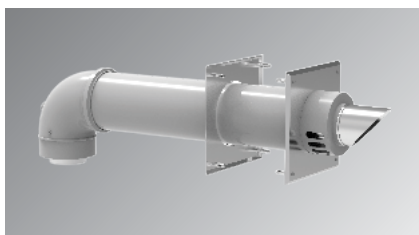
3" x 5" CONCENTRIC VENTING ACCESSORIES



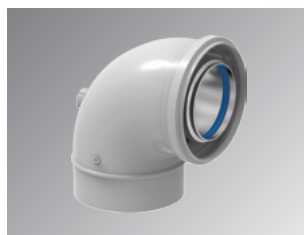
Sidewall termination kit
11.5" (292mm)
GXXX001891



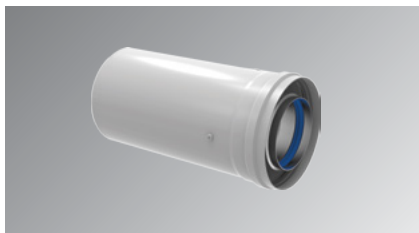
Elbow
80-125 mm 45°
GXXX001894



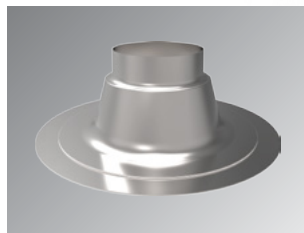
Sidewall termination kit
21" (533mm)
GXXX001892



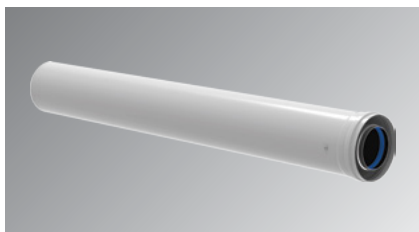
Elbow
80-125 mm 90°
GXXX001895



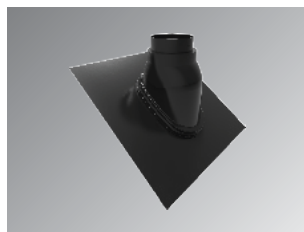
Vent pipe extension
10" (254mm)
GXXX001896



Flat roof flashing
GXXX001900



Vent pipe extension
39" (991mm)
GXXX001897



Adjustable roof flashing
GXXX001901



Concentric roof termination
18" (457mm)
GXXX001893



Metal wall strap
GXXX001902



Condensate trap kit
GXXX001952



NaviVent™ system matched venting makes installations quick and easy

NPN WATER HEATER ACCESSORIES



**NaviLink™
Wi-Fi control**
PBCM-AS-001



**HotButton™
control kit**
PZZZ-00046
Wall plate
GXXX001427
Push button
GXXX001426



**H2Air™ kit
AHU optimizer**
PNBD-000001



**Outdoor
vent cap kit
(NPN-U only)**
30023991A



**Plumb easy
valve 3/4" with relief valve**
30009323A



**Pipe cover
NPN series**
30024017A



**Remote
controller
(optional for
NPN-U models)**
30022717A



**Recess box
(NPN-E only)**
30023550A
(Lock not included)



**PeakFlow™
anti-scale system**
GXXX001725

**PeakFlow™
replacement media**
GXXX001726

**PeakFlow™
replacement media**
GXXX001327



Cascade cable
GXXX000546

**External
pump wire**
GXXX001319



N O N - C O N D E N S I N G T A N K L E S S R E I N V E N T E D

Dimensions

NPN-U series	NPN-E series
<p>Overhead View</p> <p>Front View</p> <p>Supply Connections</p> <p>Connection Size</p> <ul style="list-style-type: none"> A Exhaust Gas Vent 3" B Air Intake 5" C Hot Water Outlet \varnothing 3/4" D Cold Water Inlet \varnothing 3/4" E Gas Inlet \varnothing 3/4" F Condensate Drain \varnothing 5/8" 	<p>Overhead View</p> <p>Front View</p> <p>Supply Connections</p> <p>Connection Size</p> <ul style="list-style-type: none"> A Hot Water Outlet \varnothing 3/4" B Cold Water Inlet \varnothing 3/4" C Gas Inlet \varnothing 3/4"

Ratings & Specifications

Item		NPN-Universal Model			NPN-Exterior Model		
		NPN-160U	NPN-180U	NPN-199U	NPN-160E	NPN-180E	NPN-199E
Heat capacity (input) natural gas/propane gas		10,700– 160,000 (BTU/H)	10,700– 180,000 (BTU/H)	10,700– 199,900 (BTU/H)	10,700– 160,000 (BTU/H)	10,700– 180,000 (BTU/H)	10,700– 199,900 (BTU/H)
Uniform Energy Factor for NG & LP		0.81 UEF					
Flow rate (DHW)	35°F (19°C) temp rise	7.6 GPM (28.8 L/m)	8.5 GPM (32.2 L/m)	9.5 GPM (36.0 L/m)	7.6 GPM (28.8 L/m)	8.5 GPM (32.2 L/m)	9.5 GPM (36.0 L/m)
	45°F (25°C) temp rise	5.8 GPM (22.3 L/m)	6.6 GPM (25.0 L/m)	7.4 GPM (28.0 L/m)	5.8 GPM (22.3 L/m)	6.6 GPM (25.0 L/m)	7.4 GPM (28.0 L/m)
	67°F (37°C) temp rise	4.0 GPM (15.1 L/m)	4.5 GPM (17.0 L/m)	5.0 GPM (18.9 L/m)	4.0 GPM (15.1 L/m)	4.5 GPM (17.0 L/m)	5.0 GPM (18.9 L/m)
Dimensions		14.0" W x 23.0" H x 9.3" D					
Weight		55.0 lbs. (25 kg)	60.0 lbs. (27 kg)	60.0 lbs. (27 kg)	55.0 lbs. (25 kg)	60.0 lbs. (27 kg)	60.0 lbs. (27 kg)
Installation type		Indoor or outdoor wall-hung (vent kit option for outdoor)			Only outdoor wall-hung		
Venting type		Concentric			No venting (outdoor installation only)		
Ignition type		Electronic ignition					
Water pressure		15–150 PSI					
Natural gas supply pressure (from source)		3.5" WC –10.5" WC					
Propane gas supply pressure (from source)		8" WC –13" WC					
Natural gas manifold pressure (min-max)		0.70" WC, 2.83" WC	0.53" WC, 2.25" WC	0.53" WC, 2.81" WC	0.69" WC, 3.23" WC	0.53" WC, 2.38" WC	0.52" WC, 2.99" WC
Propane gas manifold pressure (min-max)		1.38" WC, 5.93" WC	1.31" WC, 5.28" WC	1.31" WC, 6.55" WC	1.35" WC, 6.34" WC	1.28" WC, 5.39" WC	1.28" WC, 6.61" WC
Minimum flow rate		0.5 GPM (1.9L/m)					
Connection sizes	Cold water inlet	3/4" NPT					
	Hot water outlet						
	Gas inlet						
Power supply	Main supply	120V AC, 60 Hz					
	Normal	90 W	88 W	120 W	90 W	88 W	120 W
	Standby	4 W					
	Anti-frost	114 W					
	External pump	< 150 W, 1.5 A					
	Fuse	5.0 A					
Materials	Casing	Cold rolled carbon steel					
	Heat exchanger	Stainless steel					
Safety devices		Flame rod, APS, overheat protection, ignition operation detector, water temperature high limit switch, power surge fuse					

Warranty

Application	Labor	Parts	Heat Exchanger
Residential	Standard	1 year	5 years
	Uncontrolled Recirculation ²	1 year	3 years
Commercial or Combi ¹	Standard	1 year	5 years
	Uncontrolled Recirculation ²	1 year	3 years

¹Combi refers to a combination potable water and space heating application. Water heaters cannot be used in space heating only applications.

²Uncontrolled-Recirculation: External pumps configured to circulate continuously through the water heater are subject to the uncontrolled recirculation warranty terms. An aquastat is the minimum pump control requirement for DHW or storage tank recirculation in order to maintain the full controlled recirculation warranty.

For complete details please refer to the full warranty at NavienInc.com.



Navien Inc.
20 Goodyear, Irvine, CA 92618
800-519-8794, NavienInc.com

KD NAVIEN®

NPN-BR001-1911
©2019 Navien Inc.

NON-CONDENSING TANKLESS REINVENTED