



Shower - Series—various

BIG RAIN Rain panel for flush ceiling installation manual control - matte stainless steel

Article number: 41 401 979-86 0010



- 7-7/8" x 6-1/4" headshower, 99 jets
- 14-1/8" x 11" body shower, 142 jets
- 23-5/8" x 18-7/8" stainless steel cover plate
- 2x 1/2" flex lines
- 4x mounting pins
- Pre-assembled stainless steel casing
- Descaling system

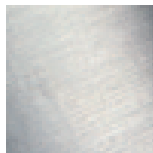
Technical data:

- Max Flow rate for each rain function: 2.5 gpm
- minimum working pressure = 29 Psi
- maximum working pressure = 58 Psi
- Weight: 27 lbs

Technical data:

Plumbing:

- Water softening device recommended
- For choosing the drainage, taking into consideration the output of items in the shower, the specific demand needs to be assessed.
- Supply line (hot/cold): 2 x 3/4"
- Must be installed with diverter (rough included).
- Diverter ensures that the product does not exceed the max. flow rate of 2.5 gpm at any setting. It does not permit the use of two functions simultaneously.
- Diverter trim is sold separately
- Please refer to Planning Guide for proper sizing and installation methods



matte stainless steel

Discontinued items available to order until 31.12.9999

All dimensions in mm / inch = mm x 0,0394

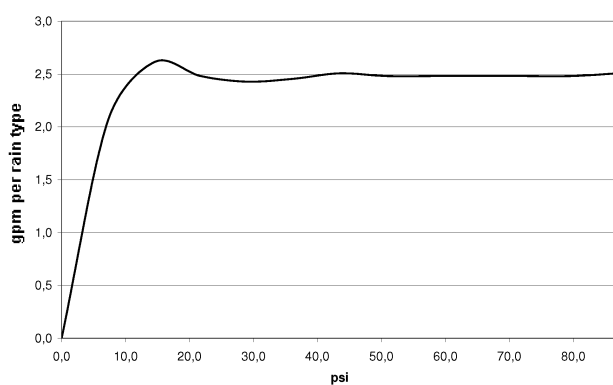


Shower - Series—various

BIG RAIN Rain panel for flush ceiling installation manual control - matte stainless steel

Article number: 41 401 979-86 0010

Flow rate chart





Shower - Series—various

BIG RAIN Rain panel for flush ceiling installation manual control - matte stainless steel

Article number: 41 401 979-86 0010

Other surface finishes

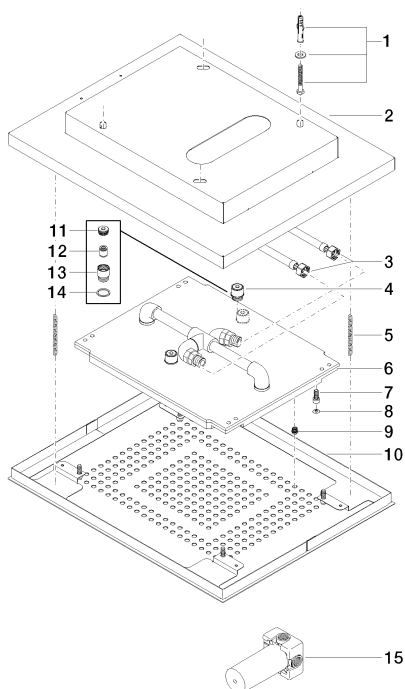


polished stainless steel

41 401 979-85 0010

More custom finish options are available via special production (xTra Service). Please see our finish matrix for availability and pricing or contact a Dornbracht representative.

Spare parts list



| Number | Item Number | Designation | Number of units |
|--------|--------------------|--|-----------------|
| 1 | 04 30 35 010 00 90 | fixing set | 4 |
| 2 | 04 17 09 001 00-86 | casing | 1 |
| 3 | 12 502 970 90 | Flexible supply line 1/2" x 1/2" x 15-3/4" - | 2 |
| 4 | 04 24 03 027 01 90 | nipple | 2 |
| 5 | 04 21 50 004 01 90 | accessories | 2 |
| 6 | 04 12 05 004 10 90 | shower | 1 |
| 7 | 09 30 30 155 90 | screw | 4 |
| 8 | 09 31 20 036 90 | plug | 4 |
| 9 | 04 29 03 036 00 90 | insert | 241 |
| 10 | 04 11 02 113 02-86 | cover | 1 |
| 11 | 09 24 04 112 10 90 | nipple | 1 |
| 12 | 09 23 01 042 90 | insert | 1 |
| 13 | 09 24 03 027 90 | nipple | 1 |
| 14 | 09 14 20 025 90 | seal | 1 |
| 15 | 35 104 970-90 0010 | Wall mounted three-way diverter - | 1 |