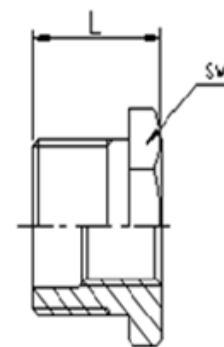
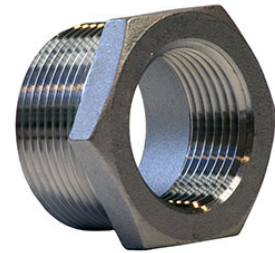


DIMENSIONAL SPECIFICATIONS

STAINLESS STEEL ISO PATTERN FITTINGS 150 LB.

HEX HEAD BUSHING (316)

Part #	Size (IN.)	Approx. Net WT. (LB.)	L	SW
K614-0402	1/4 X 1/8	0.02	0.79	0.63
K614-0602	3/8 X 1/8	0.04	0.79	0.71
K614-0604	3/8 X 1/4	0.03	0.79	0.71
K614-0802	1/2 X 1/8	0.10	0.94	1.02
K614-0804	1/2 X 1/4	0.09	0.94	1.02
K614-0806	1/2 X 3/8	0.07	0.94	1.02
K614-1202	3/4 X 1/8	0.16	1.02	1.18
K614-1204	3/4 X 1/4	0.16	1.02	1.18
K614-1206	3/4 X 3/8	0.14	1.02	1.18
K614-1208	3/4 X 1/2	0.12	1.02	1.18
K614-1602	1 X 1/8	0.20	1.14	1.38
K614-1604	1 X 1/4	0.24	1.14	1.38
K614-1606	1 X 3/8	0.22	1.14	1.38
K614-1608	1 X 1/2	0.21	1.14	1.38
K614-1612	1 X 3/4	0.17	1.14	1.38
K614-2002	1-1/4 X 1/8	0.43	1.22	1.77
K614-2004	1-1/4 X 1/4	0.43	1.22	1.77
K614-2006	1-1/4 X 3/8	0.41	1.22	1.77
K614-2008	1-1/4 X 1/2	0.42	1.22	1.77
K614-2012	1-1/4 X 3/4	0.38	1.22	1.77
K614-2016	1-1/4 X 1	0.31	1.22	1.77
K614-2404	1-1/2 X 1/4	0.68	1.22	2.05
K614-2406	1-1/2 X 3/8	0.68	1.22	2.05
K614-2408	1-1/2 X 1/2	0.70	1.22	2.05
K614-2412	1-1/2 X 3/4	0.67	1.22	2.05



**MERIT
BRASS**

DIRECTING THE FLOW OF *Quality*