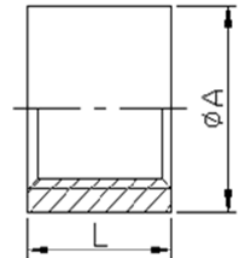


DIMENSIONAL SPECIFICATIONS

STAINLESS STEEL ISO PATTERN FITTINGS 150 LB.

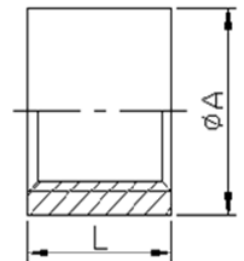
INDUSTRY STANDARD HALF COUPLING (304)

Part #	Size (IN.)	Approx. Net WT. (LB.)	A	L
KP411H-02	1/8	0.02	0.59	0.50
KP411H-04	1/4	0.03	0.73	0.57
KP411H-06	3/8	0.04	0.87	0.59
KP411H-08	1/2	0.06	1.03	0.70
KP411H-12	3/4	0.09	1.19	0.84
KP411H-16	1	0.13	1.48	0.88
KP411H-20	1-1/4	0.20	1.84	1.01
KP411H-24	1-1/2	0.27	2.09	1.13
KP411H-32	2	0.42	2.58	1.30
KP411H-40	2-1/2	0.67	3.11	1.49
KP411H-48	3	0.99	3.76	1.65
KP411H-64	4	1.47	4.77	1.91



INDUSTRY STANDARD HALF COUPLING (316)

Part #	Size (IN.)	Approx. Net WT. (LB.)	A	L
KP611H-02	1/8	0.02	0.59	0.50
KP611H-04	1/4	0.03	0.73	0.57
KP611H-06	3/8	0.04	0.87	0.59
KP611H-08	1/2	0.06	1.03	0.70
KP611H-12	3/4	0.08	1.19	0.84
KP611H-16	1	0.13	1.48	0.88
KP611H-20	1-1/4	0.20	1.84	1.01
KP611H-24	1-1/2	0.27	2.09	1.13
KP611H-32	2	0.42	2.58	1.30
KP611H-40	2-1/2	0.67	3.11	1.49
KP611H-48	3	0.99	3.76	1.65
KP611H-64	4	1.47	4.77	1.91



**MERIT
BRASS**

DIRECTING THE FLOW OF *Quality*