

PFXC1711

KIGER SINGLE HANDLE

KITCHEN FAUCET



Model Numbers

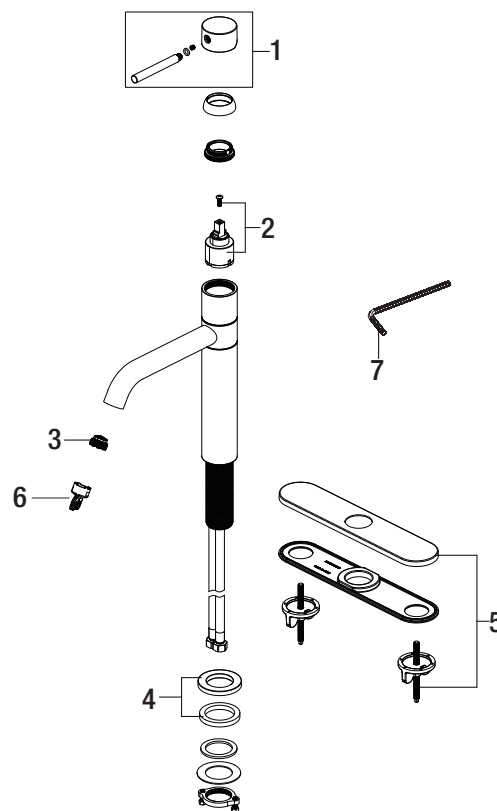
| | |
|-------------|----------------|
| PFXC1711CP | Chrome |
| PFXC1711ZBN | Brushed nickel |
| PFXC1711MB | Matte black |

| No. | Item | Part Number | Material Type |
|-----|-----------------------------|---------------|---------------|
| 1 | Handle | OBPF7RP13334* | Zinc alloy |
| 2 | Cartridge & Screw | OBPF2RP20094 | Ceramic |
| 3 | Aerator | OBPF5F30001 | Pom |
| 4 | Flange | OBPF1F80015* | Brass |
| 5 | Optional Deckplate Assembly | OBPF11711DP* | Zinc alloy |
| 6 | Plastic Wrench | OBPF5F30002 | Pom |
| 6 | 2.5mm Hex allen wrench | OBPF1RP70221 | Steel |

*indicate finish



PFXC1711CP



Warranty and Codes

This product comes complete with installation, operating, care and maintenance instructions. This PROFLO faucet carries a limited lifetime warranty when installed in residential applications. The warranty is five years in commercial applications. This product meets ANSI: A112.18.1M.

*Compliant with lead content requirements of California AB1953

