

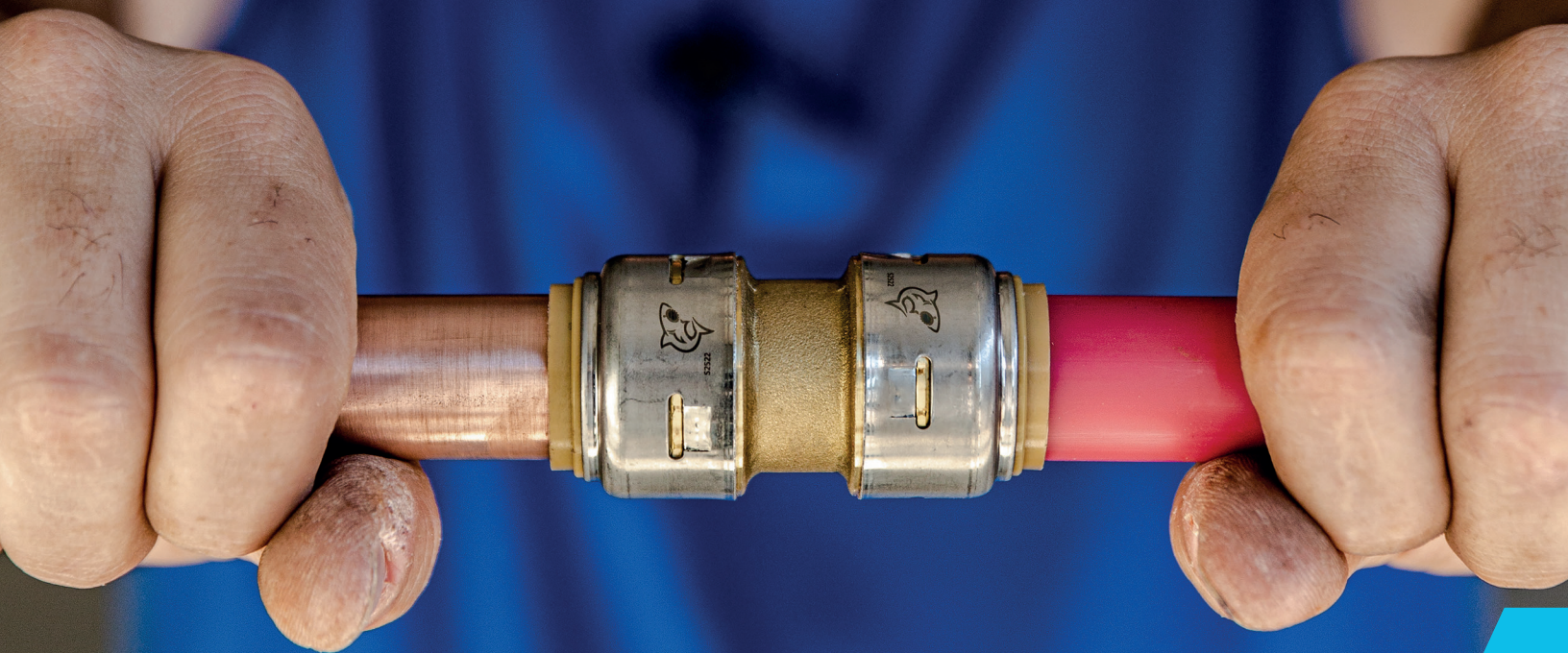
SharkBite
Plumbing
System

Product
Catalog



SharkBite™

Plumbing System



For more than two decades, SharkBite has been at the forefront of innovating solutions that help the plumbing trade work more productively and efficiently. As the leader of push-to-connect plumbing, we create solutions that works across a wide range of applications, including service and repair, remodel, repiping and new construction.

Table of contents

Welcome to our complete range of products and solutions.

SharkBite Max™ Fittings

SharkBite Max™ Fittings	10
Transition Fittings	12
Flexible Water Heater & Softener Connectors	12
Stops & Fixture Supply Fittings	13
Additional Products	15
Kits	15
Ball Valves	16

Push-to-Connect Fittings

SharkBite (1st gen) Fittings	22
PVC and Polybutylene Transition Fittings	28
Flexible Water Heater & Softener Connectors	29
Stops & Fixture Supply Fittings	30
Additional Products	33
Kits	35
Tools and Accessories	37
Ball Valves	40
Check Valves	41
Outdoor Hose Valves	41
Pressure Regulating Valves	43
Thermostatic Mixing Valves	44
Thermal Expansion Relief Valve	45
Temperature & Pressure Relief Valves	45

EvoPEX Push-to-Connect Fittings

EvoPEX Fittings	48
Supply Stops	51
Ball Valves	51
Tools	51

PEX-a Expansion Fittings

PEX-A F1960 Poly Fittings	54
PEX-A F1960 Brass Fittings	56
PEX-A F1960 Valves	58
PEX-A F1960 Rings	58
Additional Products	58

PEX Crimp & Clamp Fittings

PEX Poly Fittings	62
PEX Brass Fittings	64
Transition Fittings	68
Supply Stops	68
Stub-outs, Manifolds & Arrestors	69
Ball Valves	69
Outlet Boxes & Washing Machine Valves	70
Tools & Accessories	71

PEX Pipe

PEX-a Pipe	76
PEX-b Pipe	77
Reclaimed Water PEX Pipe	78
Oxygen Barrier PEX Pipe	78

One family of brands, one solution.

RWC is a global leader and manufacturer of plumbing solutions and water control systems for residential and commercial applications. The RWC portfolio includes industry-leading brands: SharkBite™ push-to-connect plumbing solutions; HoldRite™ engineered plumbing and mechanical solutions; Cash Acme™ control valves; John Guest™ fittings and fluid dispense products and Eastman™ and EZ-Flo™ appliance connectors, supply lines, stop valves and gas connectors.



Pipe, Fittings and Valves

PEX-a, PEX-b, crimp, expansion and push-to-connect fittings and valves for residential and commercial applications.



Engineered Solutions

Secondary pipe supports, acoustic noise and vibration plumbing solutions, firestop systems, DWV testing solutions and water heater accessories.



Water Control Valves

Pressure regulating valves, thermostatic mixing valves and temperature & pressure relief valves for safeguarding water systems.



Specialist Industry Solutions

Fluid dispense and push-to-connect products for specialist industries and OEM's.



Appliance Installation and Repair

Premium quality appliance and plumbing connectors, pans, outlet boxes, expansion tanks and more.



Kitchen and Bath Accessories

Toilet and faucet repair, bath accessories, faucets, sinks, tubing and drain parts.





THE SHARK GOT AN EVEN STRONGER BITE

The next generation of SharkBite push-to-connect technology brings additional strength and speed to your installations. Re-engineered and enhanced, SharkBite Max fittings build on our trusted push-to-connect technology with key improvements for better connections.

Speed and ease of use

Insert pipe using half the insertion effort when compared to the 1st generation SharkBite fittings.* No special tools, glue or solder required, which means more productivity and less risk of installation errors.

Stronger

Features stainless-steel reinforcing collar that provides added strength and durability, enabling the fittings to withstand 2x the burst pressure when compared to 1st generation SharkBite fittings.

Versatility

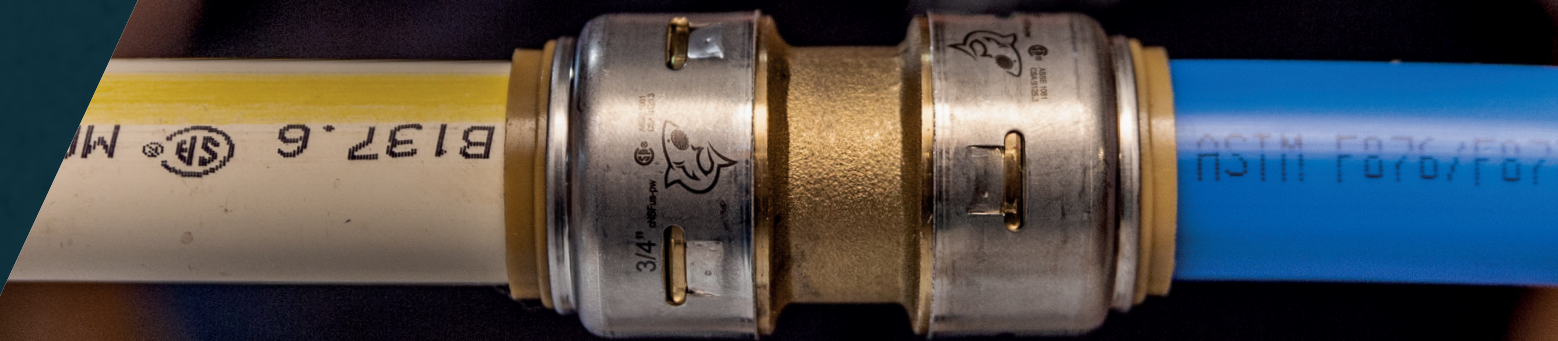
Compatible with PEX, copper, CPVC, PE-RT and HDPE SRD-9** pipe. Transition fittings are also available for PVC and polybutylene pipe.

Code approved

Approved for underground and behind-the-wall applications with no access panels. Wrapping required when burying underground.

*Comparison relates to 1st generation SharkBite push-to-connect products.

**HDPE SRD-9 installations must use a tube stiffener. Sold separately by HDPE manufacturer.



SharkBite Max

plumbing system

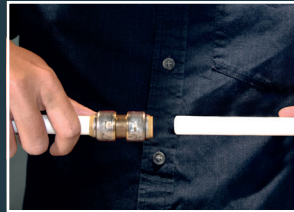
How to install SharkBite Max push-to-connect products.

Cut



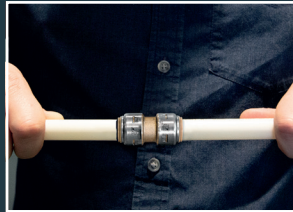
Cut the pipe square, removing rough edges and debris. Mark the pipe to the correct insertion depth.

Push



Push pipe and fitting together up to the depth mark.

Done



Disconnect



Using the disconnect clip fittings can be removed.

SharkBite Max Fittings / Pipe Size Compatibility / Pipe Insertion Depth

SharkBite Fitting Size (In.)	Nominal Pipe Size	Pipe OD Size (In.)	Pipe Insertion Depth Fraction (In.)	Pipe Insertion Depth (MM)
1/2	1/2 in. CTS	5/8	1	25
3/4	3/4 in. CTS	7/8	1-1/4	32

SharkBite Max fittings and accessories are third party certified and in compliance with national and local plumbing codes, including the Uniform Plumbing Code (UPC), International Plumbing Code (IPC), and the National Plumbing Code of Canada. Check your local jurisdiction for compliance in your area.

For the most current certifications, please visit sharkbite.com.

SharkBite Max Fittings

Couplings



Part number	Description	Qty
UR008	1/2 in. x 1/2 in. SharkBite Max Coupling	12
UR016	3/4 in. x 3/4 in. SharkBite Max Coupling	12

Reducing Couplings



Part number	Description	Qty
UR058	3/4 in. x 1/2 in. SharkBite Max Reducing Coupling	12

Slip Couplings



Part number	Description	Qty
UR3008	1/2 in. x 1/2 in. SharkBite Max Slip Coupling	3
UR3016	3/4 in. x 3/4 in. SharkBite Max Slip Coupling	3

Female Adapters



Part number	Description	Qty
UR068	1/2 in. x 3/4 in. SharkBite Max FNPT Reducing Adapter	6
UR072	1/2 in. x 1/2 in. SharkBite Max FNPT Adapter	12
UR092	3/4 in. x 1/2 in. SharkBite Max FNPT Bullnose Adapter	6
UR088	3/4 in. x 3/4 in. SharkBite Max FNPT Adapter	6

Male Connectors



Part number	Description	Qty
UR116	1/2 in. x 3/4 in. SharkBite Max MNPT Reducing Adapter	6
UR120	1/2 in. x 1/2 in. SharkBite Max MNPT Adapter	12
UR134	3/4 in. x 3/4 in. SharkBite Max MNPT Adapter	12
UR138	3/4 in. x 1/2 in. SharkBite Max MNPT Bullnose Adapter	12

Slip Adapters



Part number	Description	Qty
UR3120	1/2 in. SharkBite Max Slip MNPT Adapter	6
UR3134	3/4 in. SharkBite Max Slip MNPT Adapter	6

90° Elbows



Part number	Description	Qty
UR248	1/2 in. x 1/2 in. SharkBite Max 90° Elbow	12
UR256	3/4 in. x 3/4 in. SharkBite Max 90° Elbow	6

SharkBite Max Fittings

90° Elbows with Drain/Vent



Part number	Description	Qty
UR5248	1/2 in. x 1/2 in. SharkBite Max 90° Elbow with 1/8 in. NPSM Drain	6
UR5256	3/4 in. x 3/4 in. SharkBite Max 90° Elbow with 1/8 in. NPSM Drain	6

45° Elbows



Part number	Description	Qty
UR648	1/2 in. x 1/2 in. SharkBite Max 45° Elbow	6
UR656	3/4 in. x 3/4 in. SharkBite Max 45° Elbow	6

Female Adapter Elbow



Part number	Description	Qty
UR308	1/2 in. x 1/2 in. SharkBite Max FNPT Adapter Elbow	6
UR314	3/4 in. x 3/4 in. SharkBite Max FNPT Adapter Elbow	3

Male Adapter Elbows



Part number	Description	Qty
UR280	1/2 in. x 1/2 in. SharkBite Max MNPT Adapter Elbow	6

Reducing Elbows



Part number	Description	Qty
UR274	3/4 in. x 1/2 in. SharkBite Max 90° Elbow	6

Drop-Ear Elbows



Part number	Description	Qty
UR249	1/2 in. x 1/2 in. SharkBite Max Drop Ear Elbow	12
UR334	1/2 in. x 1/2 in. SharkBite Max FNPT Drop Ear Elbow	6
UR340	3/4 in. x 3/4 in. SharkBite Max FNPT Drop Ear Elbow	6

End Caps



Part number	Description	Qty
UR514	1/2 in. SharkBite Max Cap	12
UR518	3/4 in. SharkBite Max Cap	6

Dishwasher Elbows



Part number	Description	Qty
UR281	1/2 in. x 3/8 in. SharkBite Max MNPT Dishwasher Elbow	6

Tees



Part number	Description	Qty
UR362	1/2 in. x 1/2 in. x 1/2 in. SharkBite Max Tee	12
UR370	3/4 in. x 3/4 in. x 3/4 in. SharkBite Max Tee	6

Reducing Tees



Part number	Description	Qty
UR454	3/4 in. x 1/2 in. x 1/2 in. SharkBite Max Reducing Tee	6
UR444	3/4 in. x 1/2 in. x 3/4 in. SharkBite Max Reducing Tee	6
UR412	3/4 in. x 3/4 in. x 1/2 in. SharkBite Max Reducing Tee	6

Cross Tee



Part number	Description	Qty
UR380A	3/4 in. x 3/4 in. x 1/2 in. x 1/2 in. SharkBite Max Cross Tee	3

Slip Tees (Slip End only suitable for Copper and cPVC)



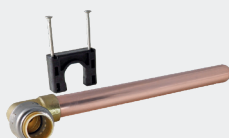
Part number	Description	Qty
UR3362	1/2 in. x 1/2 in. x 1/2 in. SharkBite Max Slip Tee	3
UR3370	3/4 in. x 3/4 in. x 3/4 in. SharkBite Max Slip Tee	3

Female Center Slip Tees (Slip End only suitable for Copper and cPVC)



Part number	Description	Qty
UR3486	3/4 in. x 3/4 in. x 3/4 in. SharkBite Max FNPT Slip Tee	3

Stub Out Elbows



Part number	Description	Qty
UR351A	1/2 in. Elbow x 1/2 in. Copper Tube 8 in. Length SharkBite Max Stub-Out Elbow	6

SharkBite Max Transition Fittings

Polybutylene Transition Couplings



Part number	Description	Qty
UR4008	1/2 in. PB x 1/2 in. CTS SharkBite Max Transition Coupling	6
UR4016	3/4 in. PB x 3/4 in. CTS SharkBite Max Transition Coupling	6

Each polybutylene transition coupling has color-coordinated collars on each end to identify which side goes with which pipe - the gray collar end is compatible with polybutylene pipe and the tan collar end is compatible with PEX, copper, CPVC, PE-RT and HDPE SDR-9 pipe.

Polybutylene Transition Elbows



Part number	Description	Qty
UR4248	1/2 in. PB x 1/2 in. CTS SharkBite Max Transition Elbow	6
UR4256	3/4 in. PB x 3/4 in. CTS SharkBite Max Transition Elbow	6

Each polybutylene transition coupling has color-coordinated collars on each end to identify which side goes with which pipe - the gray collar end is compatible with polybutylene pipe and the tan collar end is compatible with PEX, copper, CPVC, PE-RT and HDPE SDR-9 pipe.

SharkBite Max Flexible Water Heater & Softener Connectors

Braided Flexible Water Heater Connectors



Part number	Description	Qty
UR3068FX12	1/2 in. x 3/4 in. FIP, 12 in. Stainless Steel Braided SharkBite Max Water Heater Connector	12
UR3068FX15	1/2 in. x 3/4 in. FIP, 15 in. Stainless Steel Braided SharkBite Max Water Heater Connector	12
UR3068FX18	1/2 in. x 3/4 in. FIP, 18 in. Stainless Steel Braided SharkBite Max Water Heater Connector	12
UR3068FX24	1/2 in. x 3/4 in. FIP, 24 in. Stainless Steel Braided SharkBite Max Water Heater Connector	12
UR3088FX12	3/4 in. x 3/4 in. FIP, 12 in. Stainless Steel Braided SharkBite Max Water Heater Connector	12
UR3088FX15	3/4 in. x 3/4 in. FIP, 15 in. Stainless Steel Braided SharkBite Max Water Heater Connector	12
UR3088FX18	3/4 in. x 3/4 in. FIP, 18 in. Stainless Steel Braided SharkBite Max Water Heater Connector	12
UR3088FX24	3/4 in. x 3/4 in. FIP, 24 in. Stainless Steel Braided SharkBite Max Water Heater Connector	12

Braided Flexible Water Heater Connectors with Ball Valves



Part number	Description	Qty
UR3068FX18BV	1/2 in. x 3/4 in. FIP, 18 in. Stainless Steel Braided SharkBite Max Water Heater Connector with Ball Valve	12
UR3088FX18BV	3/4 in. x 3/4 in. FIP, 18 in. Stainless Steel Braided SharkBite Max Water Heater Connector with Ball Valve	12

Corrugated Stainless Steel Water Heater Connectors



Part number	Description	Qty
URSS3088FX12	3/4 in. x 3/4 in. FIP, 12 in. Stainless Steel Corrugated SharkBite Max Water Heater Connector	12
URSS3088FX18	3/4 in. x 3/4 in. FIP, 18 in. Stainless Steel Corrugated SharkBite Max Water Heater Connector	12
URSS3134FX18	3/4 in. x 3/4 in. MIP, 18 in. Stainless Steel Corrugated SharkBite Max Water Heater Connector	6
URSS3088FX24	3/4 in. x 3/4 in. FIP, 24 in. Stainless Steel Corrugated SharkBite Max Water Heater Connector	12

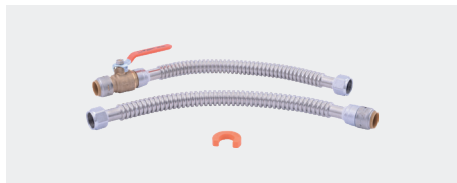
Corrugated Stainless Steel Water Heater Connectors with Ball Valves



Part number	Description	Qty
URSS3068FX18BV	1/2 in. x 3/4 in. FIP, 18 in. Stainless Steel Corrugated SharkBite Max Water Heater Connector with Ball Valve	12
URSS3088FX18BV	3/4 in. x 3/4 in. FIP, 18 in. Stainless Steel Corrugated SharkBite Max Water Heater Connector with Ball Valve	12

SharkBite Max Flexible Water Heater & Softener Connectors

Braided Flexible Water Heater Connectors Kit with Ball Valve



Kit contains one 3/4 in. FIP X 3/4 in. SB Max X 18 in. Hose, one 3/4 in. FIP X 3/4 in. SharkBite Max Ball Valve X 18 in. Hose, and one 3/4 in. Disconnect Clip

Part number	Description	Qty
UR24680	Kit contains one 3/4 in. FIP x 3/4 in. SB Max X 18 in. Hose, one 3/4 in. FIP x 3/4 in. SB Max Ball Valve x 18 in. Hose, and one 3/4 in. Disconnect Clip	3

Braided Flexible Coupling Hoses



Part number	Description	Qty
UR3008FX18	1/2 in. x 1/2 in., 18 in. Stainless Steel Braided SharkBite Max Repair Hose	12
UR3016FX18	3/4 in. x 3/4 in., 18 in. Stainless Steel Braided SharkBite Max Repair Hose	12

Braided Water Softener Connectors



Part number	Description	Qty
UR3086FX24	3/4 in. x 1 in. FIP, 24 in. Stainless Steel Braided SharkBite Max Water Softener Connector	12

Corrugated Stainless Steel Water Softener Connectors



Part number	Description	Qty
URSS3086FX24	3/4 in. x 1 in. FIP, 24 in. Stainless Steel Corrugated SharkBite Max Water Softener Connector	12

SharkBite Max Stops & Fixture Supply Fittings

Angle Stops



Part number	Description	Qty
UR23336	1/2 in. Push-to-Connect x 1/4 in. Compression Angle Stop - SharkBite Max	6
UR23036	1/2 in. Push-to-Connect x 3/8 in. Compression Angle Stop - SharkBite Max	12
UR23036BN	1/2 in. Push-to-Connect x 3/8 in. Compression Brushed Nickel Angle Stop - SharkBite Max	6
UR24946	1/2 in. Push-to-Connect x 1/2 in. MIP Angle Stop - SharkBite Max	6

Straight Stops



Part number	Description	Qty
UR23337	1/2 in. Push-to-Connect x 1/4 in. Compression Straight Stop - SharkBite Max	6
UR23037	1/2 in. Push-to-Connect x 3/8 in. Compression Straight Stop - SharkBite Max	12
UR23037BN	1/2 in. Push-to-Connect x 3/8 in. Compression Brushed Nickel Straight Stop - SharkBite Max	6
UR24947	1/2 in. Push-to-Connect x 1/2 in. MIP Straight Stop - SharkBite Max	6

SharkBite Max Stops & Fixture Supply Fittings

Tee Stops



Part number	Description	Qty
UR24983	1/2 in. Push-to-Connect x 1/2 in. Push-to-Connect x 1/4 in. OD Compression - SharkBite Max	6
UR24984	1/2 in. Push-to-Connect x 1/2 in. Push-to-Connect x 3/8 in. OD Compression - SharkBite Max	6
UR24985	3/4 in. Push-to-Connect x 3/4 in. Push-to-Connect x 1/4 in. OD Compression - SharkBite Max	6

Dual Outlet Stop



Part number	Description	Qty
UR25558	1/2 in. Push-to-Connect x 3/8 in. OD x 3/8 in. OD Comp Dual Outlet Stop - SharkBite Max	6

Dual Shut-Off Stop Valve



Part number	Description	Qty
URDS123814	1/2 in. Push-to-Connect x 3/8 in. OD x 1/4 in. OD Comp Dual Stop Valve - SharkBite Max	6
URDS123838	1/2 in. Push-to-Connect x 3/8 in. OD x 3/8 in. OD Comp Dual Stop Valve - SharkBite Max	6

Angle Stop Supply Lines



Part number	Description	Qty
UR24656	1/2 in. SharkBite Max Angle Stop x 7/8 in. Ballcock 12 in. Toilet Connector	6
UR24657	1/2 in. SharkBite Max Angle Stop x 1/2 in. NPSM 20 in. Faucet Connector	6

Straight Stop Supply Lines



Part number	Description	Qty
UR24686	1/2 in. SharkBite Max Straight Stop x 7/8 in. Ballcock 16 in. Toilet Connector	6
UR24687	1/2 in. SharkBite Max Straight Stop x 1/2 in. NPSM 30 in. Faucet Connector	6

SharkBite Max Additional Products

Water Hammer Arrestors



Part number	Description	Qty
UR22630	1/2 in. SharkBite Max Residential	3
UR22632	3/4 in. SharkBite Max Residential	3

Pressure Gauges



Part number	Description	Qty
UR24438	3/4 in. Pressure Gauge Assembly with SharkBite Max Tee	24

SharkBite Max Kits

Water Filter Installation Kit



Part number	Description	Qty
UR25561	3/4 in. SharkBite Max Water Filter Installation Kit	6

Shower/Tub Installation Kit



Part number	Description	Qty
UR25567	Shower/Tub SharkBite Max Installation Kit	3

SharkBite Max Ball Valves

Ball Valves



Part number	Description	Qty
UR22222	1/2 in. x 1/2 in. SharkBite Max Quarter-Turn Ball Valve	12
UR22185	3/4 in. x 3/4 in. SharkBite Max Quarter-Turn Ball Valve	12

Reducing Ball Valves



Part number	Description	Qty
UR22973	3/4 in. x 1/2 in. SharkBite Max Quarter-Turn Reducing Ball Valve	6

Ball Valves with FNPT Connectors



Part number	Description	Qty
UR22182	1/2 in. SharkBite Max x 1/2 in. FNPT Adapter Quarter-Turn Ball Valve	6
UR22186	3/4 in. SharkBite Max x 3/4 in. FNPT Adapter Quarter-Turn Ball Valve	6

Ball Valves with Drain/Vent and Mounting Bracket



Part number	Description	Qty
UR24615	1/2 in. x 1/2 in. SharkBite Max Quarter-Turn Ball Valve with Drain and Mounting Bracket	12
UR24616	3/4 in. x 3/4 in. SharkBite Max Quarter-Turn Ball Valve with Drain and Mounting Bracket	6

Slip Ball Valves



Part number	Description	Qty
UR24735	1/2 in. x 1/2 in. SharkBite Max Slip Quarter-Turn Ball Valve	6
UR24736	3/4 in. x 3/4 in. SharkBite Max Slip Quarter-Turn Ball Valve	6

Check Valves



Part number	Description	Qty
UR2008	1/2 in. x 1/2 in. SharkBite Max Check Valve	6
UR2016	3/4 in. x 3/4 in. SharkBite Max Check Valve	6





Redefining **efficiency**

1st Generation SharkBite **Push-to-Connect fittings**

SharkBite has always taken the lead on redefining efficiency to help the trade address challenges and enhance jobsite performance. Whether you are repairing a water line, installing a water heater or remodeling a home, SharkBite push-to-connect fittings save time, reduce cost and provide unparalleled versatility for transitioning pipe types.



SharkBite

plumbing system

How to install SharkBite push-to-connect products.

Cut



Cut the pipe square, removing rough edges and debris. Mark the pipe to the correct insertion depth.

Push



Push pipe and fitting together up to the depth mark.

Done



Disconnect



Fittings can be removed using a disconnect clip, tongs or Pro disconnect tool..

SharkBite Fittings / Pipe Size Compatibility / Pipe Insertion Depth

SharkBite Fitting Size (in.)	Nominal Pipe Size	Pipe OD Size (in.)	Pipe Insertion Depth Fraction (in.)	Pipe Insertion Depth (MM)
1/4	1/4 in. CTS	3/8	13/16	21
3/8	3/8 in. CTS	1/2	15/16	24
1/2	1/2 in. CTS	5/8	15/16	24
5/8	5/8 in. CTS	3/4	1-1/8	29
3/4	3/4 in. CTS	7/8	1-1/8	28
1	1 in. CTS	1-1/8	1-5/16	33
1-1/4	1-1/4 in. CTS	1-3/8	1-7/8	48
1-1/2	1-1/2 in. CTS	1-5/8	2-1/16	52
2	2 in. CTS	2-1/8	2-3/16	56

SharkBite fittings and accessories are third party certified and in compliance with national and local plumbing codes, including the Uniform Plumbing Code (UPC), International Plumbing Code (IPC), and the National Plumbing Code of Canada. Check your local jurisdiction for compliance in your area.

For the most current certifications, please visit sharkbite.com.

SharkBite Fittings (1st Generation)

Coupling



Part number in.	Description	Qty
U004LF	1/4 in. (3/8 in. OD) X 1/4 in. (3/8 in. OD) Coupling	6
U006LF	3/8 in. (1/2 in. OD) X 3/8 in. (1/2 in. OD) Coupling	6
U008LF	1/2 in. X 1/2 in. Coupling	12
U016LF	3/4 in. X 3/4 in. Coupling	12
U020LF	1 in. X 1 in. Coupling	6
UXL0135	1-1/4 in. x 1-1/4 in. Coupling	1
UXL0141	1-1/2 in. x 1-1/2 in. Coupling	1
UXL0154	2 in. x 2 in. Coupling	1

* For PEX applications, stiffeners are sold separately.

Reducing Coupling



Part number	Description	Qty
U050LF	1/4 in. (3/8 in. OD) X 1/2 in. Reducing Coupling	6
U009LF	3/8 in. (1/2 in. OD) X 1/2 in. Reducing Coupling	6
U058LF	3/4 in. X 1/2 in. Reducing Coupling	12
U060LF	1 in. X 3/4 in. Reducing Coupling	6
UXL013528	1-1/4 in. x 1 in. Reducing Coupling	1
UXL014128	1-1/2 in. x 1 in. Reducing Coupling	1
UXL014135	1-1/2 in. x 1-1/4 in. Reducing Coupling	1
UXL015441	2 in. x 1-1/2 in. Reducing Coupling	1

* For PEX applications, stiffeners are sold separately.

Slip Coupling (only suitable for copper and CPVC)



Part number	Description	Qty
U3008LF	1/2 in. X 1/2 in. Slip Coupling	3
U3016LF	3/4 in. X 3/4 in. Slip Coupling	3
U3020LF	1 in. X 1 in. Slip Coupling	1
UXL0635	1-1/4 in. x 1-1/4 in. Slip Coupling	1
UXL0641	1-1/2 in. 1-1/2 in. Slip Coupling	1
UXL0654	2 in. x 2 in. Slip Coupling	1

* For PEX applications, stiffeners are sold separately.

SharkBite (1st Generation) Fittings

Female Connector



Part number	Description	Qty
U066LF	1/4 in.(3/8 in. OD) X 1/2 in. FNPT Reducing Adapter	6
U070LF	3/8 in. (1/2 in. OD) X 1/2 in. FNPT Reducing Adapter	6
U068LF	1/2 in. X 3/4 in. FNPT Reducing Adapter	12
U072LF	1/2 in. X 1/2 in. FNPT Adapter	6
U092LF	3/4 in. X 1/2 in. FNPT Bullnose Adapter	6
U088LF	3/4 in. X 3/4 in. FNPT Adapter	6
U094LF	1 in. X 1 in. FNPT Adapter	6
UXL113532F	1-1/4 in. x 1-1/4 in. FNPT Adapter	1
UXL114140F	1-1/2 in. x 1-1/2 in. FNPT Adapter	1
UXL115450F	2 in. x 2 in. FNPT Adapter	1

* For PEX applications, stiffeners are sold separately.

Male Connector



Part number	Description	Qty
U110LF	1/4 in. x 1/2 in. MNPT Reducing Adapter	6
U118LF	3/8 in. (1/2 in. OD) x 1/2 in. MNPT Reducing Adapter	6
U116LF	1/2 in. x 3/4 in. MNPT Reducing Adapter	12
U120LF	1/2 in. x 1/2 in. MNPT Adapter	6
U134LF	3/4 in. x 3/4 in. MNPT Adapter	12
U138LF	3/4 in. x 1/2 in. MNPT Bullnose Adapter	6
U139LF	3/4 in. x 1 in. MNPT Adapter	6
U140LF	1 in. x 1 in. MNPT Adapter	6
U142LF	1 in. x 3/4 in. MNPT Adapter	6
UXL113532M	1-1/4 in. x 1-1/4 in. MNPT Adapter	1
UXL114140M	1-1/2 in. x 1-1/2 in. MNPT Adapter	1
UXL115450M	2 in. x 2 in. MNPT Adapter	1

* For PEX applications, stiffeners are sold separately.

Slip Male Adapter



Part number	Description	Qty
U3120LF	1/2 in. Slip MNPT Adapter	6
U3134LF	3/4 in. Slip MNPT Adapter	6
U3140LF	1 in. Slip MNPT Adapter	6

Threaded Adapter



Part number	Description	Qty
U766LF	3/4 in. CTS x 3/4 in. FNPT Threaded Adapter	6
U772LF	1 in. CTS x 1 in. FNPT Threaded Adapter	6

90° Elbow



Part number	Description	Qty
U244LF	1/4 in. (3/8 in. OD) X 1/4 in. (3/8 in. OD) 90° Elbow	6
U246LF	3/8 in. (1/2 in. OD) X 3/8 in. (1/2 in. OD) 90° Elbow	6
U248LF	1/2 in. X 1/2 in. 90° Elbow	12
U256LF	3/4 in. X 3/4 in. 90° Elbow	6
U260LF	1 in. X 1 in. 90° Elbow	6
UXL0235	1-1/4 in. 1-1/4 in. 90° Elbow *	1
UXL0241	1-1/2 in. x 1-1/2 in. 90° Elbow *	1
UXL0254	2 in. x 2 in. 90° Elbow *	1

* For PEX applications, stiffeners are sold separately.

90° Elbow with Drain/Vent



Part number	Description	Qty
U5248LF	1/2 in. x 1/2 in. 90° Elbow with 1/8" NPSM Drain	6
U5256LF	3/4 in. x 3/4 in. 90° Elbow with 1/8" NPSM Drain	6
U5260LF	1 in. x 1 in. 90° Elbow with 1/8" NPSM Drain	3
24377	1/8 in. NPSM Replacement Drain Cap	1

90° Street Elbow



Part number	Description	Qty
UXL0935	1-1/4 in. x 1-1/4 in. 90° Street Elbow*	1
UXL0941	1-1/2 in. x 1-1/2 in. 90° Street Elbow*	1
UXL0954	2 in. x 2 in. 90° Street Elbow*	1

* For PEX applications, stiffeners are sold separately.

45° Elbow



Part number	Description	Qty
U648LF	1/2 in. x 1/2 in.	12
U656LF	3/4 in. x 3/4 in.	6
U660LF	1 in. x 1 in.	12
UXL0535	1-1/4 in. x 1-1/4 in. *	1
UXL0541	1-1/2 in. x 1-1/2 in. *	1
UXL0554	2 in. x 2 in. *	1

* For PEX applications, stiffeners are sold separately.

45° Street Elbow



Part number	Description	Qty
U615LF	1/2 in. x 1/2 in. CTS Tail Adapter (CTS end inserts into any 1/2 in. SB fitting)	6
U620LF	3/4 in. x 3/4 in. CTS Tail Adapter (CTS end inserts into any 3/4 in. SB fitting)	6
UXL0735	1-1/4 in. x 1-1/4 in. *	1
UXL0741	1-1/2 in. x 1-1/2 in. *	1
UXL0754	2 in. x 2 in. *	1

* For PEX applications, stiffeners are sold separately.

SharkBite (1st Generation) Fittings

Female Elbow



Part number	Description	Qty
U308LF	1/2 in. X 1/2 in. FNPT Adapter Elbow	6
U314LF	3/4 in. X 3/4 in. FNPT Adapter Elbow	3

Male Elbow



Part number	Description	Qty
U280LF	1/2 in. X 1/2 in. MNPT Adapter Elbow	6
U286LF	3/4 in. X 3/4 in. MNPT Adapter Elbow	6

Reducing Elbow



Part number	Description	Qty
U272LF	1/2 in. X 3/8 in. (1/2 in. OD) 90° Elbow	12
U274LF	3/4 in. X 1/2 in. SharkBite Max 90° Elbow	6
U278LF	3/4 in. X 1/2 in. 90° Elbow	3

Drop-Ear Elbow



Part number	Description	Qty
U332LF	3/8 in. (1/2 in. OD) X 1/2 in. FNPT Drop Ear Elbow	6
U249LF	1/2 in. Push-to-Connect X 1/2 in. Push-to-Connect Drop Ear Elbow	12
U334LF	1/2 in. X 1/2 in. FNPT Drop Ear Elbow	6
U340LF	3/4 in. X 3/4 in. FNPT Drop Ear Elbow	6

Hy-Ear Elbow



Part number	Description	Qty
U335LF	1/2 in. X 1/2 in. FNPT Hy-Ear Elbow	6

Shower Test Plug



Part number	Description	Qty
25828	1/2 in. MNPT	1

Dishwasher Elbow



Part number	Description	Qty
U276LF	1/4 in. (3/8 in. OD) X 3/8 in. MNPT Dishwasher Elbow	6
U2276LF	1/4 in. (3/8 in. OD) X 3/4 in. Garden Hose Thread Elbow	6
U281LF	1/2 in. X 3/8 in. MNPT Dishwasher Elbow	6

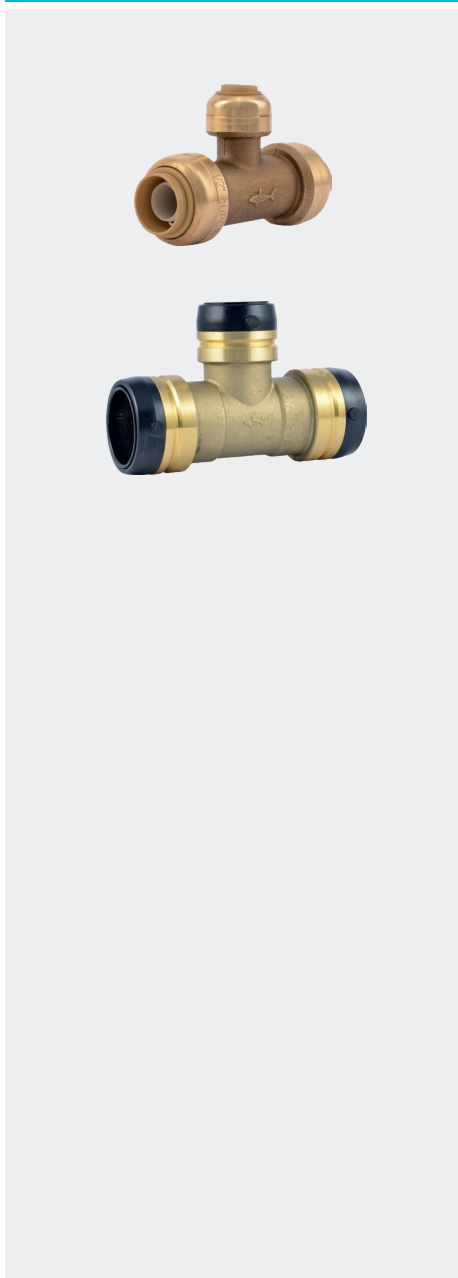
Tee



Part number	Description	Qty
U358LF	1/4 in. (3/8 in. OD) x 1/4 in. (3/8 in. OD) x 1/4 in. (3/8 in. OD)	6
U360LF	3/8 in. (1/2 in. OD) x 3/8 in. (1/2 in. OD) x 3/8 in. (1/2 in. OD)	6
U362LF	1/2 in. x 1/2 in. x 1/2 in.	12
U370LF	3/4 in. x 3/4 in. x 3/4 in.	6
U374LF	1 in. x 1 in. x 1 in.	3
UXL0835	1-1/4 in. x 1-1/4 in. x 1-1/4 in. *	1
UXL0841	1-1/2 in. x 1-1/2 in. x 1-1/2 in. *	1
UXL0854	2 in. x 2 in. x 2 in. *	1

*For PEX applications, stiffeners are sold separately.

Reducing Tee



Part number	Description	Qty
U364LF	3/8 in. (1/2 in. OD) x 3/8 in. (1/2 in. OD) x 1/2 in.	6
U359LF	1/2 in. x 1/2 in. x 1/4 in. (3/8 in. OD)	6
U363LF	1/2 in. x 1/2 in. x 3/8 in. (1/2 in. OD)	6
U454LF	3/4 in. x 1/2 in. x 1/2 in.	6
U412LF	3/4 in. x 3/4 in. x 1/2 in.	6
U444LF	3/4 in. x 1/2 in. x 3/4 in.	6
U416LF	1 in. x 1 in. x 3/4 in.	3
UXL08351635	1-1/4 in. x 1/2 in. x 1-1/4 in. *	1
UXL08352216	1-1/4 in. x 3/4 in. x 1/2 in. *	1
UXL08352222	1-1/4 in. x 3/4 in. x 3/4 in. *	1
UXL08352228	1-1/4 in. x 3/4 in. x 1 in. *	1
UXL08352235	1-1/4 in. x 3/4 in. x 1-1/4 in. *	1
UXL08352816	1-1/4 in. x 1 in. x 1/2 in. *	1
UXL08352822	1-1/4 in. x 1 in. x 3/4 in. *	1
UXL08352828	1-1/4 in. x 1 in. x 1 in. *	1
UXL08353516	1-1/4 in. x 1-1/4 in. x 1/2 in. *	1
UXL08353522	1-1/4 in. x 1-1/4 in. x 3/4 in. *	1
UXL08353528	1-1/4 in. x 1-1/4 in. x 1 in. *	1
UXL08414122	1-1/2 in. x 1-1/2 in. x 3/4 in. *	1
UXL08412822	1-1/2 in. x 1 in. x 3/4 in. *	1
UXL08412828	1-1/2 in. x 1 in. x 1 in. *	1
UXL08412841	1-1/2 in. x 1 in. x 1-1/2 in. *	1
UXL08413522	1-1/2 in. x 1-1/4 in. x 3/4 in. *	1
UXL08413528	1-1/2 in. x 1-1/4 in. x 1 in. *	1
UXL08413535	1-1/2 in. x 1-1/4 in. x 1-1/4 in. *	1
UXL08414116	1-1/2 in. x 1-1/2 in. x 1/2 in. *	1
UXL08414128	1-1/2 in. x 1-1/2 in. x 1 in. *	1
UXL08414135	1-1/2 in. x 1-1/2 in. x 1-1/4 in. *	1
UXL08544122	2 in. x 1-1/2 in. x 3/4 in. *	1
UXL08544128	2 in. x 1-1/2 in. x 1 in. *	1
UXL08544135	2 in. x 1-1/2 in. x 1-1/4 in. *	1
UXL08544141	2 in. x 1-1/2 in. x 1-1/2 in. *	1
UXL08544154	2 in. x 1-1/2 in. x 2 in. *	1
UXL08545416	2 in. x 2 in. x 1/2 in. *	1
UXL08545422	2 in. x 2 in. x 3/4 in. *	1
UXL08545428	2 in. x 2 in. x 1 in. *	1
UXL08545435	2 in. x 2 in. x 1-1/4 in. *	1
UXL08545441	2 in. x 2 in. x 1-1/2 in. *	1

*For PEX applications, stiffeners are sold separately.

SharkBite (1st Generation) Fittings

Female Center Tee



Part number	Description	Qty
U462LF	3/4 in. x 3/4 in. x 3/4 in. (Utilizes a U766LF thread adapter)	3
U464LF	1 in. x 1 in. x 1 in. (Utilizes a U772LF thread adapter)	3

Female Center Slip Tee (slip end only suitable for copper and CPVC)



Part number	Description	Qty
U3482LF	1/2 in. x 1/2 in. x 1/2 in. FNPT	3
U3486LF	3/4 in. x 3/4 in. x 3/4 in. FNPT	3

Slip Tee (slip end only suitable for copper and CPVC)



Part number	Description	Qty
U3362LF	1/2 in. x 1/2 in. x 1/2 in.	3
U3370LF	3/4 in. x 3/4 in. x 3/4 in.	3
UXL0335	1-1/4 in. x 1-1/4 in. *	1
UXL0341	1-1/2 in. x 1-1/2 in. *	1
UXL0354	2 in. x 2 in. *	1

*For PEX applications, stiffeners are sold separately.

End Cap



Part number	Description	Qty
U512LF	3/8 in. (1/2 in. OD)	6
U514LF	1/2 in.	12
U518LF	3/4 in.	6
U520LF	1 in.	6
UXL0435	1-1/4 in. *	1
UXL0441	1-1/2 in. *	1
UXL0454	2 in. *	1

*For PEX applications, stiffeners are sold separately.

Fitting Reducer (use to connect to smaller pipe sizes)



Part number	Description	Qty
UXL123516	1-1/4 in. x 1/2 in. *	1
UXL123522	1-1/4 in. x 3/4 in. *	1
UXL123528	1-1/4 in. x 1 in. *	1
UXL124116	1-1/2 in. x 1/2 in. *	1
UXL124122	1-1/2 in. x 3/4 in. *	1
UXL124128	1-1/2 in. x 1 in. *	1
UXL125416	2 in. x 1/2 in. *	1
UXL125422	2 in. x 3/4 in. *	1
UXL125428	2 in. x 1 in. *	1
UXL125435	2 in. x 1-1/4 in. *	1
UXL125441	2 in. x 1-1/2 in. *	1

*For PEX applications, stiffeners are sold separately.

Water Softener Fitting



Part number	Description	Qty
U086LF	3/4 in. x 1 in. FIP	12

SharkBite (1st Generation) PVC and Polybutylene Transition Fittings

Polybutylene Transition Coupling



Part number	Description	Qty
U4008LF	1/2 in. PB x 1/2 in. CTS	6
U4016LF	3/4 in. PB x 3/4 in. CTS	6

Polybutylene Transition Elbow



Part number	Description	Qty
U4248LF	1/2 in. PB x 1/2 in. CTS	6
U4256LF	3/4 in. PB x 3/4 in. CTS	6

PVC Transition Coupling



Part number	Description	Qty
UIP4008	1/2 in. CTS x 1/2 in. PVC	6
UIP4016	3/4 in. CTS x 3/4 in. PVC	6
UIP4020	1 in. CTS x 1 in. PVC	3

PVC Slip Coupling



Part number	Description	Qty
UIP3008	1/2 in. PVC x 1/2 in. PVC	3
UIP3016	3/4 in. PVC x 3/4 in. PVC	3
UIP3020	1 in. PVC x 1 in. PVC	2

PVC Male Connector



Part number	Description	Qty
UIP120	1/2 in. PVC x 1/2 in. MNPT	6
UIP134	3/4 in. PVC x 3/4 in. MNPT	6
UIP140	1 in. PVC x 1 in. MNPT	3

PVC Cap



Part number	Description	Qty
UIP514	1/2 in.	12
UIP518	3/4 in.	12
UIP520	1 in.	12

PVC Depth Gauge and Disconnect Clip

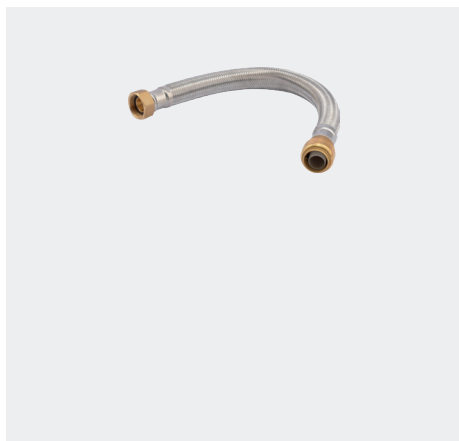


Part number	Description	Qty
UIP710	1/2 in.	12
UIP712	3/4 in.	12
UIP714	1 in.	6

SharkBite (1st Generation) Flexible Water Heater & Softener Connectors

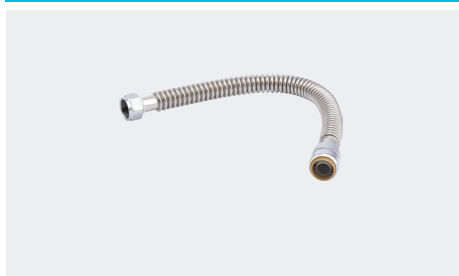
Used to connect water heaters to the hot and cold water lines. Ideal for working in tight spaces and connecting water heaters with existing pipes that may not line up.

Stainless Steel Braided Water Heater Connector



Part number	Description	Qty
U3068FLEX12LF	1/2 in. x 3/4 in. FIP, 12 in.	12
U3068FLEX15LF	1/2 in. x 3/4 in. FIP, 15 in.	12
U3068FLEX18LF	1/2 in. x 3/4 in. FIP, 18 in.	12
U3068FLEX24LF	1/2 in. x 3/4 in. FIP, 24 in.	12
U3088FLEX12LF	3/4 in. x 3/4 in. FIP, 12 in.	12
U3088FLEX15LF	3/4 in. x 3/4 in. FIP, 15 in.	12
U3088FLEX18LF	3/4 in. x 3/4 in. FIP, 18 in.	12
U3088FLEX24LF	3/4 in. x 3/4 in. FIP, 24 in.	12

Stainless Steel Corrugated Water Heater Connector



Part number	Description	Qty
SS3088FLEX12LF	3/4 in. x 3/4 in. FIP, 12 in.	12
SS3088FLEX18LF	3/4 in. x 3/4 in. FIP, 18 in.	12
SS3088FLEX24LF	3/4 in. x 3/4 in. FIP, 24 in.	12
SS3086FLEX24LF	3/4 in. x 1 in. FIP, 24 in.	6
SS3094FLEX24LF	1 in. x 1 in. FIP, 24 in.	6
SS3096FLEX24LF	1 in. x 3/4 in. FIP, 24 in.	6

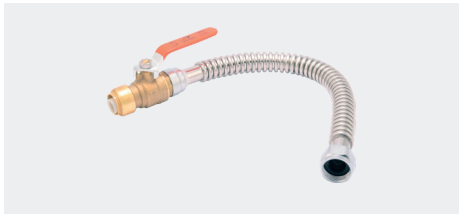
Stainless Steel Braided Water Heater Connector with Ball Valve



Part number	Description	Qty
U3068FLEX18BVL	1/2 in. x 3/4 in. FIP, 18 in.	12
U3088FLEX18BVL	3/4 in. x 3/4 in. FIP, 18 in.	12

SharkBite (1st Generation) Flexible Water Heater & Softener Connectors

Stainless Steel Corrugated Water Heater Connector with Ball Valve



Part number	Description	Qty
SS3068FLEX18BV	1/2 in. x 3/4 in. FIP, 18 in.	12
SS3088FLEX18BV	3/4 in. x 3/4 in. FIP, 18 in.	12

Stainless Steel Corrugated Water Heater Connector Kit



Kit contains one 3/4 in. FIP x 3/4 in. SharkBite x 18 in. hose, one 3/4 in. FIP x 3/4 in. SharkBite ball valve x 18 in. hose, and one 3/4 in. disconnect clip.

Part number	Description	Qty
24680	Kit	3

Stainless Steel Braided Water Coupling Hose



Part number	Description	Qty
U3008FLEX18LF	1/2 in. x 1/2 in., 18 in.	12
U3016FLEX18LF	3/4 in. x 3/4 in., 18 in.	12

Stainless Steel Braided Water Softener Connector



Part number	Description	Qty
U3086FLEX24LF	3/4 in. x 1 in. FIP, 24 in.	6

SharkBite (1st Generation) Stops & Fixture Supply Fittings

Wide range of supply stops for connecting fixtures and appliances. Used to control and shut off water flow for maintenance and repair. Compatible with PEX, copper, CPVC and PE-RT pipe and ideal for working in tight spaces.

Angle Stop



Part number	Description	Qty
23048-0000LF	1/2 in. x 1/4 in. (3/8 in. OD)	6
23336-0000LF	1/2 in. x 1/4 in. Compression	6
23036-0000LF	1/2 in. x 3/8 in. Compression	12
24731LF	1/2 in. x 3/8 in. Compression Loose Key	6
24946	1/2 in. x 1/2 in. MIP	6

Brushed Nickel Angle Stop



Part number	Description	Qty
23036LFBN	1/2 in. X 3/8 in. Compression	1

Straight Stop



Part number	Description	Qty
23049-0000LF	1/2 in. x 1/4 in. (3/8 in. OD)	6
23337-0000LF	1/2 in. x 1/4 in. Compression	6
23037-0000LF	1/2 in. x 3/8 in. Compression	12
24947	1/2 in. x 1/2 in. MIP	6

Tee Stop



Part number	Description	Qty
24983	1/2 in. x 1/2 in. x 1/4 in. Compression	6
24987	1/2 in. x 1/2 in. x 1/4 in. (3/8 in. OD)	6
24984	1/2 in. x 1/2 in. x 3/8 in. Compression	6
24985	3/4 in. x 3/4 in. x 1/4 in. Compression	6
24986	3/4 in. x 3/4 in. x 3/8 in. Compression	6

Dual Outlet Stop



Part number	Description	Qty
25558LF	1/2 in. Angle Stop x 3/8 in. x 3/8 in. OD Comp Dual Outlet Stop	6

Dual Shut Off Angle Stop



Part number	Description	Qty
SBDS123838	1/2 in. X 3/8 in. Compression X 3/8 in. Compression	1
SBDS123814	1/2 in. X 3/8 in. Compression X 1/4 in. Compression	1

SharkBite (1st Generation) Stops & Fixture Supply Fittings

Dual Tee Stop Valve Adapter



Insert onto stub-out then install any of the eight SharkBite stop valves to create any combination desired. CTS ends insert into any 1/2 in. SharkBite fitting. Recommended use with angle/straight stops.

Part number	Description	Qty
U782LF	1/2 in. CTS x 1/2 in. CTS x 1/2 in.	6

Stop Valve Connector



Part number	Description	Qty
U3523LF	1/4 in. (3/8 in. OD) x 3/8 in. Compression Stop Valve Connector (Converts 3/8 in. comp stop to SharkBite)	6
U3524LF	1/4 in. (3/8 in. OD) x 1/4 in. Compression Nut	6

Faucet Connector



Part number	Description	Qty
U3525LF	1/4 in. (3/8 in. OD) x 1/2 in. NPSM	6

Toilet Connector



Part number	Description	Qty
U3531LF	1/4 in. (3/8 in. OD) x 7/8 in. Ballcock Threads Toilet Connector	6

Angle Stop Supply Line



Part number	Description	Qty
24656	1/2 in. x 7/8 in. Ballcock Click Seal® Toilet Connector x 12 in.*	6
24657	1/2 in. x 1/2 in. NPSM Click Seal® Faucet Connector x 20 in.*	6

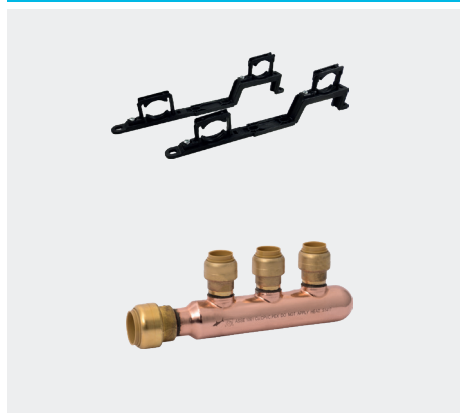
Straight Stop Supply Line



Part number	Description	Qty
24686	1/2 in. Straight Stop x 7/8 in. Ballcock Click Seal® Toilet Connector x 16 in.	1
24687	1/2 in. Straight Stop x 1/2 in. NPSM Click Seal® Faucet Connector x 30 in.	1

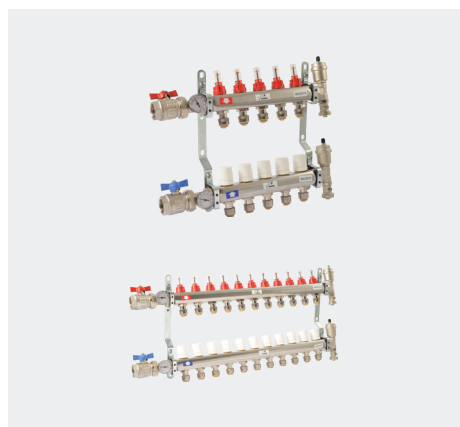
SharkBite (1st Generation) Additional Products

Manifolds with Push-to-Connect Branches



Part number	Description	Qty
25484Z	Manifold Bracket Set (for 1"-1-1/2" diameter manifolds)	1
25552LF	SharkBite 3/4" x 1/2" Outlet 3-Port Manifold - Open	3
25553LF	SharkBite 3/4" x 1/2" Outlet 3-Port Manifold - Closed	3
25554LF	SharkBite 3/4" x 1/2" Outlet 4-Port Manifold - Open	3
25555LF	SharkBite 3/4" x 1/2" Outlet 4-Port Manifold - Closed	3

Radiant Heating Manifold (1 in. FNPT x 1/2 in. SharkBite PEX loops)



Part number	Description	Qty
24930	3 Port	1
24931	4 Port	1
24932	5 Port	1
24933	6 Port	1
24934	7 Port	1
24935	8 Port	1
24936	9 Port	1
24937	10 Port	1
24938	11 Port	1
24939	12 Port	1
24940	13 Port	1

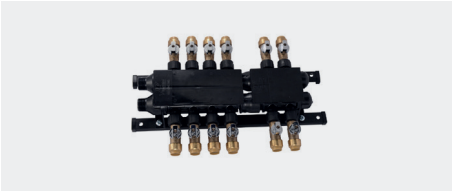
SharkBite Radiant Manifold Actuator



Part number	Description	Qty
24963	SharkBite Radiant Manifold Actuator	1

SharkBite (1st Generation) Additional Products

Push-to-Connect Home Run Manifold



Part number	Description	Qty
PM012SB	12 Port Manifold with Brass Push-to-Connect Valves - 3/4 in. Inlet - 1/2 in. Outlet	1
PM024SB	24 Port Manifold with Brass Push-to-Connect Valves - 3/4 in. Inlet - 1/2 in. Outlet	1

Water Hammer Arrestor



Provides continuous protection against water hammer. Can be positioned vertically or horizontally. Innovative push-to-connect design makes for quick and easy installation, even on wet pipe, and is ideal for working in tight spaces.

Part number	Description	Qty
22630LF	1/2 in. Residential	1
22631LF	1/2 in. Commercial	1
22632LF	3/4 in. Residential	1
22633LF	1 in. Commercial	1

Stub-out Elbow



The SharkBite stub-out elbows come with pre-fitted mounting brackets that provide four fixed installation positions on all wooden surfaces (studs, joists and subfloors) by simply rotating or repositioning the mounting bracket.

Part number	Description	Qty
U351LFA	1/2 in. SharkBite x 1/2 in. Copper Tube 8 in. Length	6

Pressure Gauge



Part number	Description	Qty
24436	1/2 in. SharkBite Tee with Pressure Gauge	1
24438	3/4 in. SharkBite Tee with Pressure Gauge	1
24438A	3/4 in. SharkBite Pressure Gauge in Retail Packaging	5
24440	1 in. SharkBite Tee with Pressure Gauge	1
24442	1/2 in. CTS Pressure Gauge (inserts into any 1/2 in. SB fitting)	1
24444	3/4 in. CTS Pressure Gauge (inserts into any 3/4 in. SB fitting)	1

Temperature Gauge



Part number	Description	Qty
24437	1/2 in. SharkBite Tee with Temperature Gauge	1
24439	3/4 in. SharkBite Tee with Temperature Gauge	1
24441	1 in. SharkBite Tee with Temperature Gauge	1
24443	1/2 in. CTS Temperature Gauge (inserts into any 1/2 in. SB fitting)	1
24445	3/4 in. CTS Temperature Gauge (inserts into any 3/4 in. SB fitting)	1

SharkBite (1st Generation) Kits

Tankless Water Heater Kit



Tankless water heater kit comes with 3/4 in. hot isolation valve, 3/4 in. cold isolation valve, 3/4 in. FWL-2 pressure only relief valve.

Part number	Description	Qty
25374	3/4 in. Hot Isolation Valve, 3/4 in. Cold Isolation Valve, 3/4 in. FWL-2 Pressure Only Relief Valve	1

Water Heater Installation Kit



Kits include two SharkBite connector fittings and a disconnect clip.

Part number	Description	Qty
22604LF	1/2 in. x 3/4 in. FNPT	12
22441LF	3/4 in. x 3/4 in. FNPT	12

Contractor Kit



Kits include toolbox.

Part number	Description	Qty
UR22486LF	Kit Contains 2 each (U008LF, U016LF, U058LF, U072LF, U088LF, U120LF, U134LF, U248LF, U256LF) and 1 each (U362LF, U370LF, U514LF, U518LF, U710, U711, U713 and U702)	1
U3001A	Contractor Tool Box Only	1

Faucet Connection Kit in Bagged Packaging



Faucet kits come with two faucet connectors, two angle stops and one coil of 10' 1/4 in. white PEX pipe.

Part number	Description	Qty
25087	Faucet Connector with Angle Stop	3
25538	Faucet Connector with Straight Stop	3

Toilet Connection Kit in Bagged Packaging



Toilet kits come with one toilet connector, one angle stop and one coil of 5' 1/4 in. white PEX pipe.

Part number	Description	Qty
25088	Toilet Connector with Angle Stop	6
25539	Toilet Connector with Straight Stop	3

SharkBite (1st Generation) Kits

Ice Maker Connection Kit in Bagged Packaging



Ice maker kits come with one service slip tee, one angle stop, one valve connector and 10' 1/4 in. white PEX pipe.

Part number	Description	Qty
25024	Ice Maker Connector with Angle Stop	1

Dishwasher Installation Kit in Bagged Packaging



Dishwasher kit comes with one dual outlet stop, one stop valve connector, one dishwasher elbow and one garden hose nut.

Part number	Description	Qty
25568	Dishwasher Installation Kit	3

Shower/Tub Installation Kit in Bagged Packaging



Shower/tub kit contains two drop ear elbows, two female connectors, two female elbows and one disconnect clip.

Part number	Description	Qty
25567	Shower/Tub Installation Kit	3

Water Filter Installation Kit in Bagged Packaging



Water filter kit comes with one slip coupling, one male connector and one disconnect clip.

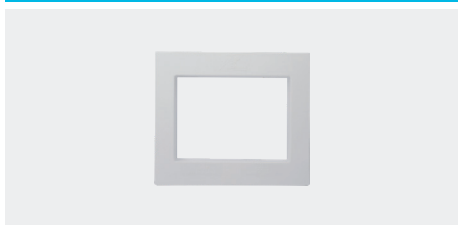
Part number	Description	Qty
25561	Kit contains: (1) 3/4 in. Slip Connector, (1) 3/4 in. Male Connector and (1) 3/4 in. Disconnect Clip	6
25562	Kit contains: (1) 1 in. Slip Connector, (1) 1 in. Male Connector and (1) 1 in. Disconnect Clip	6

Washing Machine Outlet Box



Part number	Description	Qty
25098	1/2 in. SB x 3/4 in. MHT	1
25099	1/2 in. SB x 3/4 in. MHT with Water Hammer Arrestor	1

Faceplate Replacement



Part number	Description	Qty
25478	Ice Maker Box Replacement Faceplate for 25032, 25033, 25096, 25097	1
25464	Washing Machine Box Replacement Faceplate for 24763, 25031, 25098, 25099	1

Washing Machine Valve



Part number	Description	Qty
25559LF	1/2 in. x 3/4 in. MHT Straight Valve	6
25560LF	1/2 in. x 3/4 in. MHT Angle Valve	6

SharkBite (1st Generation) Tools and Accessories

Deburr & Gauge Tool



Part number	Description	Qty
U702	Use for 1/4 in., 3/8 in., 1/2 in., 5/8 in., 3/4 in. and 1 in. Copper and CPVC Pipe	1
UXLG03	Use for 1-1/4 in., 1-1/2 in., 2 in.	1

Disconnect Clip



Part number	Description	Qty
U706	1/4 in.	12
U708	3/8 in.	24
U710	1/2 in.	24
U712	3/4 in.	24
U714	1 in.	12

SharkBite (1st Generation) Tools and Accessories

Disconnect Tools



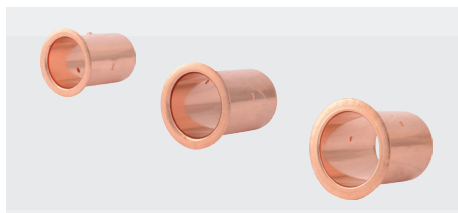
Part number	Description	Qty
U711	1/2 in. Tongs	1
U713	3/4 in. Tongs	1
U715	1 in. Tongs	1
PROD3810	3/8 in. – 1 in. Pro Disconnect Tool	1

Disconnect Clip



Part number	Description	Qty
UXLDC35	1-1/4 in.	1
UXLDC41	1-1/2 in.	1
UXLDC54	2 in.	1

Large Diameter PEX Stiffener



Part number	Description	Qty
SBTL35	1-1/4 in.	1
SBTL41	1-1/2 in.	1
SBTL54	2 in.	1

Wrap for Fitting Burial



Part number	Description	Qty
25406	10' x 2 in. x 0.02 in. Silicone Wrap	1

PEX Pipe Cutter



Part number	Description	Qty
U701	PEX Pipe Cutter	1
25880	Pro PEX Cutter 1/4 in. – 1 in.	1
23369	Radial PEX cutter 1/2 in. – 1 in.	1
25882	Replacement Blades	2



SharkBite (1st Generation) Ball Valves

Ball Valve



Part number	Description	Qty
22222-0000LF	1/2 in. x 1/2 in.	12
22185-0000LF	3/4 in. x 3/4 in.	12
22223-0000LF	1 in. x 1 in.	6
UXLBV35	1-1/4 in. x 1-1/4 in. *	1
UXLBV41	1-1/2 in. x 1-1/2 in. *	1
UXLBV54	2 in. x 2 in. *	1

*For PEX applications, stiffeners are sold separately.

Ball Valve with FNPT Connector



Part number	Description	Qty
22182-0000LF	1/2 in. x 1/2 in. FNPT	6
22186-0000LF	3/4 in. x 3/4 in. FNPT	6
22187-0000LF	1 in. x 1 in. FNPT	3

Ball Valve with Drain/Vent

Part number	Description	Qty
24377	1/8 in. NPSM Replacement Drain Cap	1

Ball Valve with Drain/Vent and Mounting Bracket



Part number	Description	Qty
24615-0000LF	1/2 in. x 1/2 in. x 1/8 in. NPSM Drain Thread	12
24616-0000LF	3/4 in. x 3/4 in. x 1/8 in. NPSM Drain Thread	6
24617-0000LF	1 in. x 1 1/8 in. NPSM Drain Thread	6
24377	1/8 in. NPSM Replacement Drain Cap	1

Slip Ball Valve (Slip end only suitable for copper and CPVC)



Part number	Description	Qty
24735LF	1/2 in. x 1/2 in.	6
24736LF	3/4 in. x 3/4 in.	6
24737LF	1 in. x 1 in.	3

Reducing Ball Valve



Part number	Description	Qty
22973LF	3/4 in. x 1/2 in.	6
22993LF	1 in. x 3/4 in.	3

PVC Ball Valve



Part number	Description	Qty
25550LF	3/4 in. PVC x 3/4 in. CTS	6
25551LF	1 in. PVC x 3/4 in. CTS	6

Check Valves

Check Valve



Used to prevent the reverse flow of water.

Part number	Description	Qty
U2008-0000LF	1/2 in. x 1/2 in.	6
U2016-0000LF	3/4 in. x 3/4 in.	6
U2020-0000LF	1 in. x 1 in.	3

Dual Check Valve



Part number	Description	Qty
BF13434SB	3/4 in. x 3/4 in.	1
BF10101SB	1 in. x 1 in.	1
BF5M0134SB	1 in. x 3/4 in.	1
BF5M1401SB	1-1/4 in. x 1 in.	1

ASSE 1024 & CSA B64.6

Outdoor Hose Valves

Stop Valve with Drain



Part number	Description	Qty
24634LF	1/2 in. x 1/2 in.	12
24635LF	3/4 in. x 3/4 in.	12
24377	1/8 in. NPSM Replacement Drain Cap	1

Stop Valve Repair Kit



Part number	Description	Qty
25757	Stop Valve Repair Kit	1
24377	1/8 in. NPSM Replacement Drain Cap	1

Outdoor Hose Valves

Hose Bibbs



Part number	Description	Qty
24620LF	1/2 in. x 3/4 in. MHT 90° – Quarter-Turn	6
24621LF	3/4 in. x 3/4 in. MHT 90° – Quarter-Turn	6
24626LF	1/2 in. x 3/4 in. MHT 90° – Multi-Turn	6
24627LF	3/4 in. x 3/4 in. MHT 90° – Multi-Turn	6
24630LF	1/2 in. x 3/4 in. MHT No-Kink 45° – Quarter-Turn	6
24631LF	3/4 in. x 3/4 in. MHT No-Kink 45° – Quarter-Turn	6
24632LF	1/2 in. x 3/4 in. MHT No-Kink 45° – Multi-Turn	6
24633LF	3/4 in. x 3/4 in. MHT No-Kink 45° – Multi-Turn	6

Hose Bibb Repair Kits



Part number	Description	Qty
25756	O-ring Repair Set for Multi Turn Hose Bibbs	1

Garden Valves



Part number	Description	Qty
24622LF	1/2 in. x 3/4 in. MHT	6
24623LF	3/4 in. x 3/4 in. MHT	6

Garden Valve Repair Kit



Part number	Description	Qty
25758	Garden Valve Repair Kit	1

Anti-Siphon Frost-Free Sillcock



Part number	Description	Qty
25743LF	1/2 in. x 3/4 in. MHT 4 in.	4
25744LF	1/2 in. x 3/4 in. MHT 6 in.	4
24628LF	1/2 in. x 3/4 in. MHT 8 in.	4
24629LF	1/2 in. x 3/4 in. MHT 10 in.	4
24636LF	1/2 in. x 3/4 in. MHT 12 in.	4
24637LF	1/2 in. x 3/4 in. MHT 15 in.	4
24638LF	1/2 in. x 3/4 in. MHT 18 in.	4

Anti-Siphon Frost-Free Sillcock Repair Kit



Part number	Description	Qty
25759	Vacuum Breaker Repair Kit	1
25773	4 in. Steam Repair Kit	1
25774	6 in. Steam Repair Kit	1
25751	8 in. Steam Repair Kit	1
25752	10 in. Steam Repair Kit	1
25753	12 in. Steam Repair Kit	1
25754	15 in. Steam Repair Kit	1
25755	18 in. Steam Repair Kit	1

Pressure Regulating Valves

EB45 Lead Free SharkBite Connection



Part number	Description	Qty
23807-0045	1/2 in. EB45-DSB Direct SharkBite	1
24383-0045	1/2 in. EB45-SDSB Slip Feature Direct SharkBite	1
23893-0045	1/2 in. EB45-DUSB Double Union SharkBite	1
24476-0045	1/2 in. EB45-DUSB Double Union SharkBite with Metal Top	1
23808-0045	3/4 in. EB45-DSB Direct SharkBite	1
24384-0045	3/4 in. EB45-SDSB Slip Feature Direct SharkBite	1
23894-0045	3/4 in. EB45-DUSB Double Union SharkBite	1
23896-0060	3/4 in. EB45 Double Union SharkBite (60 psi setting)	1
24449-0045	3/4 in. EB45-DUSB Double Union SharkBite with Gauge	1
24477-0045	3/4 in. EB45-DUSB Double Union SharkBite with Metal Top	1
22675-0045	1 in. EB45-DSB Direct SharkBite	1
23358-0045	1 in. EB45-DUSB Double Union SharkBite	1
23945-0060	1 in. EB45-DUSB Double Union SharkBite (60 psi setting)	1
25847-0045	1-1/4 in. EB45 Double Union SharkBite	1
25848-0045	1-1/2 in. EB45 Double Union SharkBite	1
25849-0045	2 in. EB45 Double Union SharkBite	1

All EB45 valves factory set at 45 psi unless specified.

Pressure Regulating Valves

EB25 Lead Free SharkBite Connection



Part number	Description	Qty
23955-0045	3/4 in. EB25-DUSB Double Union SharkBite	1
23956-0045	1 in. EB25-DUSB Double Union SharkBite	1
25844-0045	1-1/4 in. EB25 Double Union SharkBite	1
25845-0045	1-1/2 in. EB25 Double Union SharkBite	1
25846-0045	2 in. EB25 Double Union SharkBite	1

A-89 Boiler Feed Valve



Part number	Description	Qty
25521Z	1/2 in. A-89 Direct SharkBite	1

Thermostatic Mixing Valves

HG110-D Lead Free



Part number	Description	Qty
24548	1/2 in. HG110-D with Integrated SharkBite Connections and Integral Checks	1
24549	3/4 in. HG110-D with Integrated SharkBite Connections and Integral Checks	1
24504	1/2 in. HG110-D with SharkBite Union Connections	1
24505	3/4 in. HG110-D with SharkBite Union Connections	1

ASSE 1017, 1069 & 1070, CSA B 125.3. Distribution and in-line.

HG160 Lead Free



Part number	Description	Qty
24529	1/2 in. HG160 with SharkBite Connections	1
24530	3/4 in. HG160 with SharkBite Connections	1

ASSE 1017, 1069 & 1070, CSA B 125.3. Distribution and in-line.

HG110-HX



Part number	Description	Qty
24867	3/4 in. HG110-HX with SharkBite Connections and Integral Checks	1

Thermal Expansion Relief Valve

Thermal Expansion Relief Valve



Part number	Description	Qty
25704LF	3/4 in. x 3/4 in. x 1/2 in. Outlet	1

Not available in Canada.

Temperature & Pressure Relief Valves

Provides temperature and pressure protection for residential water heaters and storage tanks. Push-to-connect design allows for quick and easy installation on copper and CPVC drain lines. Comes with standard factory settings of 150 psi for pressure and 210°F (99°C) for temperature relief. Completely automatic and reseats after temperature or pressure relief.

Temperature & Pressure Relief Valve



Part number	Description	Qty
24609-0150	3/4 in. NCLX-5LX with SharkBite Outlet Connection	1



EvoPEX Fittings

Designed for new construction and larger renovation projects, SharkBite EvoPEX push-to-connect fittings and SharkBite PEX pipe deliver the ability to plumb an entire potable water system without the need for special tools. This revolutionary system provides a faster, safer and more reliable installation for long-term use and satisfaction. It extends beyond the traditional pipe and fittings solutions to include fittings, PEX pipe, valves, supply stops and other accessories.

Stay on schedule

No special tools, crimping, glue or solder needed to plumb an entire home, optimizing install time and efficiency. Fittings can be securely rotated after installation for quick alignment.

Mitigate risk

The system's ease of installation reduces the chance of install errors, which minimizes potential leaks. A green visual indicator provides assurance that a secure and permanent connection has been made.

For use on SharkBite PEX pipe only. Not compatible with Copper, CPVC, or HDPE pipe.

EvoPEX fittings and accessories are third party certified and in compliance with national and local plumbing codes, including the Uniform Plumbing Code (UPC), International Plumbing Code (IPC), and the National Plumbing Code of Canada. Check your local jurisdiction for compliance in your area.

For the most current certifications, please visit sharkbite.com.



EvoPEX Fittings

Coupling



Part number	Description	Bag qty	Minimum order qty
K008WP3	1/2 in. x 1/2 in. Coupling (3-Pack)	3	1
K016WP3	3/4 in. x 3/4 in. Coupling" (3-Pack)	3	1
K020WP2	1 in. x 1 in. Coupling (2-Pack)	2	1

For use on SharkBite PEX pipe only.

Reducing Coupling



Part number	Description	Bag qty	Minimum order qty
K058WP3	3/4 in. X 1/2 in. Reducing coupling (3-Pack)	3	1
K060WP2	1 in. X 3/4 in. Reducing coupling (2-Pack)	2	1

For use on SharkBite PEX pipe only.

Female Adapter



Part number	Description	Bag qty	Minimum order qty
K072WP3	1/2 in. EvoPEX x FNPT adapter (3-Pack)	3	1
K088WP3	3/4 in. EvoPEX x FNPT adapter (3-Pack)	3	1
K094WP2	1 in. EvoPEX x FNPT adapter (2-Pack)	2	1

For use on SharkBite PEX pipe only.

Male Adapter



Part number	Description	Bag qty	Minimum order qty
K120WP3	1/2 in. EvoPEX x 1/2 in. MNPT adapter (3-Pack)	3	1
K134WP3	3/4 in. EvoPEX x 3/4 in. MNPT adapter (3-Pack)	3	1
K140WP2	1 in. EvoPEX x 1 in. MNPT adapter (2-Pack)	2	1

For use on SharkBite PEX pipe only.

Elbow



Part number	Description	Bag qty	Minimum order qty
K248WP6	1/2 in. x 1/2 in. Elbow (6-Pack)	6	1
K256WP6	3/4 in. x 3/4 in. Elbow (6-Pack)	6	1
K260WP2	1 in. x 1 in. Elbow (2-Pack)	2	1

For use on SharkBite PEX pipe only.

Reducing Elbow



Part number	Description	Bag qty	Minimum order qty
K274WP3	1/2 in. x 3/4 in. Reducing Elbow (3-Pack)	3	1
K277WP2	1 in. x 1/2 in. Reducing Elbow (2-Pack)	2	1

For use on SharkBite PEX pipe only.

Male Elbow



Part number	Description	Bag qty	Minimum order qty
K280WP2	1/2 in. EvoPEX x 1/2 in. MNPT Adapter Elbow (2-Pack)	2	1

For use on SharkBite PEX pipe only.

Female Elbow



Part number	Description	Bag qty	Minimum order qty
K308WP2	1/2 in. EvoPEX x 1/2 in. FNPT Adapter Elbow (2-Pack)	2	1

For use on SharkBite PEX pipe only.

Drop-Ear Elbow



Part number	Description	Bag qty	Minimum order qty
K334WP3	1/2 in. EvoPEX x 1/2 in. FNPT Drop Ear Elbow (3-Pack)	3	1
K340WP2	3/4 in. EvoPEX x 3/4 in. FNPT Drop Ear Elbow (2-Pack)	2	1

For use on SharkBite PEX pipe only.

Tee



Part number	Description	Bag qty	Minimum order qty
K362WP3	1/2 in. x 1/2 in. x 1/2 in. Tee (3-Pack)	3	1
K370WP3	3/4 in. x 3/4 in. x 3/4 in. Tee (3-Pack)	3	1
K374WP2	1 in. x 1 in. x 1 in. Tee (2-Pack)	2	1

For use on SharkBite PEX pipe only.

Reducing Street Tee



Part number	Description	Bag qty	Minimum order qty
K4483WP3	3/4 in. X 3/4 in. X 1/2 in. Reducing Street Tee (3-Pack)	3	1
K4485WP2	1 in. x 1 in. X 1/2 in. Reducing Street Tee (2-Pack)	2	1

The Maximum number of street tees joined together is based on sizing requirements from the local plumbing code.

When joining more than two reducing street tees together, use a support on every other tee. RWC recommends HoldRite part number 233/234 or for acoustical requirements, HoldRite part number 255/257." This is in the PSIG and should include the picture to the side.

EvoPEX Fittings

Reducing Tee



Part number	Description	Bag qty	Minimum order qty
K408WP3	1/2 in. X 1/2 in. X 3/4 in. Reducing Tee (3-Pack)	3	1
K412WP3	3/4 in. X 3/4 in. X 1/2 in. Reducing Tee (3-Pack)	3	1
K413WP2	3/4 in. X 3/4 in. X 1 in. Reducing Tee (2-Pack)	2	1
K414WP2	1 in. X 3/4 in. X 3/4 in. Reducing Tee (2-Pack)	2	1
K415WP2	1 in. X 1 in. X 1/2 in. Reducing Tee (2-Pack)	2	1
K416WP2	1 in. X 1 in. X 3/4 in. Reducing Tee (2-Pack)	2	1
K418WP2	1 in. X 3/4 in. X 1 in. Reducing Tee (2-Pack)	2	1
K419WP2	1 in. X 3/4 in. X 1/2 in. Reducing Tee (2-Pack)	2	1
K444WP3	3/4 in. X 1/2 in. 3/4 in. Reducing Tee (3-Pack)	3	1
K454WP3	3/4 in. X 1/2 in. X 1/2 in. Reducing Tee (3-Pack)	3	1

For use on SharkBite PEX pipe only.

End Cap



Part number	Description	Bag qty	Minimum order qty
K514WP6	1/2 in. Cap (6-Pack)	6	1
K518WP6	3/4 in. Cap (6-Pack)	6	1
K520WP2	1 in. Cap (2-Pack)	2	1

For use on SharkBite PEX pipe only.

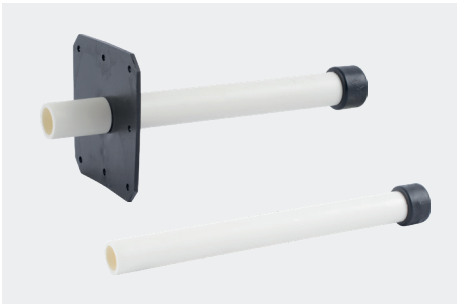
PEX Stub-out Kit



Part number	Description	Bag qty	Minimum order qty
K25578WP12	1/2 in. x 6 in. PEX Stub Out with Bracket and EvoPEX 1/2" 90	12	1
K25581WP12	1/2 in. x 6 in. PEX Stub Out with EvoPEX 1/2" 90	12	1
K25721WP12	1/2 in. x 10 in. PEX Stub Out w/ Bracket, Cap and EvoPEX 1/2" 90 (12-Pack)	12	1
K25722WP12	1/2 in. x 10 in. PEX Stub Out with Cap and EvoPEX 1/2" 90 (12-Pack)	12	1

For use on SharkBite PEX pipe only.

PEX Stub-out



Part number	Description	Bag qty	Minimum order qty
K24649WP	1/2 in. x 6 in. PEX Stub Out with Bracket	25	25
K24650WP	1/2 in. x 6 in. PEX Stub Out	25	25
K25721WP	1/2 in. x 10 in. PEX Stub Out w/ Bracket and Cap	25	25
K25722WP	1/2 in. x 10 in. PEX Stub Out with Cap	25	25
K25723WP	1/2 in. x 20 in. PEX Stub Out w/ Bracket and Cap	25	25

For use on SharkBite PEX pipe only.

Copper Stub-out



Part number	Description	Bag qty	Minimum order qty
K25811	1/2 in. x 6 in. with Bracket & EvoPEX Elbow	12	12
K25813	1/2 in. x 6 in. with EvoPEX Elbow	12	12
K25815	1/2 in. x 8 in. with Bracket & EvoPEX Elbow	12	12
K25817	1/2 in. x 8 in. with EvoPEX Elbow	12	12

For use on SharkBite PEX pipe only.

Supply Stops

Angle Stop



Part number	Description	Bag qty	Minimum order qty
K23036	1/2 in. X 3/8 in. OD Compression Angle Stop with Escutcheon	1	12

For use on SharkBite PEX pipe only.

Straight Stop



Part number	Description	Bag qty	Minimum order qty
K23037	1/2 in. X 3/8 in. OD Compression Straight Stop with Escutcheon	1	12

For use on SharkBite PEX pipe only.

Ball Valves

Ball Valve



Part number	Description	Bag qty	Minimum order qty
K22222	1/2 in. x 1/2 in. Ball Valve	1	12
K22185	3/4 in. x 3/4 in. Ball Valve	1	12
K22223	1 in. x 1 in. Ball Valve	1	6

For use on SharkBite PEX pipe only.

Tools

EvoPEX Chamfer Tool



Part number	Description	Bag qty	Minimum order qty
25829	1 in. x 3/4 in. x 1/2 in.	1	1

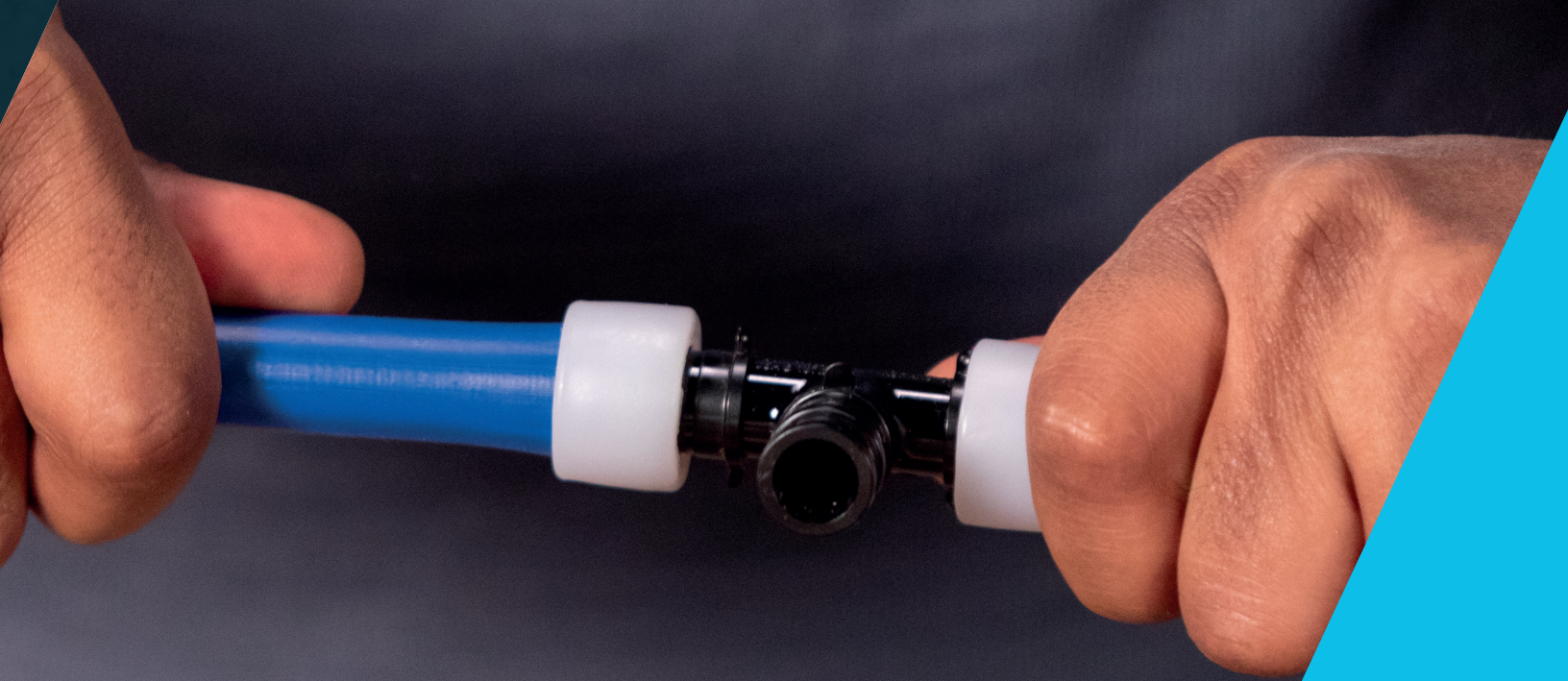


PEX-a F1960 Expansion Fittings

SharkBite offers a wide range of polymer and brass expansion fittings that are third-party tested and certified to ASTM F1960. SharkBite expansion fittings are made from highly engineered polymer materials or dezincification resistant brass complying with NSF 14 designed to resist corrosion. They also offer the peace of mind of being backed by a 25-year system warranty when installed with SharkBite PEX-a pipe.

PEX F1960 Expansion fittings and accessories are third party certified and in compliance with national and local plumbing codes, including the Uniform Plumbing Code (UPC), International Plumbing Code (IPC), and the National Plumbing Code of Canada. Check your local jurisdiction for compliance in your area.

For the most current certifications, please visit sharkbite.com.



PEX-a F1960 Poly Fittings

Couplings Bulk-Packaged



Part number	Description	Qty
UA008	1/2 in. x 1/2 in. Coupling	25
UA016	3/4 in. x 3/4 in. Coupling	25
UA020	1 in. x 1 in. Coupling	25
UA0135	1-1/4 in. x 1-1/4 in. Coupling	20
UA0141	1-1/2 in. x 1-1/2 in. Coupling	20
UA0154	2 in. x 2 in. Coupling	15
UA058	3/4 in. x 1/2 in. Reducing Coupling	25
UA060	1 in. x 3/4 in. Reducing Coupling	25
UA013522	1-1/4 in. x 3/4 in. Reducing Coupling	20
UA013528	1-1/4 in. x 1 in. Reducing Coupling	20
UA014122	1-1/2 in. x 3/4 in. Reducing Coupling	20
UA014128	1-1/2 in. x 1 in. Reducing Coupling	20
UA014135	1-1/2 in. x 1-1/4 in. Reducing Coupling	20
UA015441	2 in. x 1-1/2 in. Reducing Coupling	15

Elbows Bulk-Packaged



Part number	Description	Qty
UA248	1/2 in. x 1/2 in. 90° Elbow	25
UA256	3/4 in. x 3/4 in. 90° Elbow	25
UA260	1 in. x 1 in. 90° Elbow	10
UA0235	1-1/4 in. x 1-1/4 in. 90° Elbow	10
UA0241	1-1/2 in. x 1-1/2 in. 90° Elbow	10
UA0254	2 in. x 2 in. 90° Elbow	10
UA0541	1-1/2 in. x 1-1/2 in. 45° Elbow	
UA0554	2 in. x 2 in. 45° Elbow	

Plugs Bulk-Packaged



Part number	Description	Qty
UA514	1/2 in. Plug	25
UA518	3/4 in. Plug	25
UA520	1 in. Plug	10
UA0435	1-1/4 in. Plug	40
UA0441	1-1/2 in. Plug	30
UA0454	2 in. Plug	20

Tees Bulk-Packaged



Part number	Description	Qty
UA362	1/2 in. x 1/2 in. x 1/2 in. Tee	25
UA370	3/4 in. x 3/4 in. x 3/4 in. Tee	25
UA374	1 in. x 1 in. x 1 in. Tee	10
UA0835	1-1/4 in. x 1-1/4 in. x 1-1/4 in. Tee	10
UA0841	1-1/2 in. x 1-1/2 in. x 1-1/2 in. Tee	5
UA0854	2 in. x 2 in. x 2 in. Tee	5

Reducing Tees Bulk-Packaged



Part number	Description	Qty
UA408	1/2 in. X 1/2 in. X 3/4 in. Reducing Tee	25
UA412	3/4 in. X 3/4 in. X 1/2 in. Reducing Tee	25
UA444	3/4 in. X 1/2 in. X 3/4 in. Reducing Tee	25
UA454	3/4 in. X 1/2 in. X 1/2 in. Reducing Tee	25
UA413	3/4 in. X 3/4 in. X 1 in. Reducing Tee	10
UA414	1 in. X 3/4 in. X 3/4 in. Reducing Tee	10
UA418	1 in. x 3/4 in. x 1 in. Reducing Tee	10
UA415	1 in. x 1 in. x 1/2 in. Reducing Tee	10
UA416	1 in. x 1 in. x 3/4 in. Reducing Tee	10
UA08282835	1 in. X 1 in. X 1-1/4 in. Reducing Tee	
UA08412222	1-1/2 in. X 3/4 in. X 3/4 in. Reducing Tee	
UA08412241	1-1/2 in. X 3/4 in. X 1-1/2 in. Reducing Tee	
UA08412822	1-1/2 in. X 1 in. X 3/4 in. Reducing Tee	5
UA08412828	1-1/2 in. X 1 in. Reducing Tee	5
UA08412841	1-1/2 in. X 1 in. X 1-1/2 in. Reducing Tee	5
UA08413522	1-1/2 in. X 1-1/4 in. X 3/4 in. Reducing Tee	5
UA08413528	1-1/2 in. X 1-1/4 in. X 1 in. Reducing Tee	5
UA08413535	1-1/2 in. X 1-1/4 in. X 1-1/4 in. Reducing Tee	5
UA08414122	1-1/2 in. X 1-1/2 in. X 3/4 in. Reducing Tee	5
UA08414128	1-1/2 in. X 1-1/2 in. X 1 in. Reducing Tee	5
UA08414135	1-1/2 in. X 1-1/2 in. X 1-1/4 in. Reducing Tee	5
UA08352228	1-1/4 in. X 3/4 in. X 1 in. Reducing Tee	
UA08352235	1-1/4 in. X 3/4 in. X 1-1/4 in. Reducing Tee	
UA08352822	1-1/4 in. X 1 in. X 3/4 in. Reducing Tee	10
UA08352828	1-1/4 in. X 1 in. X 1 in. Reducing Tee	10
UA08353522	1-1/4 in. X 1-1/4 in. X 3/4 in. Reducing Tee	10
UA08353528	1-1/4 in. X 1-1/4 in. X 1 in. Reducing Tee	10
UA08542828	2 in. X 1 in. X 1 in. Reducing Tee	
UA08544122	2 in. X 1-1/2 in. X 3/4 in. Reducing Tee	5
UA08544128	2 in. X 1-1/2 in. X 1 in. Reducing Tee	5
UA08544135	2 in. X 1-1/2 in. X 1-1/4 in. Reducing Tee	5
UA08544141	2 in. X 1-1/2 in. X 1-1/2 in. Reducing Tee	5
UA08544154	2 in. X 1-1/2 in. X 2 in. Reducing Tee	5
UA08545422	2 in. X 2 in. X 3/4 in. Reducing Tee	5
UA08545428	2 in. X 2 in. X 1 in. Reducing Tee	5
UA08545435	2 in. X 2 in. X 1-1/4 in. Reducing Tee	5
UA08545441	2 in. X 2 in. X 1-1/2 in. Reducing Tee	5

PEX-a F1960 Poly Fittings

Open Multi-Port Tees



Part number	Port Amount	Size	Qty
UAMPT2OW	2-Port	Open Tee - 3/4 in. Inlet - 1/2 in. Outlet	10
UAMPT3OW	3-Port	Open Tee - 3/4 in. Inlet - 1/2 in. Outlet	10
UAMPT28223OW	3-Port	Open Tee - 3/4 in. x 1 in. Inlet - 1/2 in. Outlet	5
UAMPT4OW	4-Port	Open Tee - 3/4 in. Inlet - 1/2 in. Outlet	10
UAMPT4OW	4-Port	Open Opposing Tee - 3/4 in. Inlet - 1/2 in. Outlet	10
UAMPT28224OW	4-Port	Open Tee - 3/4 in. x 1 in. Inlet - 1/2 in. Outlet	5
UAMPT284OW	4-Port	Open Tee - 1 in. Inlet - 1/2 in. Outlet	5
UAMPT6OW	6-Port	Open Tee - 3/4 in. Inlet - 1/2 in. Outlet	10
UAMPT28226OW	6-Port	Open Tee - 3/4 in. x 1 in. Inlet - 1/2 in. Outlet	5
UAMPT286OW	6-Port	Open Tee - 1 in. Inlet - 1/2 in. Outlet	5

Closed Multi-Port Tees



Part number	Port Amount	Size	Qty
UAMPT3CW	3-Port	Closed Tee - 3/4 in. Inlet - 1/2 in. Outlet	10
UAMPT4CW	4-Port	Closed Tee - 3/4 in. Inlet - 1/2 in. Outlet	10
UAMPT4CHW	4-Port	Closed Opposing Tee - 3/4 in. Inlet - 1/2 in. Outlet	10
UAMPT284CW	4-Port	Closed Tee - 1 in. Inlet - 1/2 in. Outlet	5
UAMPT6CW	6-Port	Closed Tee - 3/4 in. Inlet - 1/2 in. Outlet	10
UAMPT286CW	6-Port	Closed Tee - 1 in. Inlet - 1/2 in. Outlet	5
UAMPT8SCW	8-Port	Closed Tee - 3/4 in. Inlet - 1/2 in. Outlet with mounting clips	5
UAMPT288SCW	8-Port	Closed Tee - 1 in. Inlet - 1/2 in. Outlet with mounting clips	5

PEX-a F1960 Brass Fittings

Sweat Female Adapters



Part number	Description	Qty
UAB600LF	1/2 in. X 1/2 in. Female Sweat Adapter	25
UAB681LF	1/2 in. X 3/4 in. Female Sweat Adapter	25
UAB683LF	3/4 in. X 1/2 in. Female Sweat Adapter	25
UAB606LF	3/4 in. X 3/4 in. Female Sweat Adapter	25
UAB685LF	3/4 in. X 1 in. Female Sweat Adapter	25
UAB605LF	1 in. X 1 in. Female Sweat Adapter	15
UAB143535F	1-1/4 in. X 1-1/4 in. Female Sweat Adapter	10
UAB144141F	1-1/2 in. X 1-1/2 in. Female Sweat Adapter	10
UAB145454F	2 in. X 2 in. Female Sweat Adapter	5

PEX-a F1960 Brass Fittings

Sweat Male Adapters



Part number	Description	Qty
UAB607LF	1/2 in. X 1/2 in. Male Sweat Adapter	25
UAB682LF	1/2 in. X 3/4 in. Male Sweat Adapter	25
UAB684LF	3/4 in. X 1/2 in. Male Sweat Adapter	25
UAB608LF	3/4 in. X 3/4 in. Male Sweat Adapter	25
UAB686LF	3/4 in. X 1 in. Male Sweat Adapter	25
UAB609LF	1 in. X 1 in. Male Sweat Adapter	25
UAB143535M	1-1/4 in. X 1-1/4 in. Male Sweat Adapter	10
UAB144141M	1-1/2 in. X 1-1/2 in. Male Sweat Adapter	10
UAB145454M	2 in. X 2 in. Male Sweat Adapter	5

Drop-Ear Elbow



Part number	Description	Qty
UAB334LF	1/2 in. X 1/2 in. FNPT Drop-Ear Elbow	25
UAB340LF	3/4 in. X 3/4 in. FNPT Drop-Ear Elbow	15

Adapter Elbow



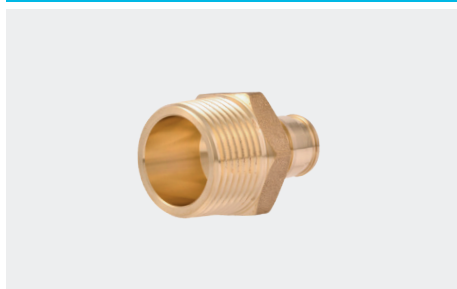
Part number	Description	Qty
UAB280LF	1/2 in. X 1/2 in. MNPT Adapter Elbow	25

Female Adapters



Part number	Description	Qty
UAB072LF	1/2 in. X 1/2 in. FNPT	25
UAB068LF	1/2 in. X 3/4 in. FNPT	25
UAB088LF	3/4 in. X 3/4 in. FNPT	25
UAB086LF	3/4 in. X 1 in. FNPT	25
UAB094LF	1 in. X 1 in. FNPT	10
UAB113532F	1-1/4 in. X 1-1/4 in. FNPT	10
UAB114140F	1-1/2 in. X 1-1/2 in. FNPT	10
UAB115450F	2 in. X 2 in. FNPT	5

Male Adapters



Part number	Description	Qty
UAB120LF	1/2 in. X 1/2 in. MNPT	25
UAB116LF	1/2 in. X 3/4 in. MNPT	25
UAB134LF	3/4 in. X 3/4 in. MNPT	25
UAB139LF	3/4 in. X 1 in. MNPT	10
UAB142LF	1 in. X 3/4 in. MNPT	10
UAB140LF	1 in. X 1 in. FNPT	10
UAB113532M	1-1/4 in. X 1-1/4 in. FNPT	10
UAB114140M	1-1/2 in. X 1-1/2 in. FNPT	10
UAB115450M	2 in. X 2 in. FNPT	5

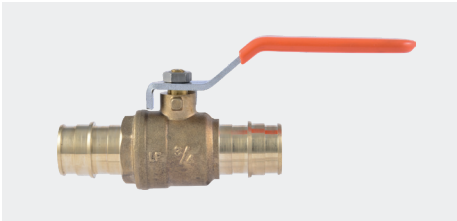
PEX-a F1960 Valves

Stop Valves Quarter-Turn Bulk Packaged



Part number	Description	Qty
UAB23058LFA	1/2 in. x 3/8 in. OD Compression Straight Stop Valve	24
UAB23057LFA	1/2 in. x 3/8 in. OD Compression Angle Stop Valve	24

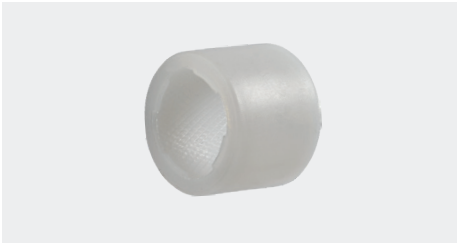
Ball Valves Bulk Packaged



Part number	Description	Qty
UAB22461LFA	1/2 in. X 1/2 in. Ball Valve (full port) Lead Free	12
UAB22462LFA	3/4 in. X 3/4 in. Ball Valve (full port) Lead Free	12
UAB22463LFA	1 in. X 1 in. Ball Valve (full port) Lead Free	6
UABBV35	1-1/4 in. X 1-1/4 in. Ball Valve (full port) Lead Free	24
UABBV41	1-1/2 in. X 1-1/2 in. Ball Valve (full port) Lead Free	16
UABBV54	2 in. X 2 in. Ball Valve (full port) Lead Free	12

PEX-a F1960 Rings

F1960 Expansion Ring Bulk Packaged (Poly)



Part number	Description	Qty
UA23102	1/2 in. Expansion Ring with Stop	50
UA23103	3/4 in. Expansion Ring with Stop	50
UA23104	1 in. Expansion Ring with Stop	50
UA24676	1-1/4 in. Expansion Ring with Stop	10
UA24677	1-1/2 in. Expansion Ring with Stop	10
UA24678	2 in. Expansion Ring with Stop	10

Additional Products

Stub Outs Bulk Packaged (Copper)



Part number	Description	Qty
UAB26061LF	1/2 in. (3 in. X 4 in.) Elbow	3
UAB23070LF	1/2 in. (3 in. X 6 in.) Elbow	3
UAB26062LF	1/2 in. (3.5 in. X 8 in.) Elbow	3
UAB26060LF	1/2 in. (8 in.) Straight	3
UAB26072LF	3/4 in. (4 in. X 8 in.) Elbow	3
UAB26084LF	1 in. (13 in. X 16 in.) Elbow	3

Water Heater Hoses Bulk Packaged (Stainless Steel)

Part number	Description	Qty
UAB3088FXSS18LF	3/4 in. X 3/4 in. FIP, 18 in. Stainless Steel Corrugated Water Heater Connector	12





PEX Crimp & Clamp Fittings

SharkBite manufactures a wide selection of brass and poly crimp fittings, tools and accessories. Certified for potable water and radiant heating applications, they can be used to connect PEX pipe using copper crimp rings or stainless steel clamps.

F1807/F2159 Crimp and F2098 Clamp.

PEX Crimp and Clamp fittings and accessories are third party certified and in compliance with national and local plumbing codes, including the Uniform Plumbing Code (UPC), International Plumbing Code (IPC), and the National Plumbing Code of Canada. Check your local jurisdiction for compliance in your area.

For the most current certifications, please visit sharkbite.com.



PEX Poly Fittings

Corrosion resistant fittings certified for use in potable water and hydronic heating applications.

Coupling



Part number	Description	Qty
UP008	1/2 in. x 1/2 in. Coupling	25
UP016	3/4 in. x 3/4 in. Coupling	25
UP020	1 in. x 1 in. Coupling	25

Reducing Coupling



Part number	Description	Qty
UP058	3/4 in. X 1/2 in. Reducing Coupling	25
UP060	1 in. X 3/4 in. Reducing Coupling	25

Male Adapter



Part number	Description	Qty
UP120	1/2 in. X 1/2 in. MNPT Adapter	25
UP134	3/4 in. X 3/4 in. MNPT Adapter	25
UP138	3/4 in. X 1/2 in. MNPT Reducing Adapter	25
UP140	1 in. X 1 in. MNPT Adapter	25

Elbow



Part number	Description	Qty
UP248	1/2 in. x 1/2 in. 90° Elbow	25
UP256	3/4 in. x 3/4 in. 90° Elbow	25
UP260	1 in. x 1 in. 90° Elbow	25

Male Elbow



Part number	Description	Qty
UP280	1/2 in. X 1/2 in. MNPT Adapter Elbow	25

Reducing Elbow



Part number	Description	Qty
UP274	3/4 in. X 1/2 in. 90° Reducing Elbow	25

Tee



Part number	Description	Qty
UP360	3/8 in. x 3/8 in. x 3/8 in. Tee	10
UP362	1/2 in. x 1/2 in. x 1/2 in. Tee	25
UP370	3/4 in. x 3/4 in. x 3/4 in. Tee	25
UP374	1 in. x 1 in. x 1 in. Tee	25

Reducing Tee



Part number	Description	Qty
UP408	1/2 in. X 1/2 in. X 3/4 in. Bullnose Tee	25
UP454	3/4 in. X 3/4 in. X 1/2 in. Reducing Tee	25
UP412	3/4 in. X 1/2 in. X 3/4 in. Reducing Tee	25
UP444	3/4 in. X 1/2 in. X 1/2 in. Reducing Tee	25
UP414	1 in. X 3/4 in. X 3/4 in. Reducing Tee	25
UP415	1 in. X 1 in. X 1/2 in. Reducing Tee	25
UP416	1 in. X 1 in. X 3/4 in. Reducing Tee	25

Plug



Part number	Description	Qty
UP514	1/2 in. Plug	25
UP518	3/4 in. Plug	25
UP520	1 in. Plug	25

Adapter



Part number	Description	Qty
UP526	1/2 in. x 1/2 in. Female Swivel Adapter	25
UP532	1/2 in. X 1/2 in. Female Swivel Elbow Adapter	25

Poly Multi-Port Tee 3 Port



Part number	Port Amount	Size	Qty
UPMPT3O	3-Port	Open Tee - 3/4 in. Inlet - 1/2 in. Outlet	12
UPMPT3C	3-Port	Closed Tee - 3/4 in. Inlet - 1/2 in. Outlet	12

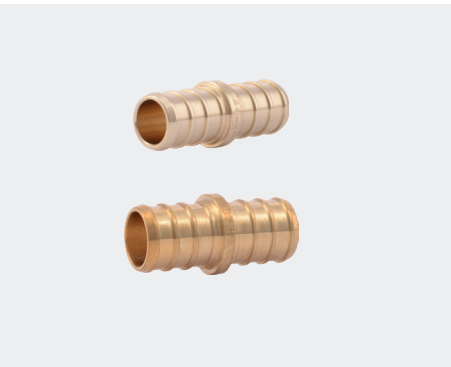
Poly Multi-Port Tee 4 Port



Part number	Port Amount	Size	Qty
UPMPT4O	4-Port	Open Tee - 3/4 in. Inlet - 1/2 in. Outlet	12
UPMPT4C	4-Port	Closed Tee - 3/4 in. Inlet - 1/2 in. Outlet	12

PEX Brass Fittings

Coupling



Part number	Description	Qty
UC006LF	3/8 in. x 3/8 in. Coupling	10
UC008LF	1/2 in. x 1/2 in. Coupling	25
UC012LF	5/8 in. x 5/8 in. Coupling	10
UC016LF	3/4 in. x 3/4 in. Coupling	25
UC020LF	1 in. x 1 in. Coupling	10
UC0135	1-1/4 in. x 1-1/4 in. Coupling	20
UC0141	1-1/2 in. x 1-1/2 in. Coupling	20
UC0154	2 in. x 2 in. Coupling	15

Reducing Coupling



Part number	Description	Qty
UC009LF	3/8 in. X 1/2 in. Reducing Coupling	10
UC058LF	1/2 in. X 3/4 in. Reducing Coupling	25
UC057LF	3/4 in. X 5/8 in. Reducing Coupling	10
UC060LF	3/4 in. X 1 in. Reducing Coupling	25
UC013522	1-1/4 in. x 3/4 in. Reducing Coupling	20
UC013528	1-1/4 in. x 1 in. Reducing Coupling	20
UC014122	1-1/2 in. x 3/4 in. Reducing Coupling	15
UC014128	1-1/2 in. x 1 in. Reducing Coupling	20
UC014135	1-1/2 in. x 1-1/4 in. Reducing Coupling	20
UC015441	2 in. x 1-1/2 in. Reducing Coupling	20

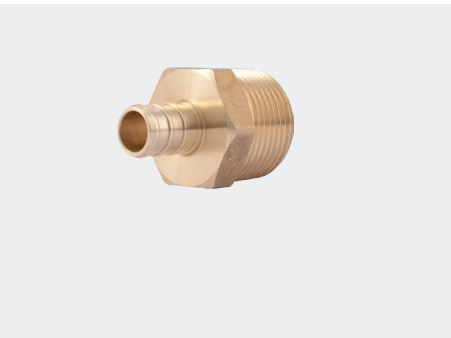
Threaded Female Adapter



Part number	Description	Qty
UC068LF	1/2 in. X 3/4 in. FNPT Adapter	25
UC072LF	1/2 in. X 1/2 in. FNPT Adapter	25
UC092LF	3/4 in. X 1/2 in. FNPT Adapter	25
UC088LF	3/4 in. X 3/4 in. FNPT Adapter	25
UC094LF	1 in. X 1 in. FNPT Adapter	10
UC113532F	1-1/4 in. x 1-1/4 in. FNPT Adapter	10
UC114140F	1-1/2 in. x 1-1/2 in. FNPT Adapter	10
UC115450F	2 in. x 2 in. FNPT Adapter	10

in.

Threaded Male Adapter



Part number	Description	Qty
UC118LF	1/2 in. X 3/4 in. MNPT Adapter	10
UC120LF	3/8 in. X 1/2 in. MNPT Adapter	25
UC116LF	1/2 in. X 1/2 in. MNPT Adapter	25
UC138LF	3/4 in. X 3/4 in. MNPT Adapter	25
UC134LF	3/4 in. X 1/2 in. MNPT Adapter	25
UC139LF	3/4 in. X 1 in. MNPT Adapter	10
UC142LF	1 in. X 1 in. MNPT Adapter	10
UC140LF	1 in. X 3/4 in. MNPT Adapter	10
UC113532M	1-1/4 in. x 1-1/4 in. MNPT Adapter	10
UC114140M	1-1/2 in. x 1-1/2 in. MNPT Adapter	10
UC115450M	2 in. x 2 in. MNPT Adapter	10

Sweat Female Adapter



Part number	Description	Qty
UC600LF	1/2 in. X 1/2 in. Female Sweat Adapter	25
UC606LF	3/4 in. X 3/4 in. Female Sweat Adapter	25
UC605LF	1 in. X 1 in. Female Sweat Adapter	10

Sweat Male Adapter



Part number	Description	Qty
UC607LF	1/2 in. X 1/2 in. Male Sweat Adapter	25
UC608LF	3/4 in. X 3/4 in. Male Sweat Adapter	25
UC609LF	1 in. X 1 in. Male Sweat Adapter	10

Elbow



Part number	Description	Qty
UC246LF	3/8 in. X 3/8 in. 90° Elbow	10
UC248LF	1/2 in. X 1/2 in. 90° Elbow	25
UC256LF	3/4 in. X 3/4 in. 90° Elbow	25
UC260LF	1 in. X 1 in. 90° Elbow	10
UC0235	1-1/4" x 1-1/4 in. 90° Elbow	10
UC0241	1-1/2 in. x 1-1/2 in. 90° Elbow	10
UC0254	2 in. x 2 in. 90° Elbow	10

Reducing Elbow



Part number	Description	Qty
UC272LF	1/2 in. X 3/8 in. 90° Reducing Elbow	10
UC274LF	1/2 in. X 3/4 in. 90° Reducing Elbow	25
UC273LF	3/4 in. X 5/8 in. 90° Reducing Elbow	10

Drop-Ear Elbow



Part number	Description	Qty
UC334LF	1/2 in. X 1/2 in. FNPT Drop Ear Elbow	25
UC340LF	3/4 in. X 3/4 in. FNPT Drop Ear Elbow	25
UC342LF	3/4 in. X 1/2 in. FNPT Drop Ear elbow	25

Adapter Elbow



Part number	Description	Qty
UC280LF	1/2 in. X 1/2 in. MNPT Adapter	25
UC278LF	1/2 in. X 3/4 in. MNPT Adapter	25
UC286LF	3/4 in. X 3/4 in. MNPT Adapter	25
UC626LF	3/4 in. X 3/4 in. Female Sweat Adapter	25
UC628LF	3/4 in. X 3/4 in. Male Sweat Adapter	25

PEX Brass Fittings

Tee



Part number	Description	Qty
UC360LF	3/8 in. X 3/8 in. X 3/8 in. Tee	10
UC362LF	1/2 in. X 1/2 in. X 1/2 in. Tee	25
UC370LF	3/4 in. X 3/4 in. X 3/4 in. Tee	25
UC374LF	1 in. X 1 in. X 1 in. Tee	10
UC0835	1-1/4 in. x 1-1/4 in. x 1-1/4 in. Tee	10
UC0841	1-1/2 in. x 1-1/2 in. x 1-1/2 in. Tee	5
UC0854	2 in. x 2 in. x 2 in. Tee	5

Bullnose Tee



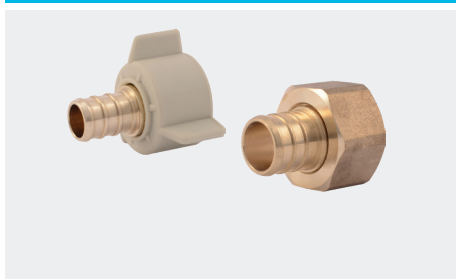
Part number	Description	Qty
UC408LF	1/2 in. X 1/2 in. X 3/4 in. Bull Nose Tee	25
UC413LF	3/4 in. X 3/4 in. X 1 in. Bull Nose Tee	10

Reducing Tee



Part number	Description	Qty
UC364LF	3/8 in. X 3/8 in. X 1/2 in. Reducing Tee	10
UC452LF	1/2 in. X 3/8 in. X 3/8 in. Reducing Tee	10
UC363LF	1/2 in. X 1/2 in. X 3/8 in. Reducing Tee	10
UC434LF	1/2 in. X 3/8 in. X 1/2 in. Reducing Tee	10
UC417LF	3/4 in. X 3/4 in. X 3/8 in. Reducing Tee	10
UC412LF	3/4 in. X 3/4 in. X 1/2 in. Reducing Tee	25
UC454LF	3/4 in. X 1/2 in. X 1/2 in. Reducing Tee	25
UC444LF	3/4 in. X 1/2 in. X 3/4 in. Reducing Tee	25
UC414LF	1 in. X 3/4 in. X 3/4 in. Reducing Tee	10
UC415LF	1 in. X 1 in. X 1/2 in. Reducing Tee	10
UC416LF	1 in. X 1 in. X 3/4 in. Reducing Tee	10
UC418LF	1 in. X 3/4 in. X 1 in. Reducing Tee	10
UC08352828	1-1/4 in. x 1 in. x 1 in. Reducing Tee	10
UC08353516	1-1/4 in. x 1-1/4 in. x 1/2 in. Reducing Tee	10
UC08353522	1-1/4 in. x 1-1/4 in. x 3/4 in. Reducing Tee	10
UC08353528	1-1/4 in. x 1-1/4 in. x 1 in. Reducing Tee	10
UC08413528	1-1/2 in. x 1-1/4 in. x 1 in. Reducing Tee	5
UC08414116	1-1/2 in. x 1-1/2 in. x 1/2 in. Reducing Tee	5
UC08414122	1-1/2 in. x 1-1/2 in. x 3/4 in. Reducing Tee	10
UC08414128	1-1/2 in. x 1-1/2 in. x 1 in. Reducing Tee	5
UC08414135	1-1/2 in. x 1-1/2 in. x 1-1/4 in. Reducing Tee	5
UC08545416	2 in. x 2 in. x 1/2 in. Reducing Tee	5
UC08545422	2 in. x 2 in. x 3/4 in. Reducing Tee	5
UC08545428	2 in. x 2 in. x 1 in. Reducing Tee	5
UC08545441	2 in. x 2 in. x 1-1/2 in. Reducing Tee	5

Swivel Adapter



Part number	Description	Qty
UC527LF	1/2 in. X 1/2 in. FNPT Swivel Adapter	10
UC526LF	1/2 in. X 3/4 in. FNPT Swivel Adapter	25
UC534LF	3/4 in. X 3/4 in. FNPT Swivel Adapter	25
UC530LF	3/4 in. X 1 in. Swivel Adapter	25
UC529LF	1 in. X 1 in. FNPT Swivel Adapter	10
UC594LF	1 in. x 1 in. NPSM	10

Swivel Elbow



Part number	Description	Qty
UC531LF	3/8 in. X 1/2 in. MNPT Swivel Elbow	10
UC532LF	1/2 in. X 1/2 in. FNPT Swivel Elbow	25

Swivel Toilet Connectors



Part number	Description	Qty
UC528LF	1/2 in. X 7/8 in. Straight Swivel Toilet Connectors	10

Plug



Part number	Description	Qty
UC512LF	3/8 in. Plug	10
UC514LF	1/2 in. Plug	25
UC518LF	3/4 in. Plug	25
UC520LF	1 in. Plug	10
UC0435	1-1/4 in. Plug	40
UC0441	1-1/2 in. Plug	30
UC0454	2 in. Plug	20

PEX Transition Fittings

Polybutylene Transition Coupling (with PB crimp ring)



Part number	Description	Qty
UC4006LF	3/8 in. x 3/8 in.	10
UC4008LF	1/2 in. x 1/2 in.	25
UC4016LF	3/4 in. x 3/4 in.	25

PEX Supply Stops

PEX Chrome Plated Quarter Turn Angle Stop



Part number	Description	Qty
23056LF	1/2 in. PEX x 1/4 in. OD Compression Angle Stop	6
23058LF	1/2 in. PEX x 3/8 in. OD Compression Angle Stop	24
23064LF	1/2 in. PEX x 3/4 in. MHT Angle Stop	6

PEX Chrome Plated Quarter Turn Straight Stop



Part number	Description	Qty
23382LF	3/8 in. PEX x 3/8 in. PEX Straight Stop	6
23057LF	1/2 in. PEX x 3/8 in. OD Compression Straight Stop	12
23062LF	1/2 in. PEX x 3/8 in. PEX Straight Stop	6
23061LF	1/2 in. PEX x 1/2 in. MPT Straight Stop	6
23063LF	1/2 in. PEX x 1/2 in. PEX Straight Stop	12

PEX Chrome Plated Straight Stop



Part number	Description	Qty
23059LF	1/2 in. PEX x 3/8 in. OD Compression Straight Stop	24
23062LF	1/2 in. x 3/8 in. Straight Stop	6
23061LF	1/2 in. x 1/2 in. MPT Straight Stop	6
23063LF	1/2 in. x 1/2 in. Straight Stop	12

PEX Chrome Plated Angle Stop



Part number	Description	Qty
23060LF	1/2 in. PEX x 3/8 in. OD Compression Angle Stop	12

PEX Chrome Plated Angle Dual Outlet Stop



Part number	Description	Qty
23066LF	1/2 in. PEX x 3/8 in. x 3/8 in. Compression Angle Stop	6

PEX Stub-Outs, Manifolds & Arrestors

Copper Stub-out Elbow



All copper stub-out elbows are lead free.

Part number	Description	Qty
23069	3/8 in. X 1/2 in. (4 in. X 4 in.) Copper Stub-Out Elbow	12
23070	1/2 in. X 1/2 in. (4 in. X 4 in.) Copper Stub-Out Elbow	6
22791	1/2 in. X 1/2 in. (4 in. X 8 in.) Copper Stub-Out Elbow	6
25094A	1/2 in. X 1/2 in. (4 in. X 8 in.) Copper Stub-Out Elbow w/ Bracket	1

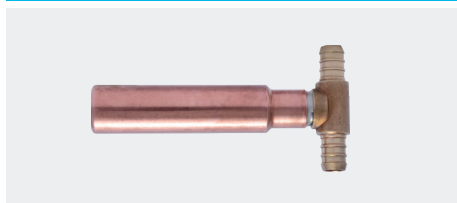
Copper Manifold with Barb Branches



1 in. trunk with 3/4 in. barb inlets & outlets and 1/2 in. barb ports - 2 in. on center, lead free

Part number	Description	Qty
25484Z	Manifold Bracket Set (for 1 in. - 1.5 in. diameter manifolds)	1
22783	3-Port Multi-Port Closed Tee - 3/4 in. Inlet - 1/2 in. Outlet	1
22784	3 Port Multi-Port Open Tee - 3/4 in. Inlet - 1/2 in. Outlet	1
22785	4 Port Multi-Port Closed Tee - 3/4 in. Inlet - 1/2 in. Outlet	1
22786	4 Port Multi-Port Open Tee - 3/4 in. Inlet - 1/2 in. Outlet	1
22787	6 Port Multi-Port Closed Tee - 3/4 in. Inlet - 1/2 in. Outlet	1
22788	6 Port Multi-Port Open Tee - 3/4 in. Inlet - 1/2 in. Outlet	1
22789	8 Port Multi-Port Closed Tee - 3/4 in. Inlet - 1/2 in. Outlet	1
22790	8 Port Multi-Port Open Tee - 3/4 in. Inlet - 1/2 in. Outlet	1

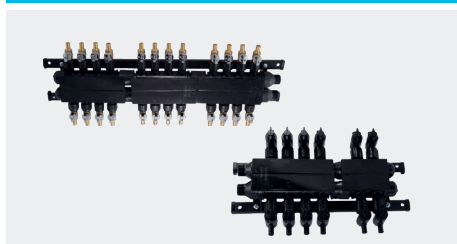
Water Hammer Arrestor



Provides maintenance-free, continuous protection against water hammer. Can be positioned vertically or horizontally.

Part number	Description	Qty
25401	1/2 in. Residential Crimp Water Hammer Arrestor	1

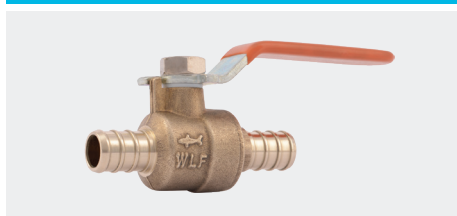
Barb and Poly Home Run Manifold



Part number	Description	Qty
RM22712	12 Port Manifold with Brass Crimp Ball Valves - 3/4 in. Inlet - 1/2 in. Outlet	1
RM22724	24 Port Manifold with Brass Crimp Ball Valves - 3/4 in. Inlet - 1/2 in. Outlet	1
PM012UP	12 Port Manifold with Poly Crimp Ball Valves - 3/4 in. Inlet - 1/2 in. Outlet	1
PM024UP	24 Port Manifold with Poly Crimp Ball Valves - 3/4 in. Inlet - 1/2 in. Outlet	1

PEX Ball Valves

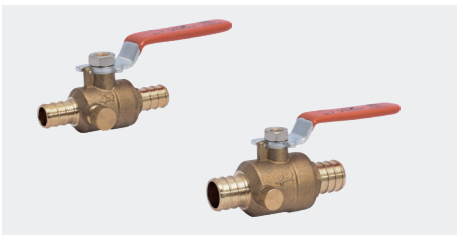
Barb Ball Valve



Part number	Description	Qty
22461LF	1/2 in. x 1/2 in. Quarter-Turn Ball Valve	12
22462LF	3/4 in. x 3/4 in. Quarter-Turn Ball Valve	12
22463LF	1 in. x 1 in. Quarter-Turn Ball Valve	6

PEX Ball Valves

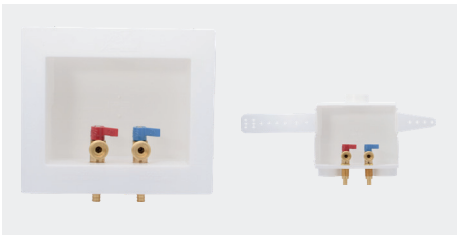
Barb Ball Valve with Drain / Vent



Part number	Description	Qty
24612LF	1/2 in. x 1/2 in. x 1/8 in. NPSM Drain Thread	6
24613LF	3/4 in. x 3/4 in. x 1/8 in. NPSM Drain Thread	6
24377	1/8 in. NPSM Replacement Drain Cap	1

PEX Outlet Boxes & Washing Machine Valves

Brass Crimp Washing Machine Outlet Box



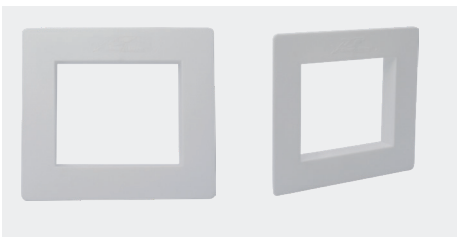
Part number	Description	Qty
25739	1/2 in. x 3/4 in. MHT	1

Brass Crimp Icemaker Outlet Box



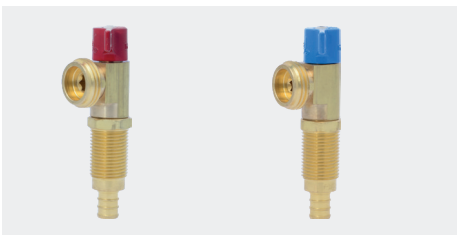
Part number	Description	Qty
25740	1/2 in. x 1/4 in. Compression	1

Faceplate Replacements



Part number	Description	Qty
25478	Ice Maker Box Replacement Faceplate for 25032, 25033, 25096, 25097, 25739	1
25464	Washing Machine Box Replacement Faceplate for 24763, 25031, 25098, 25099, 25740	1

Washing Machine Valves



Part number	Description	Qty
24998A	1/2 in. Red Handle	1
24813A	1/2 in. Blue Handle	1

Tools & Accessories

F2098 Clamp Ring (Stainless Steel)



Part number	Description	Qty
UC952	3/8 in.	100
UC953	1/2 in.	100
UC954	5/8 in.	50
UC955	3/4 in.	100
UC956	1 in.	50

F1807/F2159 Crimp Ring (Copper)



Part number	Description	Qty
23101CP25	3/8 in. (25 Pack)	6
23101CP100	3/8 in. (100 Pack)	6
23102CP25	1/2 in. (25 Pack)	24
23102CP100	1/2 in. (100 Pack)	6
23103CP25	3/4 in. (25 Pack)	12
23103CP100	3/4 in. (100 Pack)	6
23104CP25	1 in. (25 Pack)	6
23101	3/8 in.	100
23102	1/2 in.	100
23103	3/4 in.	100
24676	1-1/4 in.	50
24677	1-1/2 in.	50
24678	2 in.	20

☐ Bulk items

Suspension Clamp



Part number	Description	Qty
23065	3/8 in. J Hook PEX Pipe Clamp (10 Pack)	12
23220	1/2 in. J Hook PEX Pipe Clamp (10 Pack)	12
23220Z100	1/2 in. J Hook PEX Pipe Clamp (100 Pack)	5
23221	3/4 in. J Hook PEX Pipe Clamp (10 Pack)	12
23071A10	1/2 in. Insulated Suspension Clamp (10 Pack)	6
23072A10	3/4 in. Insulated Suspension Clamp (10 Pack)	6
23073A10	1 in. Insulated Suspension Clamp (10 Pack)	6

Insulators



Part number	Description	Qty
23074A10	1/2 in. Pipe Insulator (10 Pack)	6
23075A10	3/4 in. Pipe Insulator (10 Pack)	6
23076A10	1 in. Pipe Insulator (10 Pack)	6

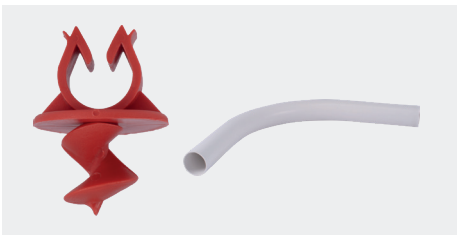
Tools & Accessories

Pex Bend Support



Part number	Description	Qty
23050	1/2 in. Polymer Bend Support with mounting bracket	12
23051	3/4 in. Polymer Bend Support	6
23053	1/2 in. Metal Pipe Support	12
23054	3/4 in. Metal Pipe Support	12

Radiant Installation Component



Part number	Description	Qty
25485Z25	1/2 in. PEX Wire Mesh Installation Clips (25 Pack)	1
25486Z25	1/2 in. PEX Foam Insulation Twist Clips (25 Pack)	1
25490Z	1/2 in. PEX Conduit Slab Support	10

PEX Crimp Tool



Part number	Description	Qty
23251	1/2 in., 3/4 in. PEX Combo Crimp Tool	1
23383	3/8 in., 1/2 in., 3/4 in. PEX Pocket Crimp Tool	1

PEX Crimp Tool Kit



Part number	Description	Qty
23100	3/8 in., 1/2 in., 3/4 in., 1 in. PEX Crimp Ring Tool Kit (Crimp Ring Gauge included)	1
24675	1-1/4 in., 1-1/2 in., 2 in. Crimp Tool	1

PEX Clamp Tool



Part number	Description	Qty
UC961	PEX Clamp Tool One-hand Operation	1
23081	PEX Clamp Tool Standard Handles	1

Crimp Ring Gauge



Part number	Description	Qty
23080	3/8 in., 1/2 in., 3/4 in., 1 in. PEX Crimp Ring Gauge	6

Crimp Ring Removal Tool



Part number	Description	Qty
23055	PEX Crimp Ring Removal Tool	6

PEX Decoiler



Part number	Description	Qty
UFH034	PEX Decoiler	1

PEX Pipe Cutter



Part number	Description	Qty
U701	PEX Pipe Cutter	1
25880	Pro PEX Cutter 1/4 in. - 1 in.	1
23369	Radial PEX cutter 1/2 in. - 1 in.	1



PEX Pipe

The benefits of SharkBite PEX

SharkBite PEX pipe is a cost-effective piping solution approved for use in both hot and cold plumbing installations. Compared to rigid pipe, PEX pipe is faster to install and its flexibility to bend around corners allows for longer runs and fewer connections — reducing cost, time and potential leak points. It is also a freeze-resistant pipe that can expand slightly if frozen and contract when thawed. SharkBite PEX-a and PEX-b pipe offers the highest rating for chlorine resistance and a six-month UV resistance, the highest available. It is approved for water service lines and burial applications, including concrete burial.

Discover the flexibility and benefits of SharkBite PEX Pipe

Cost Savings and Flexibility

Flexibility to bend around corners allows for longer runs with fewer connections, saving on costs and install time while minimizing potential leak points.

Freeze Resistant

PEX systems are less susceptible to burst in freezing conditions due to the pipe's ability to expand and contract.

Chlorine and UV Resistance

SharkBite PEX has a 5306 rating, giving it a UV rating of six months. It also has the highest chlorine resistance rating.

Health and Safety

No torches, glue or solvents required for installation, which keeps potentially dangerous chemicals out of the potable water supply.

Proven and Guaranteed

SharkBite PEX pipe has been around for more than 35 years with over 12 billion feet of pipe installed worldwide.

SharkBite PEX Pipe is third party certified and in compliance with national and local plumbing codes, including the Uniform Plumbing Code (UPC), International Plumbing Code (IPC), and the National Plumbing Code of Canada. Check your local jurisdiction for compliance in your area.

For the most current certifications, please visit sharkbite.com.



PEX-a Pipe

PEX-a Pipe (Coils)

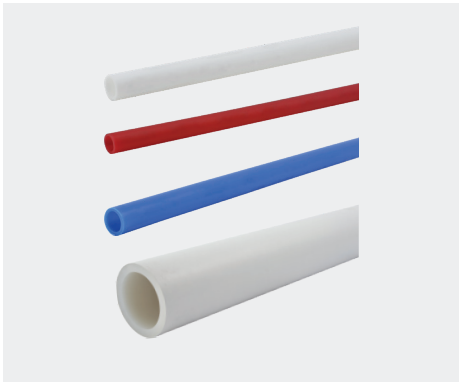


Part number White	Part number Red	Part number Blue	Size	Qty
UA60W100	UA60R100	UA60B100	1/2 in. x 100 ft.	1
UA60W300	UA60R300	UA60B300	1/2 in. x 300 ft.	1
UA70W100	UA70R100	UA70B100	3/4 in. x 100 ft.	1
UA70W300	UA70R300	UA70B300	3/4 in. x 300 ft.	1
UA80W100	UA80R100	UA80B100	1 in. x 100 ft.	1

Part number Red	Part number Blue	Size	Qty
UA60RS300	UA60BS300	1/2 in. x 300 ft. Pre-Sleeved Coils	1
UA70RS300	UA70BS300	3/4 in. x 300 ft. Pre-Sleeved Coils	1

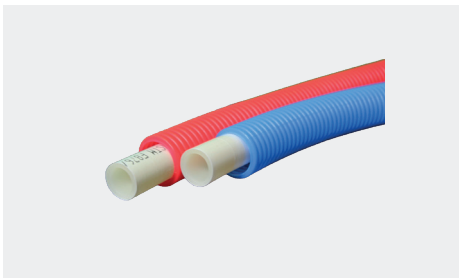
Pre-Sleeved PEX-a pipe is available in red and blue colors with white internal PEX-a pipe.

PEX-a Pipe (Straight Lengths)



Part number White	Part number Red	Part number Blue	Size	Qty
UA60W20	UA60R20	UA60B20	1/2 in. x 20 ft.	1
UA70W20	UA70R20	UA70B20	3/4 in. x 20 ft.	1
UA80W20	UA80R20	UA80B20	1 in. x 20 ft.	1
UA85W20			1-1/4 in. x 20 ft.	1
UA90W20			1-1/2 in. x 20 ft.	1
UA95W20			2 in. x 20 ft.	1

PEX-a Pre-Sleeved Pipe (Coils)



Part number	Description	Qty
UA60BS300	1/2 in. x 300 ft. PEX-a Coil Blue Sleeve	1
UA60RS300	1/2 in. x 300 ft. PEX-a Coil Red Sleeve	1

PEX-b Pipe

PEX-b Pipe (Coils)



Part number White	Part number Red	Part number Blue	Size	Qty
U850W50			1/4 in. x 50 ft.	1
U855W50			3/8 in. x 50 ft.	1
U855W100	U855R100	U855B100	3/8 in. x 100 ft.	1
U860W25	U860R25	U860B25	1/2 in. x 25 ft.	1
U860W50	U860R50	U860B50	1/2 in. x 50 ft.	1
U860W100	U860R100	U860B100	1/2 in. x 100 ft.	1
U860W300	U860R300	U860B300	1/2 in. x 300 ft.	1
U860W500	U860R500	U860B500	1/2 in. x 500 ft.	1
U870W25	U870R25	U870B25	3/4 in. x 25 ft.	1
U870W50	U870R50	U870B50	3/4 in. x 50 ft.	1
U870W100	U870R100	U870B100	3/4 in. x 100 ft.	1
U870W300	U870R300	U870B300	3/4 in. x 300 ft.	1
U870W500	U870R500	U870B500	3/4 in. x 500 ft.	1
U880W100	U880R100	U880B100	1 in. x 100 ft.	1
U880W300	U880R300	U880B300	1 in. x 300 ft.	1
U880W500	U880R500	U880B500	1 in. x 500 ft.	1
U885W100			1-1/4 in. x 100 ft.	1
U890W100			1-1/2 in. x 100 ft.	1
U895W100			2 in. x 100 ft.	1

PEX-b Pipe (Straight Lengths)



Part number White	Part number Red	Part number Blue	Size	Qty
U850W5			1/4 in. (3/8 in. OD) x 5 ft.	20
U855W5			3/8 in. x 5 ft.	10
U855W10			3/8 in. x 10 ft.	10
U860W2	U860R2	U860B2	1/2 in. x 2 ft.	60
U860W5	U860R5	U860B5	1/2 in. x 5 ft.	10
U860W10	U860R10	U860B10	1/2 in. x 10 ft.	10
U860W20	U860R20	U860B20	1/2 in. x 20 ft.	10
U870W2	U870R2	U870B2	3/4 in. x 2 ft.	30
U870W5	U870R5	U870B5	3/4 in. x 5 ft.	10
U870W10	U870R10	U870B10	3/4 in. x 10 ft.	10
U870W20	U870R20	U870B20	3/4 in. x 20 ft.	10
U880W5	U880R5	U880B5	1 in. x 5 ft.	5
U880W10	U880R10	U880B10	1 in. x 10 ft.	5
U880W20	U880R20	U880B20	1 in. x 20 ft.	5
U885W20			1-1/4 in. x 20 ft.	5
U890W20			1-1/2 in. x 20 ft.	5
U895W20			2 in. x 20 ft.	3

Reclaimed Water PEX Pipe

Reclaimed Water PEX Pipe (Purple Coils)



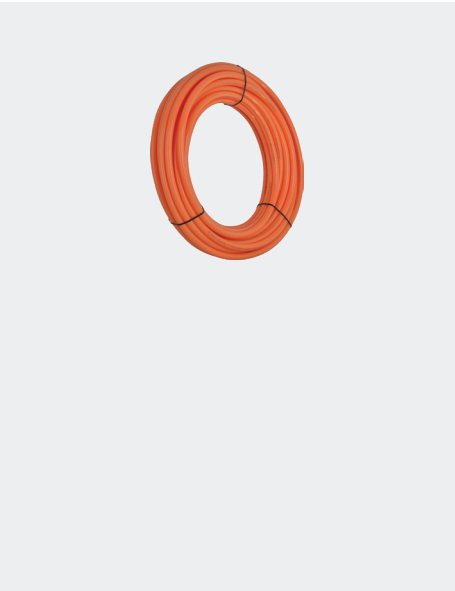
For use with non-potable water applications and shall not be installed in UV-exposed environments

SharkBite reclaimed water PEX is cross-linked polyethylene pipe for gray water, rainwater harvesting and reclaimed water systems only. Manufactured with a purple color background, the pipe meets color code requirements of national and state code bodies to clearly identify reclaimed water lines. SharkBite reclaimed water PEX is manufactured and available in 1/2 in. to 1 in..

Part number	Size	Qty
U860P100	1/2 in. x 100'	1
U860P300	1/2 in. x 300'	1
U870P100	3/4 in. x 100'	1
U870P300	3/4 in. x 300'	1
U880P100	1 in. x 100'	1
U880P300	1 in. x 300'	1

Oxygen Barrier PEX Pipe

Oxygen Barrier PEX Pipe (Orange Coils)



Use for radiant floor and hydronic heating applications. The oxygen diffusion barrier is applied to the exterior and limits oxygen permeation through the pipe wall in hydronic heating applications. This prevents corrosion of ferrous metal parts in the heating system.

Part number	Size	Qty
U855O100	3/8 in. x 100 ft.	1
U855O300	3/8 in. x 300 ft.	1
U855O500	3/8 in. x 500 ft.	1
U860O100	1/2 in. x 100 ft.	1
U860O300	1/2 in. x 300 ft.	1
U860O500	1/2 in. x 500 ft.	1
U860O1000	1/2 in. x 1000 ft.	1
U870O100	3/4 in. x 100 ft.	1
U870O300	3/4 in. x 300 ft.	1
U870O500	3/4 in. x 500 ft.	1
U880O100	1 in. x 100 ft.	1
U880O300	1 in. x 300 ft.	1
U880O500	1 in. x 500 ft.	1

Oxygen Barrier PEX Pipe (Straight Lengths)



Part number	Size	Qty
U860O20	1/2 in. x 20 ft.	10
U870O20	3/4 in. x 20 ft.	10
U880O20	1 in. x 20 ft.	5
U880O20	1 in. x 20 ft.	5

Fast. Efficient. Reliable.

No special tools needed, resulting in faster installs and fewer install errors. That means fewer callbacks, more jobs done and more satisfied customers. See how SharkBite can improve the efficiency of your next job.

Learn more at sharkbite.com



Part Number	Page	Part Number	Page	Part Number	Page	Part Number	Page	Part Number	Page	Part Number	Page
22182-0000LF	40	23955-0045	44	25088	35	K25815	51	U3001A	35	U860B10	77
22185-0000LF	40	23956-0045	44	25094A	69	K25817	51	U3008FLEX18LF	30	U860B100	77
22186-0000LF	40	24377	23	25098	36	K260WP2	48	U3008LF	21	U860B2	77
22187-0000LF	40	24377	40	25099	36	K274WP3	48	U3016FLEX18LF	30	U860B20	77
22222-0000LF	40	24377	40	25374	35	K277WP2	48	U3016LF	21	U860B25	77
22223-0000LF	40	24377	41	25401	69	K280WP2	49	U3020LF	21	U860B300	77
22223-0000LF	40	24377	41	25406	38	K308WP2	49	U3068FLEX12LF	29	U860B5	77
22441LF	35	24377	70	25464	37	K334WP3	49	U3068FLEX15LF	29	U860B50	77
22461LF	69	24383-0045	43	25464	70	K340WP2	49	U3068FLEX18BVL	29	U860B500	77
22462LF	69	24384-0045	43	25478	37	K362WP3	49	U3068FLEX18LF	29	U860O100	78
22463LF	69	24436	34	25478	70	K370WP3	49	U3068FLEX24LF	29	U860O1000	78
22604LF	35	24437	34	25484Z	33	K374WP2	49	U3086FLEX24LF	30	U860O20	78
22630LF	34	24438	34	25484Z	69	K408WP3	50	U3088FLEX12LF	29	U860O300	78
22631LF	34	24438A	34	25485Z25	72	K412WP3	50	U3088FLEX15LF	29	U860O500	78
22632LF	34	24439	34	25486Z25	72	K413WP2	50	U3088FLEX18BVL	29	U860P100	78
22633LF	34	24440	34	25490Z	72	K414WP2	50	U3088FLEX18LF	29	U860P300	78
22675-0045	43	24441	34	25521Z	44	K415WP2	50	U3088FLEX24LF	29	U860R10	77
22783	69	24442	34	25538	35	K416WP2	50	U308LF	24	U860R100	77
22784	69	24443	34	25539	35	K418WP2	50	U3120LF	22	U860R2	77
22785	69	24444	34	25550LF	41	K419WP2	50	U3134LF	22	U860R20	77
22786	69	24445	34	25551LF	41	K444WP3	50	U3140LF	22	U860R25	77
22787	69	24449-0045	43	25552LF	33	K4483WP3	49	U314LF	24	U860R300	77
22788	69	24476-0045	43	25553LF	33	K4485WP2	49	U332LF	24	U860R5	77
22789	69	24477-0045	43	25554LF	33	K454WP3	50	U334LF	24	U860R50	77
22790	69	24504	44	25555LF	33	K514WP6	50	U335LF	24	U860R500	77
22791	69	24505	44	25558LF	31	K518WP6	50	U3362LF	26	U860W10	77
22973LF	40	24529	44	25559LF	37	K520WP2	50	U3370LF	26	U860W100	77
22993LF	40	24530	44	25560LF	37	PM012SB	34	U340LF	24	U860W2	77
23036-0000LF	30	24548	44	25561	36	PM012UP	69	U3482LF	26	U860W20	77
23036LFBN	31	24549	44	25562	36	PM024SB	34	U3486LF	26	U860W25	77
23037-0000LF	31	24609-0150	45	25567	36	PM024UP	69	U351LFA	34	U860W300	77
23048-0000LF	30	24612LF	70	25568	36	PROD3810	38	U3523LF	32	U860W5	77
23049-0000LF	31	24613LF	70	25704LF	45	RM22712	69	U3524LF	32	U860W50	77
23050	72	24615-0000LF	40	25739	70	RM22724	69	U3525LF	32	U860W500	77
23051	72	24616-0000LF	40	25740	70	SBD5123814	31	U3531LF	32	U870B10	77
23053	72	24617-0000LF	40	25743LF	43	SBD5123838	31	U358LF	25	U870B100	77
23054	72	24620LF	42	25744LF	43	SBTL35	38	U359LF	25	U870B2	77
23055	73	24621LF	42	25751	43	SBTL41	38	U360LF	25	U870B20	77
23056LF	68	24622LF	42	25752	43	SBTL54	38	U362LF	25	U870B25	77
23057LF	68	24623LF	42	25753	43	SS3068FLEX18BV	30	U363LF	25	U870B300	77
23058LF	68	24626LF	42	25754	43	SS3086FLEX24LF	29	U364LF	25	U870B5	77
23059LF	68	24627LF	42	25755	43	SS3088FLEX12LF	29	U370LF	25	U870B50	77
23060LF	68	24628LF	43	25756	42	SS3088FLEX18BV	30	U374LF	25	U870B500	77
23061LF	68	24629LF	43	25757	41	SS3088FLEX18LF	29	U4008LF	28	U870O100	78
23062LF	68	24630LF	42	25758	42	SS3088FLEX24LF	29	U4016LF	28	U870O20	78
23063LF	68	24631LF	42	25759	43	SS3094FLEX24LF	29	U412LF	25	U870O300	78
23064LF	68	24632LF	42	25773	43	SS3096FLEX24LF	29	U416LF	25	U870O500	78
23065	71	24633LF	42	25774	43	U004LF	21	U4248LF	28	U870P100	78
23066LF	68	24634LF	41	25828	24	U006LF	21	U4256LF	28	U870P300	78
23069	69	24635LF	41	25829	51	U008LF	21	U444LF	25	U870R10	77
23070	69	24636LF	43	25844-0045	44	U009LF	21	U454LF	25	U870R100	77
23071A10	71	24637LF	43	25845-0045	44	U016LF	21	U462LF	26	U870R2	77
23072A10	71	24638LF	43	25846-0045	44	U020LF	21	U464LF	26	U870R20	77
23073A10	71	24656	32	25847-0045	43	U050LF	21	U512LF	27	U870R25	77
23074A10	71	24657	32	25880	38	U058LF	21	U514LF	27	U870R300	77
23075A10	71	24675	72	25880	73	U060LF	21	U518LF	27	U870R5	77
23076A10	71	24676	71	25882	38	U066LF	22	U520LF	27	U870R50	77
23080	72	24677	71	BF10101SB	41	U068LF	22	U5248LF	23	U870R500	77
23081	72	24678	71	BF13434SB	41	U070LF	22	U5256LF	23	U870W10	77
23100	72	24680	30	BF5M0134SB	41	U072LF	22	U5260LF	23	U870W100	77
23101	71	24686	32	BF5M1401SB	41	U086LF	27	U615LF	23	U870W2	77
23101CP100	71	24687	32	K008WP3	48	U088LF	22	U620LF	23	U870W20	77
23101CP25	71	24731LF	30	K016WP3	48	U092LF	22	U648LF	23	U870W25	77
23102	71	24735LF	40	K020WP2	48	U094LF	22	U656LF	23	U870W300	77
23102CP100	71	24736LF	40	K058WP3	48	U110LF	22	U660LF	23	U870W5	77
23102CP25	71	24737LF	40	K060WP2	48	U116LF	22	U701	38	U870W50	77
23103	71	24813A	70	K072WP3	48	U118LF	22	U701	73	U870W500	77
23103CP100	71	24867	44	K088WP3	48	U120LF	22	U702	37	U880B10	77
23103CP25	71	24930	33	K094WP2	48	U134LF	22	U706	37	U880B100	77
23104CP25	71	24931	33	K120WP3	48	U138LF	22	U708	37	U880B20	77
23220	71	24932	33	K134WP3	48	U139LF	22	U710	37	U880B300	77
23220Z100	71	24933	33	K140WP2	48	U140LF	22	U711	38	U880B5	77
23221	71	24934	33	K22185	51	U142LF	22	U712	37	U880B500	77
23251	72	24935	33	K22222	51	U2008-0000LF	41	U713	38	U880O100	78
23336-0000LF	30	24936	33	K22223	51	U2016-0000LF	41	U714	37	U880O20	78
23337-0000LF	31	24937	33	K23036	51	U2020-0000LF	41	U715	38	U880O20	78
23358-0045	43	24938	33	K23037	51	U2276LF	24	U766LF	22	U880O300	78
23369	38	24939	33	K24649WP	50	U244LF	23	U772LF	22	U880O500	78
23369	73	24940	33	K24650WP	50	U246LF	23	U782LF	32	U880P100	78
23382LF	68	24946	30	K248WP6	48	U248LF	23	U850W5	77	U880P300	78
23383	72	24947	31	K25578WP12	50	U249LF	24	U850W50	77	U880R10	77
23807-0045	43	24963	33	K25581WP12	50	U256LF	23	U855B100	77	U880R100	77
23808-0045	43	24983	31	K256WP6	48	U260LF	23	U855O100	78	U880R20	77
23893-0045	43	24984	31	K25721WP	50	U272LF	24	U855O300	78	U880R300	77
23894-0045	43	24985	31	K25721WP12	50	U274LF	24	U855O500	78	U880R5	77
23896-0060	43	24986	31	K25722WP	50	U276LF	24	U855R100	77	U880R500	77
23945-0060	43	24987	31	K25722WP12	50	U278LF	24	U855W10	77	U880W10	77
		24998A	70	K25723WP	50	U280LF	24	U855W100	77	U880W100	77
		25024	36	K25811	51	U281LF	24	U855W5	77	U880W20	77
		25087	35	K25813	51	U286LF	24	U855W50	77	U880W300	77

Part Number	Page	Part Number	Page	Part Number	Page	Part Number	Page	Part Number	Page	Part Number	Page
U880W5	77	UA60R100	76	UAMPT3CW	56	UC408LF	66	UR072	9	URSS3068FX18BV	12
U880W500	77	UA60R20	76	UAMPT3OW	56	UC412LF	66	UR088	9	URSS3086FX24	13
U885W100	77	UA60R300	76	UAMPT4CHW	56	UC413LF	66	UR092	9	URSS3088FX12	12
U885W20	77	UA60RS300	76	UAMPT4CW	56	UC414LF	66	UR116	9	URSS3088FX18	12
U890W100	77	UA60RS300	76	UAMPT4OHW	56	UC415LF	66	UR120	9	URSS3088FX18BV	12
U890W20	77	UA60W100	76	UAMPT4OW	56	UC416LF	66	UR134	9	URSS3088FX24	12
U895W100	77	UA60W20	76	UAMPT6CW	56	UC417LF	66	UR138	9	URSS3134FX18	12
U895W20	77	UA60W300	76	UAMPT6OW	56	UC418LF	66	UR2008	16	UXL0135	21
UA008	54	UA70B100	76	UAMPT8SCW	56	UC434LF	66	UR2016	16	UXL013528	21
UA0135	54	UA70B20	76	UC006LF	64	UC444LF	66	UR22182	16	UXL0141	21
UA013522	54	UA70B300	76	UC008LF	64	UC452LF	66	UR22185	16	UXL014128	21
UA013528	54	UA70BS300	76	UC009LF	64	UC454LF	66	UR22186	16	UXL014135	21
UA0141	54	UA70R100	76	UC012LF	64	UC512LF	67	UR22222	16	UXL0154	21
UA014122	54	UA70R20	76	UC0135	64	UC514LF	67	UR22486LF	35	UXL015441	21
UA014128	54	UA70R300	76	UC013522	64	UC518LF	67	UR22630	15	UXL0235	23
UA014135	54	UA70RS300	76	UC013528	64	UC520LF	67	UR22632	15	UXL0241	23
UA0154	54	UA70W100	76	UC0141	64	UC526LF	67	UR22973	16	UXL0254	23
UA015441	54	UA70W20	76	UC014122	64	UC527LF	67	UR23036	13	UXL0335	26
UA016	54	UA70W300	76	UC014128	64	UC528LF	67	UR23036BN	13	UXL0341	26
UA020	54	UA80B100	76	UC014135	64	UC529LF	67	UR23037	13	UXL0354	26
UA0235	54	UA80B20	76	UC0154	64	UC530LF	67	UR23037BN	13	UXL0435	27
UA0241	54	UA80R100	76	UC015441	64	UC531LF	67	UR23336	13	UXL0441	27
UA0254	54	UA80R20	76	UC016LF	64	UC532LF	67	UR23337	13	UXL0454	27
UA0435	54	UA80W100	76	UC020LF	64	UC534LF	67	UR24438	15	UXL0535	23
UA0441	54	UA80W20	76	UC0235	65	UC594LF	67	UR24615	16	UXL0541	23
UA0454	54	UA85W20	76	UC0241	65	UC607LF	65	UR24616	16	UXL0554	23
UA0541	54	UA90W20	76	UC0254	65	UC608LF	65	UR24656	14	UXL0635	21
UA0554	54	UA95W20	76	UC0435	67	UC609LF	65	UR24657	14	UXL0641	21
UA058	54	UAB068LF	57	UC0441	67	UC626LF	65	UR24680	13	UXL0654	21
UA060	54	UAB072LF	57	UC0454	67	UC628LF	65	UR24686	14	UXL0735	23
UA08282835	55	UAB086LF	57	UC057LF	64	UC952	71	UR24687	14	UXL0741	23
UA0835	54	UAB088LF	57	UC058LF	64	UC953	71	UR24735	16	UXL0754	23
UA08352228	55	UAB094LF	57	UC060LF	64	UC954	71	UR24736	16	UXL0835	25
UA08352235	55	UAB113532F	57	UC068LF	64	UC955	71	UR248	9	UXL08351635	25
UA08352822	55	UAB113532M	57	UC072LF	64	UC956	71	UR249	10	UXL08352216	25
UA08352828	55	UAB114140F	57	UC0835	66	UC961	72	UR24946	13	UXL08352222	25
UA08353522	55	UAB114140M	57	UC08352828	66	UFH034	73	UR24947	13	UXL08352228	25
UA08353528	55	UAB115450F	57	UC08353516	66	UIP120	28	UR24983	14	UXL08352235	25
UA0841	54	UAB115450M	57	UC08353522	66	UIP134	28	UR24984	14	UXL08352816	25
UA08412222	55	UAB116LF	57	UC08353528	66	UIP140	28	UR24985	14	UXL08352822	25
UA08412241	55	UAB120LF	57	UC0841	66	UIP3008	28	UR25558	14	UXL08352828	25
UA08412822	55	UAB134LF	57	UC08413528	66	UIP3016	28	UR25561	15	UXL08353516	25
UA08412828	55	UAB139LF	57	UC08414116	66	UIP3020	28	UR25567	15	UXL08353522	25
UA08412841	55	UAB140LF	57	UC08414122	66	UIP4008	28	UR256	9	UXL08353528	25
UA08413522	55	UAB142LF	57	UC08414128	66	UIP4016	28	UR274	10	UXL0841	25
UA08413528	55	UAB143535F	56	UC08414135	66	UIP4020	28	UR280	10	UXL08412822	25
UA08413535	55	UAB143535M	57	UC0854	66	UIP514	28	UR281	11	UXL08412828	25
UA08414122	55	UAB14141F	56	UC08545416	66	UIP518	28	UR3008	9	UXL08412841	25
UA08414128	55	UAB14141M	57	UC08545422	66	UIP520	28	UR3008FX18	13	UXL08413522	25
UA08414135	55	UAB145454F	56	UC08545428	66	UIP710	29	UR3016	9	UXL08413528	25
UA0854	54	UAB145454M	57	UC08545441	66	UIP712	29	UR3016FX18	13	UXL08413535	25
UA08542828	55	UAB22461LFA	58	UC088LF	64	UIP714	29	UR3068FX12	12	UXL08414116	25
UA08544122	55	UAB22462LFA	58	UC092LF	64	UP008	62	UR3068FX15	12	UXL08414122	25
UA08544128	55	UAB22463LFA	58	UC094LF	64	UP016	62	UR3068FX18	12	UXL08414128	25
UA08544135	55	UAB23057LFA	58	UC113532F	64	UP020	62	UR3068FX18BV	12	UXL08414135	25
UA08544141	55	UAB23058LFA	58	UC113532M	64	UP058	62	UR3068FX24	12	UXL0854	25
UA08544154	55	UAB23070LF	58	UC114140F	64	UP060	62	UR308	10	UXL08544122	25
UA08545422	55	UAB26060LF	58	UC114140M	64	UP120	62	UR3086FX24	13	UXL08544128	25
UA08545428	55	UAB26061LF	58	UC115450F	64	UP134	62	UR3088FX12	12	UXL08544135	25
UA08545435	55	UAB26062LF	58	UC115450M	64	UP138	62	UR3088FX15	12	UXL08544141	25
UA08545441	55	UAB26072LF	58	UC116LF	64	UP140	62	UR3088FX18	12	UXL0935	23
UA23102	58	UAB26084LF	58	UC118LF	64	UP248	62	UR3088FX18BV	12	UXL0941	23
UA23103	58	UAB280LF	57	UC120LF	64	UP256	62	UR3088FX24	12	UXL0954	23
UA23104	58	UAB3088FXS18LF	58	UC134LF	64	UP260	62	UR3120	9	UXL113532F	22
UA24676	58	UAB334LF	57	UC138LF	64	UP274	62	UR3134	9	UXL113532M	22
UA24677	58	UAB340LF	57	UC139LF	64	UP280	62	UR314	10	UXL114140F	22
UA24678	58	UAB600LF	56	UC140LF	64	UP360	63	UR334	10	UXL114140M	22
UA248	54	UAB605LF	56	UC142LF	64	UP362	63	UR3362	11	UXL115450F	22
UA256	54	UAB606LF	56	UC246LF	65	UP370	63	UR3370	11	UXL115450M	22
UA260	54	UAB607LF	57	UC248LF	65	UP374	63	UR340	10	UXL123516	27
UA362	54	UAB608LF	57	UC256LF	65	UP408	63	UR3486	11	UXL123522	27
UA370	54	UAB609LF	57	UC260LF	65	UP412	63	UR351A	11	UXL123528	27
UA374	54	UAB681LF	56	UC272LF	65	UP414	63	UR362	11	UXL124116	27
UA408	55	UAB682LF	57	UC273LF	65	UP415	63	UR370	11	UXL124122	27
UA412	55	UAB683LF	56	UC274LF	65	UP416	63	UR380A	11	UXL124128	27
UA413	55	UAB684LF	57	UC278LF	65	UP444	63	UR4008	12	UXL125416	27
UA414	55	UAB685LF	56	UC280LF	65	UP454	63	UR4016	12	UXL125422	27
UA415	55	UAB686LF	57	UC286LF	65	UP514	63	UR412	11	UXL125428	27
UA416	55	UABBV35	58	UC334LF	65	UP518	63	UR4248	12	UXL125435	27
UA418	55	UABBV41	58	UC340LF	65	UP520	63	UR4256	12	UXL125441	27
UA444	55	UABBV54	58	UC342LF	65	UP526	63	UR444	11	UXLBV35	40
UA454	55	UAMPT28223OW	56	UC360LF	66	UP532	63	UR454	11	UXLBV41	40
UA514	54	UAMPT28224OW	56	UC362LF	66	UPMPT3C	63	UR514	10	UXLBV54	40
UA518	54	UAMPT28226OW	56	UC363LF	66	UPMPT3O	63	UR518	10	UXLDC35	38
UA520	54	UAMPT284CW	56	UC364LF	66	UPMPT4C	63	UR5248	10	UXLDC41	38
UA60B100	76	UAMPT284OW	56	UC370LF	66	UPMPT4O	63	UR5256	10	UXLDC54	38
UA60B20	76	UAMPT286CW	56	UC374LF	66	UR008	9	UR648	10	UXLG03	37
UA60B300	76	UAMPT286OW	56	UC4006LF	68	UR016	9	UR656	10		
UA60BS300	76	UAMPT288SCW	56	UC4008LF	68	UR058	9	URDS123814	14		
UA60BS300	76	UAMPT2OW	56	UC4016LF	68	UR068	9	URDS123838	14		

Notes

[illegible]

Notes

[illegible]



rwc.com

sharkbite.com

Manufactured and distributed by Reliance Worldwide Corporation

Certifications

The most up to date certifications can be found at sharkbite.com.

Warranty

The most up to date warranty can be found at sharkbite.com.

2023.10