

# ANTI-SIPHON FROST PROOF HYDRANT STANDARD

## 118 SERIES

### SPECIFICATION

Sioux Chief 118 series hydrant shall be used when providing a source of water to areas of buildings that are subject to freezing temperatures. The hydrant is connected to pressure piping located in heated portions of the building, helping eliminate the possibility of freezing.

### MATERIALS

- Body:** nickel-plated brass
- Handle:** die cast metal, painted
- Bonnet:** brass
- Packing:** rubber
- Flow tube:** copper alloy/brass
- Operating rod:** copper/brass
- Operating assembly:** brass/EPDM rubber
- Spring:** stainless steel/304
- Seat:** brass

ITEM # SUBMITTED _____
JOB NAME _____
LOCATION _____
ENGINEER _____
CONTRACTOR _____
PO# _____ TAG _____



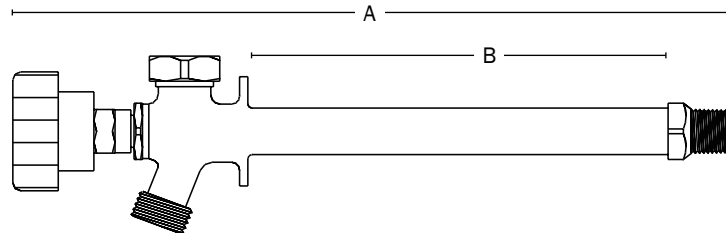
118-208

### INSTALLATION

Installation should be in accordance with local codes and regulations. Determine the location for installation and drill a 1½" diameter hole in desired location. Allow for access on interior of location for connection to pressure piping. Be sure to have the nozzle assembly positioned so hose thread is in a downward position. Allow for a slight pitch, accomplished by inserting the plastic wedge as furnished with hydrant, behind cast flange and securing to structure with appropriate fasteners through mounting holes provide on integral cast flange of hydrant. Pressure test. As with all frost-proof hydrants, removal of hose is required to prevent freezing and breaking.

### CONNECTION TYPES

- ½" MIP x ½" FSWT
- ½" PEX (F1807, F1960)
- ½" CPVC



### DIMENSIONS

	204	206	208	210	212
A	8.64"	10.65"	12.66"	14.67"	16.68"
B	4"	6"	8"	10"	12"



### Create Item Number

#### 118A B

e.g. **118X208**: 8" long, anti-siphon, frost proof hydrant with ½" PEX F1807 connection

CONNECTION TYPE A	LENGTH B
M = MIP/FSWT	<b>204</b> = 4"
-C = CPVC Socket*	<b>206</b> = 6"
X = PEX F1807	<b>208</b> = 8"
W = PEX F1960	<b>210</b> = 10"
	<b>212</b> = 12"

\*Available in 8" and 10" length only