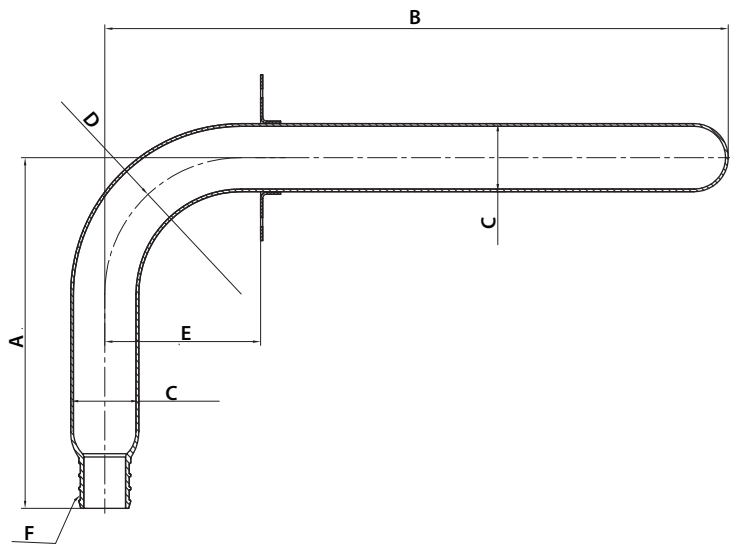




COPPER STUB OUT ELBOWS WITH MOUNTING FLANGE PEX CONNECTION (CRIMP STYLE)

- Connects to ASTM F1807 (Crimp Style) PEX
- Closed end for pressure testing
- Flange for nailing to a stud
- cUPC approved for use in USA and Canada
- ANSI/NSF 61 & ANSI/NSF 372 approved for drinking water
- Meets ASTM F1807, CSA B137.5, NSF/ANSI 14
- ASTM B88 type L copper tube
- Complies with Section 1417(d) of the Safe Drinking Water Act, the lead content requirements of Section 116875 of the California Health & Safety Code, and NSF/ANSI 372-2016



Part No.	A	B	C	D	E	F
S72009	4.00"	12.00"	0.50" NOM CTS	1.25"	1.75"	0.50" F1807 PEX
S72010	3.50"	6.00"	0.50" NOM CTS	1.25"	1.75"	0.50" F1807 PEX
S72011	3.50"	8.00"	0.50" NOM CTS	1.25"	1.75"	0.50" F1807 PEX
S72012	4.50"	8.00"	0.75" NOM CTS	1.75"	1.75"	0.75" F1807 PEX
S72013	6.00"	8.00"	1.00" NOM CTS	2.25"	2.25"	1.00" F1807 PEX