

 PROSELECT.

FORCE™

Oil-Fired Cast Iron Water Boiler

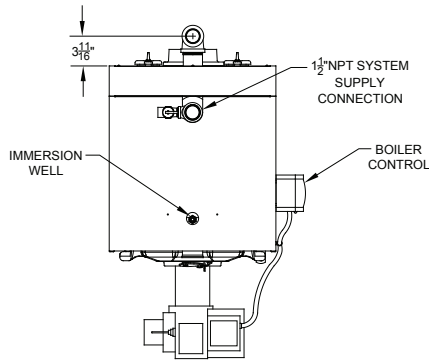


Standard Features

- 87% AFUE, ENERGY STAR® certified
- 0.6 to 1.30 GPH in four sizes
- Chimney vented, optional direct vent kit available (sizes 140, 182)
- 3-pass cast iron heat exchanger
- Fully-opening, reversible, cast iron swing door
- Return water mixing tube
- Steel section connectors
- Lifetime limited warranty on heat exchanger

FERGUSON.COM/PROSELECT

Technical Information



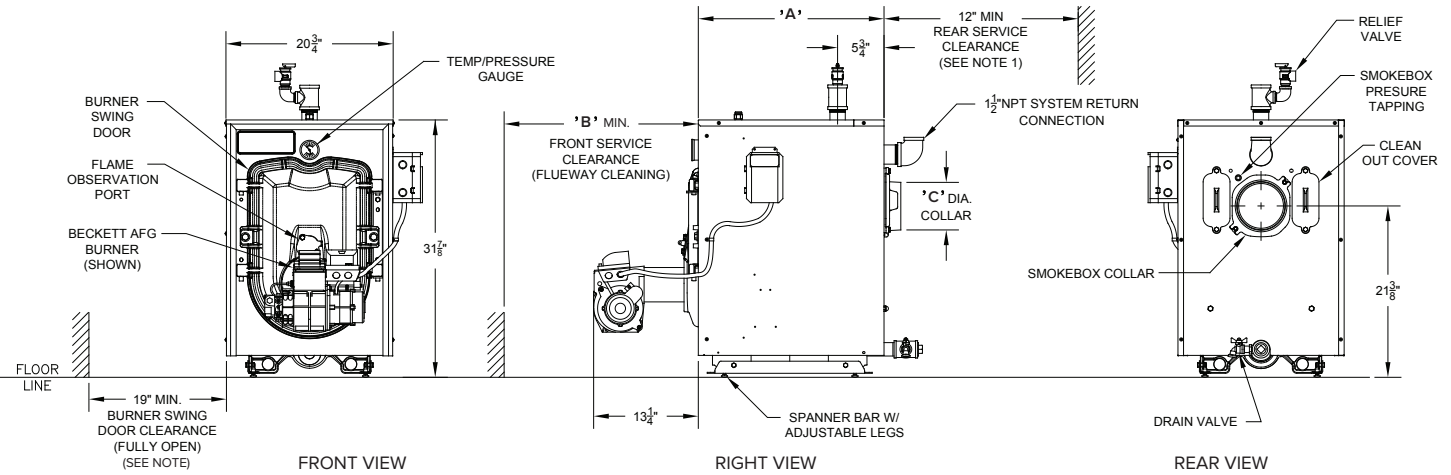
TOP VIEW

| Model | Min. Chimney Requirements | | | Direct Vent System | |
|---------------|---------------------------|--------------------|---------------|--------------------|-------------------------------|
| | Round Inch Diam. | Rectangle (Inches) | Height (Feet) | Kit Part Number | Vent Connector Diameter (In.) |
| FORCEOIL084-E | 6 | 8 x 8 | 15 | N/A | N/A |
| FORCEOIL115-E | 6 | 8 x 8 | 15 | N/A | N/A |
| FORCEOIL140-E | 6 | 8 x 8 | 15 | 106401-01 | 5 |
| FORCEOIL182-E | 7 | 8 x 8 | 15 | 106401-01 | 5 |

Note:

Return fittings and drain valve shipped loose.

The manufacturer should be consulted before selecting a boiler for installations having unusual piping and pickup requirements, such as intermittent system operation, extensive piping, etc.



| Model | Dimensions (Inches) | | | Burner Capacity | | | Net AHRI Ratings (MBH) | AFUE % | Water Content (Gal.) | Heating Transfer Surface Area (Sq. Ft.) | Approximate Shipping Weight (lbs.) | ALT1 |
|---------------|---------------------|----|---|-----------------|-----|----------------------------|------------------------|--------|----------------------|---|------------------------------------|-------------------|
| | A | B | C | GPH | MBH | DOE Heating Capacity (MBH) | | | | | | |
| FORCEOIL084-E | 17 | 24 | 5 | 0.60 | 84 | 74 | 64 | 87 | 7.7 | 13.29 | 475 | FORCEOIL084EGBHDR |
| FORCEOIL115-E | 17 | 24 | 5 | 0.80 | 115 | 101 | 88 | 87 | 7.7 | 13.29 | 475 | FORCEOIL115EGBHDR |
| FORCEOIL140-E | 23 | 24 | 6 | 1.00 | 140 | 123 | 107 | 87 | 11.08 | 20.29 | 567 | FORCEOIL140EGBHDR |
| FORCEOIL182-E | 29 | 30 | 6 | 1.30 | 182 | 160 | 139 | 87 | 14.46 | 27.29 | 660 | FORCEOIL182EGBHDR |

The Net AHRI Ratings shown are based on a piping and pickup allowance of 1.15.

Additional Standard Features

- Fully packaged
- 3450 RPM flame retention Beckett oil burner
- Beckett GeniSYS primary control
- Return water mixing tube
- Grundfos Alpha2 circulator
- Draft regulator
- Electronic ignitor 14KV
- Clean cut fuel pump
- Tridicator
- Relief valve
- Drain valve
- Integrated lifting legs (for level installation)

