



# FORCE<sup>TM</sup>



*high efficiency  
cast iron  
oil-fired boiler*

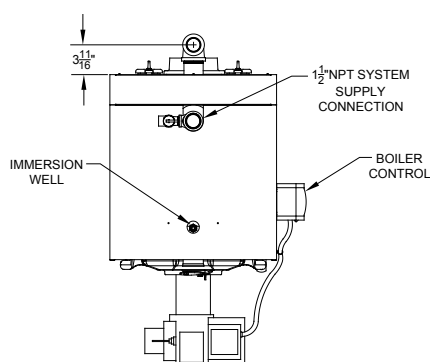


## Standard Features

- Offered exclusively by Ferguson®
- 87% AFUE, ENERGY STAR® certified
- 0.6 to 1.30 GPH in four sizes
- Chimney vented, optional direct vent kit available (sizes 140, 182)
- 3-pass cast iron heat exchanger
- Fully-opening, reversible, cast iron swing door
- Return water mixing tube
- Steel section connectors
- Lifetime limited warranty on heat exchanger

**FERGUSON**

# Technical Information



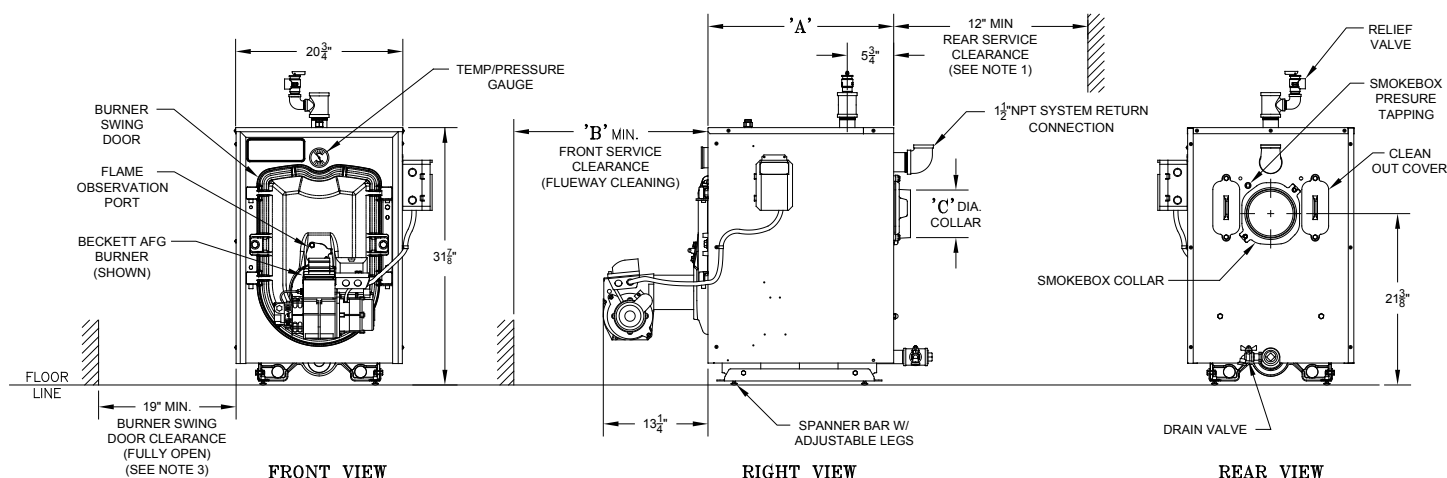
TOP VIEW

Model	Min. Chimney Requirements			Direct Vent System	
	Round Inch Diam.	Rectangle (Inches)	Height (Feet)	Kit Part Number	Vent Connector Diameter (In.)
FORCEOL084-E	6	8 x 8	15	N/A	N/A
FORCEOL115-E	6	8 x 8	15	N/A	N/A
FORCEOL140-E	6	8 x 8	15	106401-01	5
FORCEOL182-E	7	8 x 8	15	106401-01	5

**Note:**

Return fittings and drain valve shipped loose.

The manufacturer should be consulted before selecting a boiler for installations having unusual piping and pickup requirements, such as intermittent system operation, extensive piping, etc.



FRONT VIEW

RIGHT VIEW

REAR VIEW



Model	Dimensions (Inches)			Burner Capacity			Net AHRI Ratings (MBH)	AFUE %	Water Content (Gal.)	Heating Transfer Surface Area (Sq. Ft.)	Approximate Shipping Weight (lbs.)	ALT1
	A	B	C	GPH	MBH	DOE Heating Capacity (MBH)						
FORCEOL084-E	17	24	5	0.60	84	74	64	87	7.7	13.29	475	FORCEOIL084EGBHDR
FORCEOL115-E	17	24	5	0.80	115	101	88	87	7.7	13.29	475	FORCEOIL115EGBHDR
FORCEOL140-E	23	24	6	1.00	140	123	107	87	11.08	20.29	567	FORCEOIL140EGBHDR
FORCEOL182-E	29	30	6	1.30	182	160	139	87	14.46	27.29	660	FORCEOIL182EGBHDR

The Net AHRI Ratings shown are based on a piping and pickup allowance of 1.15.

## Additional Standard Features

- Fully packaged
- 3450 RPM flame retention Beckett oil burner
- Beckett GeniSYS primary control
- Return water mixing tube
- Grundfos Alpha2 circulator
- Draft regulator
- Electronic ignitor 14KV
- Clean cut fuel pump
- Tridicator
- Relief valve
- Drain valve
- Integrated lifting legs (for level installation)



**FERGUSON**