



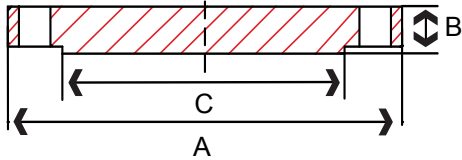
Stainless Steel Flanges

Specifications

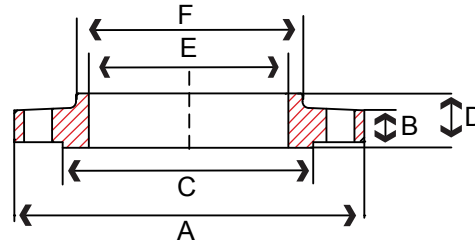
- Forged stainless steel material conforms to ASME SA182 Grades F304/304L & F316/316L
- Forged stainless steel flange dimensions conform to ASME B16.5
- NPT threads conform to ASME B1.20.1
- Manufacturing facility is ISO 9001:2008
- Stainless steel plate flange dimensions conform to ASME B16.5 Class 150
- Stainless steel plate flange made from ASTM A240 plate or cast in conformance with ASTM A351
- CMTR's Available



SCI ProPak™ System



Blind Flange



Slip-On Flange

S S F L A N G E S

150# – Blind Raised Face Flange

Size in	Part Number		A in	B in	C in	Bolt Circle in	Bolt Hole Diameter in	Number of Bolt Holes	Weight lb
	304/304L	316/316L							
1/2	S1014BL004N	S1016BL004N	3.50	0.44	1.38	2.38	0.62	4	1
3/4	S1014BL006N	S1016BL006N	3.88	0.50	1.69	2.75	0.62	4	2
1	S1014BL010N	S1016BL010N	4.25	0.56	2.00	3.12	0.62	4	2
1-1/4	S1014BL012N	S1016BL012N	4.62	0.62	2.50	3.50	0.62	4	3
1-1/2	S1014BL014N	S1016BL014N	5.00	0.69	2.88	3.88	0.62	4	4
2	S1014BL020N	S1016BL020N	6.00	0.75	3.62	4.75	0.75	4	5
2-1/2	S1014BL024N	S1016BL024N	7.00	0.88	4.12	5.50	0.75	4	7
3	S1014BL030N	S1016BL030N	7.50	0.94	5.00	6.00	0.75	4	9
4	S1014BL040N	S1016BL040N	9.00	0.94	6.19	7.50	0.75	8	17
5	S1014BL050N	S1016BL050N	10.00	0.94	7.31	8.50	0.88	8	20
6	S1014BL060N	S1016BL060N	11.00	1.00	8.50	9.50	0.88	8	26

Raised Face 1/16"

150# – Slip-On Raised Face Flange

Size in	Part Number		A in	B in	C in	D in	E in	F in	Bolt Circle in	Bolt Hole Diameter in	Number of Bolt Holes	Weight lb
	304/304L	316/316L										
1/2	S1014SO004N	S1016SO004N	3.50	0.44	1.38	0.62	0.88	1.19	2.38	0.62	4	1
3/4	S1014SO006N	S1016SO006N	3.88	0.50	1.69	0.62	1.09	1.50	2.75	0.62	4	2
1	S1014SO010N	S1016SO010N	4.25	0.56	2.00	0.69	1.36	1.94	3.12	0.62	4	2
1-1/4	S1014SO012N	S1016SO012N	4.62	0.62	2.50	0.81	1.70	2.31	3.50	0.62	4	3
1-1/2	S1014SO014N	S1016SO014N	5.00	0.69	2.88	0.88	1.95	2.56	3.88	0.62	4	3
2	S1014SO020N	S1016SO020N	6.00	0.75	3.62	1.00	2.44	3.06	4.75	0.75	4	5
2-1/2	S1014SO024N	S1016SO024N	7.00	0.88	4.12	1.12	2.94	3.56	5.50	0.75	4	7
3	S1014SO030N	S1016SO030N	7.50	0.94	5.00	1.19	3.57	4.25	6.00	0.75	4	8
4	S1014SO040N	S1016SO040N	9.00	0.94	6.19	1.31	4.60	5.31	7.50	0.75	8	13
5	S1014SO050N	S1016SO050N	10.00	0.94	7.31	1.44	5.66	6.44	8.50	0.88	8	15
6	S1014SO060N	S1016SO060N	11.00	1.00	8.50	1.56	6.72	7.56	9.50	0.88	8	19

Raised Face 1/16"