



# Wireless Transmitter Bluetooth (WT-BT)

Opening & Replacing Battery Instructions  
Version 4

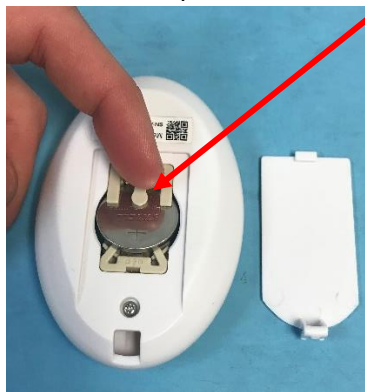
The following tools will be needed: a small Flat Head screwdriver or pen.

## Opening the Transmitter

**Step 1.** Remove battery cover by depressing the bottom tab upward



**Step 2.** Depress center of battery holder. This is marked by a round tab in the middle of the battery.





## Removing the Battery

**Step 3.** Remove battery from holder, a pen may be required to free it from holder.



**Step 4.** Once the battery is removed, depress the activation button to discharge any energy.

**Step 5.** Slide battery in to holder and press down on the raised side of battery until battery clicks in to position. Replace the cover, the transmitter is now ready to program or use as needed.



For additional assistance please call us at (714) 668-1200 or (800) 200-1956

**Please refer to our website at [www.gothotwater.com](http://www.gothotwater.com) for warranty and indemnification information.**

Wireless Bluetooth/RF device range is a consistently observed performance estimate when tested in a factory setting, by ACT Inc. All ranges listed in the instructions and marketing materials are the best known estimates and cannot be considered absolute or guaranteed due to the many possible environments the system may be installed in. The end user may experience lesser or greater range based on both the physical and RF environment the system is used in.