

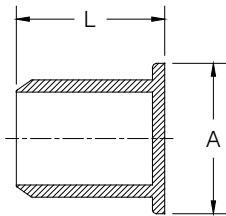
# HARCO PVC IPS GASKETED FITTINGS

## DESIGN DATA

### Applicable Standards:

Materials:	ASTM D-1784, NSF 14
Joints:	ASTM D-3139
Gaskets:	ASTM F-477
Wall Thickness:	SDR-21
NSF 14 Certification	
Vacuum Qualification:	22"-Hg for 4 hours with no loss per method of ASTM D-3139

### PLUG (Spigot)



Poured concrete thrust blocks only.

SIZE	PART #	STYLE	A	L	WT (approx.)
1½	144-015	Fab	2.7	5.2	0.2
2	144-020	M	3.0	2.7	0.2
2½	144-025	Fab	3.4	5.3	0.8
3	144-030	M	3.8	3.5	0.4
4	144-040	M	5.0	3.5	0.4
6	144-060	M	6.8	5.4	2.3
8	144-080	M	8.9	6.4	3.8

### NOTES:

- All lay lengths & weights are approximate and are subject to change without notice
- Fabricated fitting configurations may vary

### STYLE LEGEND:

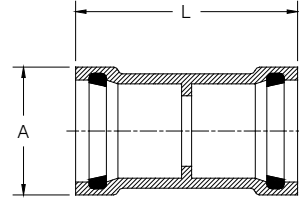
M - One piece molded  
 C - Manufactured by Certain-Teed Corporation  
 Fab - Fabricated using SCH-40 PVC fittings with Harco Spigot adapters (or pipe) solvent welded together (See pressure rating warning on this page)

**Fab Style:** These fittings use SCH-40 PVC fittings. SCH-40 PVC fittings do not have a long term pressure rating. See section 6.3.2 of ASTM D2466-97. Use of these fittings in pressure systems is at user's risk.

The use of anything but properly designed and installed thrust blocks will reduce the life of plastic fittings. Thrust blocks must be poured concrete only and sized for the soil conditions. Joint restraint products are available.

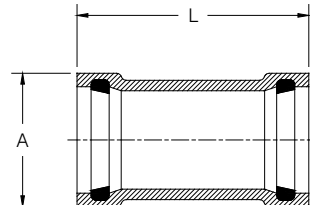
**WARNING:** Cyclical pressure surges (WATER HAMMER) can reduce the life of PVC fittings. Where such conditions may exist, HARCO DEEP BELL DUCTILE IRON FITTINGS for IPS size PVC pipe should be considered. HARCO DEEP BELL DUCTILE IRON FITTINGS are available in sizes 1½" through 12".

### LINE COUPLING (GxG) (w/ Stop)



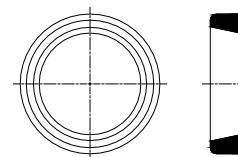
SIZE	PART #	STYLE	A	L	WT (approx.)
1½	108-015	M	2.8	6.5	0.5
2	108-020	M	3.3	6.7	0.7
2½	108-025	M	3.8	7.0	0.9
3	108-030	M	4.5	7.2	1.3
4	108-040	M	5.9	10.6	2.7
6	108-060	M	8.3	9.3	5.6
8	108-080	M	10.4	11.1	10.3
10	108-100	C	11.5	11.5	14.0
12	108-120	C	12.0	12.0	22.0

### REPAIR COUPLING (GxG) KNOCK-ON STYLE (No Stop)



SIZE	PART #	STYLE	A	L	WT (approx.)
1½	109-015	M	2.8	6.5	0.5
2	109-020	M	3.3	7.8	0.7
2½	109-025	M	3.8	8.4	0.9
3	109-030	M	4.5	9.0	1.3
4	109-040	M	5.9	10.6	2.7
5	109-050	M	7.0	11.2	4.1
6	109-060	M	8.3	11.6	5.6
8	109-080	M	10.4	11.1	10.3
10	109-100	C	11.5	11.5	14.0
12	109-120	C	12.0	12.0	22.0

### REPLACEMENT HARCO PRESSURE GASKET



SIZE	PART #	STYLE	WT (approx.)
1½	195-015	M	0.1
2	195-020	M	0.1
2½	195-025	M	0.1
3	195-030	M	0.1
4	195-040	M	0.2
6	195-060	M	0.3
8	195-080	M	0.3

Call For Other Sizes, Configurations & Gasket Materials



### THE HARRINGTON CORPORATION

P.O. BOX 10335 • LYNCHBURG, VIRGINIA 24506 • 3721 COHEN PLACE • LYNCHBURG, VIRGINIA 24501  
 PHONE: (434) 845-7094 • FAX: (434) 845-8562 • E-MAIL: sales@harcofittings.com • WEB: www.harcofittings.com  
 20180618