



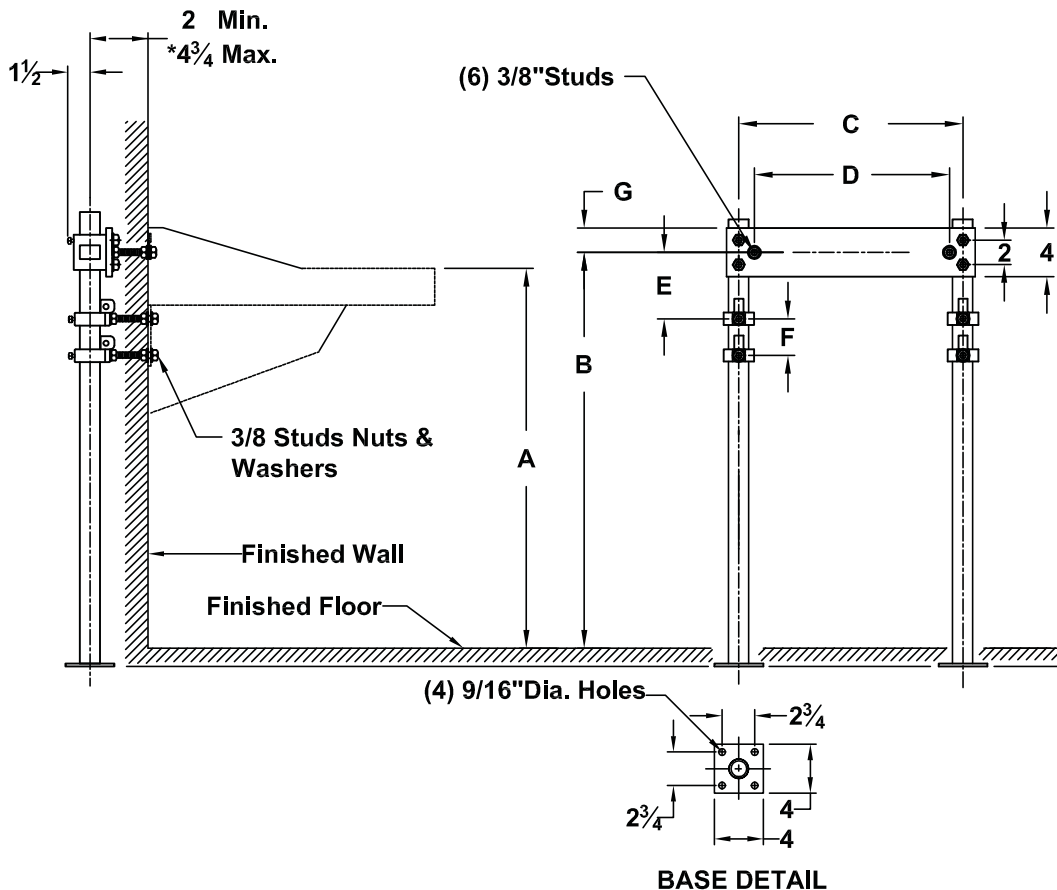
**SMITH MFG. CO.**

MEMBER OF ACORN ENGINEERING'S FAMILY OF COMPANIES  
POST OFFICE BOX 3237  
MONTGOMERY, ALABAMA 36109-0237 (USA)  
TEL: 334-277-8520 TELEX: 782306 FAX: 334-272-7396



LOCATION

**FIXTURE SUPPORT FLOOR MOUNTED TYPE**  
**FOR LAVATORIES AND SINKS WITH HANGER PLATE AND SLEEVES**  
**TO SUPPORT WALL HANGER AND BRACKETS FURNISHED BY OTHERS**



**WHITEHALL**

FIXTURE NAME		NUMBER		SIZE		
Ligature Resistant		3775		20 X 21 3/4		
A	B	C	D	E	F	G
34	34 3/4	14 1/4	13 1/4	7 1/2	9 5/8	2

**NOTE:** \*This dimension can be increased when fixture support is to be installed behind the wall. (Specify when required and wall thickness).

**NOTE:** The rough-in dimensions listed on this drawing are based on current information available to Jay R. Smith by the fixture manufacturers. We recommend that you verify these dimensions with the fixture manufacturer. We will not accept responsibility for rough-in dimension changes by the fixture manufacturer.

DRAWING NUMBER

SIZE

SCALE: NONE

DATE: 08-27-2014

APPROVED BY: CR

CHECKED BY: CL

DRAWN BY: CL

0848

FIGURE NUMBER

WE CAN ASSUME NO RESPONSIBILITY FOR USE OF SUPERSEDED OR VOID DATA

DIMENSIONS ARE SUBJECT TO MANUFACTURERS TOLERANCE AND CHANGE WITHOUT NOTICE

WEIGHT  
POUNDS

VOLUME  
CUBIC FEET

FIGURE NUMBER

**0848**

REV. DATE DESCRIPTION BY CKD. BY