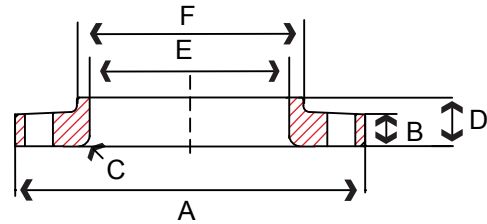


Threaded Flange



Lap Joint Flange

S S F L A N G E S

**150# – Threaded Raised Face Flange**

Size in	Part Number		A in	B in	C in	D in	E in	Bolt Circle in	Bolt Hole Diameter in	Number of Bolt Holes	Weight lb
	304/304L	316/316L									
1/2	S1014TH004N	S1016TH004N	3.50	0.44	1.38	0.62	1.19	2.38	0.62	4	1
3/4	S1014TH006N	S1016TH006N	3.88	0.50	1.69	0.62	1.50	2.75	0.62	4	2
1	S1014TH010N	S1016TH010N	4.25	0.56	2.00	0.69	1.94	3.12	0.62	4	2
1-1/4	S1014TH012N	S1016TH012N	4.62	0.62	2.50	0.81	2.31	3.50	0.62	4	3
1-1/2	S1014TH014N	S1016TH014N	5.00	0.69	2.88	0.88	2.56	3.88	0.62	4	3
2	S1014TH020N	S1016TH020N	6.00	0.75	3.62	1.00	3.06	4.75	0.75	4	5
2-1/2	S1014TH024N	S1016TH024N	7.00	0.88	4.12	1.12	3.56	5.50	0.75	4	7
3	S1014TH030N	S1016TH030N	7.50	0.94	5.00	1.19	4.25	6.00	0.75	4	8
4	S1014TH040N	S1016TH040N	9.00	0.94	6.19	1.31	5.31	7.50	0.75	8	13
5	S1014TH050N	-	10.00	0.94	7.31	1.44	6.44	8.50	0.88	8	15
6	S1014TH060N	S1016TH060N	11.00	1.00	8.50	1.56	7.56	9.50	0.88	8	19

Raised Face 1/16"

**150# – Lap Joint Flange**

Size in	Part Number		A in	B in	C in	D in	E in	F in	Bolt Circle in	Bolt Hole Diameter in	Number of Bolt Holes	Weight lb
	304/304L	316/316L										
1/2	S1014LJ004N	S1016LJ004N	3.50	0.44	0.12	0.62	0.90	1.19	2.38	0.62	4	1
3/4	S1014LJ006N	S1016LJ006N	3.88	0.50	0.12	0.62	1.11	1.50	2.75	0.62	4	2
1	S1014LJ010N	S1016LJ010N	4.25	0.56	0.12	0.69	1.38	1.94	3.12	0.62	4	2
1-1/4	S1014LJ012N	S1016LJ012N	4.62	0.62	0.19	0.81	1.72	2.31	3.50	0.62	4	3
1-1/2	S1014LJ014N	S1016LJ014N	5.00	0.69	0.25	0.88	1.97	2.56	3.88	0.62	4	3
2	S1014LJ020N	S1016LJ020N	6.00	0.75	0.31	1.00	2.46	3.06	4.75	0.75	4	5
2-1/2	S1014LJ024N	S1016LJ024N	7.00	0.88	0.31	1.12	2.97	3.56	5.50	0.75	4	7
3	S1014LJ030N	S1016LJ030N	7.50	0.94	0.38	1.19	3.60	4.25	6.00	0.75	4	8
4	S1014LJ040N	S1016LJ040N	9.00	0.94	0.44	1.31	4.60	5.31	7.50	0.75	8	13
5	S1014LJ050N	-	10.00	0.94	0.44	1.44	5.69	6.44	8.50	0.88	8	15
6	S1014LJ060N	S1016LJ060N	11.00	1.00	0.50	1.56	6.75	7.56	9.50	0.88	8	19