



Product information presented here reflects conditions at time of publication. Consult factory regarding discrepancies or inconsistencies.

PUMP COMPANY

Zoeller Family of Water Solutions™

MAIL TO: P.O. BOX 16347 • Louisville, KY 40256-0347
SHIP TO: 3649 Cane Run Road • Louisville, KY 40211-1961
 (502) 778-2731 • 1 (800) 928-PUMP • FAX (502) 774-3624

visit our web site:
www.zoeller.com

SWITCH-MATE PIGGYBACK VARIABLE LEVEL FLOAT SWITCH (VLFS)

- Converts nonautomatic pump to automatic pump.
- Simple installation.
- Adjustable/Variable level.
- Standard 15' and 20' SJOW CPE cord with molded plug. 10-0055 and 10-0065 - 10' cord standard.
- Float is constructed of durable PVC/polypropylene encasing variable level switch.
- Standard - normally open (NO) ("pumps down").
- Optional - Normally closed available (NC) ("pumps up"). Consult Factory.
- Maximum operating temperature for 10-0748 - 120°F (49°C). All other switches - 140°F (60°C).
- Float is omnidirectional (no "UP" side).
- Includes mounting clamp.
- Designed for EFFLUENT, SEWAGE and DEWATERING applications.
- Variable level float switch, for use in 18" minimum diameter basins.
- 10-0748 - 25' cord standard, no molded plug. Can be used as a control switch to operate an external magnetic or combination starter on three phase pumps.
- Vertical piggyback float switch. Ideal for narrow diameter basins. 6½" maximum cycle range.
- Use recommendation chart for switch selection.

SINGLE PIGGYBACK VARIABLE LEVEL FLOAT SWITCH

13 Amp Maximum

Normally Open (NO)

- 10-0055 - 115V - 10'
- 10-0034 - 115V - 15'
- 10-0035 - 230V - 15'
- 10-0063 - 115V - 20'
- 10-0706 - 230V - 20'

Normally Closed (NC)

- 10-0065 - 115V - 10'
- 10-0037 - 115V - 15'
- 10-0062 - 230V - 15'

15 Amp Maximum

Normally Open (NO)

- 10-0032 - 115V - 15'
- 10-0033 - 230V - 15'
- 10-0705 - 115V - 20'
- 10-0559 - 230V - 20'

Normally Closed (NC)

- 10-0064 - 115V - 15'

20 Amp Maximum

Normally Open (NO)

- 10-0748 - 115V/230V - 25'



Note: All variable level float switches in this section are mechanically activated and do not contain mercury.



SINGLE PIGGYBACK VERTICAL FLOAT SWITCH



13 Amp Maximum
Normally Open (NO)
Vertical

- 10-2041 - 115V - 10'
- 10-2042 - 115V - 15'
- 10-2043 - 115V - 20'

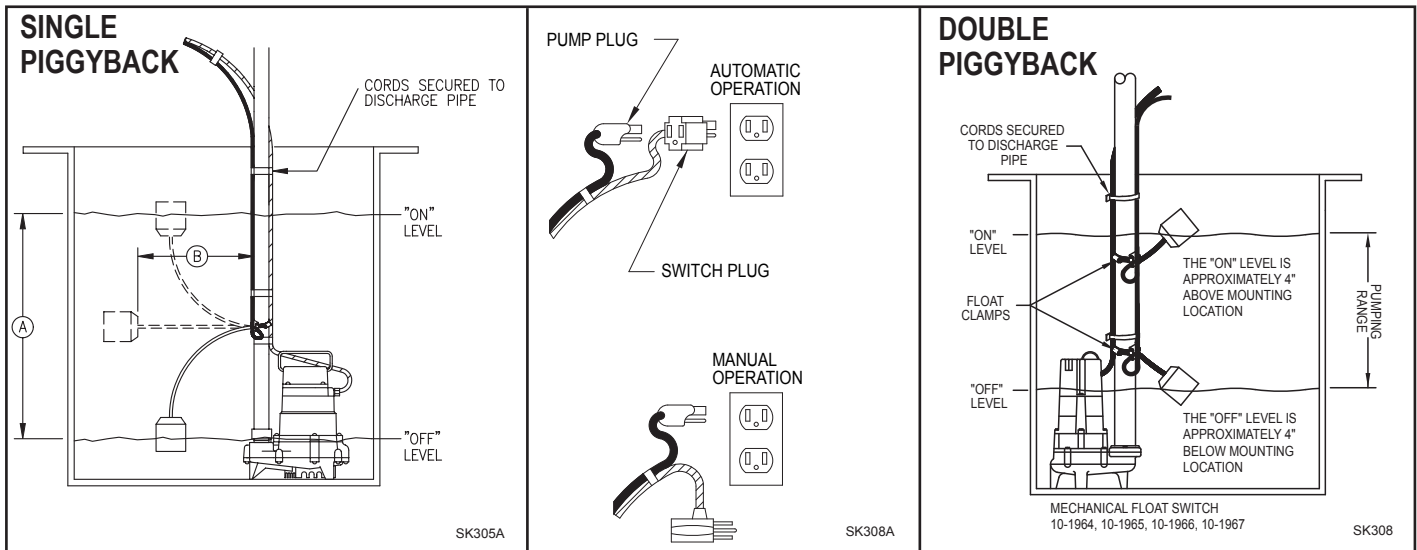
DOUBLE PIGGYBACK VARIABLE LEVEL FLOAT SWITCH

Mechanical

- 10-1964 - 115V - 13 Amp - 15'
- 10-1965 - 230V - 13 Amp - 15'



TYPICAL INSTALLATIONS



PIGGYBACK VARIABLE LEVEL FLOAT SWITCH RECOMMENDATIONS FOR ZOELLER COMPANY PUMPS

| SWITCH MODEL NO. | SWITCH SPECIFICATIONS | PUMPING RANGE | USE WITH ZOELLER PUMP MODEL NUMBERS |
|------------------|--|---------------------|---|
| 10-0055 | 10' Cord, Single Piggyback 115V, 1 PH, 13A | 6" Min. 36" Max. | "N" Models - 53, 55, 57, 59, 98, 137, 139, 140, 264, 266, 267, 268 & 282 (See Note 2). |
| 10-0034 | 15' Cord, Single Piggyback 115V, 1 PH, 13A Max. | | |
| 10-0063 | 20' Cord, Single Piggyback 115V, 1 PH, 13A | | |
| 10-0032 | 15' Cord, Single Piggyback 115V, 1 PH, 15A | 6" Min. 36" Max. | "N" Models - 161, 163, 270 & 292 (See Note 2). |
| 10-0705 | 20' Cord, Single Piggyback 115V, 1 PH, 15A | | |
| 10-1964 | 15' Cord, Double Piggyback 115V, 1 PH, 13A | 3" Min. 48" Max. | "N" Models - 53, 55, 57, 59, 98, 137, 139, 140, 264, 266, 267, 268, & 282 (See Note 2). |
| 10-0035 | 15' Cord, Single Piggyback 230V, 1 PH, 13A | 6" Min. 36" Max. | "E" Models - 53, 55, 57, 59, 98, 137, 139, 140, 161, 163, 165, 185, 264, 266, 267, 268, 270, 282, 284 & 293 (See Note 2). "I" Models - 137, 139, 161, 163, 165, 185, 266, 267, 268, 282, 284, 293 (See Note 2). |
| 10-0706 | 20' Cord, Single Piggyback 230V, 1 PH, 13A | | |
| 10-0033 | 15' Cord, Single Piggyback 230V, 1 PH, 15A | 6" Min. 36" Max. | "E" Models - 186, 188, 294, 404 & 820 (See Note 2). "I" Model - 404. |
| 10-0559 | 20' Cord, Single Piggyback 230V, 1 PH, 15A | | |
| 10-1965 | 15' Cord, Double Piggyback 230V, 1 PH, 13A | 3" Min. 48" Max. | "E" Models - 53, 55, 57, 59, 98, 137, 139, 140, 161, 163, 165, 185, 264, 266, 267, 268, 270, 282, 284 & 293 (See Note 2). "I" Models - 137, 139, 161, 163, 165, 185, 266, 267, 268, 282, 284 & 293 (See Note 2). |
| 10-0748 | 25' Cord, Wired in Pump Switch 115V or 230V, 1 PH, 20A (See Note 3). | 9" Min. 24" Max. | "E" Models - 189, 295 & 405 (See Note 2). "I" Models - 188, 189, 294, 295, 405 & 820 (See Note 2). |

Notes:

- "I" models - 188, 189, 294, 295, 405 use the single piggyback type only with a 10-0125 Simplex Pump Control Box.
- Remove plug if present and use with "Junction Box" 10-0002 when field wiring is required.
- Maximum operating temperature for 10-0748 - 120°F (49°C); all other switches - 140°F (60°C).
- For Duplex Systems, use with appropriate panel (See FM0712). For Simplex Systems, use with appropriate panel (See FM1228).

CAUTION

All installation of controls, protection devices and wiring should be done by a qualified licensed electrician. All electrical and safety codes should be followed including the most recent National Electrical Code (NEC) and the Occupational Safety and Health Act (OSHA).