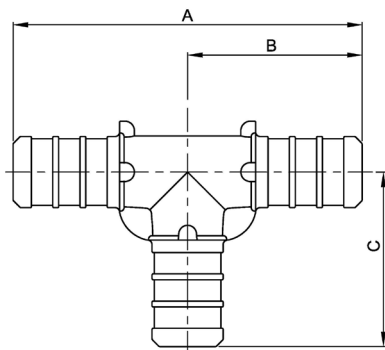


F2159 POLY PEX REDUCING TEE



- Simple and dependable plumbing connection
- Easy installation
- Leak-proof connections
- Polymer construction
- Manufactured of premium-grade resin with non-mixed blends
- Can be used with brass PEX crimp rings or stainless steel PEX clamps
- Certified to ASTM F2159-2014 and CSA B137.5-2013
- Certified to ASTM F877-2020 and CSA B137.5-2020
- Certified to NSF/ANSI 14-2015, NSF/ANSI 14-2016a, and NSF/ANSI 372-2011
- Certified to NSF/ANSI/CAN 61-2018
- cUPC listed

Part No.	Description	Color	A - in (mm)	B - in (mm)	C - in (mm)	Weight-lbs (grams)
C76764	1/2" x 1/2" x 3/4" F2159	Black	2.52 (64.00)	1.26 (32.00)	1.16 (29.50)	0.02 (8.30)
C76709	1/2" x 1/2" x 3/4" F2159	White	2.52 (64.00)	1.26 (32.00)	1.16 (29.50)	0.02 (8.30)
C76774	3/4" x 3/4" x 1" F2159	Black	2.32 (59.00)	1.16 (29.50)	1.53 (38.75)	0.03 (15.80)
C76711	3/4" x 1/2" x 3/4" F2159	White	2.52 (64.00)	1.26 (32.00)	1.26 (32.00)	0.02 (11.10)
C76765	3/4" x 1/2" x 1/2" F2159	Black	2.42 (61.50)	1.16 (29.50)	1.26 (32.00)	0.02 (9.20)
C76710	3/4" x 1/2" x 1/2" F2159	White	2.42 (61.50)	1.16 (29.50)	1.26 (32.00)	0.02 (9.20)
C76767	3/4" x 3/4" x 1/2" F2159	Black	2.32 (59.00)	1.16 (29.50)	1.20 (30.50)	0.02 (9.90)
C76712	3/4" x 3/4" x 1/2" F2159	White	2.32 (59.00)	1.16 (29.50)	1.20 (30.50)	0.02 (9.90)
C76766	3/4" x 1/2" x 3/4" F2159	Black	2.52 (64.00)	1.26 (32.00)	1.26 (32.00)	0.02 (11.10)
C76772	1" x 3/4" x 3/4" F2159	Black	2.68 (68.00)	1.34 (34.00)	1.33 (33.70)	0.04 (19.40)
C76776	1" x 3/4" x 1" F2159	Black	2.81 (71.50)	1.48 (37.50)	1.53 (38.75)	0.05 (23.00)
C76775	1" x 1" x 3/4" F2159	Black	2.68 (68.00)	1.34 (34.00)	1.33 (33.70)	0.05 (20.50)
C76770	1" x 1" x 1/2" F2159	Black	2.68 (68.00)	1.34 (34.00)	1.33 (33.70)	0.04 (19.00)

F2159 Specified Dimensions	ID - in (mm)	OD - in (mm)
1/2" End Connection	.37(9.30)	.47(11.98)
3/4" End Connection	.55(13.85)	.67(16.96)
1" End Connection	.72(18.22)	.86(21.74)