

FIGURE 558B Y-STRAINER



125# FLANGED 200 WOG CAST IRON Y-STRAINER

FEATURES

- 200 WOG non-shock (-20°F to 150°F)
- 125 psi WSP (125 psi at 450°F)
- Flat faced flanges
- Flanged ends comply to ANSI B16.1
- Perforated stainless steel screen:
 - 2" to 4" - 1/16" Holes
 - 5" to 12" - 1/8" Holes
- Blow-off plug included
- Test pressure: shell (Hydro) 300 psi per ANSI B16.1
- Markings per MSS SP-25
- Pre-drilled NPT ports for gauge installation



CV & WEIGHT

| SIZE | Cv | Wt. (Lbs) |
|-------|------|-----------|
| 2 | 62 | 26 |
| 2-1/2 | 98 | 35 |
| 3 | 155 | 42 |
| 4 | 269 | 66 |
| 5 | 364 | 115 |
| 6 | 585 | 146 |
| 8 | 942 | 258 |
| 10 | 1572 | 414 |
| 12 | 2261 | 580 |

FIGURE NUMBER MATRIX

| FNW | 558B | Size Code | Replacement Screens | Replacement Gaskets |
|-----|------|-----------|---------------------|---------------------|
| | | 2 = K | 2 = FNW558BSK | 2 = FNW558BGK |
| | | 2-1/2 = L | 2-1/2 = FNW558BSL | 2-1/2 = FNW558BGL |
| | | 3 = M | 3 = FNW558BSM | 3 = FNW558BGM |
| | | 4 = P | 4 = FNW558BSP | 4 = FNW558BGP |
| | | 5 = S | 5 = FNW558BSS | 5 = FNW558BGS |
| | | 6 = U | 6 = FNW558BSU | 6 = FNW558BGU |
| | | 8 = X | 8 = FNW558BSX | 8 = FNW558BGX |
| | | 10 = 10 | 10 = FNW558BS10 | 10 = FNW558BG10 |
| | | 12 = 12 | 12 = FNW558BS12 | 12 = FNW558BG12 |

DIMENSIONS (INCHES)

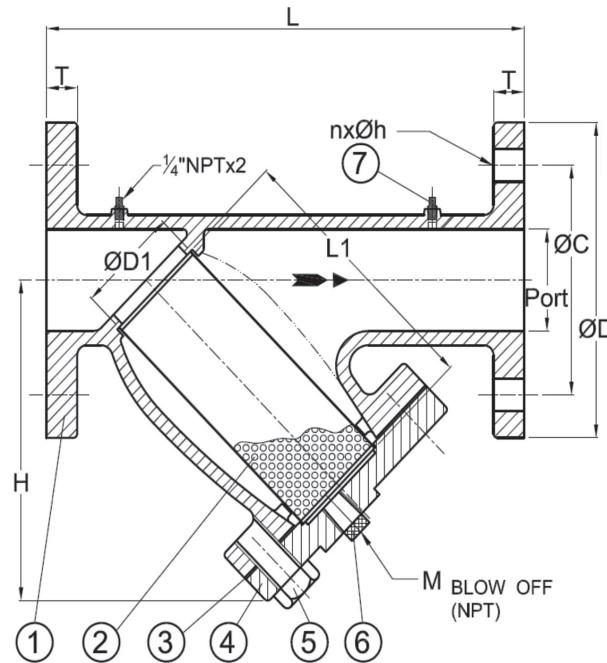
| SIZE | Port | H | L | L1 | C | D | D1 | T | M(NPT) | nxh |
|-------|-------|-------|-------|-------|-------|-------|-------|------|--------|-------|
| 2 | 2.00 | 6.19 | 9.88 | 5.31 | 4.75 | 6.00 | 2.11 | 0.62 | 1/2 | 4x3/4 |
| 2-1/2 | 2.50 | 7.63 | 11.25 | 6.50 | 5.50 | 7.00 | 2.69 | 0.69 | 1 | 4x3/4 |
| 3 | 3.00 | 8.25 | 12.50 | 7.09 | 6.00 | 7.50 | 3.28 | 0.75 | 1 | 4x3/4 |
| 4 | 4.00 | 10.06 | 14.88 | 9.02 | 7.50 | 9.00 | 4.08 | 0.94 | 1-1/4 | 8x3/4 |
| 5 | 5.00 | 12.50 | 17.94 | 11.73 | 8.50 | 10.00 | 5.06 | 0.94 | 1-1/4 | 8x7/8 |
| 6 | 6.00 | 14.31 | 20.38 | 13.63 | 9.50 | 11.00 | 5.84 | 1.00 | 1-1/2 | 8x7/8 |
| 8 | 8.00 | 17.38 | 24.13 | 16.73 | 11.75 | 13.50 | 7.81 | 1.12 | 2 | 8x7/8 |
| 10 | 10.00 | 20.88 | 29.56 | 20.20 | 14.25 | 16.00 | 9.63 | 1.19 | 2 | 12x1 |
| 12 | 12.00 | 23.56 | 33.75 | 22.88 | 17.00 | 19.00 | 11.59 | 1.25 | 2 | 12x1 |

FIGURE 558B Y-STRAINER



125# FLANGED 200 WOG CAST IRON Y-STRAINER

PARTS BREAKDOWN



PART MATERIALS & QUANTITY

| Ref # | Description | Material | Specification | Qty |
|-------|-----------------|-----------------|---------------|-------|
| 1 | Body | Cast Iron | ASTM A126-B | 1 |
| 2 | Screen | Stainless Steel | SUS 304 | 1 |
| 3 | Gasket | Non-Asbestos | | 1 |
| 4 | Cover | Cast Iron | ASTM A126-B | 1 |
| 5 | Hex Head Bolt | Steel | ASTM A307-A | 1 Set |
| 6 | Plug | Malleable Iron | ASTM A197-B | 1 |
| 7 | Plug (1/4" NPT) | Malleable Iron | ASTM A197-B | 2 |

STANDARD SCREENS SUPPLIED - SCREENS PERFORATION

| Size | | For Steam | | Open Area | For Liquid | | Open Area |
|--------|-----------|-----------|-----|-----------|------------|-----|-----------|
| In. | mm | In. | mm | | In. | mm | |
| 2 - 4 | 50 - 100 | 3/64 | 1.2 | 33% | 1/16 | 1.6 | 30% |
| 5 - 10 | 125 - 250 | 3/64 | 1.2 | 33% | 1/8 | 3.2 | 43% |
| 12 | 300 | 1/16 | 1.6 | 30% | 1/8 | 3.2 | 43% |

Standard screens supplied are for liquid service, unless otherwise specified.