

# FIGURE 651B CAST IRON VALVES



## 125# FLANGED 200 WOG IBBM GATE VALVE

### FEATURES

- 200 psi WOG non-shock (-20°F to 150°F)
- 125 psi WSP (125 psi at 450°F)
- Flat faced flanges
- Rising stem OS&Y
- Tapered solid wedge
- Body guide ribs
- Back seat stop

### PRODUCT SPECIFICATIONS

#### Standards

- Class 125 flanges: ANSI B16.1
- Pressure/temperature rating: MSS SP-70
- Face to face dimensions: ANSI B16.10
- Design and testing: MSS SP-70

### OPTIONS & ACCESSORIES

- FNW offers many options, accessories and for their iron body valves which include, but are not limited to: by-passes, packing options, stem extensions, floor stands, switches, and actuation such as pneumatic cylinders or electric operators, gear operators, and chain wheels.



### TEMPERATURE/PRESSURE\*

Temp (°F)	Pressure (PSI)
-20 to 150	200
200	190
225	180
250	175
275	170
300	165
325	155
350	150
375	145
400	140
425	130
450	125

*\*P/T listed is for 2" to 12", 200 WOG ASTM A126 Class B gray iron valves. Temperatures shown are that of the pressure containing parts of the valve and are assumed to be equal to the contained temperature. Use of a pressure rating at a pressure containing temperature other than the contained is at the responsibility of the end-user.*

### DIMENSIONS (INCHES)

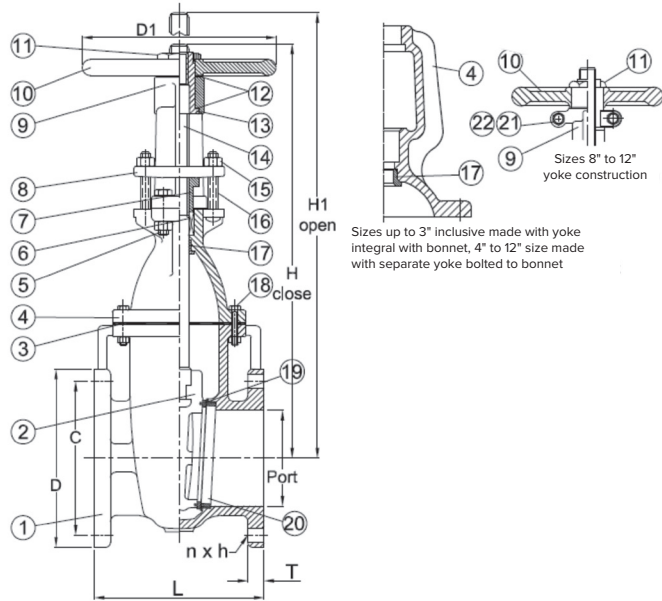
SIZE	Port	H1	H	L	C	D	D1	T	nxh
2	2.00	14.72	12.48	7.00	4.75	6.00	7.00	0.62	4x3/4
2-1/2	2.50	16.65	13.90	7.50	5.50	7.00	7.00	0.69	4x3/4
3	3.00	18.86	15.59	8.00	6.00	7.50	8.00	0.75	4x3/4
4	4.00	23.43	19.13	9.00	7.50	9.00	10.00	0.94	8x3/4
5	5.00	27.72	22.42	10.00	8.50	10.00	12.00	0.94	8x7/8
6	6.00	32.24	25.79	10.50	9.50	11.00	12.00	1.00	8x7/8
8	8.00	39.45	30.98	11.50	11.75	13.50	14.00	1.12	8x7/8
10	10.00	48.15	37.62	13.00	14.25	16.00	16.00	1.19	12x1
12	12.00	56.06	43.48	14.00	17.00	19.00	18.00	1.25	12x1

# FIGURE 651B CAST IRON VALVES



## 125# FLANGED 200 WOG IBBM GATE VALVE

### PARTS BREAKDOWN



### CV & WEIGHT

SIZE	Cv	Wt. (Lbs)
2	240	36
2-1/2	390	48
3	560	60
4	1000	103
5	1600	143
6	2400	186
8	4500	298
10	7000	441
12	10500	628

### FIGURE NUMBER MATRIX

FNW	651B	Size Code		
		2 = K	4 = P	8 = X
		2-1/2 = L	5 = S	10 = 10
		3 = M	6 = U	12 = 12

### PART MATERIALS & QUANTITY

Ref #	Description	Material	Specification	Qty	Notes
1	Body	Cast Iron	ASTM A126-B	1	
2	Disc	Cast Iron	ASTM A126-B	1	
3	Gasket	Non-Asbestos		1	
4	Bonnet	Cast Iron	ASTM A126-B	1	
5	Hex. Head Bolt	Steel	ASTM A307-A	1	
6	Packing	Graphite		3	4 on 6" - 12"
7	Gland	Cast Bronze	ASTM B62	1	
8	Gland Flange	Ductile Iron	ASTM A536	1	
9	Yoke	Cast Iron	ASTM A126-B	1	4" - 12"
10	Hand Wheel	Cast Iron	ASTM A126-B	1	
11	Wheel Nut	2 - 8 Steel 10/12 Ductile Iron	S45C ASTM A536	1 1	
12	Washer	Brass	ASTM B16	2	2" - 6"
13	Yoke Sleeve	Cast Bronze	ASTM B62	1	
14	Stem	Brass	ASTM B16	1	
15	Nut	Steel	ASTM A307-A	1 Set	
16	Square Head Bolt	Steel	ASTM A307-A	1 Set	
17	Bonnet Bush	Cast Bronze	ASTM B62	1	
18	Hex. Head Bolt	Steel	ASTM A307-A	1 Set	
19	Disc Seat Ring	Cast Bronze	ASTM B62	2	
20	Body Seat Ring	Cast Bronze	ASTM B62	2	
21	Yoke Bolt	Steel	ASTM A307-A	2	8" - 12"
22	Yoke Nut	Steel	ASTM A307-A	2	8" - 12"