

FIGURE 671B CAST IRON VALVES



125# FLANGED 200 WOG IBBM SWING CHECK VALVE

FEATURES

- 200 psi WOG non-shock (-20°F to 150°F)
- 125 psi WSP (125 psi at 450°F)
- Flat faced flanges
- Horizontal swing
- Horizontal installation or vertical with upward flow

PRODUCT SPECIFICATIONS

Standards

- Class 125 flanges: ANSI B16.1
- Pressure/temperature rating: MSS SP-71
- Face to face dimensions: ANSI B16.10
- Design and testing: MSS SP-71



CV & WEIGHT

SIZE	Cv	Wt. (Lbs)
2	45	25
2-1/2	75	36
3	110	46
4	210	81
5	345	115
6	530	150
8	1010	253
10	1580	442
12	2460	638

TEMPERATURE/PRESSURE*

Temp (°F)	Pressure (PSI)
-20 to 150	200
200	190
225	180
250	175
275	170
300	165
325	155
350	150
375	145
400	140
425	130
450	125

**P/T listed is for 2" to 12" 200 WOG ASTM A126 Class B gray iron valves. Temperatures shown are that of the pressure containing parts of the valve and are assumed to be equal to the contained fluid's temperature. Use of a pressure rating at a pressure containing temperature other than the contained fluid's is at the responsibility of the end-user.*

DIMENSIONS (INCHES)

SIZE	Port	H	L	C	D	T	nxh
2	2.00	4.65	8.00	4.75	6.00	0.62	4x3/4
2-1/2	2.50	5.37	8.50	5.50	7.00	0.69	4x3/4
3	3.00	5.77	9.50	6.00	7.50	0.75	4x3/4
4	4.00	6.65	11.50	7.50	9.00	0.94	8x3/4
5	5.00	7.78	13.00	8.50	10.00	0.94	8x3/4
6	6.00	8.47	14.00	9.50	11.00	1.00	8x3/4
8	8.00	10.40	19.50	11.75	13.50	1.12	8x3/4
10	10.00	11.91	24.50	14.25	16.00	1.19	12x1
12	12.00	13.52	27.50	17.00	19.00	1.25	12x1

FIGURE 671B CAST IRON VALVES



125# FLANGED 200 WOG IBBM SWING CHECK VALVE

PARTS BREAKDOWN

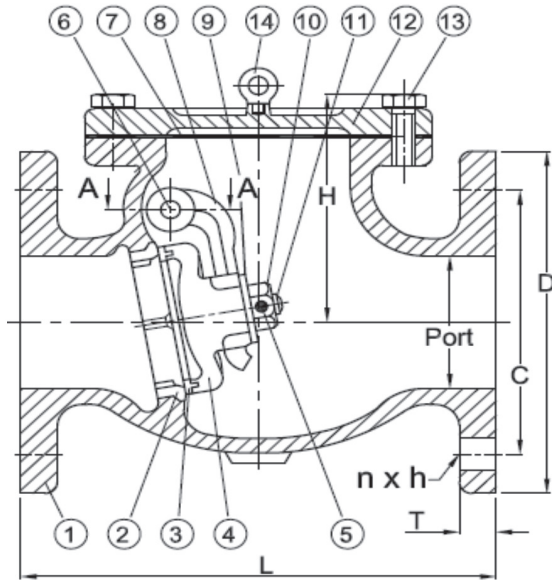


Fig. 671B

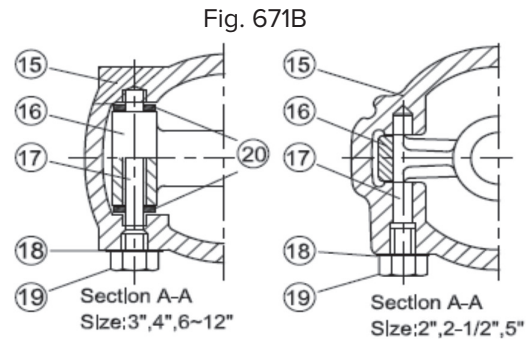


Fig. 671B

FIGURE NUMBER MATRIX

FNW	671B	Size Code		
		2 = K	4 = P	8 = X
		2-1/2 = L	5 = S	10 = 10
		3 = M	6 = U	12 = 12

PART MATERIALS & QUANTITY

Ref #	Description	Material	Specification	Qty	Notes
1	Body	Cast Iron	ASTM A126-B	1	
2	Body Seat Ring	Cast Bronze	ASTM B62	1	
3	Disc Seat	Cast Bronze	ASTM B62	1	
4	Disc Seat	Cast Iron	ASTM A126-B	1	2", 2-1/2", 5"
5	Split Pin	Ductile Iron	ASTM A536	1	3", 4", 6" - 12"
6	Hanger Pin	Stainless Steel	ASTM A276-304	1	
7	Gasket	Brass	ASTM B16	1	
8	Hanger	Non-Asbestors		1	
9	Hanger	Steel	ASTM A536	1	
10	Washer	Steel		1	
11	Nut	Steel	ASTM A307-A	1	
12	Full Thread Bolt	Steel	ASTM A307-A	1	2", 2-1/2", 5"
13	Cover	Cast Iron	ASTM A126-B	1	
14	Hex. Head Bolt	Steel	ASTM A307-A	1 Set	
15	Eye Bolt	Stainless Steel	ASTM A276-304	1	6" - 12"
16	Body	Cast Iron	ASTM A126-B	1	
17	Hanger	Ductile Iron	ASTM A536	1	
18	Hanger Pin	Brass	ASTM B16	1	
19	Gasket	Non-Asbestors		1	
20	Side Plug	Brass	ASTM B16	1	
20	Washer	Brass	ASTM B16	2	3", 4", 6" - 12"