

## SPECIFICATIONS

# FIGURE 7823

## STRUT ACCESSORIES



### COMBO NUT WASHER

#### FEATURES

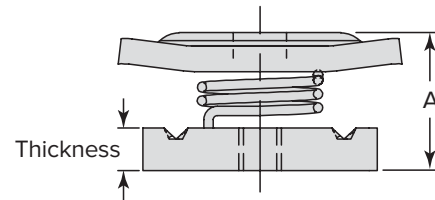
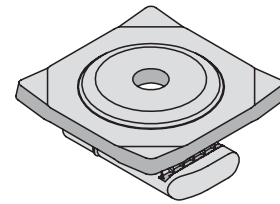
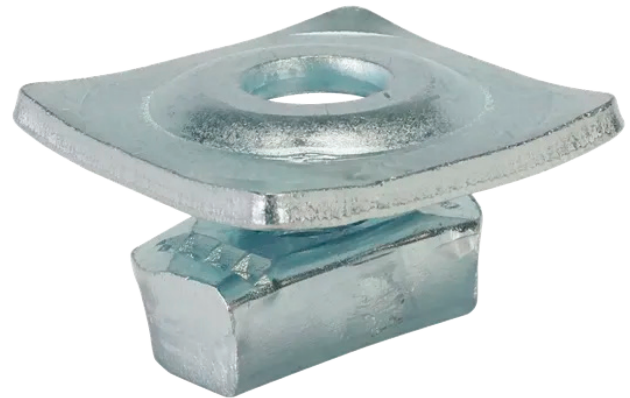
- Pre-assembled nut and washer
- Available in 1/4", 3/8" & 1/2"
- Reduces installation time
- Allows for easy adjustment

#### PRODUCT SPECIFICATIONS

##### Material Specifications and Finishes

Carbon Steel – ASTM A1011-00 SS GR 33 or ASTM A1011-00CS Type B

**Z:** Electro-Galvanized. Electroplating deposits zinc on the surface of the steel by electrolysis from a bath of zinc salts. Recommended for relatively dry indoor use. This is the standard coating for most FNW strut products. Thickness of applied zinc is between 0.2 mils to 0.5 mils [5.1 µm to 12.7 µm]. Coatings on FNW electro-galvanized products meet ASTM B633 SC1 Type III.



Catalog Number	Thread Size	Nut Thickness		A		Weight	
		in.	mm	in.	mm	lbs	kg
FNW7823Z0025	1/4"-20	0.37	9.4	0.81	20.6	0.120	0.054
FNW7823Z0037	3/8"-16	0.37	9.4	0.81	20.6	0.113	0.051
FNW7823Z0050	1/2"-13	0.50	12.7	0.91	23.1	0.130	0.059