

HIBISCUS

THERMOSTATIC SHOWER VALVE

SKU: 948558



FEATURES

- Material: Brass
- Shape: Square
- Handle Type: Lever
- Features: Thermostatic
- Assembly Required: No
- Installation Type: Wall
- Mounting Hardware Included: Yes
- Metal Handle
- For Proper Installation, Requires Use of Volume Control Valve and Trim
- Temperature Outlet Factory Preset to 104 Degrees Fahrenheit
- Temperature Can Be Easily Adjusted Up and Down to User's Comfort Level
- Scald Guard Protection
- High Temperature Limit Stop
- Thermostatic Technology Keeps Shower Temperature Within 1 Degree Celsius
- Optional Rough-in Valve

CONTENTS

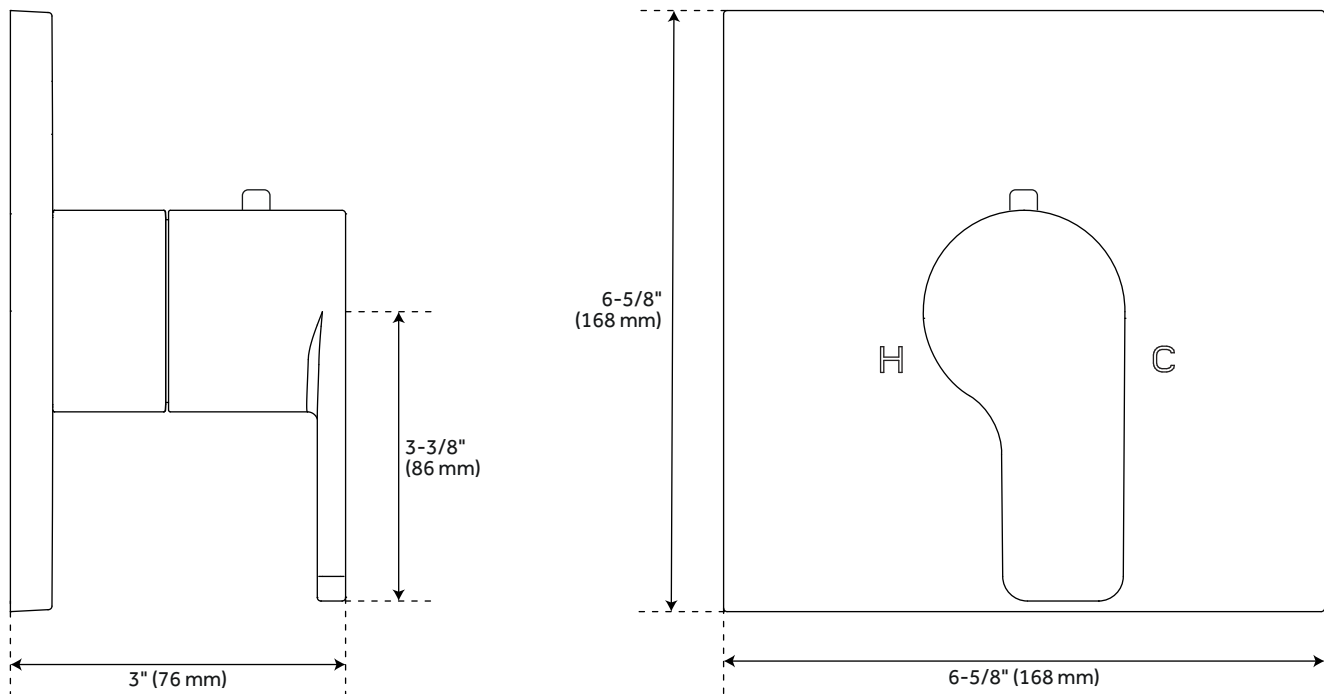
TRIM	PAGE 2
VALVE	PAGE 3

REVISED 10/05/2020

HIBISCUS

THERMOSTATIC SHOWER VALVE

SKU: 948558



FEATURES

Width: 6-5/8"
Height: 6-5/8"
Depth: 3"
Wall thickness range: 1" to 1-3/4"

CODES/STANDARDS

cUPC
ASME A112.18.1/CSA B125.1
Massachusetts Accepted

PRODUCT IMAGE



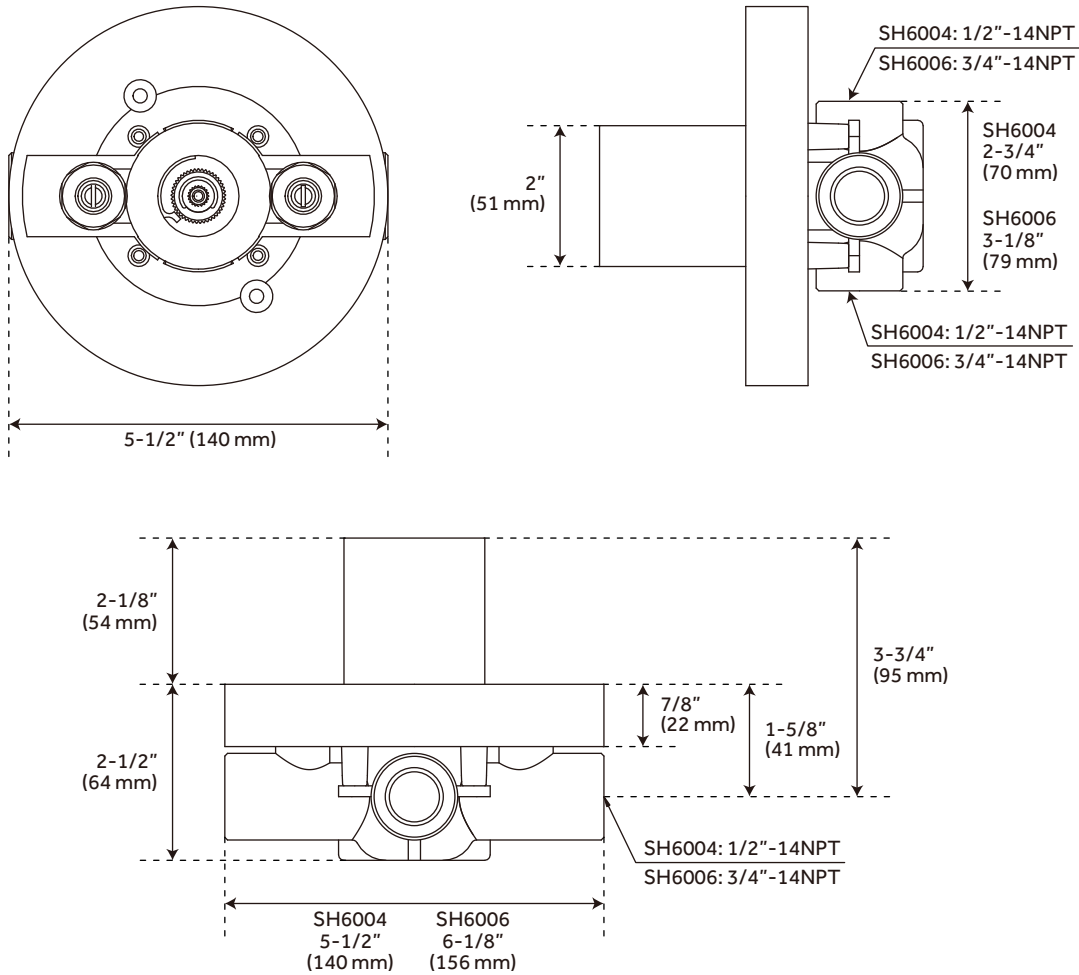
All dimensions and specifications are nominal and may vary. Use actual products for accuracy in critical situations.

PAGE 2
Code: SHHB9009

HIBISCUS

OPTIONAL THERMOSTATIC VALVE WITH 1/2" -OR- 3/4" CONNECTION

SKU: 948558



FEATURES

- Bronze Valve Body
- Ceramic Cartridge
- Integral Water Stops and Check Valve
- Recommended Valve Installation Depth 1-5/8" to 2-3/8"
- Must Be Installed in Accordance With Provided Installation Instructions

CODES/STANDARDS

- cUPC
- ASME A112.18.1/CSA B125.1
- ASSE 1016 Type T
- Massachusetts Accepted

PRODUCT IMAGE



All dimensions and specifications are nominal and may vary. Use actual products for accuracy in critical situations.

PAGE 3
Code: SH6004, SH6006