

BY/DATE	ECN NO.	REV.
DWC 9-21-83	39562	REL
DH 8-7-91	48624	A

LIST OF MATERIALS

QUANTITIES ARE FOR ONE VALVE

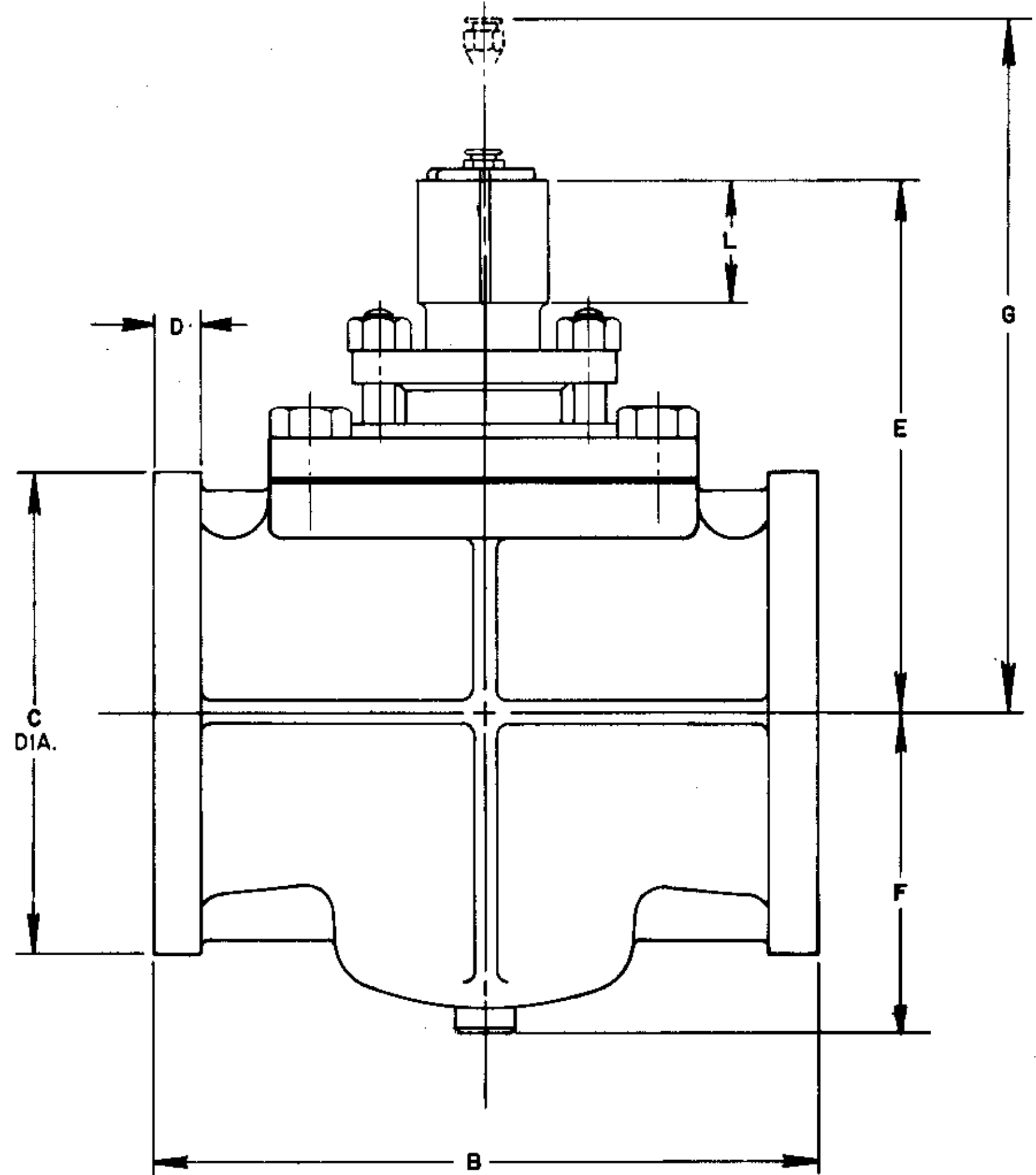
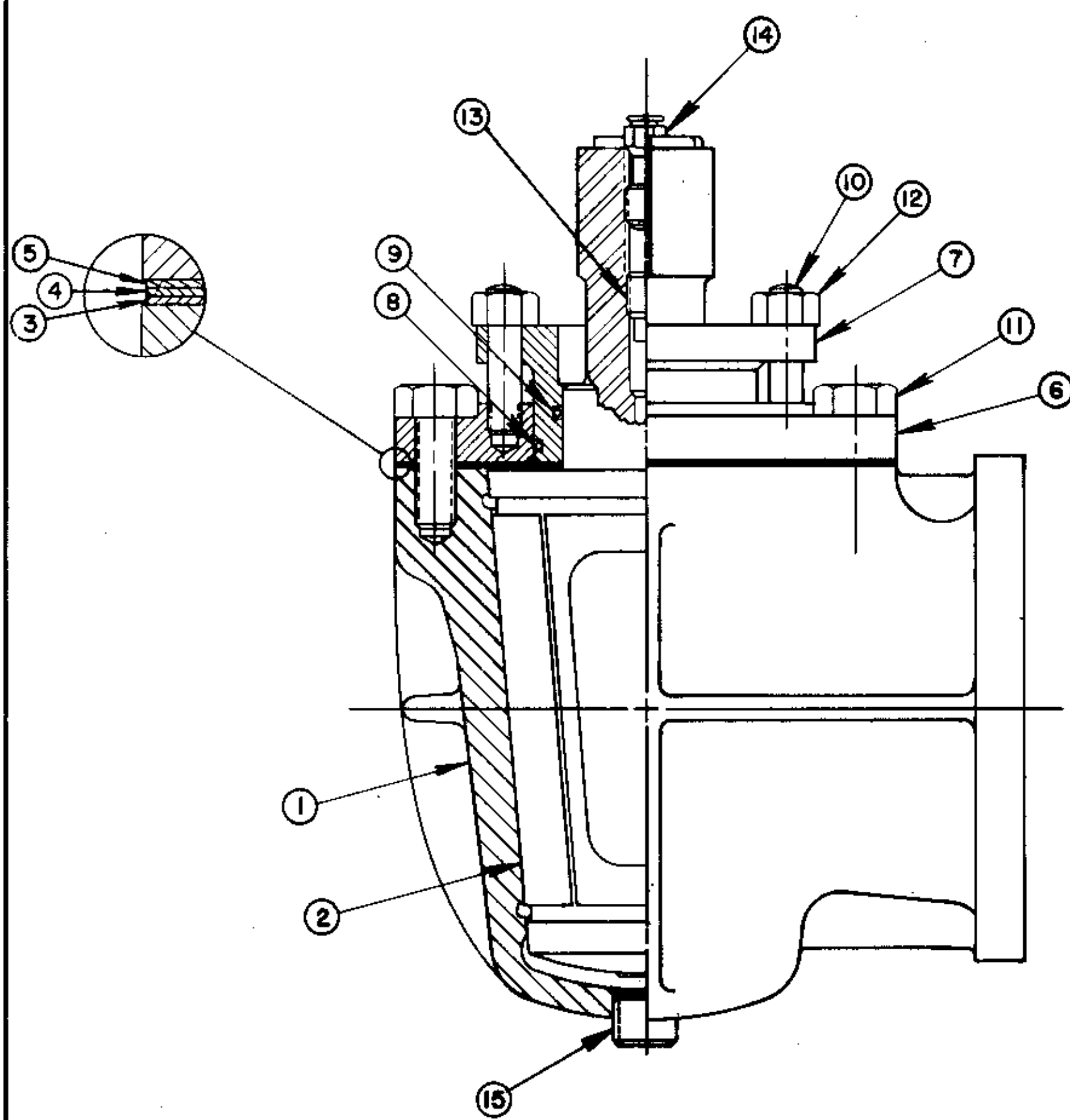
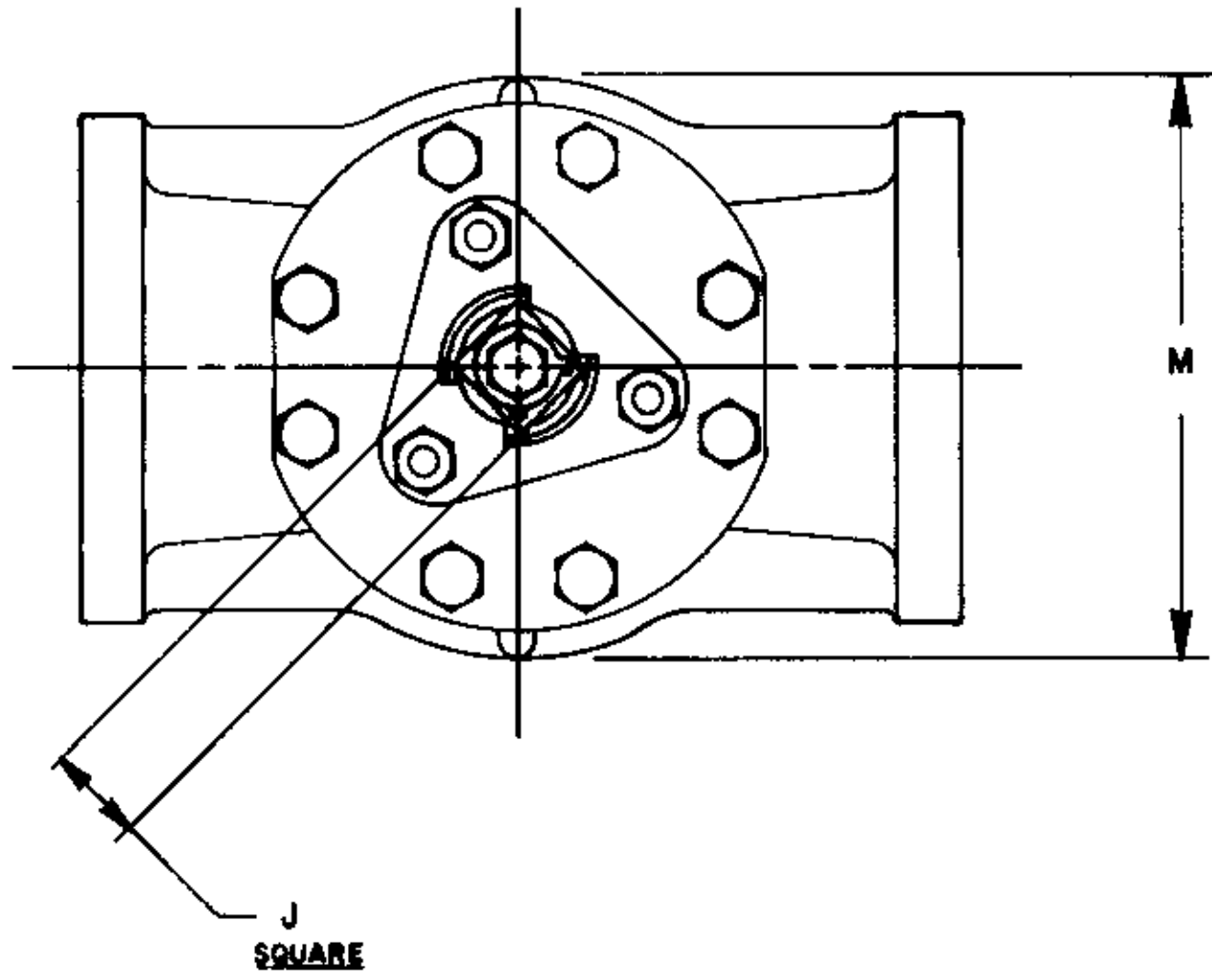
WHERE A.S.T.M. SPECIFICATIONS ARE INDICATED THE LATEST REVISION APPLIES

REF.	NAME	REQ'D.	MATERIAL	SPECIFICATIONS
1	BODY	1	CAST IRON	A126 GR. B
2	PLUG	1	CAST IRON	A126 GR. B
3	RING GASKET	1	ASBESTOS FREE	F104 F19400 M6
4	DIAPHRAGM	1	STAINLESS STEEL	A176 T 430
5	FULL GASKET	1	ASBESTOS FREE	F104 F19400 M6
* 6	COVER	1	CAST IRON	MALLEABLE OR DUCTILE
7	GLAND	1	CAST IRON	MALLEABLE OR DUCTILE
8	O-RING	1	BUNA-N	N674-70
9	O-RING	1	BUNA-N	N674-70
10	STUDS	3	ALLOY STEEL	A193 GR. B7
* 11	COVER CAPSCREWS	8	CARBON STEEL	A449 SAE GR. 5
12	NUTS	3	CARBON STEEL	A194 GR. 2H
13	CHECK VALVE	1	STEEL	
14	SEALANT FITTING	1	STEEL	
† 15	PIPE PLUG	1	CAST IRON	A126 GR. B

* (6) 8" AND 10" VALVE COVER MATERIAL IS CARBON STEEL SPECIFICATION A36

* (11) 10" VALVE HAS 10 CAPSCREWS

† (15) 10" VALVE ONLY



NOTES:

- 1. DIMENSION "G" IS CLEARANCE REQUIRED TO REMOVE SEALANT FITTING
- 2. FLANGES DRILLED TO ANSI CLASS 125 IRON FLANGE STANDARD B16.1

GENERAL DIMENSIONS

VALVE SIZE	B		C		D		E		F		G		J		L		M		WEIGHT	
	INCH	MM	INCH	MM	INCH	MM	INCH	MM	INCH	MM	INCH	MM	INCH	MM	INCH	MM	INCH	MM	LB	KG
8	11.50	292	13.5	343	1.19	30	11.9	302	7.1	180	16.9	429	2.00	51	2.0	51	11.00	279	230	104
10	13.00	330	16.0	406	1.25	32	14.2	361	9.2	234	19.2	488	2.00	51	2.1	53	13.00	330	356	161
6	10.50	267	11.0	279	1.06	27	9.6	243	5.4	138	13.6	346	1.75	44	1.8	44	8.9	226	137	62

61



ASSEMBLY DIMENSION DWG.
SIZE 6,8 & 10 WRENCH OPERATED
FIG. 143

DWG/DATE	DWC 9-21-83	DWG NO	D-103181
CHK'D DATE	GS 9-22-83	SH NO	
APVD/DATE	10-27-83	REV	