

# MODEL 350A and 350



Double Check – Backflow Preventers 350A (2-1/2" to 10") and 350 (4" to 12")

Repair Kit Components		2-1/2" - 4"						4"		6"				8"		8" - 12"			10"	12"		
Size Range	RK212-350-COVERPLATE	RK4-350	RK4-350CK1	RK4-350CK2	RK4-LBF-SEAL-RTNR	BRK4-LBF-SEATRTNR	BRK4-LBF-SEAT2RTNR	4-BK	RK6-350	RK6-350CK1	RK6-350CK2	BRK6-LBF-SEATRTNR	BRK6-LBF-SEAT2RTNR	6-BK	8-BK	RK8-350	RK8-350CK1	RK8-350CK2	RK8-350-COVERPLATE	10-BK	12-BK	
2-1/2"	•	•	•	•	•	•																
3"	•	•	•	•	•	•																
4"	•	•	•	•	•	•	•															
6"								•	•	•	•	•	•									
8"														•	•	•	•	•	•	•		
10"															•	•	•	•	•	•	•	
12"															•	•	•	•	•	•	•	
Item #	Item Description																					
1	Bolt, Flange							•(x16)						•(x16)	•(x16)						•(x24)	•(x24)
2	Nut, Flange							•(x16)						•(x16)	•(x16)						•(x24)	•(x24)
3	Gasket, Flange							•(x2)						•(x2)	•(x2)						•(x2)	•(x2)
4	O-Ring, Cover Plate	•																			•	
5	Cover Plate	•																			•	
6	Bolt, Cover Plate	•(x2)																			•(x2)	
7	Seat Retainer #1		•			•(x6)			•		•(x6)					•(x4)	•(x7)					
8	Seat Retainer #2			•		•(x12)				•(x2)		•(x12)										
9	O-Ring, Check		•(x2)	•	•				•(x2)	•	•				•(x2)							
10	Bolt, Poppet Retainer			•(x4)	•(x4)					•(x4)	•(x4)					•(x6)	•(x6)					
11	Handle, #1 Poppet Assembly			•						•												
12	Washer, Poppet Bolt			•(x4)	•(x4)					•(x4)	•(x4)					•(x6)	•(x6)					
13	O-Ring, Poppet Bolt		•(x8)	•(x4)	•(x4)	•(x4)			•(x8)	•(x4)	•(x4)				•(x12)	•(x6)	•(x6)					
14	Poppet Retainer			•	•	•				•	•					•	•					
15	Seal Ring		•(x2)	•	•			•(x2)	•	•					•(x2)							
16	Seat Assembly, #1 Poppet			•						•						•						
17	Seat Assembly, #2 Poppet				•					•							•					
18	Washer, Seat Retainer															•(x4)	•(x7)					

Whole Goods (Available for individual sale)									
Item #	Item Description	2-1/2"	3"	4"	6"	8"	10"	12"	
19	Gate Valve, NRS (FxF)	212-48	3-48	4-48	6-48	8-48	10-48	12-48	
	Gate Valve, NRS (GxG)	212-48G	3-48G	4-48G	6-48G	8-48G	10-48G	12-48G	
	Gate Valve, NRS (GxF)	212-48GXF	3-48GXF	4-48GXF	6-48GXF	8-48GXF	10-48GXF	12-48GXF	
	Gate Valve, OS&Y (FxF)	212-48OSY	3-48OSY	4-48OSY	6-48OSY	8-48OSY	10-48OSY	12-48OSY	
	Gate Valve, OS&Y (GxG)	212-48OSYG	3-48OSYG	4-48OSYG	6-48OSYG	8-48OSYG	10-48OSYG	12-48OSYG	
	Gate Valve, OS&Y (GxF)	212-48OSYGXF	3-48OSYGXF	4-48OSYGXF	6-48OSYGXF	8-48OSYGXF	10-48OSYGXF	12-48OSYGXF	
	Butterfly Valve (GxG)	212-49G	3-49G	4-49G	6-49G	8-49G	10-49G	12-49G	
	Butterfly Valve (GxF)	212-49GXF	3-49GXF	4-49GXF	6-49GXF	8-49GXF	10-49GXF	12-49GXF	
20	Ball Valve, FxF		12-850XL			34-850XL			
21	Ball Valve, MxF		12-850MXL			34-850MXL			
22	Cover Retainer Assembly		6-23			8-23		12-23	
23	Grooved Coupling	4X212-23	4X3-23	4-23	6-23	8-23	10-23	12-23	
24	Bulkhead Fittings			BHF1CXL-100			BHF2BXL-100		
25	Sensing Line Bulkhead Fittings			BHF1BXL-100			BHF2CXL-100		
26	Cover		RK4-LBF-VALVE-COVER		RK6-LBF-VALVE-COVER		RK8-LBF-VALVE-COVER		

Item No.	Repair Kit Description
	<b>2-1/2" - 4"</b>
RK212-350-COVERPLATE	Cover Plate Repair Kit, 2-1/2" - 4" 350A
RK4-350	Standard Repair Kit, 2-1/2" - 4" 350A
RK4-350CK1	#1 Check Assembly Repair Kit, 2-1/2" - 4" 350A
RK4-350CK2	#2 Check Assembly Repair Kit, 2-1/2" - 4" 350A
RK4-LBF-SEAL-RTNR	Poppet Retainer Repair Kit, 2-1/2" - 4" 350A
BRK4-LBF-SEATRTNR	Bulk #1 Seat Retainer Kit, 2-1/2" - 4" 350A
BRK4-LBF-SEAT2RTNR	Bulk #2 Seat Retainer Kit, 2-1/2" - 4" 350A
	<b>4"</b>
4-BK	Flanged Kit, 4"

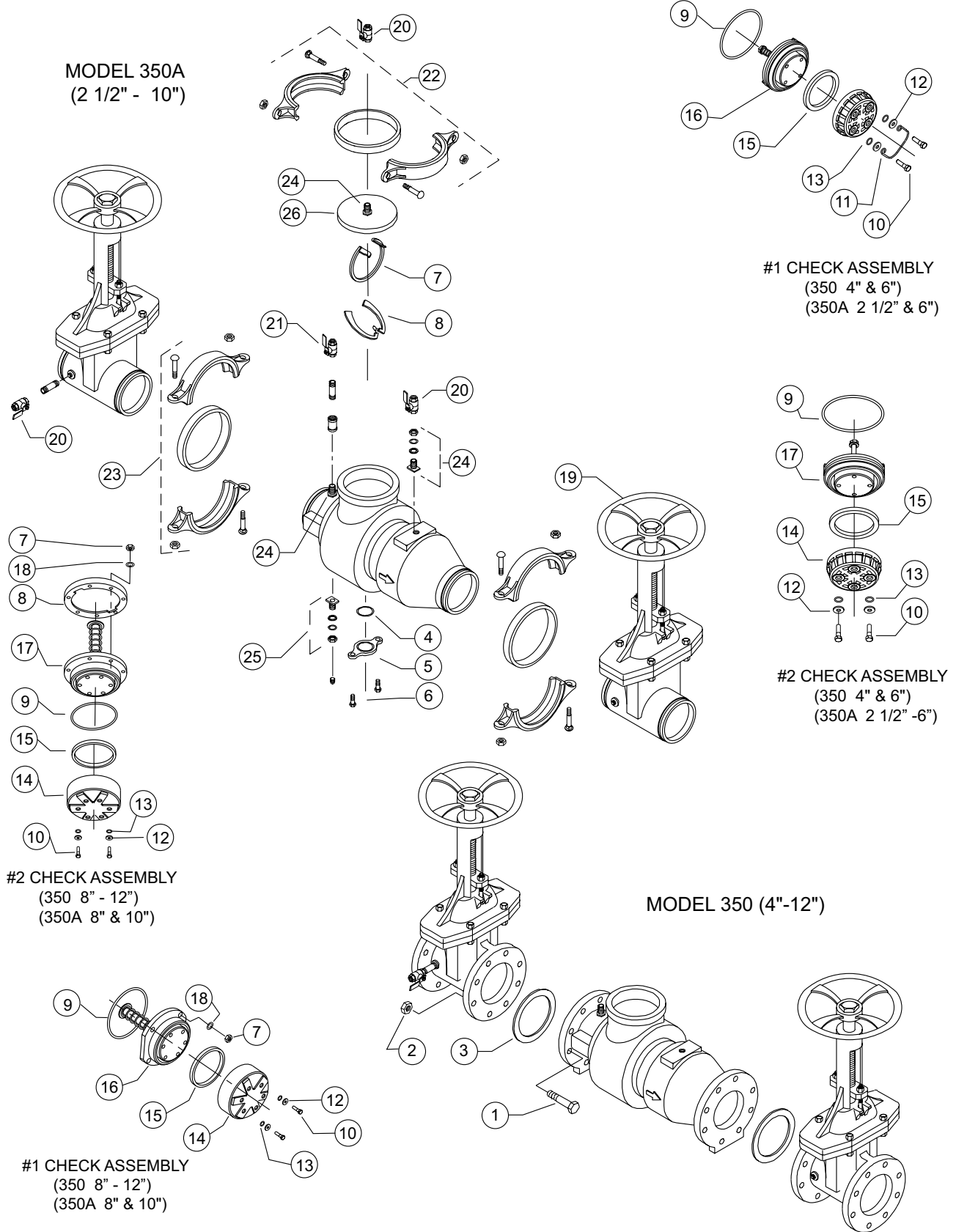
Item No.	Repair Kit Description
	<b>6"</b>
RK6-350	Standard Repair Kit, 6" 350A
RK6-350CK1	#1 Check Assembly Repair Kit, 6" 350A
RK6-350CK2	#2 Check Assembly Repair Kit, 6" 350A
BRK6-LBF-SEATRTNR	Bulk #1 Seat Retainer Kit, 6" 350A
BRK6-LBF-SEAT2RTNR	Bulk #2 Seat Retainer Kit, 6" 350A
6-BK	Flanged Kit, 6"
	<b>8"</b>
8-BK	Flanged Kit, 8"

Item No.	Repair Kit Description
	<b>8" - 12"</b>
RK8-350	Standard Repair Kit, 8" - 12" 350A
RK8-350CK1	#1 Check Assembly Repair Kit, 8" - 12" 350A
RK8-350CK2	#2 Check Assembly Repair Kit, 8" - 12" 350A
RK8-350-COVERPLATE	Cover Plate Repair Kit, 8" - 12" 350A
	<b>10"</b>
10-BK	Flanged Kit, 10"
	<b>12"</b>
12-BK	Flanged Kit, 12"

# MODEL 350A and 350

**Double Check** – Backflow Preventers 350A (2-1/2" to 10") and 350 (4" to 12")

*Parts Drawing*



MODEL 350A  
(2 1/2" - 10")

#1 CHECK ASSEMBLY  
(350 4" & 6")  
(350A 2 1/2" & 6")

#2 CHECK ASSEMBLY  
(350 8" - 12")  
(350A 8" & 10")

#2 CHECK ASSEMBLY  
(350 4" & 6")  
(350A 2 1/2" - 6")

MODEL 350 (4"-12")

#1 CHECK ASSEMBLY  
(350 8" - 12")  
(350A 8" & 10")