



MUNICIPAL WATER PRODUCT CATALOG



Oldcastle® Enclosure Solutions



UNDERSTANDING OUR PRODUCT BRANDS



CARSON®

A NAME YOU TRUST. DURABILITY YOU EXPECT.

Carson® high-density polyethylene (HDPE) enclosures deliver reliable, chemical and water resistant performance and install with ease. The Carson® brand offers a wide variety of sizes and is preferred and specified by industry professionals nationwide. You can depend on the trusted Carson® brand, delivering reliable hand holes, valve boxes, meter boxes and vaults for nearly 50 years.



CHRISTY®

RELIABLE AND COST-EFFECTIVE.

Christy® concrete enclosures deliver reliable, cost-effective performance. The Christy® brand offers a wide variety of sizes making it the preferred choice for many applications. You can depend on the trusted Christy® brand, delivering reliable hand holes, valve boxes, meter boxes and vaults to the utility market for over 40 years.



FIBRELYTE®

STRONG AND EASY TO HANDLE.

Fibrelyte® manufactured from an exclusive composite formulation of polyester resin, fiberglass and calcium carbonate yields lightweight, high strength enclosures. This proprietary composite material is stronger, easier to handle and much lighter than concrete, saving both time and money during installation, service work and transportation.



UNDERSTANDING OUR PRODUCT BRANDS



CARSON® HEAVYWALL

CUSTOMIZABLE AND AMR FRIENDLY.

Carson® Heavywall meter boxes are a lightweight alternative to concrete. Made using our Structural foam molding process and designed to exceed 20,000 lb. vertical load (20k); these boxes also providing the Best in Class lateral load rating of any plastic box on the market today. Extra wide shoulders beneath the lid seat as well as increased footer on the bottom provide the largest amount of anti-setting surface area of any meter box on the market today.



SYNERTECH®

EXCEPTIONAL STRENGTH AND DURABILITY.

Our SYNERTECH® brand of DUO MOLD® polymer boxes combine the exceptional strength and durability of High Density Polymer Concrete with the tough and lightweight qualities of Sheet Molding Compound to create exceptional equipment enclosures. Combining the two patented materials with a patented manufacturing process, our SYNERTECH® products represent the toughest and lightest underground enclosures on the market today. Sizes range from 11x18x12 to 36x60x72 with SCTE Tier 15 performance load rating.



H-SERIES™

DURABILITY DELIVERED THROUGH INNOVATION.

H-Series™ polymer concrete enclosures deliver strength and durability like traditional concrete, but at a fraction of the weight. The H-Series™ brand offers a broad range of sizes and configurations to meet your needs. These enclosures provide medium to heavy duty solutions for vaults, splice boxes and meter boxes ideal for any industry – municipal water, telecommunications, and other commercial and industrial applications.



SELECTING THE RIGHT PRODUCT AND ACCESSORIES

CHOOSE YOUR SIZE AND BRAND

A wide variety of sizes are offered in round, square, and rectangular configurations. Choose the size and brand that best fits your need.

KNOW YOUR REQUIRED PERFORMANCE LEVEL

Our bodies and lids are rated for performance. Look for the load rating that matches your project application.



SELECT A LID STYLE AND MARKING


Lids are available in a variety of materials and colors. Some are available with specialty markings, marking plates, and special locking options.

CHOOSE ACCESSORIES, HARDWARE, AND OTHER OPTIONS

Hardware & other additional items can be found for our enclosures in the back of this booklet.

PRODUCT AVAILABILITY

Oldcastle Enclosure Solutions divides products into two availability groups: Quick Ship and Made to Order.

The Oldcastle Enclosure Solutions Quick Ship Program is designed to provide customers with some of our most popular items quickly, supporting projects with tight schedules. Our Quick Ship items can be easily identified in this document by locating the items with this truck  next to them. Items that are identified as Quick Ship will be shipped from an Oldcastle facility within 3 business days.

Made to Order items are identified as all items that do not have the Quick Ship icon next to them. The lead time for these items can be obtained by reaching out to our customer service team.

ADDITIONAL INFORMATION

For Christy Brand and Fibrelyte Brand products, please see the latest Oldcastle Enclosure Solutions Christy Products Catalog.

For more detailed information on a product, see the individual specification sheet located in the Oldcastle Enclosure Solutions Catalog Binder or online at oldcastleenclosures.com

PERFORMANCE LEVEL AND LOAD RATINGS



LIGHT DUTY: PEDESTRIAN / GREENBELT APPLICATIONS

Pedestrian	-	-	300 lb/ft	-	ASTM C 857	A-0.3
Pedestrian	-	-	-	3000 lbf	ANSI/SCTE 77	Light Duty, Pedestrian
Pedestrian	-	-	850 lb	2200 lb	Telcordia GR-902	Greenway
Passenger Vehicle	6000	2400	2000lbf	4340 lbf	WUC, Guide 3.6	Ped.Greenway

MEDIUM DUTY: ANSI/SCTE TIER 5, 8, AND 15

Light Duty Truck up to Class 3	1400	5600	5000	7500	ANSI/SCTE 77	Tier 5
			8000	12000	Telcordia GR-902	Tier 8
			3900	10400		Pedestrian/Light Duty Incidental
Medium Duty Truck up to Class 5	19500	7800	7800	20800	Telcordia GR-902	Non-Continuous Traffic
			8000	17360	ASTM C 857	A-8
			8000	17360	WUC, Guide 3.6	Non-Continuous Traffic
Medium Duty Truck up to Class 7	33000	13200	15000	22500	ANSI/SCTE 77	Tier 15

HEAVY DUTY: ANSI/SCTE TIER 22

Heavy Duty Truck up to Class 8	40000	16000	16000	34720	ASTM C 857	A-16
			22500	33750	ANSI/SCTE 77	Tier 22
			16000	16000	WUC, Guide 3.6	In shoulder or parking area outside traffic lane

TRAFFIC RATED: AASHTO H20*

Vehicles up to Class 8	40000	16000	16000	34720	ASTM C 857	A-16
------------------------	-------	-------	-------	-------	------------	------

**Units must include a steel frame and steel cover.*

Load Ratings are determined by the lowest component rating

The Rural Utility Service (RUS) is a department of the US Department of Agriculture organized to facilitate rural developments. You will find Oldcastle Enclosure Solutions brand Enclosures listed by the RUS. Please reference brand specific product data sheets for additional clarifications. All Oldcastle Enclosure Solutions brand Enclosures conform to the RUS "Tamper Resistant" fastener design for buried pedestals found listed by code and group.

The "Test Load" term is used in ANSI/SCTE 77-2010 to designate the minimum load that an Enclosure must be able to sustain to qualify for a particular performance rating. The term is synonymous with (minimum) Failure Load. It should be noted that within the ANSI/SCTE 77-2010 specification, the "Test Load" is 1.5 x the Design Load. Some specification and Operating Companies select a higher multiple or Safety Factor for Proof of Design Load.

PRODUCT MATRIX BY BRAND

Select the appropriate size and shape for your application from our list of available products in each brand.

Brand	Material	Model	Size (LxW)	Shape	Wall Type	Depths	Design Load	Rating
CARSON®	HDPE	510	5" Dia	○	Flared ▤	9"	300 lb/ft²	Ped
		708	6" Dia	○		9"		
		809	7" Dia	○		9"		
		0011	10" Dia	○		10"		
		910	10" Dia	○		10" 18" 20" 36"		
		2200	12" Dia	○		15" 18" 21" 30" 36"		
		1012	10" x 12"	□		6" 10" 16"		
		1015	10" x 15"	□		6" 12"		
		1220	12" x 20"	□		6" 12" 18" 24"		
		1324	13" x 24"	□		12" 15" 24" 30"		
		1419	14" x 19"	□		6" 12" 24"		
		0012	14" x 20"	□		6" 12" 18"		
		1730	17" x 30"	□		12" 15" 18" 24" 36" 48"		
		2436	24" x 36"	□		18" 24" 30" 36" 42" 48" *		
CHRISTY®	Concrete	F08	8" Dia	○	Straight	12"	300 lb/ft²	Ped
		B03	9" x 14"	□		12"		
		B09	10" x 15"	□		12" 24" 36" 48" 60"		
		B12	12" x 18"	□		12" 24" 36" 48" 60"		
		B16	11" x 21"	□		12" 24" 36" 48" 60"		
		B24	18" x 19"	□		12" 24" 36" 48" 60"		
		N30	13" x 24"	□		12"		
		N36	17" x 30"	□		12"		
		N40	22" x 35"	□		12" 24" 36" 48" 60"		
		B65	15" x 27"	□		12" 24" 36" 48" 60"		
CARSON®	HDPE Hybrid	1324	13" x 24"	□	Flared ▤	12" 14" 15" 17"	8,000 lbf	Tier 8
		1730	17" x 30"	□		12" 15" 18" 24" 36"		
		2424	24" x 24"	□		18" 24" 30" 36" 42" 48" *		
		2436	24" x 36"	□		18" 24" 30" 36" 42" 48" *		
		2448	24" x 48"	□		18" 24" 30" 36" 42" 48" *		
		2460	24" x 60"	□		18" 24" 30" 36" 42" 48" *		
		3636	36" x 36"	□		18" 24" 30" 36" 42" 48" *		
		3648	36" x 48"	□		18" 24" 30" 36" 42" 48" *		
3660	36" x 60"	□	18" 24" 30" 36" 42" 48" *					
FIBRELYTE®	Composite	FL08	9" Dia	○	Straight	12" 18" 20" 24" 30"	8,000 lbf	Tier 8
		FL09	10" x 15"	□	Flared ▤	12"		
		FL12	11" x 18"	□	Straight	12"		
		FL30	13" x 24"	□	Flared ▤	12" 18" 20" 24"		
		FL36	17" x 30"	□		12" 18" 20" 24"		
DURAVULT FRP	Fiberglass Reinforced Polymer w/ Polymer Concrete Ring	1118	11" x 18"	□	Straight	12" 18"	Medium Duty	Tier 15
		1324	13" x 24"	□	Straight/Flared ▤	12" 18" 24"		
		1419	14" x 19"	□	Flared ▤	18" 24"		
		1730	17" x 30"	□	Straight/Flared ▤	12" 18" 24"		
		2424	24" x 24"	□	Straight	24"		
		2436	24" x 36"	□	Straight/Flared ▤	18" 24" 30" 36" 48"		
		3048	30" x 48"	□		18" 24" 30" 36" 48"		
		3060	30" x 60"	□	Straight	30" 36"		
		3660	36" x 60"	□		24" 30" 36"		
		4872	48" x 72"	□		36" 48"		
	4896	48" x 96"	□	48"				
	1000	10" Dia	○	Flared ▤	18"	Lt/Med Duty	T8 / T15	
	1800	18" Dia	○		36" 48"			
	2200	22" Dia	○		30"			
	2400	24" Dia	○		36"			Medium Duty
	2700	27" Dia	○		36" 48"	Lt/Med Duty	T8 / T15	
	3900	39" Dia	○		24" 36" 48" 72"	Medium Duty	Tier 15	
	4000	40" Dia	○		48"			
	5400	54" Dia	○		Straight			36" 46"

Blue - Stacked Body Units (Stacked body units are currently not rated.) Orange - Extension Units

*Models can be increased by 6" to a height you desire. **Tier 15 Design Load: 15,000 lbf Tier 22 Design Load: 22,500 lbf

PRODUCT MATRIX BY BRAND

Select the appropriate size and shape for your application from our list of available products in each brand.

Brand	Material	Model	Size (LxW)	Shape	Wall Type	Depths	Design Load	Rating
SYNERTECH®	Composite	Duo 11x18	11" x 18"	□	Straight	12" 18" 24" 30" 36"	15,000 lbf	Tier 15
		Duo 12x12	12" x 12"	□		12" 18" 24" 30" 36"		
		Duo 13x24	13" x 24"	□		12" 18" 24" 30" 36" 42"		
		Duo 17x30	17" x 30"	□		12" 18" 24" 30" 36" 42"		
		Duo 24x36	24" x 36"	□		18" 24" 36" 42" 48" 60"	22,500 lbf	Tier 22
		Duo 30x48	30" x 48"	□		18" 24" 36" 42" 48" 60"		
		Duo 36x60	36" x 60"	□		24" 36" 48" 60" 72"		
H-SERIES™	Polymer	910	9" Dia	○	Flared ▤	10"	**	T15 / 22
		1118	11" x 18"	□	Straight	12" 18" 24"		
		1212	12" x 12"	□		12" 24" 36"	8,000	T8
		1324	13" x 24"	□	Straight/Flared ▤	12" 15" 18" 24" 30"	**	T15 / 22
		1730	17" x 30"	□	Straight/Flared ▤	12" 18" 24" 30" 36"	**	T15 / 22
		2424	24" x 24"	□	Straight	24" 36" 48" 60"	**	Tier 15 / 22
		2436	24" x 36"	□		18" 24" 36" 42"		
		3048	30" x 48"	□		18" 24" 36" 42" 48"		
		3060	30" x 60"	□		24" 30" 36" 48"		
		3636	36" x 36"	□		36" 48" 72" 84" 96"		
4848	48" x 48"	□	36" 48" 72" 84" 96"					
CHRISTY®	Concrete	G03	10" Dia	○		Straight		
		G04	11" Tri	○	12"			
		G05	11" Dia	○	12" 24" 36"			
		G08	11" Dia	○	12" 24" 36"			
		G12	13" Dia	○	12"			
		B1017	10" x 17"	□	12" 24" 36"			
		B1324	13" x 24"	□	12" 24" 36"			
		B1730	17" x 30"	□	12" 24" 36"			
		B2436	24" x 36"	□	12" 24" 36"			
B3048	30" x 48"	□	12" 24" 36"					
CARSON®	Polyethylene	0015	15" Dia	○	Straight	14" 18" 24" 30" 36" 48"	20K	N/A
		0018	18" Dia	○		14" 18" 24" 30" 36" 48" 60"		
		0020	20" Dia	○		14" 20" 24" 30" 36" 42" 44" 48" 64" 72"		
		0021	21" Dia	○		36" 48"		
		0024	24" Dia	○		18" 24" 30" 36" 48" 55"		
		0030	30" Dia	○		18" 24" 30" 36" 40" 51"		
		0036	36" Dia	○		24" 30" 36" 48"		
		0018 Ext	18" Dia	○		3" 6" 12" 22"		
		0020 Ext	20" Dia	○		2" 3" 4" 6" 7" 8" 12" 15" 22"		
		0024 Ext	24" Dia	○		3" 12"		
		0030 Ext	30" Dia	○		3"		
		0036 Ext	36" Dia	○		3"		
		1015	10" x 15"	□	Straight/Flared ▤	12" 18" 24"		
		1118	11" x 18"	□	Straight/Flared ▤	12" 15" 18" 21" 24" 26"		
		1324	13" x 24"	□	Straight/Flared ▤	12" 18"		
		1416	14" x 16"	□	Straight	12"		
		1527	15" x 27"	□		12" 18" 36"		
		1730	17" x 30"	□		Straight/Flared ▤	12" 18" 24" 30"	

Blue - Stacked Body Units (Stacked body units are currently not rated.) Orange - Extension Units

*Models can be increased by 6" to a height you desire. **Tier 15 Design Load: 15,000 lbf Tier 22 Design Load: 22,500 lbf

LID STYLE AND MARKINGS

HDPE



CONCRETE



COMPOSITE



POLYMER



STEEL



STANDARD MARKINGS

Lids are available with standard markings:

Blank/No Mark

Reclaimed Water Do Not Drink

Water

Water Meter

Sewer

Clean Out



MARKING PLATE

4" x 8" Plate

Standard markings include two lines of one inch text with a max of thirteen characters per line.

Custom markings are available.

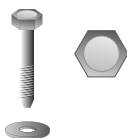
Contact Customer Service for detailed information.

SECURITY, HARDWARE, AND ACCESSORIES

Enclosures come equipped with standard lid fastening hardware (varies per box type). Standard assembly is shown below.



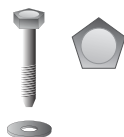
🔒 STANDARD HEX HEAD:
3/8 - 1/2 Stainless Steel Hex Head Bolt with Washer



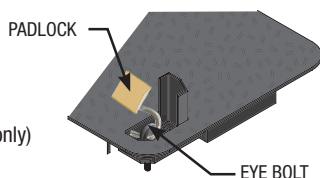
🔒🔒 DROP-N-LOCK™:
Automatic locking system (available on select HDPE covers only)



🔒🔒 STANDARD PENTA HEAD:
3/8 - 1/2 Stainless Penta Head Bolt with Washer



🔒🔒🔒 PADLOCK & EYE:
Eye bolt and padlock (available on steel covers only)



🔒🔒🔒 VANDAL PROOF:
Oldcastle Enclosures Vandal Proof bolt with specialty key.



Security Level

Typical Tool

🔒 Low	Fingers, Car Key, Pen Knife
🔒🔒 Medium	Screwdriver, Hammer, Hacksaw, Pliers
🔒🔒🔒 High	Power Tools, Crowbar, Wedge, Hammer
🔒🔒🔒🔒 Extreme	Sledge Hammer, Disc Grinder, Bolt Cutter

A. Rack Mount

B. Cable Racks/ Cable Arms

C. Unistrut

D. Pulling Eye - 1,000 lb. and 3,000 lb

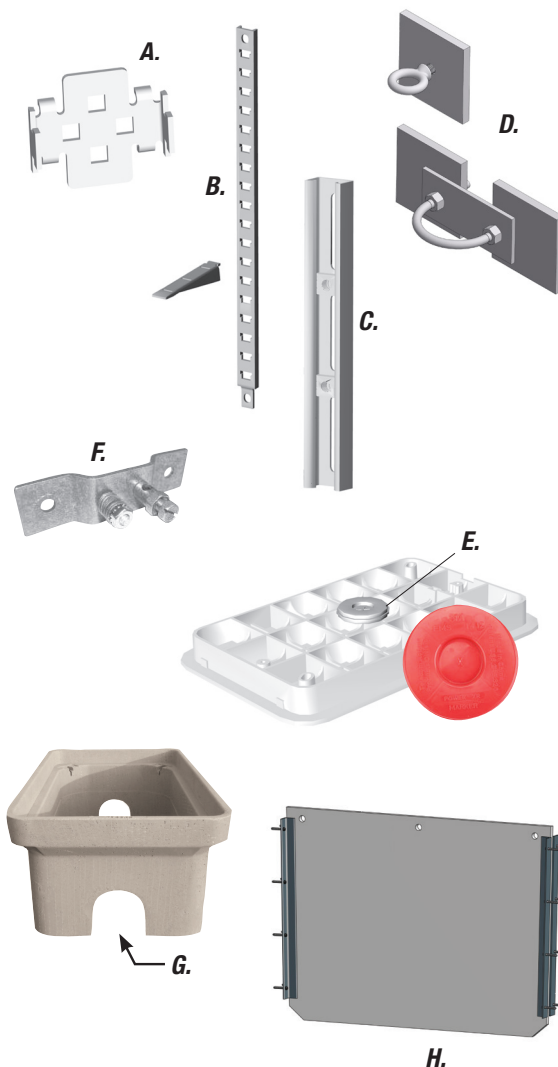
E. Electronic Marker

F. Ground Buss

G. Mouseholes / Circular Holes

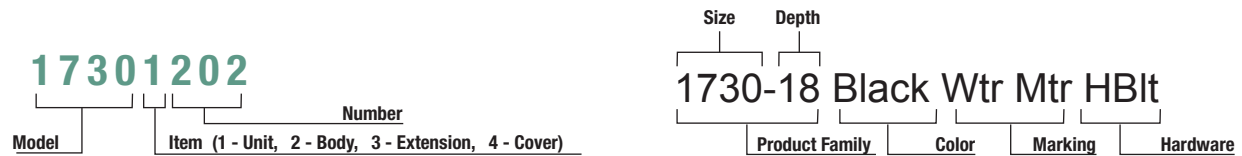
H. Dividers

I. Solid Bottom (H-Series and Synertech)

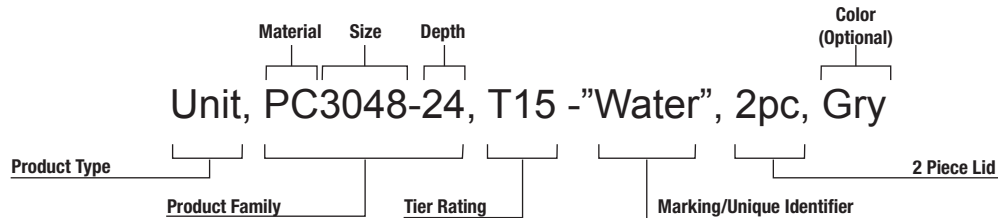


UNDERSTANDING OUR PRODUCT GUIDE

CARSON PRODUCTS: SKU FORMAT AND DESCRIPTION FORMAT



H-SERIES & SYNERTECH: DESCRIPTION FORMAT



CARSON ABBREVIATIONS

Abbreviation	Description	Refers to:
HP	HDPE Body Polymer Ring & Cover	Product Material
HPC	Plastic Body Polymer Concrete Cover	
HLPC	Plastic Body Light Weight Polymer Concrete Cover	
PC	Polymer Concrete	
PPC	Polymer Concrete Body Polymer Concrete Cover	
PSC	Polymer Concrete Body Steel Cover	Product Color
Blk	Black	
Blk-Grn	Black Body Green Cover	
Grn	Green	
Gry	Gray	
Pur	Purple	Marking
Tan	Tan	
Blank	Blank	
Elec	Electric	
ICV	Irrigation Control Valve	
Swr	Sewer	
Wtr	Water	
Wtr Mtr	Water Meter	
RW	Reclaimed Water	
RWDND ES	Reclaimed Water Do Not Drink English & Spanish	

Abbreviation	Description	Refers to:
CHBlt	Captive Hex Bolt	Hardware Type
CLPnta	Captive Large Penta Bolt	
Cpnta	Captive Penta Bolt	
Dlock	Dallas Lock	
Flick	Fargo Lock	
FtnNut	Floating Nut	
HBlt	Hex Bolt	
Hnut	Hex Nut	
Bnut	Brass Nut	
LBlt	L Bolt	
Lpnta	Large Penta Bolt	Cover Type/Options
CI T Cover	Cast Iron T Cover	
Cast Iron Rdr	Cast Iron Reader	
Fish Cvr	Flush Cover	
Plastic Rdr	Plastic Reader	
Plt Mkr	Plate Marker	
Rnd Plt	Round Plate	
T Cov	T Cover	
EMS	E Marker	
TRH	Touch Read Hole	
MsHl	Mouse Hole	

H-SERIES ABBREVIATIONS

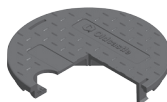
Abbreviation	Description	Refers to:
D	Drop In Lid	Lids
T	Bolt Down Lid	
FW	Flared Wall Body	Bodies
SW	Straight Wall Body	

LINE ITEM DISCOUNT CHART

Line Item Discount	Product Group	Line Item Discount	Product Group
OC01	Concrete	OC07	MD - SMC/HY
OC02	Drainage	OC08	Other
OC03	HD - Polymer	OC09	Resale
OC04	Heavy Wall	OC10	Synertech
OC06	LD - Plastic	OC11	Fibrelyte
		OC12	HVAC



**LIGHT DUTY
PEDESTRIAN / GREENBELT**



Snap-On

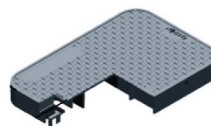


Twist-On
Accommodates
Optional Bolt Down

Rating	Part #	Desc 1	Desc 2	Color	Depth	Item Weight	Pallet Qty	Line Item Discount	Design Load	Quick Ship
Unit - 0708 TrussT										
Ped	07081103	708-09 Blk-Grn Sewer	2 MsHI T Cover Twist Lock	Blk-Grn	9	1.0	540	OC06	300 lb/ft2	
Ped	07081108	708-09 Purple RW	2 MsHI T Cover Twist Lock	Purple	9	1.0	540	OC06	300 lb/ft2	
Ped	07081133	708-09 Blk-Grn Sewer	2 MsHI T Cover Snap Lock	Blk-Grn	9	1.0	540	OC06	300 lb/ft2	
Ped	07081138	708-09 Purple RW	2 MsHI T Cover Snap Lock	Purple	9	1.0	540	OC06	300 lb/ft2	
Body - 0708 TrussT features removable bolt provision										
Ped	07082101	708-09 Body Black 2 MsHI	-	Black	9	0.8	540	OC06	300 lb/ft2	
Ped	07082103	708-09 Body Purple 2 MsHI	-	Purple	9	0.8	540	OC06	300 lb/ft2	
Lid - 0708 TrussT										
Ped	07084123	708 T Cover Black Blank	Twist Lock	Black	-	0.2	600	OC06	300 lb/ft2	
Ped	07084126	708 T Cover Green Sewer	Twist Lock	Green	-	0.2	600	OC06	300 lb/ft2	
Ped	07084119	708 T Cover Purple RW	Twist Lock	Purple	-	0.2	600	OC06	300 lb/ft2	
Ped	07084143	708 T Cover Black Blank	Snap Lock	Black	-	0.2	600	OC06	300 lb/ft2	
Ped	07084146	708 T Cover Green Sewer	Snap Lock	Green	-	0.2	600	OC06	300 lb/ft2	
Ped	07084139	708 T Cover Purple RW	Snap Lock	Purple	-	0.2	600	OC06	300 lb/ft2	



**LIGHT DUTY
PEDESTRIAN / GREENBELT**



Rating	Part #	Desc 1	Desc 2	Color	Depth	Item Weight	Pallet Qty	Line Item Discount	Design Load	Quick Ship
Unit - 1015 TrussT										
Ped	10151032	1015-12 Black Wtr Mtr	2 6 MsHI Fish Cover	Black	12	7.4	84	OC06	300 lb/ft2	
Ped	10151033	1015-12 Black Wtr Mtr	2 6 MsHI FCvr Cast Iron Reader	Black	12	9.2	84	OC06	300 lb/ft2	
Ped	10151034	1015-12 Black Wtr Mtr	2 6 MsHI FCvr Plastic Reader	Black	12	7.6	84	OC06	300 lb/ft2	
Ped	10151093	1015-12 Black Wtr Mtr	2 6 MsHI Hinged Cover	Black	12	8.2	84	OC06	300 lb/ft2	
Ped	10151094	1015-12 Blk-Blu Wtr Mtr	2 6 MsHI Hinged Cover	Blk-Blu	12	8.2	84	OC06	300 lb/ft2	
Body - 1015 TrussT										
Ped	10152026	1015-12 Body Black 2 MsHI	4 Knock Outs	Black	12	5.6	84	OC06	300 lb/ft2	
Ped	10152030	1015-12 Body Purple 2 MsHI	4 Knock Outs	Purple	12	5.6	84	OC06	300 lb/ft2	
Extension - 1015 TrussT										
Ped	10153010	1015-07 Body/ 6x Ext Black	-	Black	7	3.5	78	OC06	300 lb/ft2	
Lid - 1015 TrussT										
Ped	10154017	1015 Fish Cover Black Wtr Mtr	-	Black	-	1.9	200	OC06	300 lb/ft2	
Ped	10154018	1015 Fish Cover Black Wtr Mtr	Cast Iron Reader	Black	-	3.7	200	OC06	300 lb/ft2	
Ped	10154019	1015 Fish Cover Black Wtr Mtr	Plastic Reader	Black	-	2.0	200	OC06	300 lb/ft2	
Ped	10154010	1015 Fish Cover Purple RW	-	Purple	-	2.0	200	OC06	300 lb/ft2	

CARSON 0910

HDPE

10" DIAMETER

0910 & 0012

CARSON



LIGHT DUTY
PEDESTRIAN / GREENBELT



Rating	Part #	Desc 1	Desc 2	Color	Depth	Item Weight	Pallet Qty	Line Item Discount	Design Load	Quick Ship
Unit - 0910 Spec Grade										
Ped	09101002	910-10 Green Sewer	0 MsHI T Cover	Green	10	3.9	99	OC06	300 lb/ft2	
Ped	09101026	910-10 Green Blank	2 MsHI T Cover	Green	10	3.9	99	OC06	300 lb/ft2	
Ped	09101179	910-10 Black Wtr Mtr	2 MsHI T Cover	Black	10	3.9	99	OC06	300 lb/ft2	
Ped	09101180	910-10 Black Wtr Mtr HBIt	2 MsHI T Cover	Black	10	3.9	99	OC06	300 lb/ft2	
Body - 0910 Spec Grade										
Ped	09102001	910-10 Body Green 0 MsHI	-	Green	10	2.7	99	OC06	300 lb/ft2	
Ped	09102006	910-10 Body Green 2 MsHI	-	Green	10	2.7	99	OC06	300 lb/ft2	
Ped	09102007	910-10 Body Black 2 MsHI	-	Black	10	2.7	99	OC06	300 lb/ft2	
Ped	09102008	910-10 Body Purple 2 MsHI	-	Purple	10	2.7	99	OC06	300 lb/ft2	
Ped	09102017	910-10 Body Tan 2 MsHI	-	Tan	10	2.7	99	OC06	300 lb/ft2	
Ped	09102018	910-18 Body Black 0 MsHI	-	Black	18	5.1	99	OC06	300 lb/ft2	
Lid - 0910 Spec Grade										
Ped	09104003	910 T Cover Green Sewer	-	Green	-	1.2	250	OC06	300 lb/ft2	
Ped	09104007	910 T Cover Green Blank	-	Green	-	1.2	250	OC06	300 lb/ft2	
Ped	09104111	910 T Cover Black Wtr Mtr	-	Black	-	1.2	250	OC06	300 lb/ft2	
Ped	09104014	910 T Cover Tan Blank	-	Tan	-	1.2	250	OC06	300 lb/ft2	
Ped	09104015	910 T Cover Purple RW	-	Purple	-	1.2	250	OC06	300 lb/ft2	

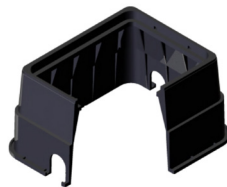
CARSON 0012

HDPE

15" X 19"



LIGHT DUTY
PEDESTRIAN / GREENBELT



Rating	Part #	Desc 1	Desc 2	Color	Depth	Item Weight	Pallet Qty	Line Item Discount	Design Load	Quick Ship
Unit - 0012 TrussT										
Ped	00121010	012-12 Black Wtr Mtr	2 MsHI Fish Cover	Black	12	14.2	28	OC06	300 lb/ft2	
Ped	00121011	012-12 Black Wtr Mtr	2 MsHI FCvr Cast Iron Reader	Black	12	15.6	28	OC06	300 lb/ft2	
Ped	00121012	012-12 Black Wtr Mtr	2 MsHI FCvr Plastic Reader	Black	12	14.0	28	OC06	300 lb/ft2	
Ped	00121013	012-12 Black Wtr Mtr	3 MsHI Fish Cover	Black	12	14.2	28	OC06	300 lb/ft2	
Ped	00121014	012-12 Black Wtr Mtr	3 MsHI FCvr Cast Iron Reader	Black	12	15.6	28	OC06	300 lb/ft2	
Ped	00121024	012-12 Purple RW	3 MsHI FCvr Cast Iron Reader	Purple	12	15.6	28	OC06	300 lb/ft2	
Ped	00121026	012-12 Blue Wtr Mtr	3 MsHI FCvr Cast Iron Reader	Black	12	15.6	28	OC06	300 lb/ft2	
Body - 0012 TrussT										
Ped	00122008	012-12 Body Black 2 MsHI	-	Black	12	9.6	28	OC06	300 lb/ft2	
Ped	00122009	012-12 Body Black 3 MsHI	-	Black	12	9.6	28	OC06	300 lb/ft2	
Ped	00122011	012-12 Body Purple 3 MsHI	-	Purple	12	9.6	28	OC06	300 lb/ft2	
Extension - 0012 TrussT										
Ped	00123002	012-6 Ext Black	-	Black	6	9.6	32	OC06	300 lb/ft2	
Lid - 0012 TrussT										
Ped	00124006	012 Fish Cover Black Wtr Mtr	-	Black	-	4.7	120	OC06	300 lb/ft2	
Ped	00124007	012 Fish Cover Black Wtr Mtr	Plastic Reader	Black	-	4.4	120	OC06	300 lb/ft2	
Ped	00124008	012 Fish Cover Black Wtr Mtr	Cast Iron Reader	Black	-	6.1	120	OC06	300 lb/ft2	
Ped	00124018	012 Fish Cover Purple Wtr Mtr	Cast Iron Reader	Purple	-	6.1	120	OC06	300 lb/ft2	
Ped	00124026	012 Fish Cover Blue Wtr Mtr	Cast Iron Reader	Blue	-	6.1	120	OC06	300 lb/ft2	

*Products are rated by the lowest component rating. A tier 15 cover with a tier 22 body is rated tier 15. A tier 22 cover with a tier 22 body is rated tier 22.



**LIGHT DUTY
PEDESTRIAN / GREENBELT**



Rating	Part #	Desc 1	Desc 2	Color	Depth	Item Weight	Pallet Qty	Line Item Discount	Design Load	Quick Ship
Unit - 1017 Spec Grade										
Ped	10171001	1017-12 Black Wtr Mtr	2 MsHI Fish Cover	Black	12	12.0	60	OC06	300 lb/ft2	
Ped	10171002	1017-12 Black Wtr Mtr	2 MsHI FCvr Cast Iron Reader	Black	12	12.0	60	OC06	300 lb/ft2	
Ped	10171003	1017-12 Black Wtr Mtr	2 MsHI FCvr Plastic Reader	Black	12	12.0	60	OC06	300 lb/ft2	
Ped	10171005	1017-12 Green Wtr Mtr	2 MsHI FCvr Plastic Reader	Green	12	10.3	60	OC06	300 lb/ft2	
Body - 1017 Spec Grade										
Ped	10172001	1017-12 Body Black 2 MsHI	-	Black	12	6.5	60	OC06	300 lb/ft2	
Ped	10172002	1017-12 Body Green 2 MsHI	-	Green	12	6.5	60	OC06	300 lb/ft2	
Lid - 1017 Spec Grade										
Ped	10174001	1017 Fish Cover Black Wtr Mtr	-	Black	-	5.1	36	OC06	300 lb/ft2	
Ped	10174002	1017 Fish Cover Black Wtr Mtr	Cast Iron Reader	Black	-	5.5	36	OC06	300 lb/ft2	
Adapter - 1017 Spec Grade										
Ped	MS02050	1017 Fish Black Adapter Ring	Fits Hinge Cover	Black	-	.-	.-	OC06	300 lb/ft2	
Ped	MS02049	1017 Fish Green Adapter Ring	Fits Hinge Cover	Green	-	.-	.-	OC06	300 lb/ft2	



**LIGHT DUTY
PEDESTRIAN / GREENBELT**



Rating	Part #	Desc 1	Desc 2	Color	Depth	Item Weight	Pallet Qty	Line Item Discount	Design Load	Quick Ship
Lid - 1118										
Ped	11184082	1118 Fish Cover Black Wtr Mtr	-	Black	-	2.8	200	OC06	300 lb/ft2	
Ped	11184090	1118 Fish Cover Black Wtr Mtr	Recess AMR	Black	-	2.8	200	OC06	300 lb/ft2	
Ped	11184100	1118 Fish Cover Black Wtr Mtr	Plastic Reader	Black	-	2.8	200	OC06	300 lb/ft2	
Ped	11184101	1118 Fish Cover Black Wtr Mtr	Cast Iron Reader	Black	-	2.8	200	OC06	300 lb/ft2	

CARSON 1520

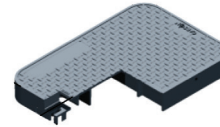
1520 & 1419

HDPE

15" X 20"



LIGHT DUTY
PEDESTRIAN / GREENBELT



Rating	Part #	Desc 1	Desc 2	Color	Depth	Item Weight	Pallet Qty	Line Item Discount	Design Load	Quick Ship
Unit - 1520										
Ped	15201009	1520-18 Black Wtr Mtr	2 MsHI Flsh Cover	Black	18	13.6	44	OC06	300 lb/ft2	
Ped	15201010	1520-18 Black Wtr Mtr	2 MsHI FCvr Plastic Reader	Black	18	13.7	44	OC06	300 lb/ft2	
Ped	15201011	1520-18 Black Wtr Mtr	2 MsHI FCvr Cast Iron Reader	Black	18	15.3	44	OC06	300 lb/ft2	
Body - 1520										
Ped	15202002	1520-18 Body Black 2 MsHI	-	Black	18	11.7	44	OC06	300 lb/ft2	
Extension - 1520										
Ped	15203001	1520-6 Ext Black	-	Black	6	4.0	42	OC06	300 lb/ft2	

CARSON 1419

HDPE

14" X 19"



LIGHT DUTY
PEDESTRIAN / GREENBELT



Rating	Part #	Desc 1	Desc 2	Color	Depth	Item Weight	Pallet Qty	Line Item Discount	Design Load	Quick Ship
Unit - 1419 Spec Grade										
Ped	14191009	1419-12 Green Sewer	0 MsHI T Cover	Green	12	9.7	78	OC06	300 lb/ft2	
Ped	14191022	1419-12 Green Water	2 MsHI T Cover	Green	12	9.7	78	OC06	300 lb/ft2	
Ped	14191030	1419-12 Purple RWDNDES	2 MsHI FCvr Cast Iron Reader	Purple	12	12.6	78	OC06	300 lb/ft2	
Ped	14191033	1419-12 Green Water	2 MsHI Flsh Cover	Green	12	9.7	78	OC06	300 lb/ft2	
Ped	14191261	1419-12 Black Wtr Mtr	2 MsHI Hinged Cover Rnd Plate	Black	12	9.6	78	OC06	300 lb/ft2	
Ped	14191278	1419-12 Black Wtr Mtr	2 MsHI FCvr Cast Iron Reader	Black	12	11.6	78	OC06	300 lb/ft2	
Ped	14191279	1419-12 Black Wtr Mtr	2 MsHI FCvr Plastic Reader	Black	12	9.9	78	OC06	300 lb/ft2	
Ped	14191282	1419-12 Black Wtr Mtr	2 MsHI Flsh Cover	Black	12	9.7	78	OC06	300 lb/ft2	
Ped	14191283	1419-12 Black Wtr Mtr	2 MsHI T Cover	Black	12	9.7	78	OC06	300 lb/ft2	
Ped	14191284	1419-24 Black Wtr Mtr	2 MsHI FCvr Cast Iron Reader	Black	24	19.8	48	OC06	300 lb/ft2	
Ped	14191292	1419-24 Black Wtr Mtr	2 MsHI Flsh Cover	Black	24	17.8	48	OC06	300 lb/ft2	
Body - 1419 Spec Grade										
Ped	14192002	1419-12 Body Green 0 MsHI	-	Green	12	7.0	78	OC06	300 lb/ft2	
Ped	14192004	1419-12 Body Green 2 MsHI	-	Green	12	7.0	78	OC06	300 lb/ft2	
Ped	14192005	1419-12 Body Black 2 MsHI	-	Black	12	7.0	78	OC06	300 lb/ft2	
Ped	14192014	1419-12 Body Purple 2 MsHI	-	Purple	12	7.5	78	OC06	300 lb/ft2	
Ped	14192011	1419-24 Body Black 2 MsHI	-	Black	24	15.2	48	OC06	300 lb/ft2	
Extension - 1419 Spec Grade										
Ped	14193004	1419-3 Ext Black	-	Black	3	2.2	78	OC06	300 lb/ft2	
Ped	14193001	1419-6 Ext Green	-	Green	6	4.0	54	OC06	300 lb/ft2	
Ped	14193002	1419-6 Ext Black	-	Black	6	4.0	54	OC06	300 lb/ft2	
Ped	14193006	1419-6 Ext Purple	-	Purple	6	4.0	54	OC06	300 lb/ft2	

CONTINUED ON NEXT PAGE

*Products are rated by the lowest component rating. A tier 15 cover with a tier 22 body is rated tier 15. A tier 22 cover with a tier 22 body is rated tier 22.

CARSON

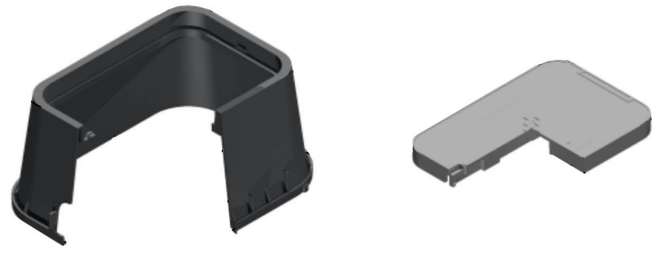
Rating	Part #	Desc 1	Desc 2	Color	Depth	Item Weight	Pallet Qty	Line Item Discount	Design Load	Quick Ship
Lid - 1419 Spec Grade										
Ped	14194003	1419 T Cover Green Sewer	-	Green	-	2.4	200	OC06	300 lb/ft2	
Ped	14194014	1419 Fish Cover Green Water	-	Green	-	2.2	200	OC06	300 lb/ft2	
Ped	14194015	1419 Hing Cover Green Water	-	Green	-	2.7	200	OC06	300 lb/ft2	
Ped	14194016	1419 Fish Cover Purple RWDNDES	-	Purple	-	3.0	200	OC06	300 lb/ft2	
Ped	14194157	1419 Fish Cover Black Wtr Mtr	Cast Iron Reader	Black	-	4.6	200	OC06	300 lb/ft2	
Ped	14194158	1419 Fish Cover Black Wtr Mtr	Plastic Reader	Black	-	3.0	200	OC06	300 lb/ft2	
Ped	14194160	1419 T Cover Black Wtr Mtr	-	Black	-	2.7	200	OC06	300 lb/ft2	
Ped	14194161	1419 Fish Cover Black Wtr Mtr	-	Black	-	2.6	200	OC06	300 lb/ft2	
Ped	14194166	1419 T Cover Black Wtr Mtr	Cast Iron Reader	Black	-	4.7	200	OC06	300 lb/ft2	
Ped	14194168	1419 T Cover Black Wtr Mtr	Solid Cast Iron	Black	-	5.2	200	OC06	300 lb/ft2	
Ped	14194199	1419 Fish Cover Black Wtr Mtr	3.0 in. AMR Hole OD Recess	Black	-	2.6	200	OC06	300 lb/ft2	
Ped	14194292	1419 Fish Cover Black Wtr Mtr	4.5 in. AMR Hole OD Recess OS	Black	-	2.6	200	OC06	300 lb/ft2	
Ped	14194310	1419 Fish Cover Green Wtr Mtr	4.5 in. AMR Hole OD Recess OS	Green	-	2.6	200	OC06	300 lb/ft2	

CARSON 1220



**LIGHT DUTY
PEDESTRIAN / GREENBELT**

**HDPE
12" X 20"**



Rating	Part #	Desc 1	Desc 2	Color	Depth	Item Weight	Pallet Qty	Line Item Discount	Design Load	Quick Ship
Unit - 1220 Spec Grade										
Ped	12201047	1220-12 Green Sewer HBlt	0 MsHI Fish Cover	Green	12	13.7	48	OC06	300 lb/ft2	
Ped	12201057	1220-12 Purple RWDNDES	2 MsHI FCvr Cast Iron Rdr	Purple	12	13.9	48	OC06	300 lb/ft2	
Ped	12201090	1220-12 Purple RWDNDES	2 MsHI T Cover	Purple	12	13.9	48	OC06	300 lb/ft2	
Ped	12201133	1220-12 Black Wtr Mtr	2 MsHI FCvr Cast Iron Reader	Black	12	14.9	48	OC06	300 lb/ft2	
Ped	12201134	1220-12 Black Wtr Mtr	2 MsHI FCvr Plastic Reader	Black	12	13.3	48	OC06	300 lb/ft2	
Ped	12201135	1220-12 Black Wtr Mtr	3 MsHI FCvr Cast Iron Reader	Black	12	13.3	48	OC06	300 lb/ft2	
Ped	12201139	1220-12 Black Wtr Mtr	2 MsHI Fish Cover	Black	12	13.3	48	OC06	300 lb/ft2	
Ped	12201150	1220-12 Black Wtr Mtr HBlt	2 MsHI FCvr Cast Iron Reader	Black	12	14.9	48	OC06	300 lb/ft2	
Body - 1220 Spec Grade										
Ped	12202004	1220-12 Body Green 2 MsHI	-	Green	12	8.9	48	OC06	300 lb/ft2	
Ped	12202005	1220-12 Body Black 2 MsHI	-	Black	12	9.3	48	OC06	300 lb/ft2	
Ped	12202011	1220-12 Body Black 3 MsHI	-	Black	12	9.3	48	OC06	300 lb/ft2	
Ped	12202017	1220-12 Body Purple 2 MsHI	-	Purple	12	9.3	48	OC06	300 lb/ft2	
Extension - 1220 Spec Grade										
Ped	12203001	1220-6 Ext Green	-	Green	6	6.5	32	OC06	300 lb/ft2	
Ped	12203002	1220-6 Ext Black	-	Black	6	6.5	32	OC06	300 lb/ft2	
Ped	12203006	1220-6 Ext Purple	-	Purple	6	6.5	32	OC06	300 lb/ft2	
Lid - 1220 Spec Grade										
Ped	12204054	1220 Fish Cover Green Sewer	-	Green	-	2.7	150	OC06	300 lb/ft2	
Ped	12204029	1220 Fish Cover Purple RWDNDES	Cast Iron Reader	Purple	-	3.7	150	OC06	300 lb/ft2	
Ped	12204069	1220 T Cover Purple RWDNDES	-	Purple	-	4.7	150	OC06	300 lb/ft2	
Ped	12204080	1220 Fish Cover Black Wtr Mtr	Cast Iron Reader	Black	-	5.7	150	OC06	300 lb/ft2	
Ped	12204081	1220 Fish Cover Black Wtr Mtr	-	Black	-	5.7	150	OC06	300 lb/ft2	
Ped	12204082	1220 Fish Cover Black Wtr Mtr	Plastic Reader	Black	-	5.7	150	OC06	300 lb/ft2	

16 *Products are rated by the lowest component rating. A tier 15 cover with a tier 22 body is rated tier 15. A tier 22 cover with a tier 22 body is rated tier 22.



LIGHT DUTY
PEDESTRIAN / GREENBELT

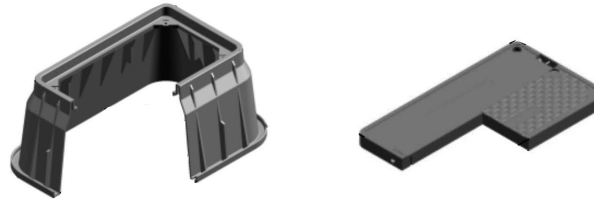


Rating	Part #	Desc 1	Desc 2	Color	Depth	Item Weight	Pallet Qty	Line Item Discount	Design Load	Quick Ship
Unit - 1324 Spec Grade										
Ped	13241045	1324-12 Black Wtr Mtr L-Bolt	0 MsHI Fish Cover	Black	12	22.7	16	OC06	300 lb/ft2	
Ped	13241081	1324-12 Purple RWDNDES	0 MsHI FCvr Cast Iron Rd	Purple	12	22.7	16	OC06	300 lb/ft2	
Ped	13241088	1324-12 Black Wtr Mtr	0 MsHI FCvr Cast Iron Reader	Black	12	23.0	16	OC06	300 lb/ft2	
Ped	13241101	1324-12 Black Wtr Mtr	0 MsHI Fish Cover	Black	12	20.2	16	OC06	300 lb/ft2	
Ped	13241178	1324-12 Black Wtr Mtr HBlit	0 MsHI FCvr Cast Iron Reader	Black	12	22.2	16	OC06	300 lb/ft2	
Ped	13241185	1324-12 Black Wtr Mtr HBlit	0 MsHI Fish Cover	Black	12	20.2	16	OC06	300 lb/ft2	
Ped	13241186	1324-12 Black Wtr Mtr LBlit	0 MsHI FCvr Cast Iron Reader	Black	12	21.8	16	OC06	300 lb/ft2	
Ped	13241066	1324-15 Green Water HBlit	0 MsHI Fish Cover	Green	15	22.7	16	OC06	300 lb/ft2	
Ped	13241092	1324-15 Black Wtr Mtr	0 MsHI Fish Cover	Black	15	22.5	16	OC06	300 lb/ft2	
Ped	13241102	1324-15 Black Wtr Mtr	0 MsHI FCvr Cast Iron Reader	Black	15	24.5	16	OC06	300 lb/ft2	
Ped	13241175	1324-15 Black Wtr Mtr HBlit	0 MsHI FCvr Cast Iron Reader	Black	15	24.5	16	OC06	300 lb/ft2	
Ped	13241180	1324-15 Black Wtr Mtr LBlit	0 MsHI FCvr Plastic Reader	Black	15	22.8	16	OC06	300 lb/ft2	
Ped	13241182	1324-15 Black Wtr Mtr HBlit	0 MsHI FCvr Plastic Reader	Black	15	22.8	16	OC06	300 lb/ft2	
Ped	13241187	1324-15 Black Wtr Mtr HBlit	0 MsHI Fish Cover	Black	15	22.5	16	OC06	300 lb/ft2	
Body - 1324 Spec Grade										
Ped	13242001	1324-12 Body Green 0 MsHI	-	Green	12	14.5	16	OC06	300 lb/ft2	
Ped	13242015	1324-12 Body Purple 0 MsHI	-	Purple	12	14.5	16	OC06	300 lb/ft2	
Ped	13242019	1324-12 Body Black 0 MsHI	-	Black	12	14.5	16	OC06	300 lb/ft2	
Ped	13242002	1324-15 Body Green 0 MsHI	-	Green	15	16.8	16	OC06	300 lb/ft2	
Ped	13242004	1324-15 Body Black 0 MsHI	-	Black	15	16.8	16	OC06	300 lb/ft2	
Lid - 1324 Spec Grade										
Ped	13244046	1324 Fish Cover Purple RWDNDES	Cast Iron Reader	Purple	-	8.0	100	OC06	300 lb/ft2	
Ped	13244127	1324 Fish Cover Black Wtr Mtr	Cast Iron Reader	Black	-	7.7	100	OC06	300 lb/ft2	
Ped	13244129	1324 Fish Cover Black Wtr Mtr	-	Black	-	5.7	100	OC06	300 lb/ft2	
Ped	13244130	1324 Fish Cover Black Wtr Mtr	Plastic Reader	Black	-	6.0	100	OC06	300 lb/ft2	
Ped	13244132	1324 T Cover Black Wtr Mtr	-	Black	-	6.4	100	OC06	300 lb/ft2	
Ped	13244036	1324 Fish Cover Green Water	-	Green	-	5.7	100	OC06	300 lb/ft2	

*Products are rated by the lowest component rating. A tier 15 cover with a tier 22 body is rated tier 15. A tier 22 cover with a tier 22 body is rated tier 22.



LIGHT DUTY
PEDESTRIAN / GREENBELT



Rating	Part #	Desc 1	Desc 2	Color	Depth	Item Weight	Pallet Qty	Line Item Discount	Design Load	Quick Ship
Unit - 1730 Spec Grade										
Ped	17301065	1730-12 Green Prsr Swr HBlit	0 MsHI Fish Cover	Green	12	29.4	16	OC06	300 lb/ft2	
Ped	17301078	1730-12 Green Water HBlit	0 MsHI Fish Cover	Green	12	29.3	16	OC06	300 lb/ft2	
Ped	17301090	1730-12 Purple RWDNDES HBlit	0 MsHI FCvr Cast Iron Reader	Purple	12	30.7	16	OC06	300 lb/ft2	
Ped	17301204	1730-12 Black Wtr Mtr HBlit	0 MsHI FCvr Cast Iron Reader	Black	12	31.4	16	OC06	300 lb/ft2	
Ped	17301207	1730-12 Black Wtr Mtr LBlit	0 MsHI FCvr Plastic Reader	Black	12	29.8	16	OC06	300 lb/ft2	
Ped	17301273	1730-12 Black Wtr Mtr	0 MsHI Fish Cover	Black	12	29.9	16	OC06	300 lb/ft2	
Ped	17301274	1730-12 Black Wtr Mtr	0 MsHI FCvr Cast Iron Reader	Black	12	31.4	16	OC06	300 lb/ft2	
Ped	17301322	1730-12 Black Wtr Mtr	0 MsHI FCvr Plastic Reader	Black	12	29.8	16	OC06	300 lb/ft2	
Ped	17301044	1730-15 Black Water HBlit	0 MsHI Fish Cover	Black	15	34.4	16	OC06	300 lb/ft2	
Ped	17301111	1730-15 Green Blank LBlit	0 MsHI T Cover	Green	15	34.3	16	OC06	300 lb/ft2	
Ped	17301043	1730-18 Black Water LBlit	0 MsHI Fish Cover	Black	18	37.3	16	OC06	300 lb/ft2	
Ped	17301066	1730-18 Green Prsr Swr HBlit	0 MsHI Fish Cover	Green	18	37.2	16	OC06	300 lb/ft2	
Ped	17301145	1730-18 Green Sewer HBlit	0 MsHI Fish Cover	Green	18	37.3	16	OC06	300 lb/ft2	
Ped	17301202	1730-18 Black Wtr Mtr HBlit	0 MsHI FCvr Cast Iron Reader	Black	18	39.3	16	OC06	300 lb/ft2	
Ped	17301203	1730-18 Black Wtr Mtr LBlit	0 MsHI FCvr Plastic Reader	Black	18	37.6	16	OC06	300 lb/ft2	
Ped	17301205	1730-18 Black Wtr Mtr HBlit	0 MsHI FCvr Plastic Reader	Black	18	37.6	16	OC06	300 lb/ft2	
Ped	17301230	1730-18 Black Wtr Mtr	0 MsHI Fish Cover	Black	18	37.3	16	OC06	300 lb/ft2	
Ped	17301277	1730-18 Black Wtr Mtr	0 MsHI FCvr Cast Iron Reader	Black	18	39.3	16	OC06	300 lb/ft2	
Ped	17301235	1730-24 Blk-Grn Blank	4x EzLck T Cover	Blk-Grn	24	64.1	6	OC06	300 lb/ft2	
Ped	17301239	1730-24 Black Wtr Mtr HBlit	0 MsHI Fish Cover	Black	24	62.0	6	OC06	300 lb/ft2	
Ped	17301240	1730-24 Black Wtr Mtr HBlit	0 MsHI FCvr Plastic Reader	Black	24	62.4	6	OC06	300 lb/ft2	
Ped	17301241	1730-24 Black Wtr Mtr HBlit	0 MsHI FCvr Cast Iron Reader	Black	24	64.0	6	OC06	300 lb/ft2	
Ped	17301369	1730-24 Blk-Grn Blank	6x EzLck TCvr 2pc Plug	Blk-Grn	24	63.6	6	OC06	300 lb/ft2	
Body - 1730 Spec Grade										
Ped	17302001	1730-12 Body Green 0 MsHI	-	Green	12	19.0	16	OC06	300 lb/ft2	
Ped	17302014	1730-12 Body Black 0 MsHI	-	Black	12	19.0	16	OC06	300 lb/ft2	
Ped	17302002	1730-15 Body Green 0 MsHI	-	Green	15	24.0	16	OC06	300 lb/ft2	
Ped	17302015	1730-15 Body Black 0 MsHI	-	Black	15	24.0	16	OC06	300 lb/ft2	
Ped	17302004	1730-18 Body Green 0 MsHI	-	Green	18	26.9	16	OC06	300 lb/ft2	
Ped	17302013	1730-18 Body Black 0 MsHI	-	Black	18	26.9	16	OC06	300 lb/ft2	
Ped	17302051	1730-24 Body Black 0 MsHI	2x Loc-Kit Clip	Black	24	51.6	6	OC06	300 lb/ft2	
Ped	17302053	1730-24 Body Black 0 MsHI	4x Loc-Kit Clip	Black	24	51.6	6	OC06	300 lb/ft2	
Lid - 1730 Spec Grade										
Ped	17304157	1730 Fish Cover Black Wtr Mtr	Plastic Reader	Black	-	10.8	120	OC06	300 lb/ft2	
Ped	17304158	1730 Fish Cover Black Wtr Mtr	Cast Iron Reader	Black	-	12.4	120	OC06	300 lb/ft2	
Ped	17304160	1730 Fish Cover Black Wtr Mtr	-	Black	-	10.4	120	OC06	300 lb/ft2	



LIGHT DUTY
PEDESTRIAN / GREENBELT



Rating	Part #	Desc 1	Desc 2	Color	Depth	Item Weight	Pallet Qty	Line Item Discount	Design Load	Quick Ship
Unit - 2200 Spec Grade										
Ped	22001006	2200-18 Black Wtr Mtr	2 MsHI FCvr Dallas Lock	Black	18	16.4	56	OC06	300 lb/ft2	
Ped	22001007	2200-18 Black Wtr Mtr	2 MsHI FCvr Cast Iron D-Lock	Black	18	23.3	56	OC06	300 lb/ft2	
Ped	22001008	2200-18 Black Wtr Mtr	2 MsHI FCvr Cast Iron	Black	18	23.2	56	OC06	300 lb/ft2	
Ped	22001009	2200-18 Black Wtr Mtr	2 MsHI Fish Cover	Black	18	16.0	56	OC06	300 lb/ft2	
Ped	22001010	2200-18 Black Wtr Mtr	2 MsHI FCvr Cast Iron TRH	Black	18	13.2	56	OC06	300 lb/ft2	
Body - 2200 Spec Grade										
Ped	22002001	2200-18 Body Black 2 MsHI	-	Black	18	13.2	56	OC06	300 lb/ft2	
Extension - 2200 Spec Grade										
Ped	22003001	2200-6 Ext Black	-	Black	6	4.6	180	OC06	300 lb/ft2	
Lid - 2200 Spec Grade										
Ped	22004008	2200 Fish Cover Black Wtr Mtr	-	Black	-	3.5	180	OC06	300 lb/ft2	
Ped	22004009	2200 Fish Cover Black Wtr Mtr	Dallas Lock	Black	-	3.2	180	OC06	300 lb/ft2	
Ped	22004010	2200 Fish Cover Black Wtr Mtr	Solid Cast Iron	Black	-	10.0	180	OC06	300 lb/ft2	
Ped	22004012	2200 Fish Cover Black Wtr Mtr	Solid Cast Iron Dalas Lock	Black	-	10.1	180	OC06	300 lb/ft2	

HARDWARE & ACCESSORIES

Rating	Part #	Desc 1	For Use With	Line Item Discount	Design Load	Quick Ship
Carson Hardware						
-	80002005	1x HBlt + Wsh 3/8" 16 x 2-1/2"	Compatible: 1324, 1730	OC09	-	
-	80002006	1x LgPnta + Wsh + Rcfnt + Clip 3/8" 16 x 2-1/2" SST	Compatible: 1015, 1220, 1419	OC09	-	
-	80002007	1x HBlt + Wsh + Rcfnt + Spring 3/8" 16 x 2-1/2"	Compatible: 0910	OC09	-	
-	80002008	1x LgPnta + Wsh + Rcfnt 3/8" 16 x 2-1/2"	Compatible: 0809, 0910	OC09	-	
-	80002025	2x HBlt + Wsh SST 3/8" 16 x 2"	Compatible: 1324, 1730	OC09	-	
-	80002026	2x LgPnta + Wsh SST 3/8" 16 x 2"	Compatible: 1324, 1730	OC09	-	
-	80002027	2x HBlt + Wsh SST 1/2" 13 x 3-1/4"	Compatible: 2424, 2436, 2448	OC09	-	
-	80002029	2x HBlt + Wsh SST 1/2" 13 x 3-1/2"	Compatible: 2436, 3048, 3060	OC09	-	
-	80002030	2x LgPnta + Wsh SST 1/2" 13 x 3-1/2"	Compatible: 2436, 3048, 3060	OC09	-	
Carson Plastic Secondary Options						
-	-	Mouse Hole	HDPE	-	-	

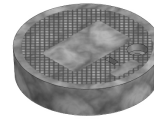
*Products are rated by the lowest component rating. A tier 15 cover with a tier 22 body is rated tier 15. A tier 22 cover with a tier 22 body is rated tier 22.

FIBRELYTE FL08

COMPOSITE
8" DIAMETER



MEDIUM DUTY
ANSI/SCTE TIER 5, 8, AND 15



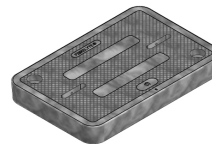
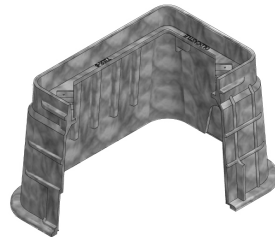
Rating	Part #	Desc 1	Desc 2	Color	Depth	Item Weight	Pallet Qty	Line Item Discount	Design Load	Quick Ship
Body - FL08										
T8	02006005	Box, FL08 T	FL08TBOX	Gray	12	6.0	64	OC11	8000	
Lid - FL08										
T8	02001180	Lid, FL08 D - "Water"	FL08D001	Gray	-	3.0	100	OC11	8000	
T8	02006130	Lid, FL08 T - "Water"	FL08T001	Gray	-	3.0	100	OC11	8000	

FIBRELYTE FL09

COMPOSITE
10" X 15"



MEDIUM DUTY
ANSI/SCTE TIER 5, 8, AND 15



Rating	Part #	Desc 1	Desc 2	Color	Depth	Item Weight	Pallet Qty	Line Item Discount	Design Load	Quick Ship
Body - FL09										
T8	02011000	Box, FL09 T	FL09TBOX	Gray	12	16.0	48	OC11	8000	
Lid - FL09										
T8	02001250	Lid, FL09 D - "Water"	FL09D001	Gray	-	5.0	120	OC11	8000	
T8	02001351	Lid, FL09 P "Water" (Offset Neptune)	FL09P001-1	Gray	-	5.0	120	OC11	8000	
T8	02006170	Lid, FL09 T - "Water"	FL09T001	Gray	-	5.0	120	OC11	8000	
T8	02001320	Lid, FL09 G - "Meter"	FL09G	Gray	-	5.0	120	OC11	8000	

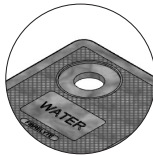
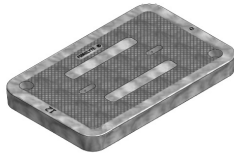
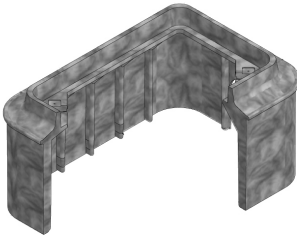
FIBRELYTE FL12

COMPOSITE
12" X 20"

FL12 & FL16



MEDIUM DUTY
ANSI/SCTE TIER 5, 8, AND 15



Rating	Part #	Desc 1	Desc 2	Color	Depth	Item Weight	Pallet Qty	Line Item Discount	Design Load	Quick Ship
--------	--------	--------	--------	-------	-------	-------------	------------	--------------------	-------------	------------

Body - FL12										
T8	02001032	Box, FL12 T 12" (W/Mouseholes)	FL12TBOX12 WM	Gray	12	22.0	30	OC11	8000	
Lid - FL12 (Lids come standard with AMR hole)										
T8	02001365	Lid, FL12 D - "Water"	FL12D001	Gray	-	10.0	80	OC11	8000	
T8	02001381	Lid, FL12 P - "FKAA Water" W/Off-Set Neptune Probe	FL12P329-ON	Gray	-	10.0	80	OC11	8000	
T8	02001375	Lid, FL12 G - "Water Meter"	FL12G378	Gray	-	10.0	80	OC11	8000	

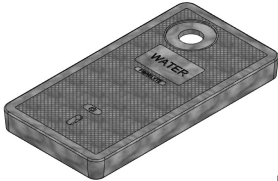
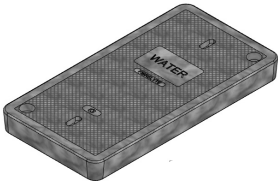
FIBRELYTE FL16

COMPOSITE
10" X 20"

FIBRELYTE



MEDIUM DUTY
ANSI/SCTE TIER 5, 8, AND 15



Rating	Part #	Desc 1	Desc 2	Color	Depth	Item Weight	Pallet Qty	Line Item Discount	Design Load	Quick Ship
--------	--------	--------	--------	-------	-------	-------------	------------	--------------------	-------------	------------

Lid - FL16 (Lids come standard with AMR hole)										
T8	02001395	Lid, FL16 D - "Water"	FL16D001	Gray	-	13.0	80	OC11	8000	
T8	02001425	Lid, FL16 P - "Water" w/Probe	FL16P001	Gray	-	13.0	80	OC11	8000	
T8	02006230	Lid, FL16 T - "Water"	FL16T001	Gray	-	13.0	80	OC11	8000	

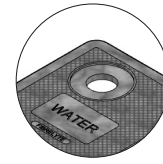
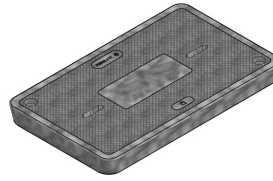
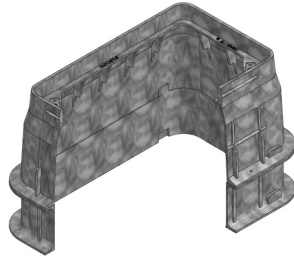
*Products are rated by the lowest component rating. A tier 15 cover with a tier 22 body is rated tier 15. A tier 22 cover with a tier 22 body is rated tier 22.

FIBRELYTE FL30

COMPOSITE
13" X 24"



MEDIUM DUTY
ANSI/SCTE TIER 5, 8, AND 15



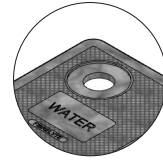
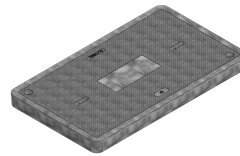
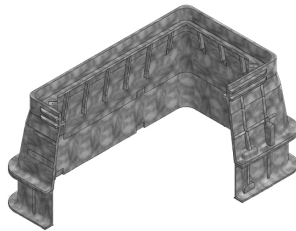
Rating	Part #	Desc 1	Desc 2	Color	Depth	Item Weight	Pallet Qty	Line Item Discount	Design Load	Quick Ship
Body - FL30										
T8	02006040	Box, FL30 T 12"	FL30TBOX12	Gray	12	27.0	24	OC11	8000	
T8	02006045	Box, FL30 T 18"	FL30TBOX18	Gray	18	35.0	18	OC11	8000	
T8	02006052	Box, FL30 T 24"	FL30TBOX24	Gray	24	38.0	12	OC11	8000	
Lid - FL30 (Lids come standard with AMR hole)										
T8	02001440	Lid, FL30 D - "Water"	FL30D001	Gray	-	17.0	60	OC11	8000	
T8	02001494	Lid, FL30 G - "Water Meter"	FL30G378	Gray	-	17.0	60	OC11	8000	
T8	02001482	Lid, FL30 P - "Water" 2" Probe	FL30P001	Gray	-	17.0	60	OC11	8000	
T8	02006265	Lid, FL30 T - "Water"	FL30T001	Gray	-	17.0	60	OC11	8000	

FIBRELYTE FL36

COMPOSITE
17" X 30"



MEDIUM DUTY
ANSI/SCTE TIER 5, 8, AND 15



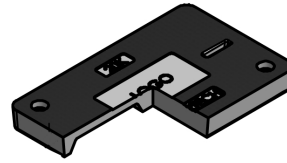
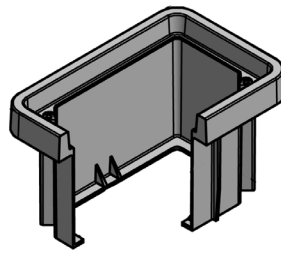
Rating	Part #	Desc 1	Desc 2	Color	Depth	Item Weight	Pallet Qty	Line Item Discount	Design Load	Quick Ship
Body - FL36										
T8	02006095	Box, FL36 T 12"	FL36TBOX12	Gray	12	39.0	16	OC11	8000	
T8	02006100	Box, FL36 T 18"	FL36TBOX18	Gray	18	51.0	12	OC11	8000	
T8	02006110	Box, FL36 T 24"	FL36TBOX24	Gray	24	58.0	8	OC11	8000	
Lid - FL36 (Lids come standard with AMR hole)										
T8	02001530	Lid, FL36 D - "Water"	FL36D001	Gray	-	38.0	30	OC11	8000	
T8	02001567	Lid, FL36 G - "Water Meter"	FL36G378	Gray	-	38.0	30	OC11	8000	
T8	02001568	Lid, FL36 P - "Water"	FL36P001	Gray	-	38.0	30	OC11	8000	
T8	02006390	Lid, FL36 T - "Water"	FL36T001	Gray	-	38.0	30	OC11	8000	

SYNERTECH 1118

1118 & 1212



MEDIUM DUTY
ANSI/SCTE TIER 5, 8, AND 15



DUO MOLD
11" X 18"

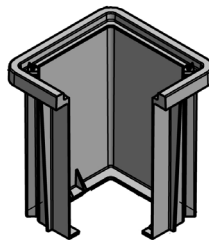
Rating	Part #	Desc 1	Desc 2	Color	Depth	Item Weight	Pallet Qty	Line Item Discount	Design Load	Quick Ship
Body - 1118										
T15	32108101	Box, SYN1118 T 12" Duo	SYN1118TBOX12	Gray	12	25.0	32	OC10	15000	
T15	32112101	Box, SYN1118 T 18" Duo	SYN1118TBOX18	Gray	18	30.0	32	OC10	15000	
Lid - 1118										
T15	31050521	Lid, SYN1118 T - Water	SYN1118T001	Gray	-	26.0	56	OC10	15000	

SYNERTECH 1212

SYNERTECH



MEDIUM DUTY
ANSI/SCTE TIER 5, 8, AND 15



DUO MOLD
12" X 12"

Rating	Part #	Desc 1	Desc 2	Color	Depth	Item Weight	Pallet Qty	Line Item Discount	Design Load	Quick Ship
Body - 1212										
T15	32120101	Box, SYN1212 T 12" Duo	SYN1212TBOX12	Gray	12	16.0	36	OC10	15000	
T15	32124101	Box, SYN1212 T 18" Duo	SYN1212TBOX18	Gray	18	20.0	36	OC10	15000	
Lid - 1212										
T22	31100531	Lid, SYN1212 T - "WATER"	SYN1212T-T22	Gray	-	15.0	200	OC10	22500	

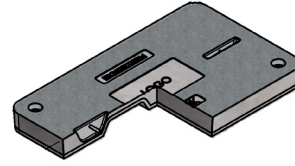
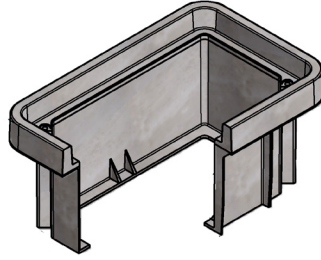
*Products are rated by the lowest component rating. A tier 15 cover with a tier 22 body is rated tier 15. A tier 22 cover with a tier 22 body is rated tier 22.

SYNERTECH 1324

DUO MOLD
13" X 24"



MEDIUM DUTY
ANSI/SCTE TIER 5, 8, AND 15



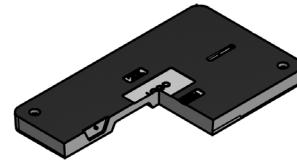
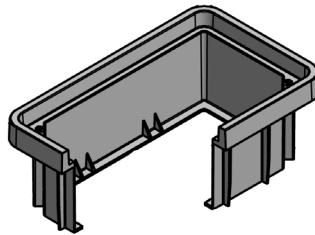
Rating	Part #	Desc 1	Desc 2	Color	Depth	Item Weight	Pallet Qty	Line Item Discount	Design Load	Quick Ship
Body - 1324										
T15	32132101	Box, SYN1324 T 12" Duo	SYN1324TBOX12	Gray	12	33.0	30	OC10	15000	
T15	32136101	Box, SYN1324 T 18" Duo	SYN1324TBOX18	Gray	18	37.0	16	OC10	15000	
T15	32140101	Box, SYN1324 T 24" Duo	SYN1324TBOX24	Gray	24	42.0	12	OC10	15000	
Lid - 1324										
T15	31150521	Lid, SYN1324 T - Water	SYN1324T001	Gray	-	38.0	50	OC10	15000	

SYNERTECH 1730

DUO MOLD
17" X 30"



MEDIUM DUTY
ANSI/SCTE TIER 5, 8, AND 15



Rating	Part #	Desc 1	Desc 2	Color	Depth	Item Weight	Pallet Qty	Line Item Discount	Design Load	Quick Ship
Body - 1730										
T15	32144101	Box, SYN1730 T 12" Duo	SYN1730TBOX12	Gray	12	42.0	12	OC10	15000	
T15	32148101	Box, SYN1730 T 18" Duo	SYN1730TBOX18	Gray	18	49.0	8	OC10	15000	
T15	32152101	Box, SYN1730 T 24" Duo	SYN1730TBOX24	Gray	24	54.0	6	OC10	15000	
Lid - 1730										
T15	31200521	Lid, SYN1730 T - Water	SYN1730T001	Gray	-	73.0	42	OC10	15000	

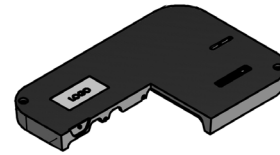
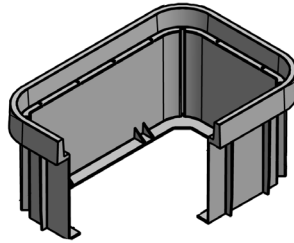
SYNERTECH 2436

DUO MOLD
24" X 36"

2436 & 3048



HEAVY DUTY
ANSI/SCTE TIER 22



Rating	Part #	Desc 1	Desc 2	Color	Depth	Item Weight	Pallet Qty	Line Item Discount	Design Load	Quick Ship
Body - 2436										
T22	32164101	Box, SYN2436 T 18" Duo	SYN2436TBOX18	Gray	18	80.0	4	OC10	22500	
T22	32168101	Box, SYN2436 T 24" Duo	SYN2436TBOX24	Gray	24	91.0	3	OC10	22500	
T22	32172101	Box, SYN2436 T 36" Duo	SYN2436TBOX36	Gray	36	112.0	2	OC10	22500	
Lid - 2436										
T22	31250521	Lid, SYN2436 T - Water	SYN2436T001	Gray	-	147.0	20	OC10	22500	

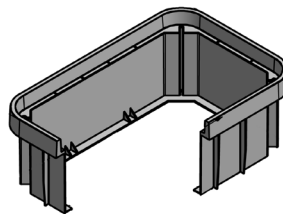
SYNERTECH 3048

DUO MOLD
30" X 48"

SYNERTECH



HEAVY DUTY
ANSI/SCTE TIER 22



Rating	Part #	Desc 1	Desc 2	Color	Depth	Item Weight	Pallet Qty	Line Item Discount	Design Load	Quick Ship
Body - 3048										
T22	32180101	Box, SYN3048 T 18" Duo	SYN3048TBOX18	Gray	18	119.0	4	OC10	22500	
T22	32184101	Box, SYN3048 T 24" Duo	SYN3048TBOX24	Gray	24	134.0	3	OC10	22500	
T22	32188101	Box, SYN3048 T 36" Duo	SYN3048TBOX36	Gray	36	160.0	2	OC10	22500	
Lid - 3048										
T22	31300521	Lid, SYN3048 T - Water	SYN3048T001	Gray	-	213.0	10	OC10	22500	

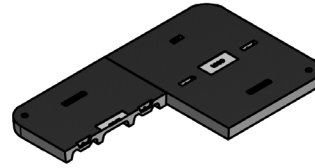
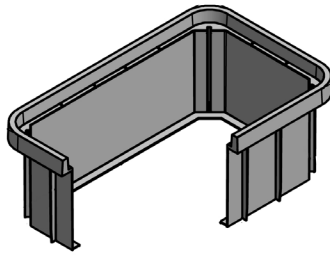
*Products are rated by the lowest component rating. A tier 15 cover with a tier 22 body is rated tier 15. A tier 22 cover with a tier 22 body is rated tier 22.

SYNERTECH 3660

DUO MOLD
36" X 60"



HEAVY DUTY
ANSI/SCTE TIER 22



Rating	Part #	Desc 1	Desc 2	Color	Depth	Item Weight	Pallet Qty	Line Item Discount	Design Load	Quick Ship
Body - 3660										
T22	32191101	Box, SYN3660 T 24" Duo	SYN3660TBOX24	Gray	24	188.0	3	OC10	22500	
T22	32192101	Box, SYN3660 T 36" Duo	SYN3660TBOX36	Gray	36	226.0	2	OC10	22500	
Lid - 3660										
T22	31350521	Lid, SYN3660 T - Water	SYN3660T001	Gray	-	357.0	5	OC10	22500	

HARDWARE & ACCESSORIES

Rating	Part #	Desc 1	Desc 2	For Use With	Line Item Discount	Design Load	Quick Ship
Synertech Hardware							
-	80002029	2x Hexbolt + 2x Wash SST	1/2" 13 x 3-1/2"	2436, 3048, 3060	OC09	-	
-	80002030	2x LgPnta + 2x Washer SST	1/2" 13 x 3-1/2"	2436, 3048, 3060	OC09	-	
-	80002033	2x Hexbolt + 2x Wash SST	1/2" 13 x 2-1/2"	1118, 1324, 1730	OC08	-	
-	80002034	2x LgPnta + 2x Washer SST	1/2" 13 x 2-1/2"	1118, 1324, 1730	OC09	-	
-	80002052	2x Hex Bolt + 2x Washer SST	1/2" 13 x 1-1/4"	1118, 1212	OC09	-	
-	80002054	2x Lg Penta Bolt + 2x Washer SST	1/2" 13 x 1-1/4"	1118, 1212	OC09	-	

H-SERIES 1118

POLYMER CONCRETE

11" X 18"

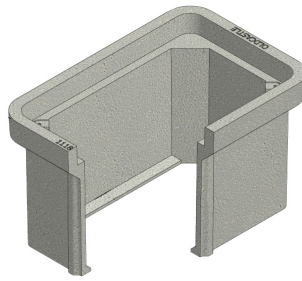
1118 & 1324



MEDIUM DUTY
ANSI/SCTE TIER 5, 8, AND 15



HEAVY DUTY
ANSI/SCTE TIER 22



Rating	Part #	Desc 1	Desc 2	Color	Depth	Item Weight	Pallet Qty	Line Item Discount	Design Load	Quick Ship
Body - 1118										
T22	11182001	Body, PC1118-12,SW	PC111812SW	Gray	12	39.0	28	OC03	22500	
Lid - 1118										
T15	11184601	Lid, PC1118-D, T15 - "Water"	PC1118D-T15	Gray	-	23.0	60	OC03	15000	
T22	11184124	Lid, PC1118-D, T22 - "Water"	PC1118D-T22	Gray	-	23.0	60	OC03	22500	

H-SERIES 1324

POLYMER CONCRETE

13" X 24"

STRAIGHT WALL (SW)



MEDIUM DUTY
ANSI/SCTE TIER 5, 8, AND 15

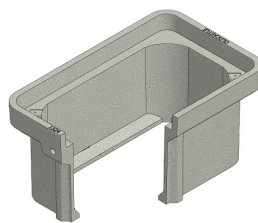


HEAVY DUTY
ANSI/SCTE TIER 22

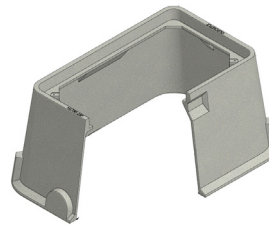
FLARED WALL (FW)



MEDIUM DUTY
ANSI/SCTE TIER 5, 8, AND 15



(SW)



(FW)



Rating	Part #	Desc 1	Desc 2	Color	Depth	Item Weight	Pallet Qty	Line Item Discount	Design Load	Quick Ship
Body - 1324										
T15	13242600	Body, PC1324-18,FW	PC132418FW	Gray	18	69.0	15	OC03	15000	
T22	13242020	Body, PC1324-12,SW	PC132412SW	Gray	12	53.0	20	OC03	22500	
T22	13242023	Body, PC1324-18,SW	PC132418SW	Gray	18	72.0	15	OC03	22500	
T22	13242038	Body, PC1324-24,SW	PC132424SW	Gray	24	91.0	10	OC03	22500	
Lid - 1324										
T15	13244601	Lid, PC1324-D, T15 - "Water"	PC1324D-T15	Gray	-	37.0	30	OC03	15000	
T22	13244330	Lid, PC1324-D, T22 - "Water"	PC1324D-T22	Gray	-	45.0	30	OC03	22500	

H-SERIES

*Products are rated by the lowest component rating. A tier 15 cover with a tier 22 body is rated tier 15. A tier 22 cover with a tier 22 body is rated tier 22.

H-SERIES 1730

POLYMER CONCRETE

17" X 30"

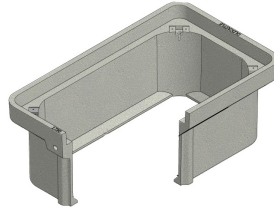
STRAIGHT WALL (SW)



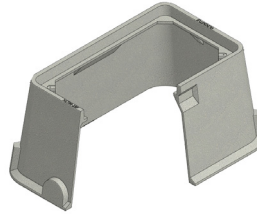
MEDIUM DUTY
ANSI/SCTE TIER 5, 8, AND 15



HEAVY DUTY
ANSI/SCTE TIER 22



(SW)



(FW)



FLARED WALL (FW)



MEDIUM DUTY
ANSI/SCTE TIER 5, 8, AND 15

Rating	Part #	Desc 1	Desc 2	Color	Depth	Item Weight	Pallet Qty	Line Item Discount	Design Load	Quick Ship
Body - 1730										
T15	17302600	Body, PC1730-18,FW	PC173018FW	Gray	19	87.0	6	OC03	15000	
T22	17302006	Body, PC1730-12,SW	PC173012SW	Gray	12	66.0	12	OC03	22500	
T22	17302030	Body, PC1730-18,SW	PC173018SW	Gray	18	90.0	9	OC03	22500	
T22	17302031	Body, PC1730-24,SW	PC173024SW	Gray	24	117.0	6	OC03	22500	
T22	17302046	Body, PC1730-30,SW	PC173030SW	Gray	30	156.0	6	OC03	22500	
Lid - 1730										
T15	17304601	Lid, PC1730-D, T15 - "Water"	PC1730D-T15	Gray	-	73.0	25	OC03	15000	
T22	17304602	Lid, PC1730-D, T22 - "Water"	PC1730D-T22	Gray	-	62.0	25	OC03	22500	

H-SERIES 2424

POLYMER CONCRETE

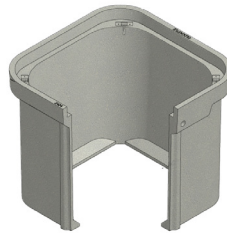
24" X 24"



MEDIUM DUTY
ANSI/SCTE TIER 5, 8, AND 15



HEAVY DUTY
ANSI/SCTE TIER 22



Rating	Part #	Desc 1	Desc 2	Color	Depth	Item Weight	Pallet Qty	Line Item Discount	Design Load	Quick Ship
Body - 2424										
T22	24242600	Body, PC2424-24,SW	PC242424SW	Gray	24	155.0	8	OC03	22500	
T22	24242601	Body, PC2424-36,SW	PC242436SW	Gray	36	176.0	8	OC03	22500	
Lid - 2424										
T15	24244602	Lid, PC2424-D, T15 - "Water"	PC2424D-T15	Gray	-	92.0	20	OC03	15000	
T22	24244603	Lid, PC2424-D, T22 - "Water"	PC2424D-T22	Gray	-	92.0	20	OC03	22500	

H-SERIES 2436

POLYMER CONCRETE

24" X 36"

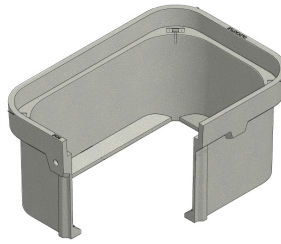
2436 & 3048



MEDIUM DUTY
ANSI/SCTE TIER 5, 8, AND 15



HEAVY DUTY
ANSI/SCTE TIER 22



Rating	Part #	Desc 1	Desc 2	Color	Depth	Item Weight	Pallet Qty	Line Item Discount	Design Load	Quick Ship
Body - 2436										
T22	24362016	Body, PC2436-18,SW	PC243618SW	Gray	18	151.0	4	OC03	22500	
T22	24362214	Body, PC2436-24,SW	PC243624SW	Gray	24	178.0	4	OC03	22500	
T22	24362212	Body, PC2436-30,SW	PC243630SW	Gray	30	142.0	2	OC03	22500	
T22	24362227	Body, PC2436-36,SW	PC243636SW	Gray	36	247.0	2	OC03	22500	
Lid - 2436										
T15	24364601	Lid, PC2436-D, T15 - "Water"	PC2436D-T15	Gray	-	127.0	10	OC03	15000	
T22	24364602	Lid, PC2436-D, T22 - "Water"	PC2436D-T22	Gray	-	127.0	10	OC03	22500	

H-SERIES 3048

POLYMER CONCRETE

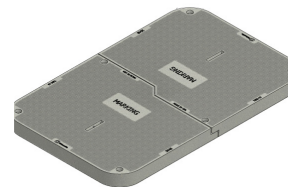
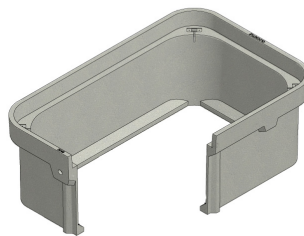
30" X 48"



MEDIUM DUTY
ANSI/SCTE TIER 5, 8, AND 15



HEAVY DUTY
ANSI/SCTE TIER 22



Rating	Part #	Desc 1	Desc 2	Color	Depth	Item Weight	Pallet Qty	Line Item Discount	Design Load	Quick Ship
Body - 3048										
T22	30482008	Body, PC3048-18,SW	PC304818SW	Gray	18	183.0	3	OC03	22500	
T22	30482021	Body, PC3048-24,SW	PC304824SW	Gray	24	227.0	3	OC03	22500	
T22	30482020	Body, PC3048-30,SW	PC304830SW	Gray	30	312.0	1	OC03	22500	
T22	30482017	Body, PC3048-36,SW	PC304836SW	Gray	36	357.0	1	OC03	22500	
Lid - 3048										
T15	30484600	Lid, PC3048-D, T15 - "Water", 2pc	PC3048D-T15	Gray	-	220.0	10	OC03	15000	
T22	30484601	Lid, PC3048-D, T22 - "Water", 2pc	PC3048D-T22	Gray	-	220.0	10	OC03	22500	

H-SERIES

H-SERIES 3636

POLYMER CONCRETE

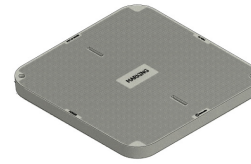
36" X 36"



MEDIUM DUTY
ANSI/SCTE TIER 5, 8, AND 15



HEAVY DUTY
ANSI/SCTE TIER 22



Rating	Part #	Desc 1	Desc 2	Color	Depth	Item Weight	Pallet Qty	Line Item Discount	Design Load	Quick Ship
Body - 3636										
T22	36362600	Body, PC3636-36,SW	PC363636SW	Gray	36	303.0	1	OC03	22500	
T22	36362601	Body, PC3636-48,SW	PC363648SW	Gray	48	356.0	1	OC03	22500	
Lid - 3636										
T15	36364601	Lid, PC3636-D, T15 - "Water"	PC3636D-T15	Gray	-	200.0	5	OC03	15000	
T22	36364602	Lid, PC3636-D, T22 - "Water"	PC3636D-T22	Gray	-	200.0	5	OC03	22500	

H-SERIES 4848

POLYMER CONCRETE

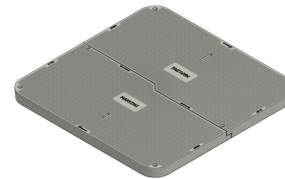
48" X 48"



MEDIUM DUTY
ANSI/SCTE TIER 5, 8, AND 15





HEAVY DUTY
ANSI/SCTE TIER 22



Rating	Part #	Desc 1	Desc 2	Color	Depth	Item Weight	Pallet Qty	Line Item Discount	Design Load	Quick Ship
Body - 4848										
T22	48482600	Body, PC4848-36,SW	PC484836SW	Gray	36	585.0	1	OC03	22500	
T22	48482601	Body, PC4848-48,SW	PC484848SW	Gray	48	754.0	1	OC03	22500	
Lid - 4848										
T15	48484600	Lid, PC4848-D, T15 - "Water", 2pc	PC4848D-T15	Gray	-	336.0		OC03	15000	
T22	48484601	Lid, PC4848-D, T22 - "Water", 2pc	PC4848D-T22	Gray	-	338.0		OC03	22500	

H-SERIES STEEL LIDS

Rating	Part #	Desc 1	Desc 2	For Use With			Line Item Discount	Design Load	Quick Ship	
-	11184054	1118 Steel T Cover Gal Blank	PC Box	1118	-	41	-	OC01	-	
-	13244180	1324 Steel T Cover Gal Blank	PC Box	1324	-	49	-	OC01	-	
-	17304186	1730 Steel T Cover Gal Blank	PC Box	1730	-	65	-	OC01	-	
-	24364011	2436 Steel T Cover Gal Blank	PC Box	2436	-	124	-	OC01	-	
-	30484019	3048 Steel T Cover Gal Blank	PC Box	3048	-	196	-	OC01	-	

HARDWARE & ACCESSORIES

Rating	Part #	Desc 1	Desc 2	For Use With			Line Item Discount	Design Load	Quick Ship
H-Series Hardware									
-	80002005	Hex Bolt & Washer SST	Hex 3/8" x 2-1/2"	0910 (Replacement for: 1324, 1730, 2424)			OC09	-	
-	80002025	2x Hex Bolt & 2x Washer SST	Hex 3/8" 16 x 2"	1118, 1324, 1730, 2424			OC09	-	
-	80002052	2x Hex Bolt & 2x Washer SST	Hex 1/2" 13 x 1-1/4"	1212			OC09	-	
-	80002033	2x Hex Bolt & 2x Washer SST	Hex 1/2" 13 x 2-1/2"	1118, 1324, 1730, 2424			OC08	-	
-	80002029	2x Hex Bolt & 2x Washer SST	Hex 1/2" 13 x 3-1/2"	2436, 3048, 3060, 3636, 4848			OC09	-	
-	80002026	2x LgPenta Bolt & 2x Washer SST	Penta 3/8" 16 x 2"	1118, 1324, 1730, 2424			OC09	-	
-	80002054	2x LgPenta Bolt & 2x Washer SST	Penta 1/2" 13 x 1-1/4"	1212			OC09	-	
-	80002034	2x LgPenta Bolt & 2x Washer SST	Penta 1/2" 13 x 2-1/2"	1118, 1324, 1730, 2424			OC09	-	
-	80002030	2x LgPenta Bolt & 2x Washer SST	Penta 1/2" 13 x3-1/2"	2436, 3048, 3060, 3636, 4848			OC09	-	
H-Series Secondary Options									
-	-	Mouse Hole	Polymer Concrete	-			OC09	-	

For solid bottom, dividers, and other H-Series options contact customer service.

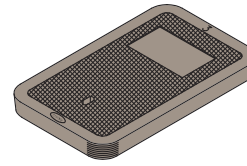
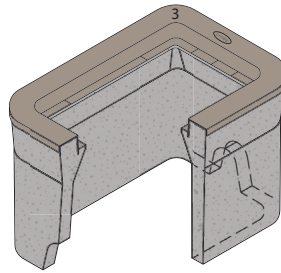
*Products are rated by the lowest component rating. A tier 15 cover with a tier 22 body is rated tier 15. A tier 22 cover with a tier 22 body is rated tier 22.

CHRISTY B03

CONCRETE
9" X 14"



LIGHT DUTY
PEDESTRIAN / GREENBELT



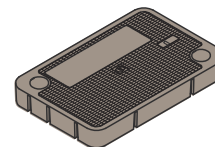
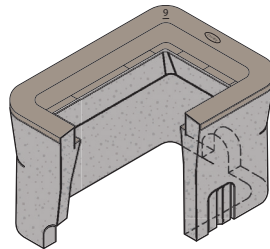
Rating	Part #	Desc 1	Desc 2	Color	Depth	Item Weight	Pallet Qty	Line Item Discount	Design Load	Quick Ship
Body - B03 with Plastic Cap										
Ped	1000000	Box, B03 Utility	B03BOX	Gray	12	72.0	28	OC01	300 lb/ft2	
Lid - B03										
Ped	1001160	Lid, B03 D - "Water"	B03D001	Gray	-	12.0	-	OC01	300 lb/ft2	
Ped	1001190	Lid, B03 Z - "EBMUD"	B03Z071	Gray	-	10.0	-	OC01	300 lb/ft2	

CHRISTY B09

CONCRETE
10" X 15"



LIGHT DUTY
PEDESTRIAN / GREENBELT



Rating	Part #	Desc 1	Desc 2	Color	Depth	Item Weight	Pallet Qty	Line Item Discount	Design Load	Quick Ship
Body - B09 with Plastic Cap										
Ped	1000005	Box, B09 Utility	B09BOX	Gray	12	90.0	28	OC01	300 lb/ft2	
Ped	1000015	Box, Bx09 Utility	BX09BOX	Gray	12	90.0	28	OC01	300 lb/ft2	
Lid - N09 with Plastic Cap										
Ped	1001240	Lid, B09 G - "Water" w/CI Reader	B09G001	Gray	-	20.0	-	OC01	300 lb/ft2	
Ped	1001350	Lid, Bx09 D - "Water Meter"	BX09D001	Gray	-	20.0	-	OC01	300 lb/ft2	
Ped	1001370	Lid, Bx09 G - "Water" w/CI Reader	BX09G001	Gray	-	20.0	-	OC01	300 lb/ft2	
Ped	1001390	Lid, BX09 P - "Water" w/Flexnet Probe (Corner)	BX09P001-F	Gray	-	20.0	-	OC01	300 lb/ft2	
Ped	1020100	Lid, N09 R - "Water"	N09R001	Gray	-	21.0	-	OC01	300 lb/ft2	
Ped	1020115	Lid, N09 RP - "Water" w/Probe (Corner)	N09RP001-T	Gray	-	21.0	-	OC01	300 lb/ft2	

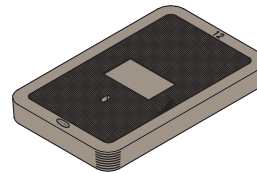
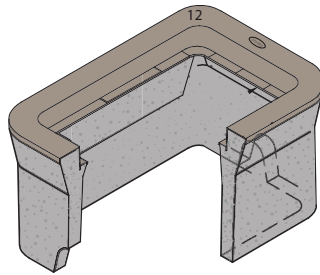
CHRISTY B12

CONCRETE
12" X 18"

B12 & B16



LIGHT DUTY
PEDESTRIAN / GREENBELT



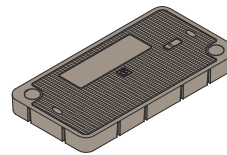
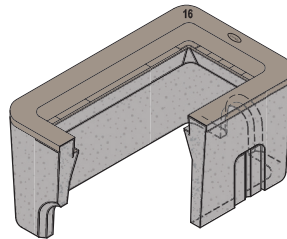
Rating	Part #	Desc 1	Desc 2	Color	Depth	Item Weight	Pallet Qty	Line Item Discount	Design Load	Quick Ship
Body - B12 with Plastic Cap										
Ped	1000050	Box, B12 Utility	B12BOX	Gray	12	114.0	20	OC01	300 lb/ft2	
Lid - B12										
Ped	1002630	Lid, B12 D - "Water"	B12D001	Gray	-	30.0	-	OC01	300 lb/ft2	
Ped	1002660	Lid, B12 G - "Water" w/CI Reader	B12G001	Gray	-	28.0	-	OC01	300 lb/ft2	
Ped	1002700	Lid, B12 P - "Water" w/Probe (Corner)	B12P001-T	Gray	-	30.0	-	OC01	300 lb/ft2	
Ped	1002710	Lid, B12 S - "Water" less R/L	B12S-201	Gray	-	34.0	-	OC01	300 lb/ft2	

CHRISTY B16

CONCRETE
11" X 21"



LIGHT DUTY
PEDESTRIAN / GREENBELT



Rating	Part #	Desc 1	Desc 2	Color	Depth	Item Weight	Pallet Qty	Line Item Discount	Design Load	Quick Ship
Body - B16 with Plastic Cap										
Ped	1000075	Box, B16 Utility	B16BOX	Gray	12	124.0	20	OC01	300 lb/ft2	
Lid - N16 with Plastic Cap										
Ped	1002770	Lid, B16 G - "Water" w/CI Reader	B16G001	Gray	-	31.0	-	OC01	300 lb/ft2	
Ped	1020590	Lid, N16 R - "Water"	N16R001	Gray	-	31.0	-	OC01	300 lb/ft2	
Ped	1020610	Lid, N16 RP - "Water" w/Probe (Corner)	N16RP001-T	Gray	-	31.0	-	OC01	300 lb/ft2	

CHRISTY

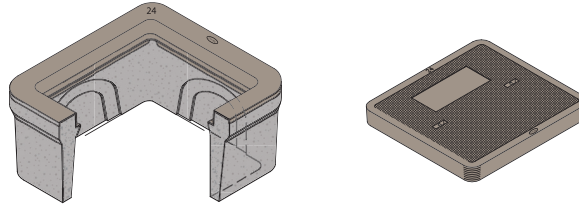
*Products are rated by the lowest component rating. A tier 15 cover with a tier 22 body is rated tier 15. A tier 22 cover with a tier 22 body is rated tier 22.

CHRISTY B24

CONCRETE
18" X 19"



LIGHT DUTY
PEDESTRIAN / GREENBELT



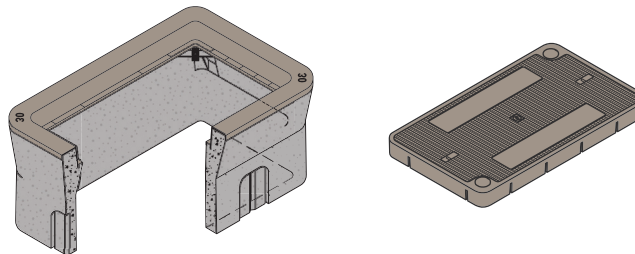
Rating	Part #	Desc 1	Desc 2	Color	Depth	Item Weight	Pallet Qty	Line Item Discount	Design Load	Quick Ship
Body - B24 with Plastic Cap										
Ped	1000110	Box, B24 Dual Utility	B24BOX	Gray	12	132.0	12	OC01	300 lb/ft2	
Lid - B24										
Ped	1003630	Lid, B24 D - "Water"	B24D001	Gray	-	58.0	-	OC01	300 lb/ft2	
Ped	1003650	Lid, B24 E Less R/L	B24E-2	Gray	-	58.0	-	OC01	300 lb/ft2	
Ped	1003680	Lid, B24 G - "Water" w/CI Reader	B24G001	Gray	-	54.0	-	OC01	300 lb/ft2	
Ped	1003710	Lid, B24 P - Water w/2 Probes **	B24P2-001	Gray	-	58.0	-	OC01	300 lb/ft2	

CHRISTY B30

CONCRETE
13" X 24"



LIGHT DUTY
PEDESTRIAN / GREENBELT



Rating	Part #	Desc 1	Desc 2	Color	Depth	Item Weight	Pallet Qty	Line Item Discount	Design Load	Quick Ship
Body - B30 with Plastic Cap										
Ped	1000114	Box, B30 Utility	B30BOX	Gray	12	134.0	16	OC01	300 lb/ft2	
Lid - N30 with Plastic Cap										
Ped	1004320	Lid, B30 E Less R/L	B30E	Gray	-	50.0	-	OC01	300 lb/ft2	
Ped	1004350	Lid, B30 G - "Water" w/CI Reader	B30G001	Gray	-	47.0	-	OC01	300 lb/ft2	

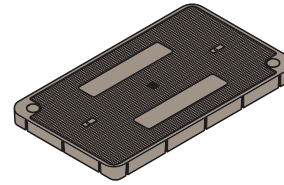
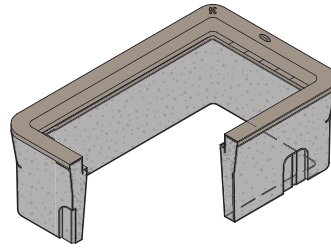
CHRISTY N36

CONCRETE
17" X 30"

N36 & B65



LIGHT DUTY
PEDESTRIAN / GREENBELT



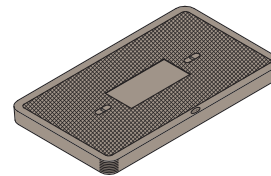
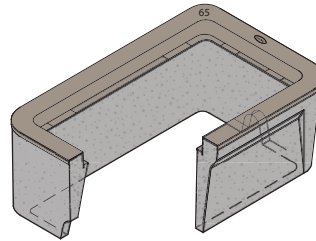
Rating	Part #	Desc 1	Desc 2	Color	Depth	Item Weight	Pallet Qty	Line Item Discount	Design Load	Quick Ship
Body - N36 with Plastic Cap										
Ped	1000155	Box, N36 Utility	N36BOX	Gray	12	174.0	8.0	OC01	300 lb/ft2	
Lid - N36 with Plastic Cap										
Ped	1005810	Lid, B36 E Less R/L	B36E	Gray	-	90.0	-	OC01	300 lb/ft2	
Ped	1005870	Lid, B36 G - "Water" w/CI Reader	B36G001	Gray	-	85.0	-	OC01	300 lb/ft2	

CHRISTY B65

CONCRETE
15" X 27"



LIGHT DUTY
PEDESTRIAN / GREENBELT



Rating	Part #	Desc 1	Desc 2	Color	Depth	Item Weight	Pallet Qty	Line Item Discount	Design Load	Quick Ship
Body - B65 with Plastic Cap										
Ped	1000190	Box, B65 Utility	B65BOX	Gray	12	164.0	8	OC01	300 lb/ft2	
Lid - B65										
Ped	1006740	Lid, B65 D - "Water" *	B65D001	Gray	-	65.0	-	OC01	300 lb/ft2	
Ped	1006770	Lid, B65 E Less R/L	B65E-2	Gray	-	71.0	-	OC01	300 lb/ft2	
Ped	1006780	Lid, B65 G - "Water" w/CI Reader **	B65G001	Gray	-	65.0	-	OC01	300 lb/ft2	
Ped	1006801	Lid, B65 P - "Water" w/Flexnet Probe **	B65P001-F	Gray	-	65.0	-	OC01	300 lb/ft2	

CHRISTY

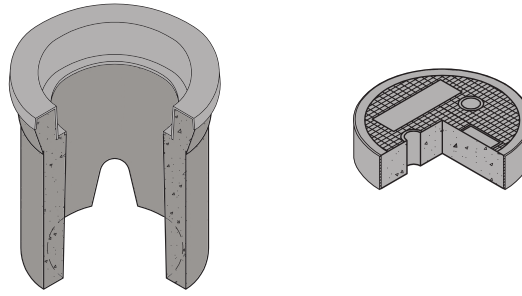
*Products are rated by the lowest component rating. A tier 15 cover with a tier 22 body is rated tier 15. A tier 22 cover with a tier 22 body is rated tier 22.

CHRISTY F08

CONCRETE
9" DIAMETER



LIGHT DUTY
PEDESTRIAN / GREENBELT



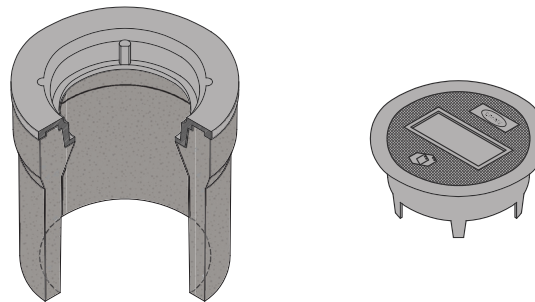
Rating	Part #	Desc 1	Desc 2	Color	Depth	Item Weight	Pallet Qty	Line Item Discount	Design Load	Quick Ship
Body - F08										
Ped	1000370	Box, F08 Curb Valve	F08BOX	Gray	12	34.0	48	OC01	300 lb/ft2	
Lid - F08										
Ped	1008970	Lid, F08 R - "Water"	F08R001	Gray	-	9.0	-	OC01	300 lb/ft2	

CHRISTY G03

CONCRETE
10" DIAMETER



TRAFFIC RATED
AASHTO H20



Rating	Part #	Desc 1	Desc 2	Color	Depth	Item Weight	Pallet Qty	Line Item Discount	Design Load	Quick Ship
Body - G03										
Traffic	1000401	Box, G03T Bolt Down Traffic Valve	G03TBOX	Gray	12	72	36	OC01	16000	
Lid - G03										
Traffic	3000600	Lid, G03 C - "Water"	G03C001IMPT	Black	-	15	-	OC01	16000	

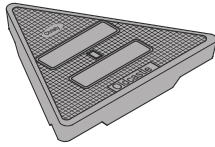
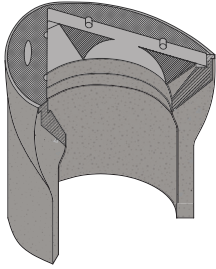
CHRISTY G04

CONCRETE
9" TRIANGULAR

G04 & G05



TRAFFIC RATED
AASHTO H20



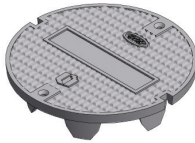
Rating	Part #	Desc 1	Desc 2	Color	Depth	Item Weight	Pallet Qty	Line Item Discount	Design Load	Quick Ship
Body - G04										
Traffic	1000405	Box, G04 Traffic Valve	G04BOX	Gray	12	66	36.0	OC01	16000	
Lid - G04										
Traffic	3000670	Lid, G04 C - "Water"	G04C001	Black	-	15	-	OC01	16000	

CHRISTY G05

CONCRETE
11" DIAMETER



TRAFFIC RATED
AASHTO H20



Rating	Part #	Desc 1	Desc 2	Color	Depth	Item Weight	Pallet Qty	Line Item Discount	Design Load	Quick Ship
Body - G05										
Traffic	1000415	Box, G05 T Bolt Down Traffic Valve	G05TBOX	Gray	12	63	36.0	OC01	16000	
Lid - G05										
Traffic	3001090	Lid, G05 CT Bolt Down - "Water"	G05CT001	Black	-	10	-	OC01	16000	

CHRISTY

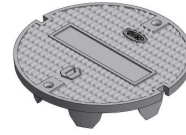
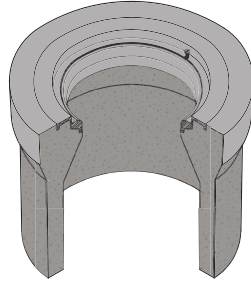
*Products are rated by the lowest component rating. A tier 15 cover with a tier 22 body is rated tier 15. A tier 22 cover with a tier 22 body is rated tier 22.

CHRISTY G08

CONCRETE
11" DIAMETER



TRAFFIC RATED
AASHTO H20



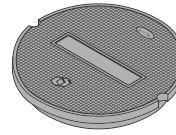
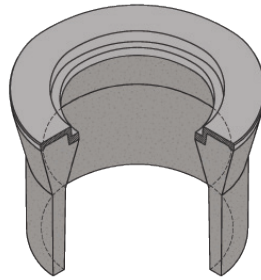
Rating	Part #	Desc 1	Desc 2	Color	Depth	Item Weight	Pallet Qty	Line Item Discount	Design Load	Quick Ship
Body - G08										
Traffic	1000435	Box, G08 T Bolt Down Traffic Valve	G08TBOX	Gray	12	94	10.0	OC01	16000	
Lid - G08										
Traffic	3001100	Lid, G05 CT Bolt Down - No Mark	G05CT000	Black	-	10	-	OC01	16000	

CHRISTY G12

CONCRETE
13" DIAMETER



TRAFFIC RATED
AASHTO H20



Rating	Part #	Desc 1	Desc 2	Color	Depth	Item Weight	Pallet Qty	Line Item Discount	Design Load	Quick Ship
Body - G12										
Traffic	1000450	Box, G12 Traffic Valve	G12BOX	Gray	12	112	10.0	OC01	16000	
Lid - G12										
Traffic	3001160	Lid, G12 C - "Water"	G12C001	Black	-	25	-	OC01	16000	

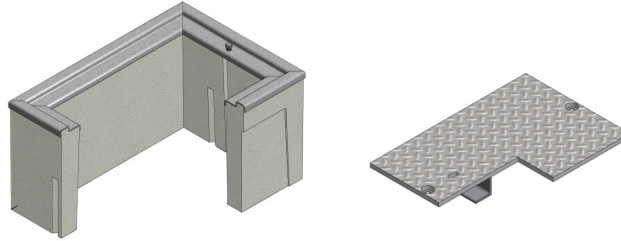
CHRISTY B1017

CONCRETE
10" X 17"

B1017 & B1324



TRAFFIC RATED
AASHTO H20



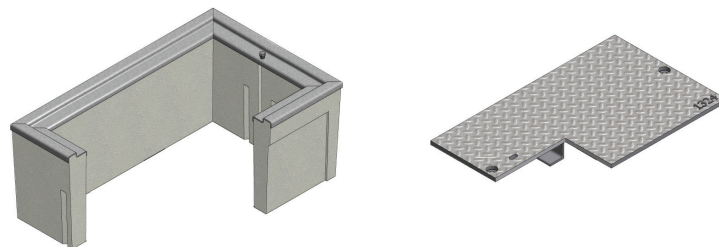
Rating	Part #	Desc 1	Desc 2	Color	Depth	Item Weight	Pallet Qty	Line Item Discount	Design Load	Quick Ship
Body - B1017										
Traffic	1000275	Box, B1017 Utility H20 Load	B1017BOX	Gray	12	136	20.0	OC01	16000	
Lid - B1017										
Traffic	2000520	Cover, B1017 51GH - "Water" w/Reader	B101751GH001	Steel	-	45	-	OC01	16000	
Traffic	2000690	Cover, B1017 51JH - "Water"	B101751JH001	Steel	-	40	-	OC01	16000	

CHRISTY B1324

CONCRETE
13" X 24"



TRAFFIC RATED
AASHTO H20



Rating	Part #	Desc 1	Desc 2	Color	Depth	Item Weight	Pallet Qty	Line Item Discount	Design Load	Quick Ship
Body - B1324										
Traffic	1000285	Box, B1324 Utility H20 Load	B1324BOX	Gray	12	168	16.0	OC01	16000	
Lid - B1324										
Traffic	2000920	Cover, B1324 51GH - "Water" w/Reader	B132451GH001	Steel	-	68	-	OC01	16000	
Traffic	2001120	Cover, B1324 51JH - "Water"	B132451JH001	Steel	-	63	-	OC01	16000	

CHRISTY

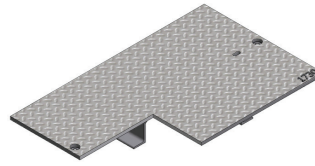
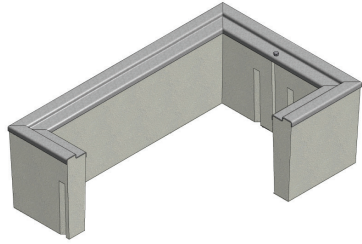
*Products are rated by the lowest component rating. A tier 15 cover with a tier 22 body is rated tier 15. A tier 22 cover with a tier 22 body is rated tier 22.

CHRISTY B1730

CONCRETE
17" X 30"



TRAFFIC RATED
AASHTO H20



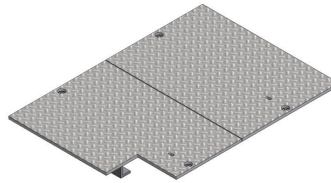
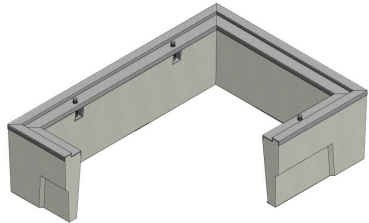
Rating	Part #	Desc 1	Desc 2	Color	Depth	Item Weight	Pallet Qty	Line Item Discount	Design Load	Quick Ship
Body - B1730										
Traffic	1000295	Box, B1730 Utility H20 Load	B1730BOX	Gray	12	280	6.0	OC01	16000	
Lid - B1730										
Traffic	2001730	Cover, B1730 51GH - "Water" w/Reader	B173051GH001	Steel	-	109	-	OC01	16000	
Traffic	2001880	Cover, B1730 51JH - "Water"	B173051JH001	Steel	-	111	-	OC01	16000	

CHRISTY B2436

CONCRETE
24" X 36"



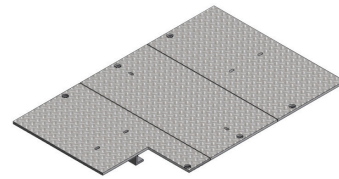
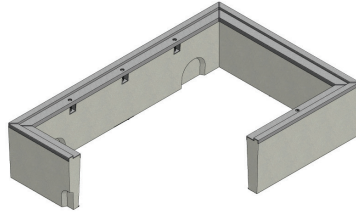
TRAFFIC RATED
AASHTO H20



Rating	Part #	Desc 1	Desc 2	Color	Depth	Item Weight	Pallet Qty	Line Item Discount	Design Load	Quick Ship
Body - B2436										
Traffic	1000305	Box, B2436 Utility H20 Load	B2436BOX	Gray	12	358	3.0	OC01	16000	
Lid - B2436										
Traffic	2002230	Cover, B2436 52JH - "Water"	B243652JH001	Steel	-	328	-	OC01	16000	



TRAFFIC RATED
AASHTO H20

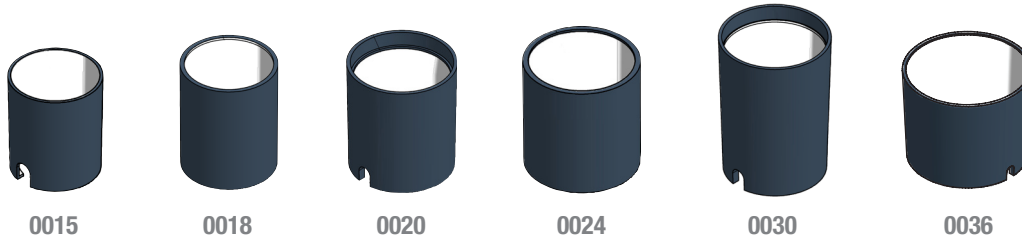


Rating	Part #	Desc 1	Desc 2	Color	Depth	Item Weight	Pallet Qty	Line Item Discount	Design Load	Quick Ship
Body - B3048										
Traffic	1000315	Box, B3048 Utility H20 Load	B3048BOX	Gray	12	458	3	OC01	16000	
Extension - B3048										
Traffic	1000320	Extension, B3048 X 12"	B3048X12	Gray	12	458	3	OC01	16000	
Lid - B3048										
Traffic	2002880	Cover, B3048 53JH - "Water"	B304853JH001	Gray	-	445	-	OC01	16000	

*Products are rated by the lowest component rating. A tier 15 cover with a tier 22 body is rated tier 15. A tier 22 cover with a tier 22 body is rated tier 22.



MEDIUM DUTY
ANSI/SCTE TIER 5, 8, AND 15



Rating	Part #	Desc 1	Desc 2	Color	Depth	Item Weight	Pallet Qty	Line Item Discount	Design Load	Quick Ship
Body - 0015 HeavyWall Meter Pit										
Med	00152001	0015-14 B Body B-W 2 Mshl	-	Black	14	9.0	-	OC04	20K	
Med	00152002	0015-18 B Body B-W 2 MsHI	-	Black	18	11.0	-	OC04	20K	
Med	00152003	0015-24 B Body B-W 2 MsHI	-	Black	24	13.5	-	OC04	20K	
Med	00152007	0015-18 S Body B-W 2 MsHI	Straight Wall	Black	18	11.0	-	OC04	20K	
Med	00152009	0015-18 B Body B-W 0 MsHI	Special MSD	Black	18	8.5	-	OC04	20K	
Body - 0018 HeavyWall Meter Pit										
Med	00182001	0018-18 B Body B-W 2 MsHI	-	Black	18	14.0	-	OC04	20K	
Med	00182002	0018-24 B Body B-W 2 MsHI	-	Black	24	18.0	-	OC04	20K	
Med	00182003	0018-30 B Body B-W 2 MsHI	-	Black	30	21.0	-	OC04	20K	
Med	00182004	0018-36 B Body B-W 2 MsHI	-	Black	36	25.0	-	OC04	20K	
Med	00182005	0018-48 B Body B-W 2 MsHI	-	Black	48	35.0	-	OC04	20K	
Med	00182006	0018-60 B Body B-W 2 MsHI	-	Black	60	49.0	-	OC04	20K	
Med	00182007	0018-20 B Body B-W 2 MsHI	24 in. Dia Base Inverted	Black	20	20.5	-	OC04	20K	
Med	00182009	0018-30 B Body S-W 2 MsHI	Straight Wall Recd Flange UBF	Black	30	21.0	-	OC04	20K	
Med	00182038	0018-20 B Body B-W 0 MsHI	24 in. Base Tapered	Black	20	20.5	-	OC04	20K	
Body - 0020 HeavyWall Meter Pit										
Med	00202006	0020-24 B Body B-W 2 MsHI	-	Black	24	20.5	-	OC04	20K	
Med	00202007	0020-30 B Body B-W 2 MsHI	-	Black	30	23.5	-	OC04	20K	
Med	00202008	0020-36 B Body B-W 2 MsHI	-	Black	36	28.5	-	OC04	20K	
Med	00202009	0020-48 B Body B-W 2 MsHI	-	Black	48	50.0	-	OC04	20K	
Med	00202010	0020-60 B Body B-W 2 MsHI	-	Black	60	60.0	-	OC04	20K	
Med	00202011	0020-72 B Body B-W 2 MsHI	-	Black	72	80.0	-	OC04	20K	
Med	00202013	0020-30 S Body B-W 2 MsHI	Straight Wall	Black	30	23.5	-	OC04	20K	
Med	00202014	0020-36 B Body B-W 2 MsHI	Inverted Raised MsHI	Black	36	29.0	-	OC04	20K	
Med	00202017	0020-20 B Body B-W 2 MsHI	-	Black	20	19.0	-	OC04	20K	
Body - 0024 HeavyWall Meter Pit										
Med	00242001	0024-18 B Body B-W 2 MsHI	-	Black	18	18.0	-	OC04	20K	
Med	00242002	0024-24 B Body B-W 2 MsHI	-	Black	24	23.5	-	OC04	20K	
Med	00242003	0024-30 B Body B-W 2 MsHI	-	Black	30	33.0	-	OC04	20K	
Med	00242004	0024-36 B Body B-W 2 MsHI	-	Black	36	39.0	-	OC04	20K	
Med	00242005	0024-48 B Body B-W 2 MsHI	-	Black	48	49.0	-	OC04	20K	
Med	00242006	0024-55 S Body B-W 0 MsHI	Straight Wall	Black	55	57.0	-	OC04	20K	
Med	00242022	0024-24 B Body B-W 2 MsHI w/ ring	548 Cast Iron Ring	Black	24	65.5	-	OC04	20K	
Body - 0030 HeavyWall Meter Pit										
Med	00302002	0030-24 B Body B-W 2 MsHI	-	Black	24	35.0	-	OC04	20K	
Med	00302003	0030-30 B Body B-W 2 MsHI	-	Black	30	42.5	-	OC04	20K	
Med	00302004	0030-36 B Body B-W 2 MsHI	-	Black	36	52.0	-	OC04	20K	
Med	00302005	0030-51 B Body B-W 2 MsHI	-	Black	51	67.0	-	OC04	20K	
Med	00302014	0030-24 CB Body B-W 2 MsHI	EJIW #5 P Ring	Black	24	31.0	-	OC04	20K	
Med	00302015	0030-18 CB Body B-W 2 MsHI	EJIW #5 P Ring	Black	18	20.0	-	OC04	20K	
Body - 0036 HeavyWall Meter Pit										
Med	00362002	0036-30 B Body B-W 2 MsHI	-	Black	30	49.0	-	OC04	20K	
Med	00362003	0036-36 B Body B-W 2 MsHI	-	Black	36	60.0	-	OC04	20K	
Med	00362004	0036-48 B Body B-W 2 MsHI	-	Black	48	70.0	-	OC04	20K	
Body - 1900 HeavyWall Meter Pit										
Med	19102001	1910-10 Body B-W 2 MsHI	15P Oval	Black	10	10.0	-	OC04	20K	
Med	19102002	1910-12 Body B-W 2 MsHI	15P Oval	Black	12	12.0	-	OC04	20K	
Med	19112001	1911-10 Body B-W 2 MsHI	Oval	Black	10	7.5	-	OC04	20K	
Med	30002002	30 in. Body Black 2 MsHI	Non Round Dallas Ring	Black	30	22.0	-	OC04	20K	

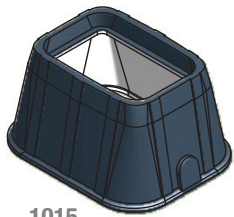
CARSON HEAVYWALL RECTANGLE BC

RECTANGLE BC

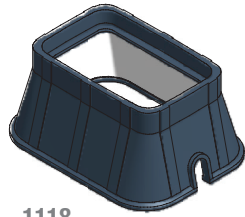
POLYETHYLENE BLEND



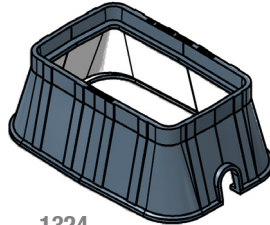
MEDIUM DUTY
ANSI/SCTE TIER 5, 8, AND 15



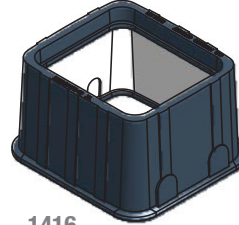
1015



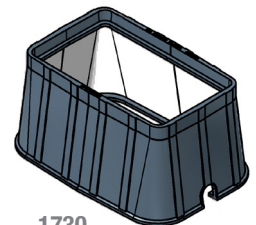
1118



1324



1416



1730

Rating	Part #	Desc 1	Desc 2	Color	Depth	Item Weight	Pallet Qty	Line Item Discount	Design Load	Quick Ship
Body - 1015 BC Meter Box										
Med	10152021	1015-24 BC Body B-W 2 MsHI	SFM Cover Prov	Black	24	27.0	12	OC04	20K	Yes
Med	10152023	1015-12 BC Body B-W 2 MsHI	SFM Cover Provision	Black	12	14.0	18	OC04	20K	Yes
Med	10152028	1015-18 BC Body B-W 2 MsHI	SFM Cover Provision	Black	18	20.0	12	OC04	20K	Yes
Body - 1118 BC Meter Box										
Med	11182006	1118-12 BC Body B-W 2 Mshl	-	Black	12	15.0	20	OC04	20K	Yes
Med	11182007	1118-26 BC Body B-W 2 Mshl	-	Black	26	28.0	4	OC04	20K	Yes
Body - 1324 BC Meter Box										
Med	13242034	1324-12 BC Body B-W 2 Mshl	-	Black	12	25.5	16	OC04	20K	
Med	13242047	1324-12 BC Body B-W 0 MsHI	-	Black	12	25.5	16	OC04	20K	
Body - 1400 BC Meter Box										
Med	14162001	1416-12 BC Body B-W 0 MsHI	-	Black	12	13.0	12	OC04	20K	Yes
Med	14162003	1416-12 BC Body B-W 3 MsHI	-	Black	12	13.0	12	OC04	20K	
Med	14222001	1422-24 BC Body B-W	2 MsHI	Black	24	36.0	10	OC04	20K	
Body - 1730 BC Meter Box										
Med	17302043	1730-18 BC Body B-W 2 MsHI	-	Black	18	24.0	4	OC04	20K	Yes

*Products are rated by the lowest component rating. A tier 15 cover with a tier 22 body is rated tier 15. A tier 22 cover with a tier 22 body is rated tier 22.

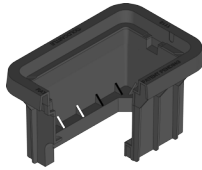
HEAVYWALL



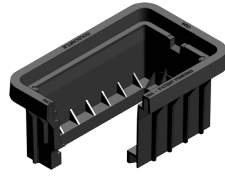
MEDIUM DUTY
ANSI/SCTE TIER 5, 8, AND 15



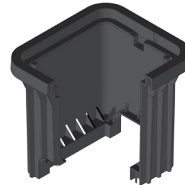
1015



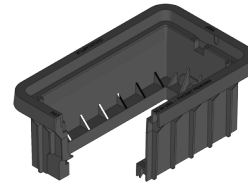
1118



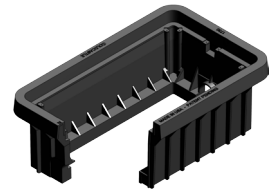
1324



1416



1527



1730

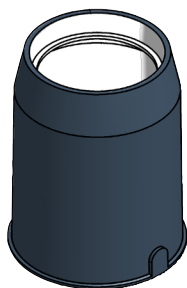
Rating	Part #	Desc 1	Desc 2	Color	Depth	Item Weight	Pallet Qty	Line Item Discount	Design Load	Quick Ship
Body - 1015 BCF										
Med	10152500	Body, HW1015-12	BCF,BLK,2MH,SW	Black	12	8.8	12	OC04	20K	
Med	10152520	Body, HW1015-18	BCF,BLK,2MH,SW	Black	18	11.5	18	OC04	20K	
Body - 1118 BCF										
Med	11182500	Body, HW1118-12	BCF,BLK,2MH,SW	Black	12	10.5	12	OC04	20K	
Med	11182510	Body, HW1118-12	BCF,BLK,0MH,SW	Black	12	10.5	12	OC04	20K	
Med	11182520	Body, HW1118-18	BCF,BLK,2MH,SW	Black	18	14.0	18	OC04	20K	
Body - 1324 BCF										
Med	13242500	Body, HW1324-12	BCF,BLK,2MH,SW	Black	12	14.5	12	OC04	20K	
Med	13242510	Body, HW1324-12	BCF,BLK,0MH,SW	Black	12	14.5	12	OC04	20K	
Med	13242520	Body, HW1324-18	BCF,BLK,2MH,SW	Black	18	19.0	18	OC04	20K	
Med	13242530	Body, HW1324-18	BCF,BLK,0MH,SW	Black	18	19.0	18	OC04	20K	
Body - 1416 BCF										
Med	14162500	Body,HW,1416-12	BCF,BLK,2MH,SW	Black	12	11.5	12	OC04	20K	
Med	14162530	Body,HW,1416-12	BCF,BLK,3MH,SW	Black	12	11.5	18	OC04	20K	
Med	14162520	Body,HW,1416-18	BCF,BLK,2MH,SW	Black	18	16.3	12	OC04	20K	
Med	14162540	Body,HW,1416-18	BCF,BLK,3MH,SW	Black	18	16.3	18	OC04	20K	
Body - 1527 BCF										
Med	15272500	Body, HW1527-12	BCF,BLK,2MH,SW	Black	12	16.8	12	OC04	20K	
Med	15272520	Body, HW1527-18	BCF,BLK,2MH,SW	Black	18	22.3	18	OC04	20K	
Body - 1730 BCF										
Med	17302500	Body, HW1730-12	BCF,BLK,2MH,SW	Black	12	20.0	12	OC04	20K	
Med	17302510	Body, HW1730-12	BCF,BLK,0MH,SW	Black	12	20.0	12	OC04	20K	
Med	17302520	Body, HW1730-18	BCF,BLK,2MH,SW	Black	18	26.5	18	OC04	20K	
Med	17302530	Body, HW1730-18	BCF,BLK,0MH,SW	Black	18	26.5	18	OC04	20K	

CARSON HEAVYWALL BULLET-STYLE METER PITS

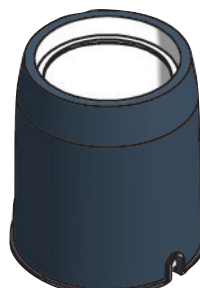
POLYETHYLENE BLEND



MEDIUM DUTY
ANSI/SCTE TIER 5, 8, AND 15



0018



0020

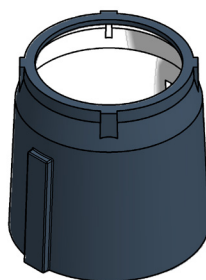
Rating	Part #	Desc 1	Desc 2	Color	Depth	Item Weight	Pallet Qty	Line Item Discount	Design Load	Quick Ship
Body - 0018 Bullet-Style Round										
Med	00182015	0018-36 Body B-W 2 MsHI	22 in. Base Bullet Style	Black	36	33.0	-	OC04	20K	
Med	00182032	0018-30 Body B-W 2 MsHI	22 in. Base Bullet Style	Black	30	33.0	-	OC04	20K	
Med	00182033	0018-24 Body B-W 2 MsHI	22 in Base Bullet Style	Black	24	22.0	-	OC04	20K	
Body - 0020 Bullet-Style Round										
Med	00202001	0020-30 Body B-W 2 MsHI	24 in. Base Bullet Style	Black	30	33.0	-	OC04	20K	
Med	00202002	0020-36 Body B-W 2 MsHI	24 in. Base Bullet Style	Black	36	48.0	-	OC04	20K	
Med	00202003	0020-42 Body B-W 2 MsHI	24 in. Base Bullet Style	Black	42	40.0	-	OC04	20K	
Med	00202004	0020-48 Body B-W 2 MsHI	24 in. Base Bullet Style No T-	Black	48	54.5	-	OC04	20K	
Med	00202023	0020-64 Body B-W 0 MsHI	Bullet Style T-Pack Removed H	Black	64	68.0	-	OC04	20K	
Med	00202037	0020-24 Body B-W 2 MsHI	24 in. Base Bullet Style	Black	24	23.0	-	OC04	20K	

CARSON HEAVYWALL D-STYLE METER PIT

POLYETHYLENE BLEND











MEDIUM DUTY
ANSI/SCTE TIER 5, 8, AND 15



Rating	Part #	Desc 1	Desc 2	Color	Depth	Item Weight	Pallet Qty	Line Item Discount	Design Load	Quick Ship
Body - 0018 D-Style Round										
Med	00182011	0018-14 D Body B-W 0 MsHI	1814D	Black	14	10.5	-	OC04	20K	
Med	00182012	0018-18 D Body B-W 0 MsHI	181824D	Black	18	15.0	-	OC04	20K	
Med	00182014	0018-18 D Body B-W 0 MsHI	1818D	Black	18	13.0	-	OC04	20K	
Med	00182017	0018-24 D Body B-W 0 MsHI	182424D	Black	24	19.5	-	OC04	20K	
Med	00182020	0018-24 D Body B-W 0 MsHI	1824D	Black	24	17.0	-	OC04	20K	
Med	00182040	0018-14 D Body B-W 0 MsHI w/ ring	#34-#4 CI Ring 1814D	Black	14	49.5	-	OC04	20K	
Med	00182043	0018-18 D Body B-W 0 MsHI w/ ring	#34-#4 CI Ring 1818D	Black	18	52.0	-	OC04	20K	
Med	00182046	0018-24 D Body B-W 0 MsHI w/ ring	#34-#4 CI Ring 182424D	Black	24	58.5	-	OC04	20K	
Med	00182048	0018-24 D Body B-W 0 MsHI w/ ring	#34-#4 CI Ring 1824D	Black	24	56.0	-	OC04	20K	

*Products are rated by the lowest component rating. A tier 15 cover with a tier 22 body is rated tier 15. A tier 22 cover with a tier 22 body is rated tier 22.

CARSON HEAVYWALL EXTENSIONS

Rating	Part #	Desc 1	Desc 2	Color	Depth	Item Weight	Pallet Qty	Line Item Discount	Design Load	Quick Ship
Extension - 0018 Round										
Med	00183001	0018-3 B Ext B-W	-	Black	3	4.5	-	OC04	20K	
Med	00183002	0018-6 B Ext B-W	-	Black	6	6.5	-	OC04	20K	
Med	00183003	0018-12 B Ext B-W	-	Black	12	10.5	-	OC04	20K	
Med	00183004	0018-22 B Ext B-W	22 Degree Off Grade	Black	22	6.5	-	OC04	20K	
Extension - 0020 Round										
Med	00203001	0020-2 B Ext B-W	-	Black	2	4.5	-	OC04	20K	
Med	00203002	0020-3 B Ext B-W	-	Black	3	6.0	-	OC04	20K	
Med	00203003	0020-4 B Ext B-W	-	Black	4	6.0	-	OC04	20K	
Med	00203004	0020-6 B Ext B-W	-	Black	6	7.0	-	OC04	20K	
Med	00203005	0020-8 B Ext B-W	-	Black	8	8.0	-	OC04	20K	
Med	00203006	0020-12 B Ext B-W	-	Black	12	10.0	-	OC04	20K	
Med	00203007	0020-7 B Ext B-W	7 Degree Off Grade	Black	7	7.5	-	OC04	20K	
Med	00203008	0020-15 B Ext B-W	15 Degree Off Grade	Black	15	13.0	-	OC04	20K	
Med	00203009	0020-22 B Ext B-W	22 Degree Off Grade	Black	22	15.0	-	OC04	20K	
Med	00243001	0024-3 B Ext B-W	-	Black	3	8.0	-	OC04	20K	
Extension - 0020 Round										
Med	00303001	0030-3 B Ext B-W	-	Black	3	15.0	-	OC04	20K	
Med	00363001	0036-3 B Ext B-W	-	Black	3	7.0	-	OC04	20K	

CARSON HEAVYWALL ACCESSORIES

Rating	Part #	Desc 1	Desc 2	Color	Depth	Item Weight	Pallet Qty	Line Item Discount	Design Load	Quick Ship
Frame										
-	00187002	0018 B Frame Raised Lid Rest	T Style Cover	-	-	19.5	-	OC04	-	
-	00187006	0018 B Flat Frame Lid CI	-	-	-	29.0	-	OC04	-	
-	00207004	0020 B Frame Raised Lid Rest	-	-	-	32.0	-	OC04	-	
-	00207005	0020 B Frame Recessed Lid Rest	-	-	-	26.0	-	OC04	-	
Ring										
-	00007001	20 in. CI Mon Riser Ring	-	-	-	36.0	-	OC04	-	
-	00247001	0024 B 18 in. CI Adapter Ring	Adpt 18 in. Cvr to 24 in. Body	-	-	39.0	-	OC04	-	
-	00307002	0030 B 20 in. CI Adapter Ring	Adpt 20 in. Cvr to 30 in. Body	-	-	66.0	-	OC04	-	
-	00367001	0036 B 20 in. CI Adapter Ring	Adpt 20 in. Cvr to 36 in. Body	-	-	119.0	-	OC04	-	
Other										
-	00184028	1820/2420 Lid3 CI 12-5/8"	w/Lock, Fits CI Ring 359	-	-	15.0	-	OC04	-	
-	00184029	1820/2420 Lid3 CI 12-5/8"	No Lock, Fits CI Ring 359	-	-	15.0	-	OC04	-	
Thermal Pack										
-	00187004	0018 B Thermo Pack Insert	10.25 ID with 2 Holes	-	-	1.0	-	OC04	-	
-	00207003	0020 B Thermo Pack Insert	Removable Center	-	-	1.0	-	OC04	-	
-	00207007	0020 B Thermo Pack Insert	10.25 ID with 2 Holes	-	-	1.0	-	OC04	-	

CARSON HEAVYWALL COVERS

COVERS

Rating	Part #	Desc 1	Desc 2	Color	Depth	Item Weight	Pallet Qty	Line Item Discount	Design Load	Quick Ship
Plastic Covers										
Ped	12004001	1200 Fish Cover Black Water	no Slide Lock	Black	-	2.8	-	OC06	300 lb/ft2	
Ped	12004004	1200 Fish Cover Blue Water	with Slide Lock	Blue	-	2.8	-	OC06	300 lb/ft2	
Ped	12004100	Center Lid Plastic Wtr Mtr	Small Penta Nut	Black	-	3.5	-	OC06	300 lb/ft2	
Cast Iron Covers										
Med	00004020	20 in. Monitor Lid CI Wtr Mtr	Small Lock Nut TRH	Black	-	44.0	-	OC04	20K	
Med	00184011	0018 B Flat Cover CI Wtr Mtr	-	Black	-	34.0	-	OC04	20K	
Med	00184012	0018 B T Cover CI Wtr Mtr	Raised Frm Lckng Lid SNut TRH	Black	-	34.0	-	OC04	20K	
Med	00204008	0020 B Fish Cover CI Wtr Mtr	Recesd Frm Drop-In Lid	Black	-	38.0	-	OC04	20K	
Med	00244001	0024 B Cover CI Wtr Mtr	20 in. Monitor Style CI Lid	Black	-	45.0	-	OC04	20K	
Med	00364001	0036 B Cover CI Wtr Mtr	20 in. Monitor Style CI Lid	Black	-	200.0	-	OC04	20K	
Med	10154106	1015 BC Fish Cover CI Sewer	Solid	Black	-	18.3	-	OC04	20K	
Med	14164001	1416 BC Fish Cover CI Wtr Mtr	Max View Reader Door	Black	-	28.0	-	OC04	20K	
Med	14164006	1416 BC Fish Cover CI Wtr Mtr	Solid DOM	Black	-	35.0	-	OC04	20K	
Med	19104004	1910 Fish Cover CI Wtr Mtr	Oval (10 12 & 18 Bx) DOM	Black	-	7.0	-	OC04	20K	
Ductile Iron Covers										
Med	10154080	1015 BC Fish Cover DI Wtr Mtr	Solid	Black	-	19.2	-	OC04	20K	
Med	10154081	1015 BC Fish Cover DI Wtr Mtr	Max View Reader Door	Black	-	16.0	-	OC04	20K	
Med	10154082	1015 BC Fish Cover DI Wtr Mtr	Solid DOM	Black	-	26.0	-	OC04	20K	
Med	10154083	1015 BC Fish Cover DI Wtr Mtr	Bolt-in Reader Door - DOM	Black	-	17.0	-	OC04	20K	
Med	11184019	1118 BC Fish Cover DI Wtr Mtr	Solid	Black	-	22.0	-	OC04	20K	
Med	11184020	1118 BC Fish Cover DI Wtr Mtr	Max View Reader Door	Black	-	22.0	-	OC04	20K	
Med	11184048	1118 BC Fish Cover DI Wtr Mtr	Standard Reader Door DOM	Black	-	23.0	-	OC04	20K	
Med	11184049	1118 BC Fish Cover DI Wtr Mtr	Solid DOM	Black	-	23.0	-	OC04	20K	
Med	11184058	1118 BC Fish Cover DI Wtr Mtr	Max View Reader Door TRH	Black	-	23.0	-	OC04	20K	
Med	11184073	1118 BC Fish Cover DI Sewer	Solid DOM	Black	-	23.0	-	OC04	20K	
Med	11184077	1118 BC Fish Cover DI Wtr Mtr	Solid TRH DOM	Black	-	23.0	-	OC04	20K	
Med	13244056	1324 BC Fish Cover DI Sewer	Solid DOM	Black	-	42.0	-	OC04	20K	
Med	13244284	1324 BC Fish Cover DI Wtr Mtr	Solid	Black	-	33.0	-	OC04	20K	
Med	13244285	1324 BC Fish Cover DI Wtr Mtr	Max View Reader Door	Black	-	33.0	-	OC04	20K	
Med	13244287	1324 BC Fish Cover DI Wtr Mtr	Solid DOM	Black	-	33.0	-	OC04	20K	
Med	13244299	1324 BC Fish Cover DI Wtr Mtr	Standard Reader Door DOM Ol St	Black	-	33.0	-	OC04	20K	
Med	13244301	1324 BC Fish Cover DI Wtr Mtr	Max View Reader Door TRH	Black	-	33.0	-	OC04	20K	
Med	13244305	1324 BC Fish Cover DI Wtr Mtr	Solid TRH	Black	-	30.0	-	OC04	20K	
Med	14164021	1416 BC Fish Cover DI Wtr Mtr	Standard Reader Door DOM	Black	-	30.9	-	OC04	20K	
Med	15274001	1527 BC Fish Cover DI Wtr Mtr	Solid	Black	-	46.0	-	OC04	20K	
Med	15274002	1527 BC Fish Cover DI Wtr Mtr	Max View Reader Door	Black	-	46.0	-	OC04	20K	
Med	17304268	1730 BC Fish Cover DI Wtr Mtr	Solid	Black	-	60.0	-	OC04	20K	
Med	17304269	1730 BC Fish Cover DI Wtr Mtr	Max View Reader Door	Black	-	69.0	-	OC04	20K	
Med	17304271	1730 BC Fish Cover DI Wtr Mtr	Solid DOM	Black	-	63.0	-	OC04	20K	
Med	17304282	1730 BC Fish Cover DI Wtr Mtr	Std Reader Door DOM Old Style	Black	-	69.0	-	OC04	20K	
Heavy Duty Plastic Covers										
Med	10154500	Lid, HD1015 'WATER METER'	BLK,FLD,CLK_002	Black	-	8.0	-	OC04	20K	
Med	10154503	Lid, HD1015 'WATER METER'	BLK,FLD,AMR,4.5_002	Black	-	8.0	-	OC04	20K	
Med	10154504	Lid, HD1015 'WATER METER'	BLK,FLD,AMR,3.0_002	Black	-	8.0	-	OC04	20K	
Med	11184500	Lid, HD1118 'WATER METER'	BLK,FLD,CLK_002	Black	-	11.0	-	OC04	20K	
Med	11184503	Lid, HD1118 'WATER METER'	BLK,FLD,AMR,4.5_002	Black	-	11.0	-	OC04	20K	
Med	11184504	Lid, HD1118 'WATER METER'	BLK,FLD,AMR,3.0_002	Black	-	11.0	-	OC04	20K	
Med	13244500	Lid, HD1324 'WATER METER'	BLK,FLD,CLK_002	Black	-	12.3	-	OC04	20K	
Med	13244502	Lid, HD1324 'WATER METER'	BLK,FLD,CIR_002	Black	-	12.3	-	OC04	20K	
Med	13244503	Lid, HD1324 'WATER METER'	BLK,FLD,AMR,4.5_002	Black	-	12.3	-	OC04	20K	
Med	13244504	Lid, HD1324 'WATER METER'	BLK,FLD,AMR,3.0_002	Black	-	12.3	-	OC04	20K	
Med	15274500	Lid, HD1527 'WATER METER'	BLK,FLD,CLK_002	Black	-	17.0	-	OC04	20K	
Med	15274502	Lid, HD1527 'WATER METER'	BLK,FLD,CIR_002	Black	-	17.0	-	OC04	20K	
Med	15274503	Lid, HD1527 'WATER METER'	BLK,FLD,AMR,4.5_002	Black	-	17.0	-	OC04	20K	
Med	15274504	Lid, HD1527 'WATER METER'	BLK,FLD,AMR,3.0_002	Black	-	17.0	-	OC04	20K	
Med	17304500	Lid, HD1730 'WATER METER'	BLK,FLD,CLK_002	Black	-	27.0	-	OC04	20K	
Med	17304502	Lid, HD1730 'WATER METER'	BLK,FLD,CIR_002	Black	-	27.0	-	OC04	20K	
Med	17304503	Lid, HD1730 'WATER METER'	BLK,FLD,AMR,4.5_002	Black	-	27.0	-	OC04	20K	
Med	17304504	Lid, HD1730 'WATER METER'	BLK,FLD,AMR,3.0_002	Black	-	27.0	-	OC04	20K	

*Products are rated by the lowest component rating. A tier 15 cover with a tier 22 body is rated tier 15. A tier 22 cover with a tier 22 body is rated tier 22.

HEAVYWALL

H-SERIES MARKING PLATE LIDS

Rating	Part #	Desc 1	Desc 2	Color	Depth	Item Weight	Pallet Qty	Line Item Discount	Design Load	Quick Ship
1118 - Marking Plate Lid										
T15	11184694	Lid, PC1118-T, T15 -SPECIAL w/MARKING PLATE	PC1118T-T15	Gray	-	20	60	OC03	15000	
T22	11184695	Lid, PC1118-T, T22 - SPECIAL w/MARKING PLATE	PC1118T-T22	Gray	-	28	60	OC03	22500	
1324 - Marking Plate Lid										
T15	13244694	Lid, PC1324-T, T15 -SPECIAL w/MARKING PLATE	PC1324T-T15	Gray	-	38	30	OC03	15000	
T22	13244695	Lid, PC1324-T, T22 - SPECIAL w/MARKING PLATE	PC1324T-T22	Gray	-	51	30	OC03	22500	
1730 - Marking Plate Lid										
T15	17304694	Lid, PC1730-T, T15 -SPECIAL w/MARKING PLATE	PC1730T-T15	Gray	-	62	25	OC03	15000	
T22	17304695	Lid, PC1730-T, T22 - SPECIAL w/MARKING PLATE	PC1730T-T22	Gray	-	85	25	OC03	22500	
2424 - Marking Plate Lid										
T15	24244694	Lid, PC2424-T, T15 -SPECIAL w/MARKING PLATE	PC2424T-T15	Gray	-	75	20	OC03	15000	
T22	24244695	Lid, PC2424-T, T22 - SPECIAL w/MARKING PLATE	PC2424T-T22	Gray	-	112	20	OC03	22500	
2436 - Marking Plate Lid										
T15	24364694	Lid, PC2436-T, T15 -SPECIAL w/MARKING PLATE	PC2436T-T15	Gray	-	150	10	OC03	15000	
T22	24364695	Lid, PC2436-T, T22 - SPECIAL w/MARKING PLATE	PC2436T-T22	Gray	-	204	10	OC03	22500	
3048 - Marking Plate Lid										
T15	30484694	Lid, PC3048-T, T15 -SPECIAL,2pc w/MARKING PLATE	PC3048T-T15	Gray	-	274	10	OC03	15000	
T22	30484695	Lid, PC3048-T, T22 - SPECIAL,2pc w/MARKING PLATE	PC3048T-T22	Gray	-	338	10	OC03	22500	
3636 - Marking Plate Lid										
T15	36364694	Lid, PC3636-T, T15 -SPECIAL w/MARKING PLATE	PC3636T-T15	Gray	-	235	5	OC03	15000	
T22	36364695	Lid, PC3636-T, T22 - SPECIAL w/MARKING PLATE	PC3636T-T22	Gray	-	265	5	OC03	15000	
4848 - Marking Plate Lid										
T15	48484694	Lid, PC4848-T, T15 -SPECIAL,2pc w/MARKING PLATE	PC4848T-T15	Gray	-	410	5	OC03	15000	
T22	48484695	Lid, PC4848-T, T22 - SPECIAL,2pc w/MARKING PLATE	PC4848T-T22	Gray	-	620	5	OC03	22500	

Standard Marking Plate: 4" x 8", 2 rows of lettering, max 13 characters each row. Options Available. Call Customer Service for Custom and Specialty Marking Orders.

SYNERTECH MARKING PLATE LIDS

Rating	Part #	Desc 1	Desc 2	Color	Depth	Item Weight	Pallet Qty	Line Item Discount	Design Load	Quick Ship
1118 - Marking Plate Lid										
T15	31059922	Lid, SYN1118 T T15 - SPECIAL w/MARKING PLATE	SYN1118T099	Gray	-	26	26	OC10	15000	
1212 - Marking Plate Lid										
T15	31109922	Lid, SYN1212 T T15 - SPECIAL w/MARKING PLATE	SYN1212T-T15 999	Gray	-	15	160	OC10	15000	
T22	31109832	Lid, SYN1212 T T22 - SPECIAL w/MARKING PLATE	SYN1212T-T22 999	Gray	-	15	160	OC10	15000	
1324 - Marking Plate Lid										
T15	31159922	Lid, SYN1324 T T15 - SPECIAL w/MARKING PLATE	SYN1324T099	Gray	-	42	65	OC10	15000	
1730 - Marking Plate Lid										
T15	31209922	Lid, SYN1730 T T15 - SPECIAL w/MARKING PLATE	SYN1730T099	Gray	-	64	33	OC10	15000	
2436 - Marking Plate Lid										
T22	31259922	Lid, SYN2436 T T22 - SPECIAL w/MARKING PLATE	SYN2436T099	Gray	-	125	20	OC10	22500	
3048 - Marking Plate Lid										
T22	31309922	Lid, SYN3048 T T22 - SPECIAL w/MARKING PLATE	SYN3048T099	Gray	-	193	12	OC10	22500	
3660 - Marking Plate Lid										
T22	31359922	Lid, SYN3660 T T22 - SPECIAL w/MARKING PLATE	SYN3660T099	3060	-	357	5	OC10	22500	

Standard Marking Plate: 4" x 8", 2 rows of lettering, max 13 characters each row. Options Available. Call Customer Service for Custom and Specialty Marking Orders.

H-SERIES & SYNERTECH MARKING PLATES

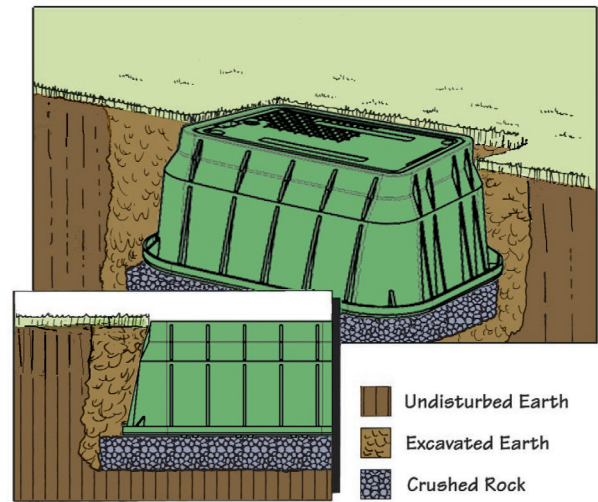
Rating	Part #	Desc 1	Desc 2	Color	Depth	Item Weight	Pallet Qty	Line Item Discount	Design Load	Quick Ship
Marking Plates										
-	31901000	Marking Plate-Blank	4"x8"	-	-	-	-	OC10	-	
-	31901010	Marking Plate-Electric	4"x8"	-	-	-	-	OC10	-	
-	31901030	Marking Plate-Traffic Signal	4"x8"	-	-	-	-	OC10	-	
-	31901040	Marking Plate-Street Lighting	4"x8"	-	-	-	-	OC10	-	
-	31901050	Marking Plate-High Voltage	4"x8"	-	-	-	-	OC10	-	
-	31901070	Marking Plate-Lighting	4"x8"	-	-	-	-	OC10	-	
Marking Plate Adhesive										
-	31900100	Sealant, Surebond SB-12 10.2oz Cartridge	10 Lid Coverage	-	-	-	-	OC09	-	

LIGHT DUTY PLASTIC PRODUCT

Typical grass surround installation

Crushed rock backfill is shown as specified in the Company's Installation Procedure. The tamped crushed rock supports the vault, preventing subsidence and allowing for drainage. The excavated spoils have been used for backfill.

Note the soil is free of rocks larger than three inches.

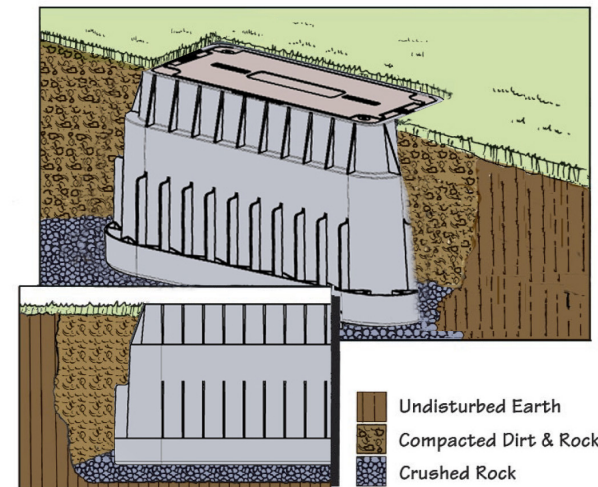


LIGHT DUTY HYBRID PRODUCT

Alternative for greenbelt location

Lateral load resistance is enhanced in this range of products. The polymer concrete cover offers an increased coefficient of friction (over HDPE) for foot traffic.

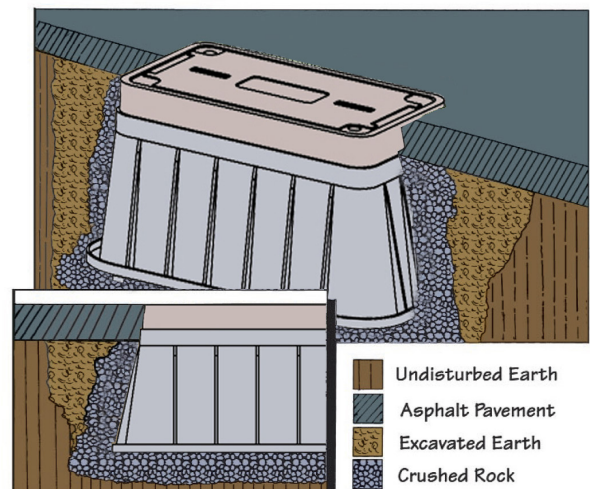
Note that backfill, although not crushed rock, is changed to specify compaction, thereby enhancing vault performance.



LIGHT DUTY HYBRID PRODUCT

Concrete or Asphalt Surround (shown)

Note compacted crushed rock surround. Dry mix could be added to crushed rock under "ring" to improve vertical load bearing.



CARSON® PLASTIC PRODUCTS ARE NOT INTENDED FOR INSTALLATION IN ANY DELIBERATE TRAFFIC AREA.

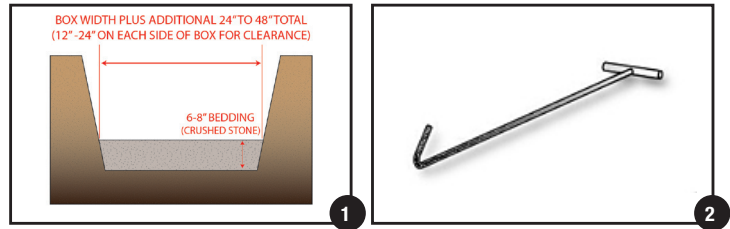
Oldcastle® underground enclosures are suitable for delivery to job sites on any construction vehicle. Enclosures can be safely handled by hand by the proper number of trained workers or proper lifting equipment for loading and unloading.

Site preparation

- Follow local guidelines and job requirements.

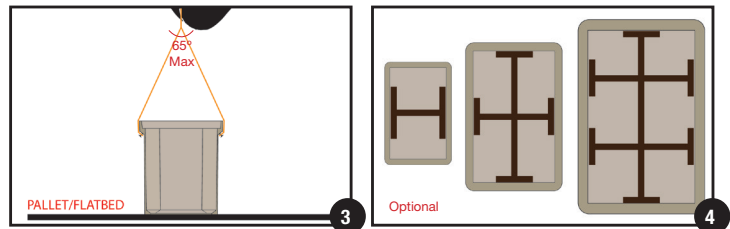
Excavation and preparation of enclosure hole (fig 1).

- Remove material to provide 1 – 2' of clearance all around the enclosure and 6" – 8" in additional depth allowing for bedding and rodent barrier.
- Place a suitable bedding material, such as crushed stone, at the base of the excavated hole.



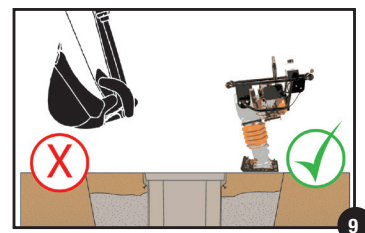
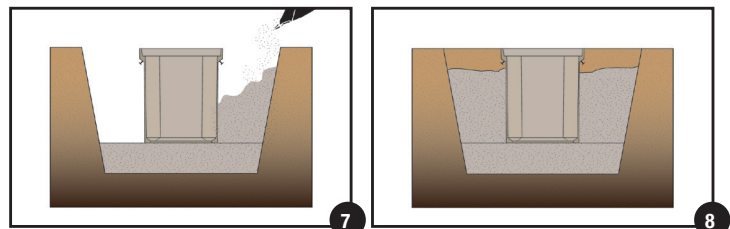
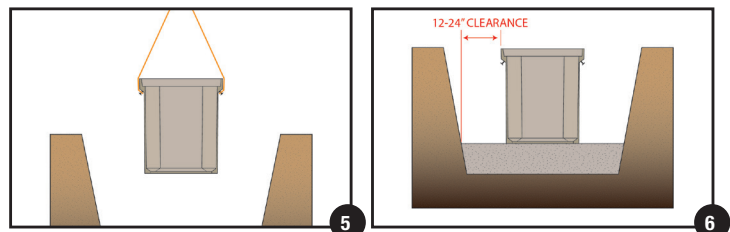
Removing enclosure from delivery vehicle and pallet.

- Remove shipping band from enclosure.
- Use proper hook to remove lid from the enclosure base (fig 2).
- Using proper lifting techniques, secure and remove box from truck. Lifting bolts are provided for boxes 2424 and larger (fig 3).
- The angle of the lifting lines should not exceed 65°.
- Optional : Install temporary brace supports in the interior of the enclosure to provide additional lateral rigidity and if 95% compaction is required (fig 4).



Enclosure placement into prepared hole.

- Reinstall the lid to the base of the enclosure prior to uniformly backfilling on all four sides. Nut, bolt threads, and cover seat should always be free of dirt and debris before tightening down the bolt.
- Bed the base of the hole with crushed stone. Then lift and place the enclosure into the bedded hole.
- Place crushed stone around the sides (fig 7 & 8).
- Position the enclosure to the proper grade level and check.
- Remove lid with proper lifting-eye tool.
- Make the necessary elevation adjustments and recheck the elevation.
- After the enclosure is set to the proper elevation, remove the temporary brace supports if used and reinstall the cover.
- Compact backfill per engineering specifications.
- Proper tamping tools such as a mechanical tamping device or hand operated device should be used. (fig 9)
- A hand shovel or backhoe should never be used for tamping as damage will occur.



Vibrator plate may also be used.

- 1** Synertech® underground enclosures can be delivered to the site on any construction maintenance vehicle and are easily handled by hand or boom truck for unloading.
-

- 2** Mark location and begin excavation, prepare excavation so there is room for at least 6" of bedding material. Depth of excavation = Box Height plus 6".
-

- 3** Place a suitable bedding material (compacted pea gravel or crushed rock) beneath the enclosure and level it to ensure that the enclosure is well supported beneath its walls. Install wire mesh on the level bedding material. Wire mesh is utilized to help prevent intrusion by pests and rodents after installation. On larger enclosures, utilize a boom to install enclosure into the excavated hole.
-

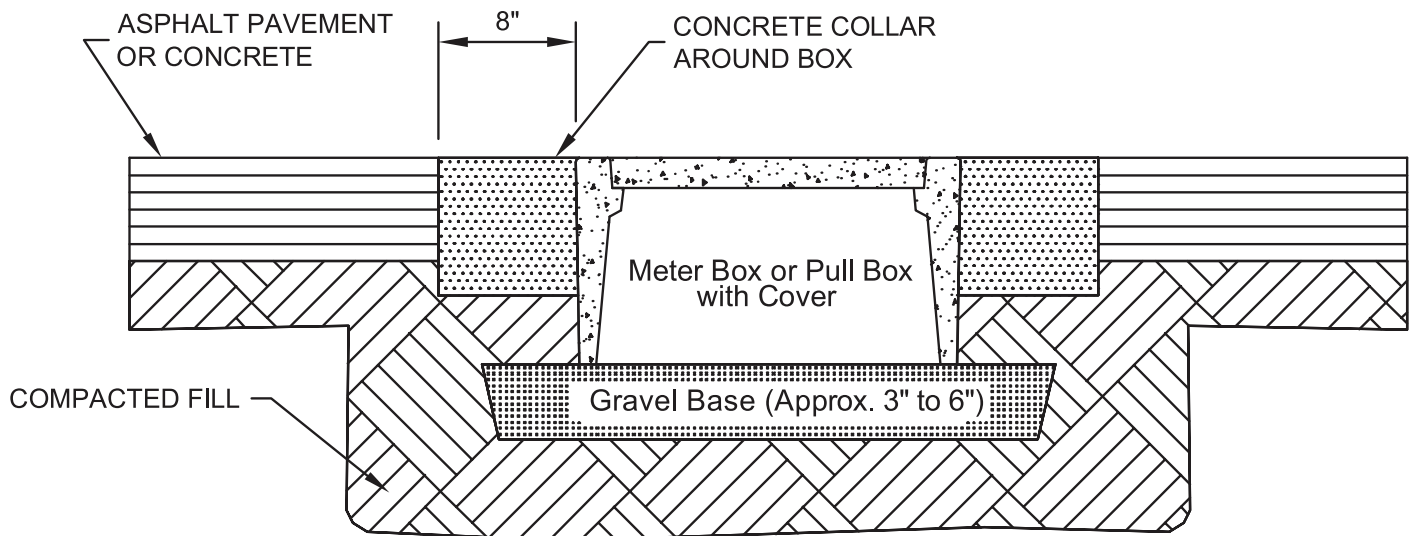
- 4** Install temporary supports in the interior of the underground enclosure to provide greater lateral rigidity. The number of supports varies depending on the size of Underground Enclosure.
-

- 5** Place a temporary cover or the actual cover on the enclosure before backfilling uniformly on all four sides. Backfill to grade level. Compact every 6 inches to ensure well compacted backfill. A mechanical tamping device or alternative hand operated mechanical devices should be used. Do not use a tire or the shovel of a backhoe as tamping tools!
-

- 6** Be sure that the soil or pavement is to grade level before allowing vehicles in the vicinity of the enclosure.

PEDESTRIAN RATED ENCLOSURES

Installation in concrete or pavement for driveways, parking lots, and off-roadway applications where subject to occasional non-deliberate light vehicles.



Field preparation

- Prepare the excavation approximately 6" deeper than the overall height of the enclosure.
- The length and width of the excavation should be determined by adding 4" to 6" to the overall length and width of the box.

Installation Recommendations

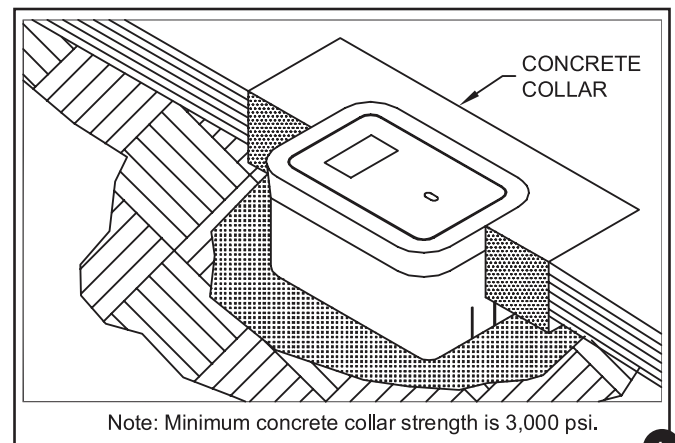
- Place 3" to 6" of compacted material such as sand or gravel because of its drainage characteristics.
- The compacted material should be leveled so the top of the box is flush to grade.

Backfilling

- Place select backfill into the excavation in 12" lifts and compact.
- The final 8" of the excavation should be finished with concrete
- This may be accomplished by providing a form around the enclosure that would produce an eight-inch wide collar (fig 1).

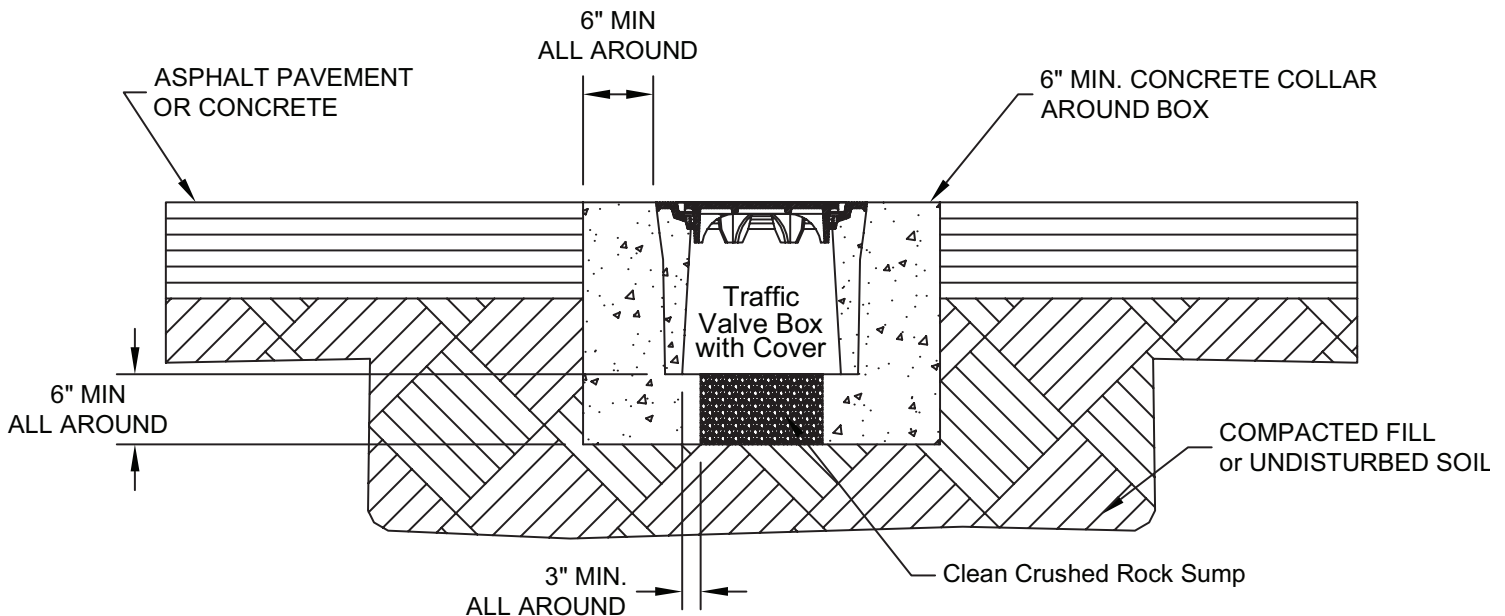
Quick Specification

Underground enclosures are manufactured by Oldcastle Enclosure Solutions. Boxes and covers shall be concrete and have a pedestrian rated minimum vertical test load of 350 pounds per square foot. The concrete shall test to a minimum of 4500 psi compressive strength.



TRAFFIC RATED VALVE BOXES

Installation in concrete or pavement for full traffic applications. This procedure is consistent with Caltrans Standard Plan ES-8B.



Field preparation

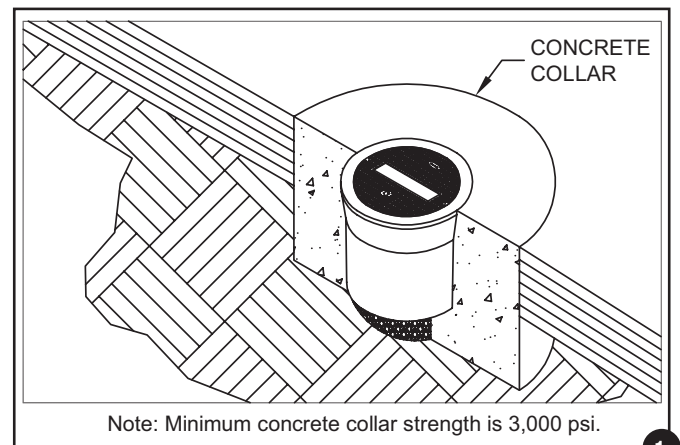
- Prepare the excavation approximately 6" deeper than the overall height of the enclosure.
- The diameter of the excavation should be determined by adding 12" to the overall diameter of the box.

Installation Recommendations

- Place at least 6" of compacted clean crushed rock, coarse gravel, or angular stone material because of its drainage characteristics.
- The compacted material should be leveled so the top of the box is flush to grade.

Backfilling

- Place select backfill into the excavation in 4" to 6" lifts and compact.
- The final 6" to 8" of the excavation should be finished with concrete collar. This may be accomplished by providing a form around the enclosure that would produce a six-inch minimum wide collar (fig 1).

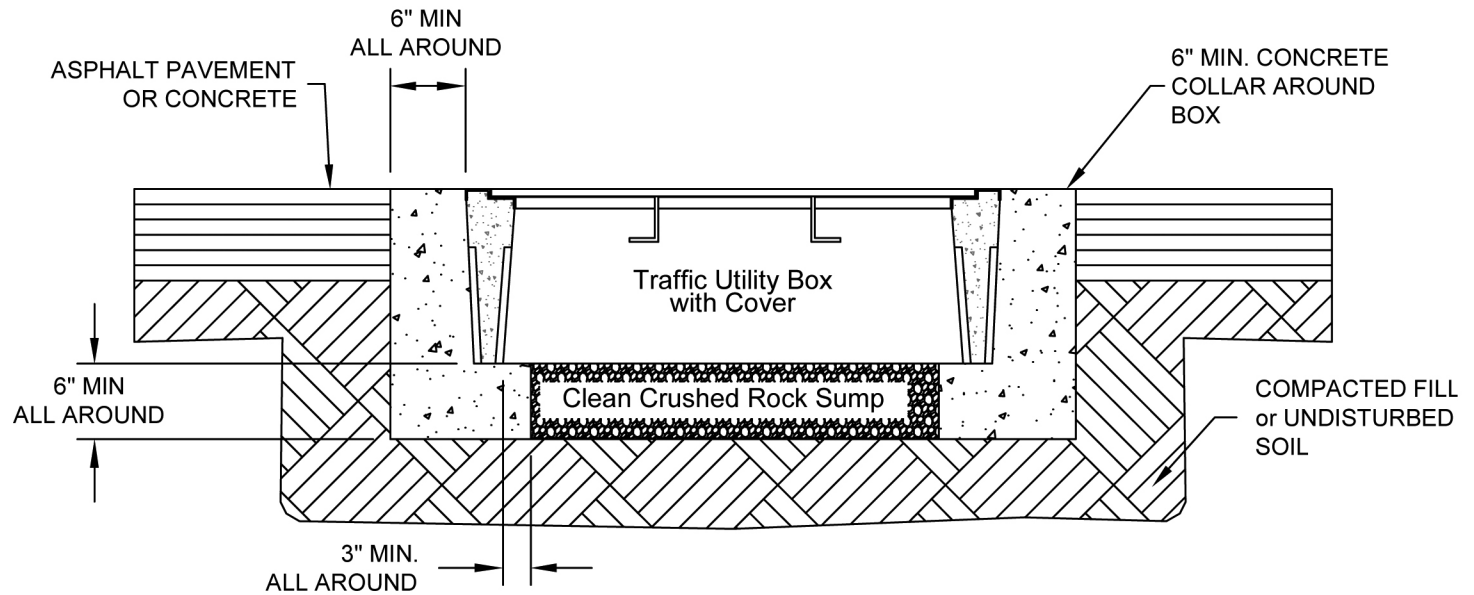


Quick Specification

Traffic-rated underground enclosures are manufactured by Oldcastle Enclosure Solutions. The box shall be precast concrete with a cast iron frame and cover with a 16,000 lbs design load. Traffic-rated enclosures shall be used where the box and cover may be exposed to vehicular traffic. The precast concrete mix shall exceed 4,500 PSI compressive strength. The concrete collar mix used in the installation shall exceed a minimum of 3,000 PSI compressive strength. Please contact Oldcastle Enclosure Solutions for a product cut sheet and possible applications.

TRAFFIC RATED ENCLOSURES

Traffic box installation procedure for installation in concrete or pavement for full traffic application. This procedure is consistent with Caltrans Standard Plan ES-8B.



Field preparation

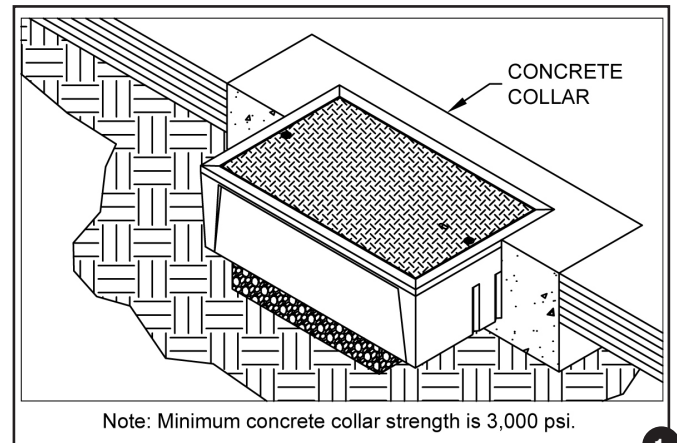
- Prepare the excavation approximately 6" deeper than the overall height of the enclosure.
- The length and width of the excavation should be determined by adding 12" to the overall length and width of the box.

Installation Recommendations

- Place at least 6" of compacted clean crushed rock, coarse gravel, or angular stone material because of drainage characteristics.
- The compacted material should be leveled so the top of the box is flush to grade.

Backfilling

- Place select backfill into the excavation in 4" to 6" lifts and compact.
- The final 6" to 8" of the excavation should be finished with concrete collar. This may be accomplished by providing a form around the enclosure that would produce a six-inch minimum wide collar (fig 1).

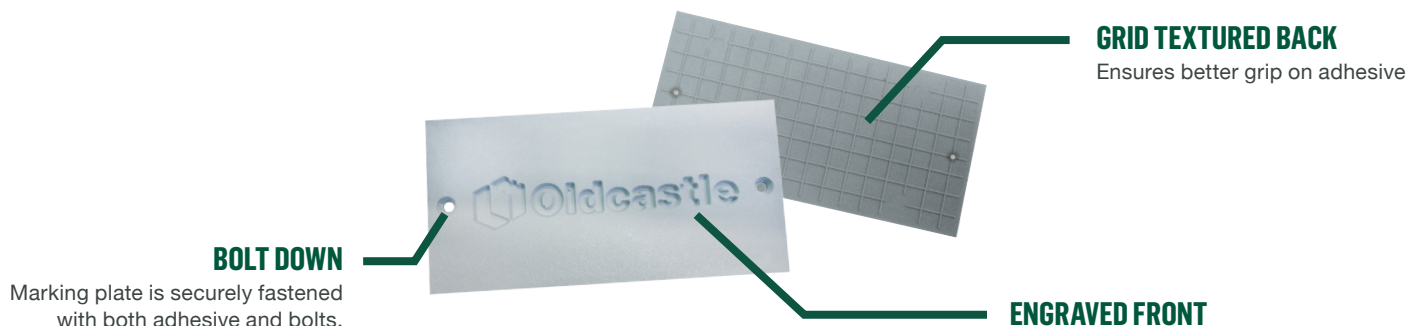


Quick Specification

Traffic-rated underground enclosures are manufactured by Oldcastle Enclosure Solutions. The box shall be precast concrete with a steel frame and cover with a 16,000 lbs design load. Traffic-rated enclosures shall be used where the box and cover may be exposed to vehicular traffic. The precast concrete mix shall exceed 4,500 PSI compressive strength. The concrete collar mix used in the installation shall exceed a minimum of 3,000 PSI compressive strength. Please contact Oldcastle Enclosure Solutions for a product cut sheet and possible applications.

BOLT DOWN MARKING PLATE SYSTEM

Simplify lid inventory and customize your enclosures at the time of installation. Our polymer concrete and composite lids available on the Duralite™ boxes feature a molded-in recess to allow marking plates to be installed at the factory, distribution center, or customer location. A wide variety of standard markings are available as listed in this document in addition to custom plate markings.



INSTALLATION GUIDELINES AND INSTRUCTIONS

For optimum results, the lid and marking plate should be clean and dry. The marking plate will have a grid pattern on the back side.

1

Apply a moderate amount of Surebond SB-12 adhesive (approximately 1/8" bead) in a wave-like pattern with a border (see figure 2) starting and ending approximately 3/8" from pocket sides. Using excessive adhesive will slow curing process.

2

Place marking plate in pocket (figure 3) and apply continual pressure to the top of the plate for 10 seconds.

3

Adjust marking plate to the center of the pocket and ensure it is below or flush with the lid surface before adhesive sets.

4

Tack-free time is 10-20 minutes and full cure is approximately 24 hour.

5

Using the spanner bit, screw the two spanner bolts hand-tight into the holes of the marking plate.

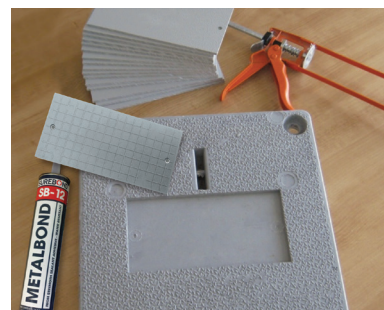


Figure 1

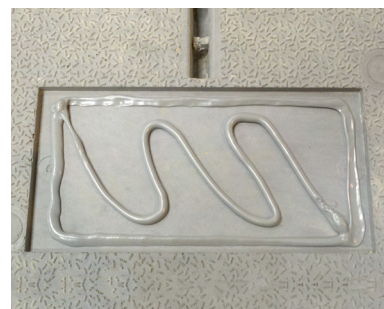


Figure 2



Figure 3

- Prices subject to change without notice.
- F.O.B. Oldcastle Facilities.
- Pre-Paid Freight minimums vary by product origin. Please contact your sales representative for assistance.
- Credit Terms: Net 30 days to approved customers.
- MINIMUM ORDER SIZE \$100.00 NET.
- Special requirements for color, materials, or hardware will be quoted upon request.
- Other sizes or type of bolt heads will be quoted upon request.
- Products being requested for return must have prior authorization and are subject to 25% restocking fee for standard products returned within 180 days of purchase. Products must be in saleable condition.
- Special order products cannot be returned.



Oldcastle®
Enclosure Solutions

Count on Oldcastle Enclosure Solutions to deliver reliable, high-performance products to allow for a safer and more successful project.



FOR MORE INFORMATION CALL

(800) 735-5566



VISIT OUR WEBSITE

OldcastleEnclosures.com

At Oldcastle Enclosure Solutions, we understand what makes your projects successful — the right enclosure, for the right location, for the right application. That's why we're dedicated to providing innovative, high-quality solutions to meet every application and the reliable service to back it up.

We leverage our footprint and manufacturing portfolio of the world's leading brands in grade-level utility boxes to create optimal solutions for Electrical, Communications, Water and Irrigation markets.

We believe our solutions do more than simply support infrastructure, that our solutions keep our communities running strong.

The information provided in this document is intended for informational purposes only and is subject to change without notice. Oldcastle may also make improvements and/or changes in the products, described in this information at any time without notice. Revision 10/2017