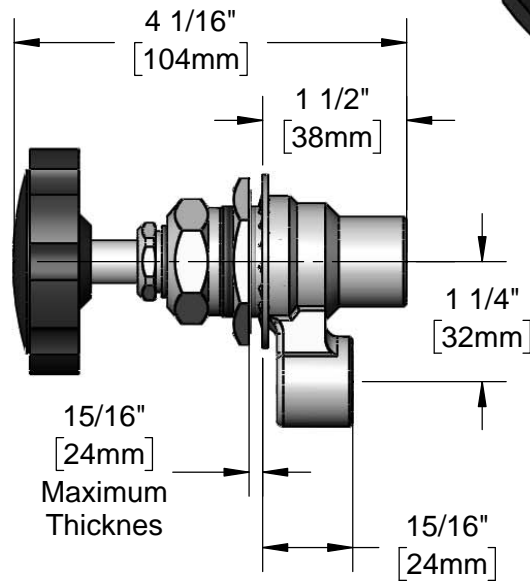
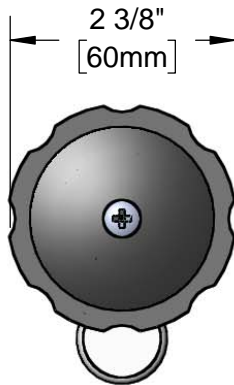
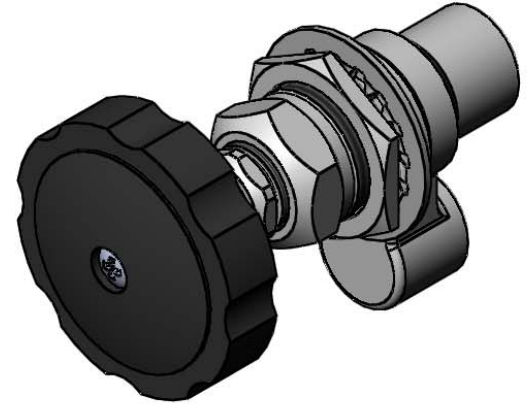




**Architect/Engineering Specifications:**

Fume hood steam valve with polished chrome plated brass body, internal stainless steel cone, removable seat, heat resistant handle and 3/8" NPT female inlet and outlet. Certified to ASME Z21.15a/CSA 9.1a.

Job Name \_\_\_\_\_  
Model Specified \_\_\_\_\_ Quantity \_\_\_\_\_  
Variations Specified \_\_\_\_\_  
Date \_\_\_\_\_



**Features & Benefits:**

- Fume hood steam valve w/ polished chrome plated brass body & handle
- Internal floating stainless steel cone regulates steam flow as handle is turned
- Heat resistant black handle
- 3/8" NPT female inlet and outlet
- Material: Polished chrome plated brass body

**Product Compliance:**

- ANSI Z21.15a / CSA 9.1a (Gas Valves)

**Warranty:** One Year (Limited)

**Performance Data:**

- Pressure: 125 psi max
- Temperature: 32°F - 125°F

