
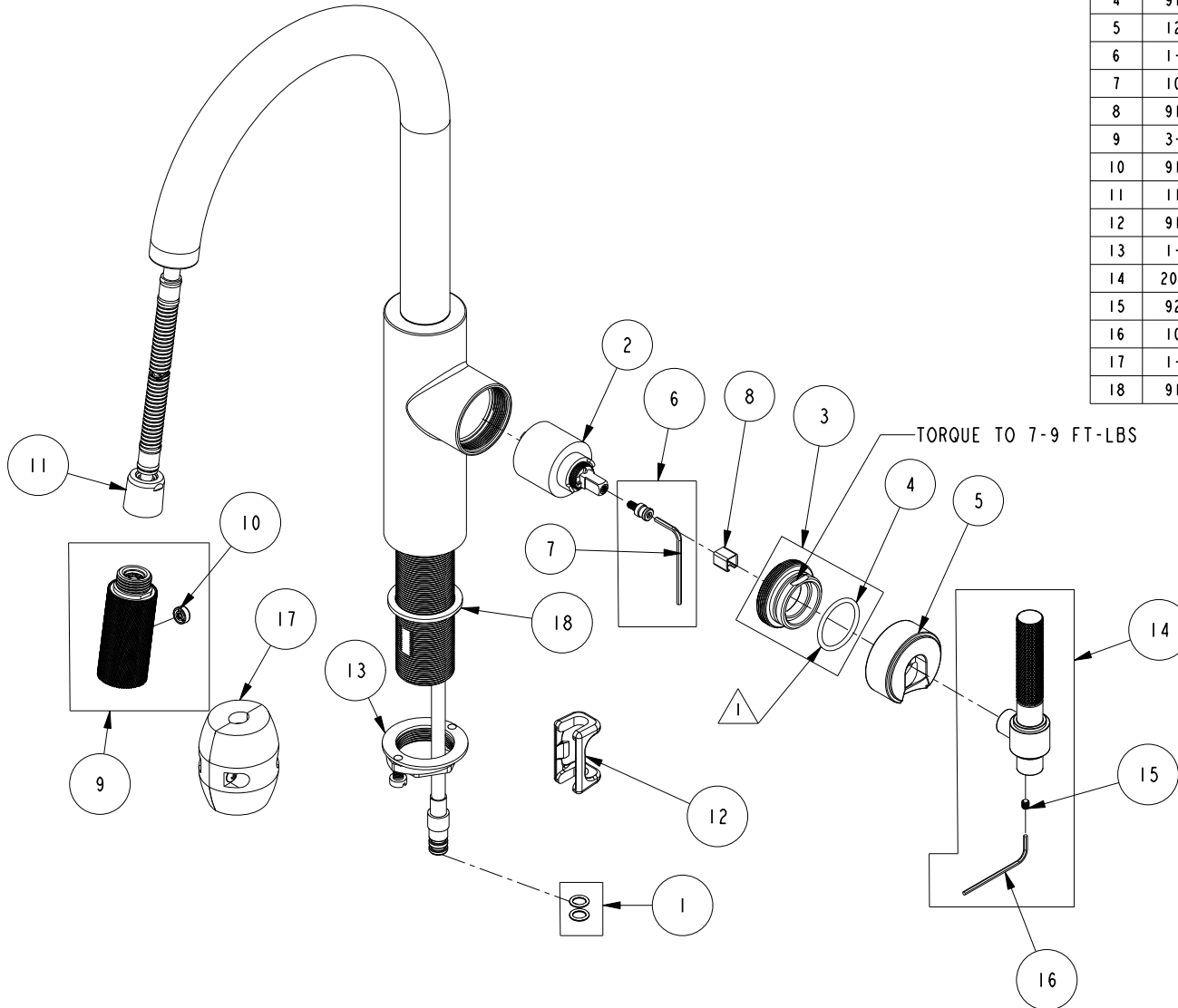


# REPLACEMENT PARTS

NOTE:

 USE SILICON GREASE (PART NUMBER 6727) TO LUBRICATE O-RINGS BEFORE INSTALL.

| ITEM | PT/ASSY | SPECIFY FINISH | DESCRIPTION                        |
|------|---------|----------------|------------------------------------|
| 1    | 1-399   |                | O-RING KIT FOR SPOUT PEX CONECTION |
| 2    | 1-064   |                | SINGLE LEVER CARTRIDGE             |
| 3    | 1-266   |                | CART. RETAINER ASM                 |
| 4    | 91608   |                | O-RING, #2-122, EPDM, 65-75 DURO   |
| 5    | 12843   | YES            | HANDLE HUB                         |
| 6    | 1-519   |                | HANDLE ADAPTER SCREW WITH HEX KEY  |
| 7    | 10159   |                | HEX KEY, 3/32 ALLOY STEEL          |
| 8    | 91534   |                | CARTRIDGE STEM INSERT              |
| 9    | 3-673   | YES            | SPRAY HEAD                         |
| 10   | 91667   |                | BUTTON                             |
| 11   | 11877   |                | HOSE, PULLDOWN SWIVEL              |
| 12   | 91568   |                | RETAINER CLIP                      |
| 13   | 1-256   |                | MOUNTING KIT                       |
| 14   | 20-532  | YES            | KNURLED HANDLE ASM                 |
| 15   | 92001   |                | SCRW, 8-32 X 3/16 SKT HD FLT PT SS |
| 16   | 10192   |                | HEX KEY TOOL, #8 5/64              |
| 17   | 1-286   |                | WEIGHT ASM                         |
| 18   | 91139   |                | WASHER RBR 1-3/8                   |



KITCHEN PULL DOWN  
3290-5113

REV J EN-4766 01/16/24 APPROVED RS

**NEWPORT BRASS.**

t: 949.417.5207 | www.newportbrass.com