
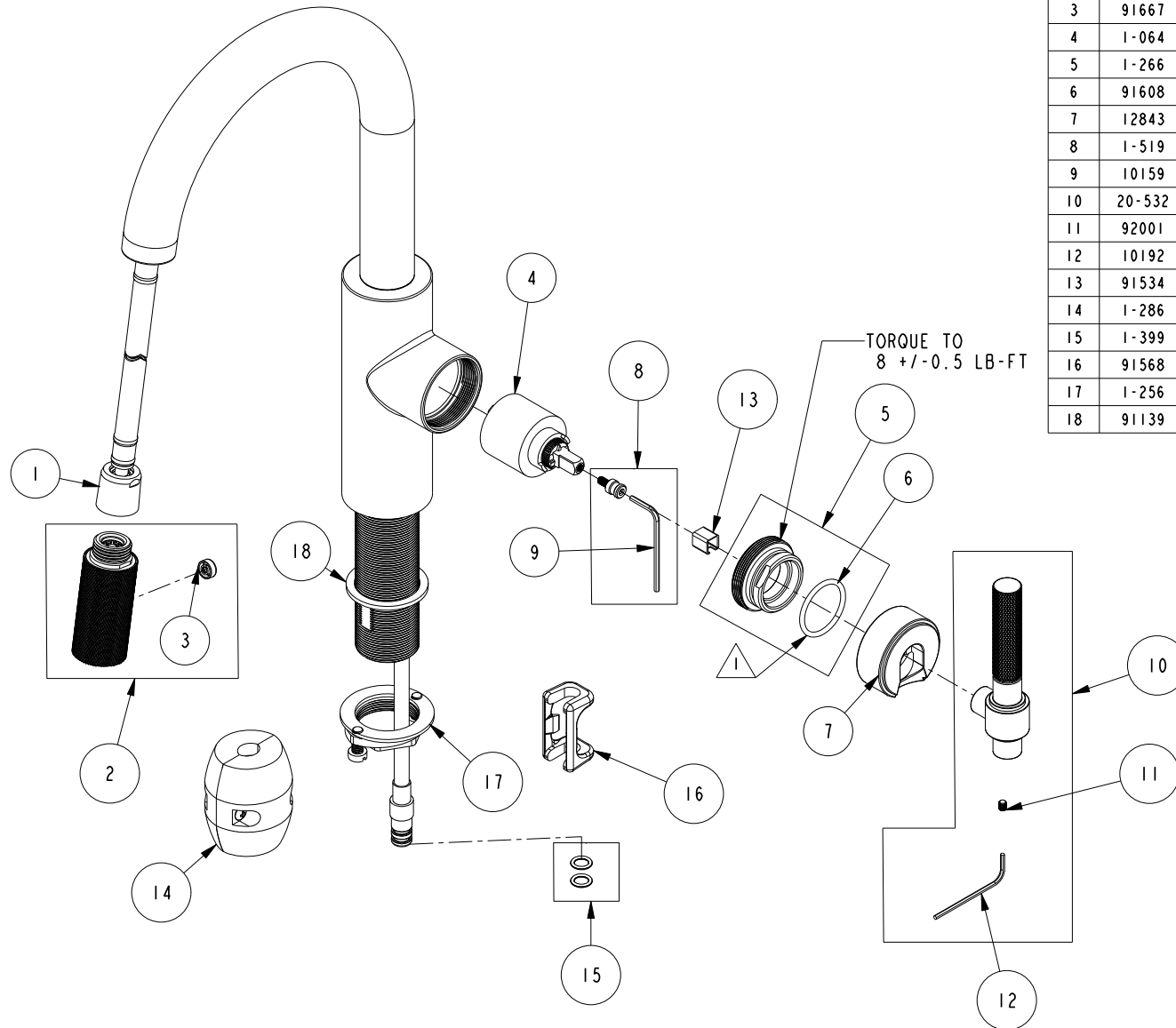


REPLACEMENT PARTS

NOTE:

 USE SILICON GREASE (PART NUMBER 6727) TO LUBRICATE O-RINGS BEFORE INSTALL.



ITEM	PT/ASSY	SPECIFY FINISH	DESCRIPTION
1	11877		HOSE, PULLDOWN SWIVEL
2	3-673	YES	SPRAY HEAD
3	91667		BUTTON
4	1-064		SINGLE LEVER CARTRIDGE
5	1-266		CART. RETAINER ASM
6	91608		O-RING, #2-122, EPDM, 65-75 DURO
7	12843	YES	HANDLE HUB
8	1-519		HANDLE ADAPTER SCREW WITH HEX KEY
9	10159		HEX KEY, 3/32 ALLOY STEEL
10	20-532	YES	KNURLED HANDLE ASM
11	92001		SCRW, 8-32 X 3/16 SKT HD FLT PT SS
12	10192		HEX KEY TOOL, #8 5/64
13	91534		CARTRIDGE STEM INSERT
14	1-286		WEIGHT ASM
15	1-399		O-RING KIT FOR SPOUT PEX CONECTION
16	91568		RETAINER CLIP
17	1-256		MOUNTING KIT
18	91139		WASHER RBR 1-3/8

PREP/BAR PULL DOWN
3290-5223

REV E EN-4646 05/09/23 APPROVED RS

NEWPORT BRASS.

t: 949.417.5207 | www.newportbrass.com