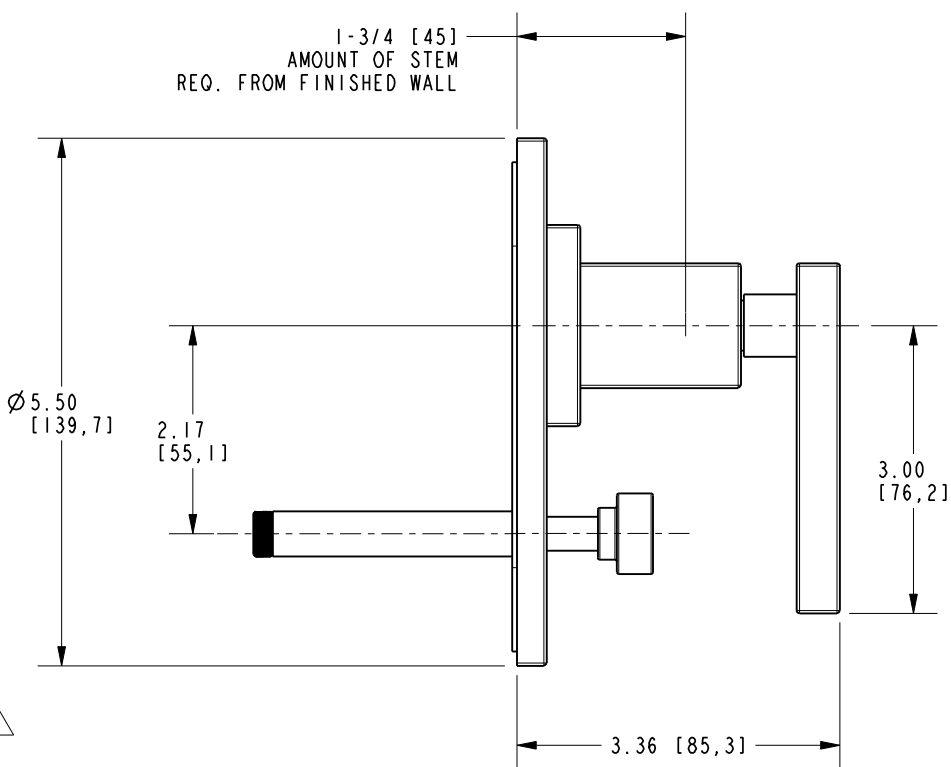
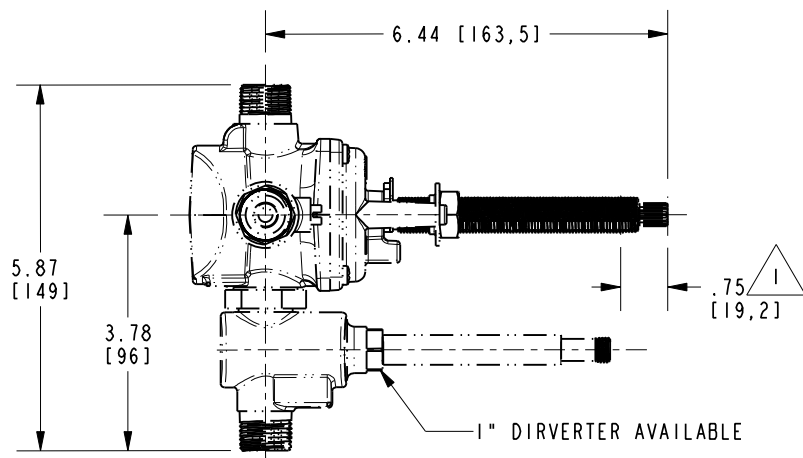
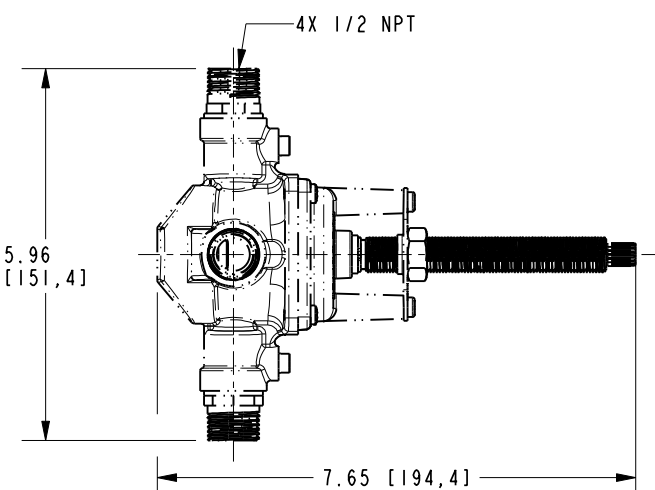
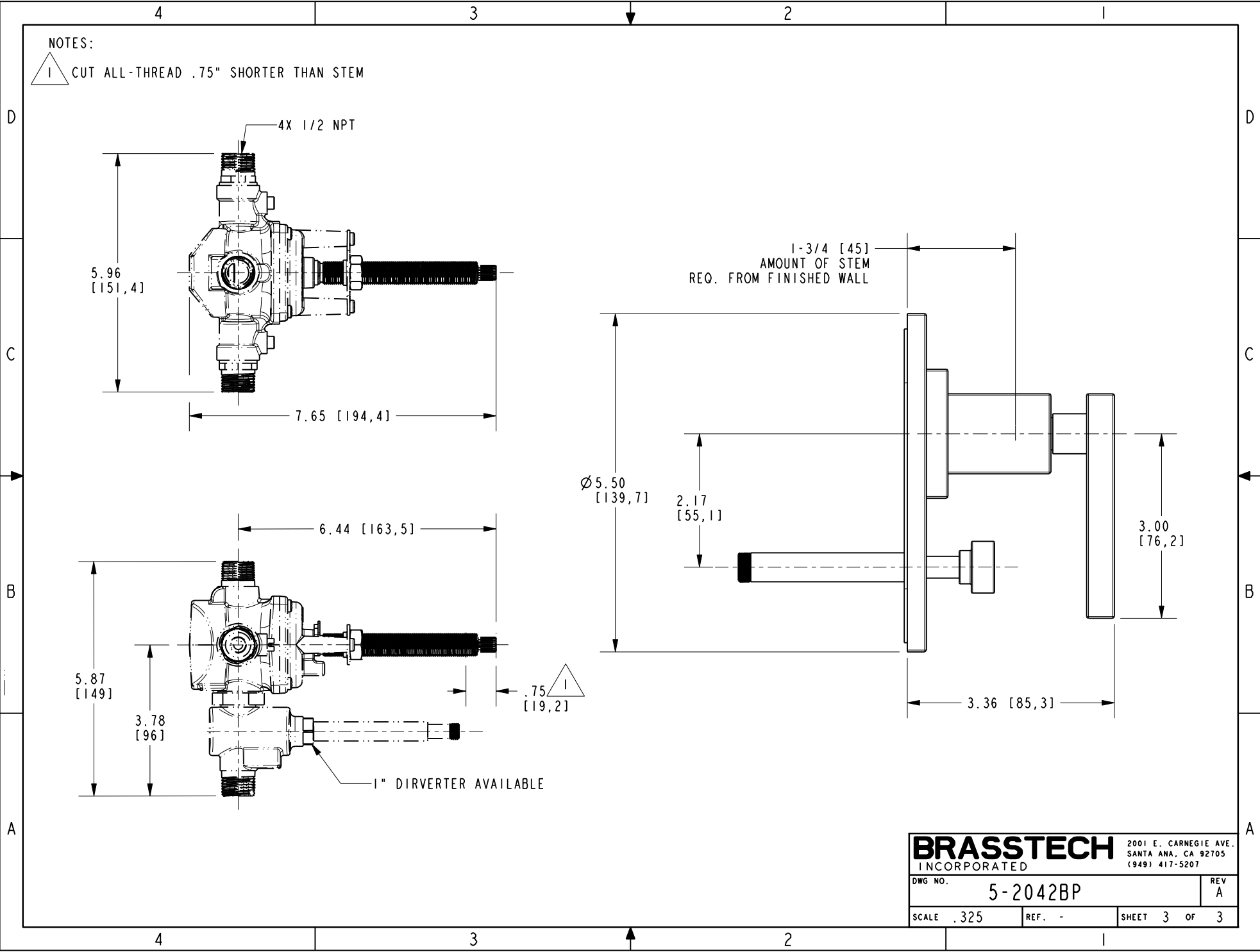


<b>BRASSTECH</b>		2001 E. CARNEGIE AVE.	
INCORPORATED		SANTA ANA, CA 92705	
DWG NO. 5-2042BP		REV A	
SCALE .375	REF. -	SHEET 2 OF 3	

NOTES:

1 CUT ALL-THREAD .75" SHORTER THAN STEM



<b>BRASSTECH</b> INCORPORATED		2001 E. CARNEGIE AVE. SANTA ANA, CA 92705 (949) 417-5207	
DWG. NO.	5-2042BP	REV	A
SCALE	.325	REF.	-
SHEET 3		OF 3	