

Job Name:

System Reference:

Date:

**UNIT OPTION**

Standard Model.....PUMY-P48NKMU3
Seacoast (BS) Model.....PUMY-P48NKMU3-BS

ACCESSORIES

Drain Socket.....PAC-SG61DS-E
Optional Defrost Heater.....PAC-SJ20BH-E
Drain Pan.....PAC-SH97DP-E
Front Wind Baffle (One Piece).....WB-PA3
Air Deflector Vertical.....ADV-1
Air Outlet Guide (One Piece).....PAC-SH96SG-E
Header Kit.....for details see Pipe Accessories Submittal
Joint Kit.....for details see Pipe Accessories Submittal

*PUMY requires two outlet guides and two wind baffles for installation

Specifications		System	
Unit Type		PUMY-P48NKMU3(-BS)	
Cooling Capacity (Nominal)		BTU/H	48,000
Heating Capacity (Nominal)		BTU/H	54,000
Guaranteed Operating Range	Cooling ^{1,2}	°F [°C]	5~115 [-15.0~46.0]
	Heating	°F [°C]	-13~59 [-25.0~15.0]
External Dimensions (H x W x D)		In. [mm]	52-11/16 x 41-11/32 x 13+1 [1,338 x 1050 x 330+25]
Net Weight		Lbs. [kg]	271 [123]
External Finish			Galvanized sheets (+power coating for -BS type)
Electrical Power Requirements	Voltage, Phase, Hertz, Power Tolerance		208/230V, 1-phase, 60 Hz,
Minimum Circuit Ampacity		A	29.0
Maximum Overcurrent Protection		A	44
Recommended Fuse Size		A	30
SCCR		kA	5
Refrigerant Piping Diameter	Liquid (High Pressure)	In. [mm]	3/8 [9.52] Flare
	Gas (Low Pressure)	In. [mm]	5/8 [15.88] Flare
Indoor Unit Connectable	Total Capacity		50.0~130.0% of outdoor unit capacity
	Model/Quantity		P04~P54/1.0~12.0
Sound Pressure Levels		dB(A)	51.0~54.0
FAN	Type x Quantity		Propeller fan x 2
	Fan Motor Output	kW	0.074 + 0.074 (two fan motors)
	Airflow Rate	CFM	3885
Compressor Operating Range		Cooling	28.0% to 100.0 %
		Heating	18.0% to 100.0%
Compressor	Type x Quantity		INVERTER-driven Scroll Hermetic x 1
Compressor Motor Output		kW	3.3
Refrigerant	Type x Original Charge		R410A x 10 lbs + 9.0 oz [4.8 kg]
Protection Devices	High Pressure Protection		High pressure sensor, High pressure switch 601 psi (4.15 MPa)
	Inverter Circuit (Comp./Fan)		Over-heat protection, Over-current protection
	Compressor		Discharge thermo protection, Over-current protection
Lubricant			FV50S (2.3 liters)
AHRI Ratings (Ducted/Non-ducted)	EER		11.3/13.1
	SEER		16.5/22.6
	COP		3.3/4.0
	HSPF		11.0/12.0
	ENERGY STAR® Certified		No/Yes

NOTES:

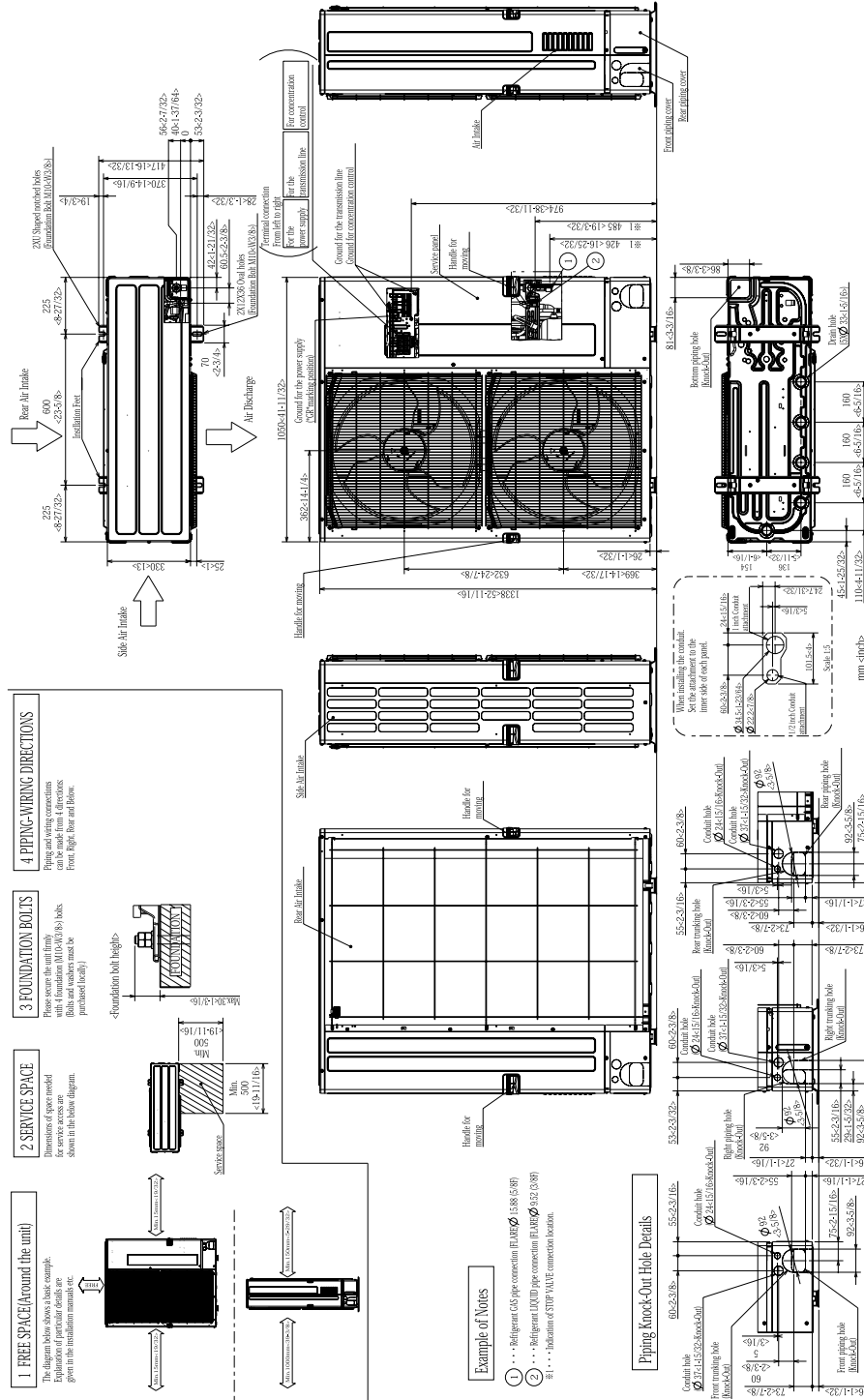
Cooling | Indoor: 81 ° F (27 ° C) DB / 66 ° F (19 ° C) WB; Outdoor: 95 ° F (35 ° C) DB

Heating | Indoor: 68° F (20° C) DB, Outdoor 45° F (7° C) DB / 43° F (6° C) WB

¹When using Wind Baffles [WB-PA3], the minimum operating range is 5° F. Without Wind Baffles, the minimum operating range is 23° F²When connecting PKFY-P06NBMU/P08NHMU, PFFY-P06/08/12NEMU or PFFY-P06/08/12NRMU indoor units, the minimum operating range is 50° F

DIMENSIONS: PUMY-P48NKMU3(-BS)

Unit: mm(in)



NOTES:
SEACOAST PROTECTION
 Anti-corrosion Protection: A coating treatment is applied to condenser coil for protection from air contaminants.
 Standard: Salt Spray Test Method - no unusual rust development to 480 hours.
 Sea Coast (BS): Salt Spray Test Method (JRA 9002) - no unusual rust development to 960 hours.

1340 Satellite Boulevard Suwanee, GA 30024
 Toll Free: 800-433-4822 www.mehvac.com

FORM# PUMY-P48NKMU3(-BS) - 202107

Specifications are subject to change without notice.

© 2021 Mitsubishi Electric Trane HVAC US LLC. All rights reserved.

