

SCHEDULE 40 PVC DWV FITTINGS



FEATURES & BENEFITS

Lower Installation Costs

PVC pipe and fittings are easily handled, stored, cut and joined, meaning significant reductions in labor and transportation costs on typical installations.

Superior Chemical Resistance

PVC DWV pipe and fittings handle exceptionally well against such chemicals as acids, alkalis and normally diluted hydrocarbons. Aggressive industrial effluents and acid rain are easily tolerated as well.

Corrosion Resistance

PVC DWV fittings are immune to damage from naturally corrosive, soil conditions as well as electrochemical and galvanic corrosion. Our fittings' non-corroding properties ensure improved flow, lower maintenance costs and longer performance life.

Lower Thermal Conductivity

With a dramatically lower thermal conductivity factor as compared to metal, plastic systems have less heat loss or gain and sustain the temperature of the service with less variation than metal piping. As a result, pipe insulation is often not required.

Multi Fittings offers a wide range of injection molded and fabricated Schedule 40 DWV fittings for the sewer market.

PVC DWV fittings are typically used for drainage and effluent piping and rainwater leaders for buildings such as parking garages or from roof tops in commercial and industrial applications.

For over 50 years, Multi Fittings has been an industry leader in offering the most comprehensively engineered and tested fittings for plastic pipe in North America.

Multi Fittings produces the widest range of injection molded fittings for pressurized water mains and sewer forcemains, gravity flow sewers and drain, waste and vent applications.

SIZES

Injection Molded
4" – 12"

Fabricated Molded
10" – 24"

MULTI FITTINGS

Telephone: 519 681-2140

Toll Free: 800 265-1815

Fax: 519 681-2156

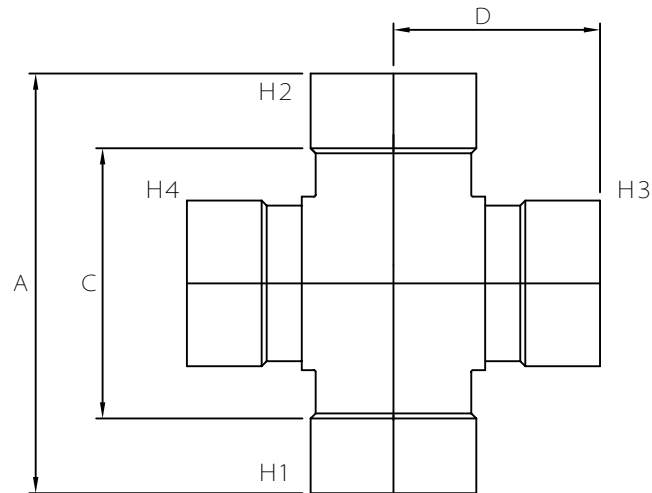


MULTI FITTINGS

LAYING LENGTH

ISSUE DATE: 2018 02 07
SUPERCEDES: 2005 06 30

CROSS TEE (HxHxHxH)



FABRICATED FITTING (F)

	SIZE H1xH2xH3xH4	PART NUMBER	A REF	C REF	D REF
P	4x4x4x4	026227	-	-	-
F	6x6x4x4	294377	16.00	10.00	6.75
F	6x6x6x6	294359	18.25	12.25	8.25
F	8x8x4x4	294379	18.50	10.50	7.75
F	8x8x6x6	294381	20.50	12.50	9.25
F	8x8x8x8	294361	22.50	14.50	10.25
F	10x10x4x4	294383	20.50	10.50	9.00
F	10x10x6x6	294385	22.75	12.75	10.25
F	10x10x8x8	294387	24.75	14.75	11.25
F	10x10x10x10	294363	26.75	16.75	13.00
F	12x12x4x4	294389	22.75	10.75	10.00
F	12x12x6x6	294391	25.00	13.00	11.25
F	12x12x8x8	294393	27.00	15.00	12.25
F	12x12x10x10	294395	29.00	17.00	14.00
F	12x12x12x12	294365	31.00	19.00	15.00

NOTE: Refer to Page LPD5 for Molded hub detail
Refer to Page LPD5 - 1 for Fabricated hub detail