

8. P-S REPLACEMENT PARTS LIST

Contact your dealer or the factory for questions concerning prices and policies on replacement parts. Normally all parts can be ordered through your Authorized dealer / distributor.

FOR WARRANTY REPLACEMENT PARTS, A PHOTOCOPY OF THE ORIGINAL INVOICE WILL BE REQUIRED TO HONOUR THE CLAIM.

When ordering replacement parts always give the following information:

- Model & Serial Number of appliance
- Installation date of appliance
- Part number
- Description of part
- Finish

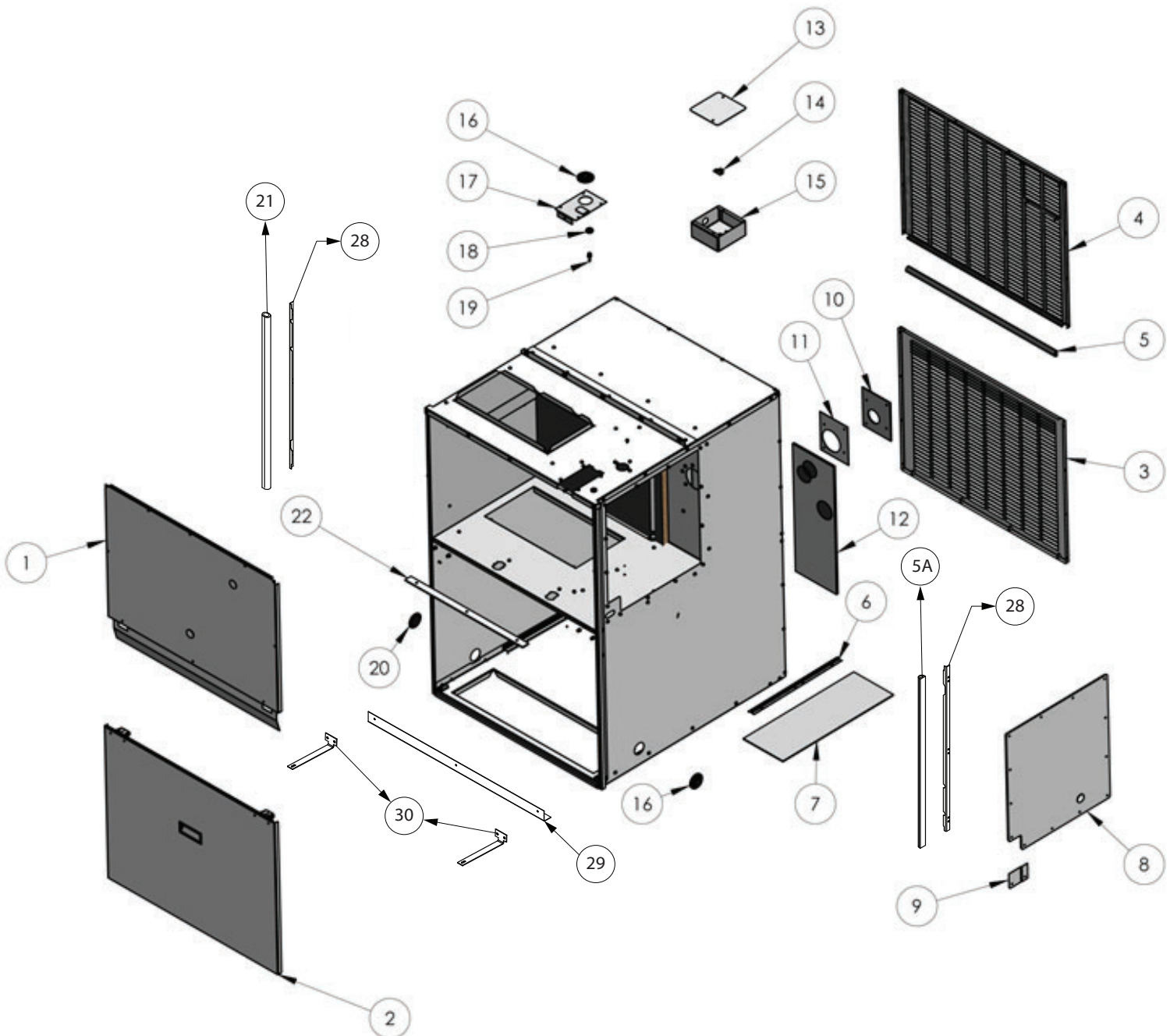
FOR FURTHER INFORMATION, CONTACT YOUR AUTHORIZED DEALER.

⚠ WARNING

FAILURE TO POSITION THE PARTS
IN ACCORDANCE WITH THIS
MANUAL OR FAILURE TO USE ONLY
PARTS SPECIFICALLY APPROVED
WITH THIS APPLIANCE MAY
RESULT IN PROPERTY DAMAGE OR
PERSONAL INJURY.

H41.1

8.1 P-S CONDO PACK CABINET



P-S CABINET PARTS LIST:

TABLE 10.

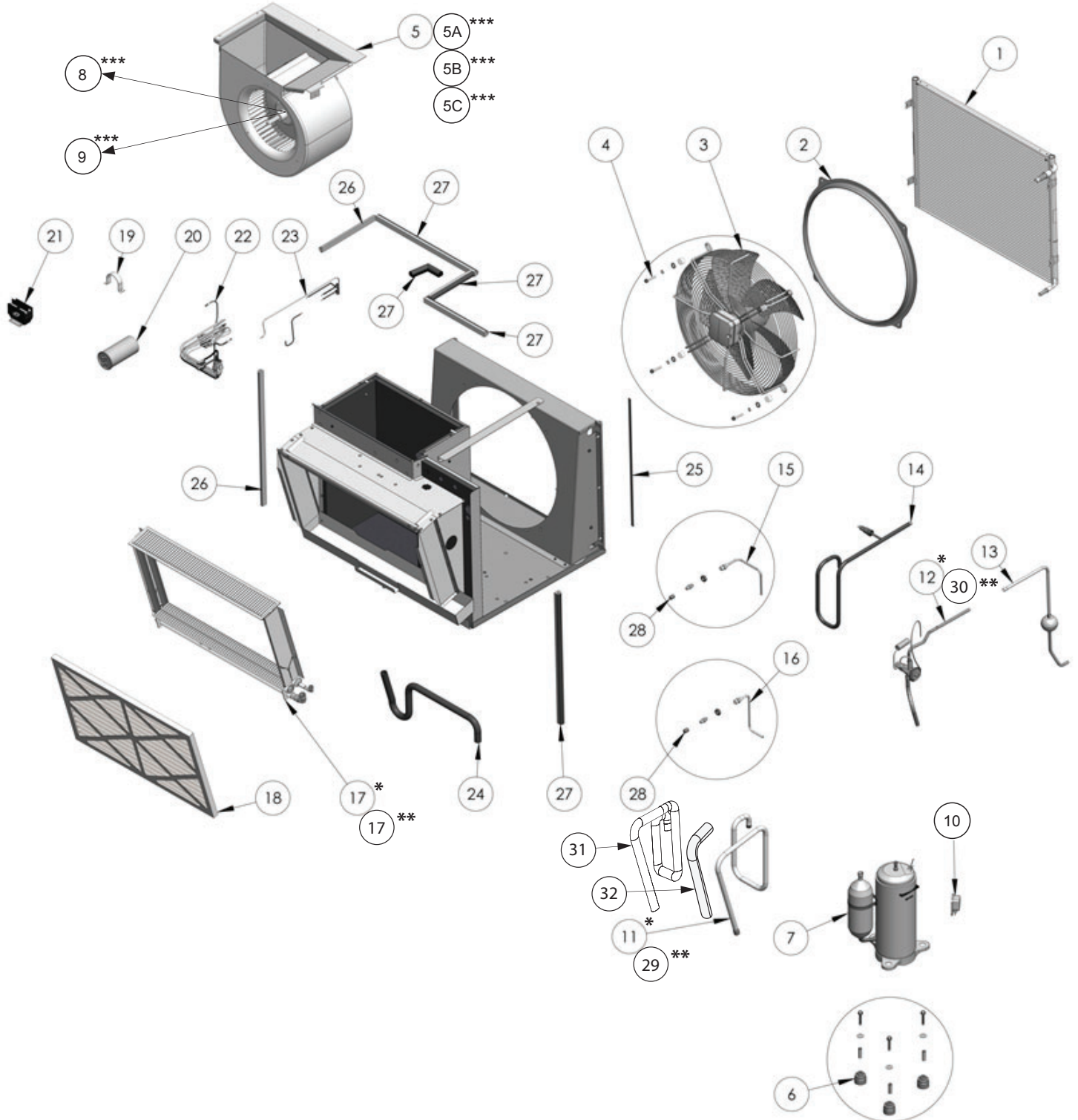
ITEM NO.	W010-4579	PART NUMBER	DESCRIPTION
	QTY		
1	1	W010-0001-SER**	TOP DOOR PARTS REPLACEMENT
2	1	W010-0002-SER**	BTM DOOR PARTS REPLACEMENT
3	1	W305-0010*	GRILLE, LOWER
4	1	W010-3784*	GRILLE, UPPER
5	1	W290-0256	GASKET, D-CHANNEL EPDM 3/4"X1/2" (ACHP) 25.25" LONG
5A	1	W290-0256	GASKET, D-CHANNEL EPDM 3/4"X1/2" (ACHP) 22" LONG
6	1	W525-0054	GUIDE, FURNACE LOWER
7	1	W290-0312	INSULATION, 1/4" THERMAL MANIGLASS
8	1	W475-0947-TP1SP-SER	PANEL, FURNACE SIDE ACCESS
9	1	W200-0537*	COVER, SIDE ACCESS
10	1	W290-0321	GASKET, INTAKE/EXHAUST
11	1	W263-0204	FLASHING, INTAKE/EXHAUST
12	1	W290-0313	GASKET, FOIL FACED EXT. WALL
13	1	W350-0738	ELECTRICAL BOX LID
14	1	W670-0525	GROUND LUG
15	1	W350-0732	ELECTRICAL BOX HOUSING
16	2	W315-0006	GROMMET, 0.775" I.D.
17	1	W080-1387*	BRACKET, GAS PIPE
18	1	W315-0018	GROMMET, 3/8" I.D.
19	1	W255-0045	FITTING, 3/16" HOSE BARB
20	1	W120-0067	CAP, 1-5/8" GAS INLET
21	1	W290-0276-SER	GASKET, D-CHANNEL 3/4"X3/4"X 2 FT
22	1	W290-0315	INSULATION, FRONT PANEL SEAL 1/8" FFM
23	3	W397-0002^	1" CLEAR WINDOW LENSE
24	1	N325-0080^	HANDLE, DRIP
25	2	W390-0025^	LATCH, PUSH/PULL SNAP
26	1	W290-0176-SER^	1/2" WIDE STRIP GASKET (10FT LG)
27	1	W573-0009-SER^	CAULKING ROLL 1/16 X 3/4 (6" LG)
28	2	W080-1941	BRACKET, D CHANNEL SUPPORT (CP) 22 3/8" LONG
29	1	W080-1928	BRACKET, SEAL FOR AC MODULE (CP)
30	2	W080-1940	BRACKET, STOP ANGLE (CP)

NOTE: * PART NO's MUST INCLUDE COLOR CODE TP1SP (EG.W475-0945-TP1SP)
TAUPE=TP1SP

NOTE: ** CONTACT HVAC ENG.

NOTE: ^ ITEM NOT SHOWN

8.2 AIR CONDITIONING MODULE



**** NOTE**

For field replacement of the COREMAX CORE (#28, W450-0236 - *not supplied with the unit*) the following tool (SCFT20A) from Fastest Inc. needs to be used which also reduces the refrigerant loss during the process. Please note that the COREMAX CORE valve is not a standard schrader valve.



AIR CONDITIONING MODULE PARTS LIST:

TABLE 11.

ITEM NO.	T24A	T18A	T12A	PART NUMBER	DESCRIPTION
	QTY	QTY	QTY		
1	1	1	1	W770-0006	CONDO PACK CONDENSOR COIL
2	1	1	1	W540-0020	RING, VENTURI 18.25" I.D. ABS UV
3	-	-	1	W435-0081	CONDENSER FAN ASSY 1100 RPM
3****	1	1	-	W435-0091****	CONDENSER FAN ECM MOTOR ASSY 1/3HP (A18A/A24A)
4	7	7	7	W570-0142	SCREW, 1/4-20 X 1-1/4" LG
4	4	4	4	W735-0050	WASHER, 5/16 X 3/4" O.D.
4	4	4	4	W735-0015	WASHER, LOCK 1/4" EXT TOOTH
5	1	1	1	W062-0041	BLOWER, 10-6T HOUSING (GF)
5A***	-	-	1	W010-3786***	T12A BLOWER HOUSING ASSY WITH 1/3HP X 13 MOTOR
5B***	-	1	-	W010-4627***	T18A BLOWER HOUSING ASSY WITH 1/3HP X 13 MOTOR
5C***	1	-	-	W010-4870***	T24A BLOWER HOUSING ASSY WITH 1/3HP X 13 MOTOR
6	3	3	-	W315-0021	GROMMET, COMPRESSOR MOUNT
6	-	-	3	W315-0026	GROMMET, 1.0 TON COMPRESSOR MOUNT (CP)
6	3	3	3	W315-0022	GROMMET SPACER
6	3	3	3	W735-0051	WASHER, 3/8" X 7/8" O.D.
6	3	3	3	W065-0046	BOLT, 5/16 X 1-3/4" LG
7^	1	-	-	W172-0026^	COMPRESSOR, 2.0 TON
7^	-	1	-	W172-0023^	COMPRESSOR, 1.5 TON
7A	1	1	-	W200-0678	COVER, COMPRESSOR WIRE TERM
7A	1	1	-	W450-0248	NUT, COMPRESSOR WIRE TERM
7A	1	1	-	W290-0365	GASKET, COMPRESSOR WIRE TERM
7^^	-	-	1	W172-0022^^	COMPRESSOR, 1.0 TON
7B	-	-	1	W200-0649	COVER, COMPRESSOR WIRE TERM
7B	-	-	1	W450-0247	NUT, COMPRESSOR WIRE TERM
7B	-	-	1	W290-0350	GASKET, COMPRESSOR WIRE TERM
8***	-	-	1	W010-3817***	PROGRAMMED INDOOR BLOWER MOTOR FOR A12A
9***	-	1	-	W010-4501***	PROGRAMMED INDOOR BLOWER MOTOR FOR A18A
9***	1	-	-	W010-4537***	PROGRAMMED INDOOR BLOWER MOTOR FOR A24A / T24A
10	1	1	1	W750-0328	WIRE, HARNESS, LG COMPRESSOR

NOTE : ^ MUST ORDER WITH 7A ACCESSORIES (NOT SHOWN)

NOTE : ^^ MUST ORDER WITH 7B ACCESSORIES (NOT SHOWN)

NOTE : *** IF 5A, 5B OR 5C IS ORDERED, CORRESPONDING PROGRAMED MOTOR 8 OR 9 WILL BE INCLUDED IN THE KIT. IF JUST PROGRAMED MOTORS ARE DESIRED, ORDER ITEM 8 OR 9 ONLY.

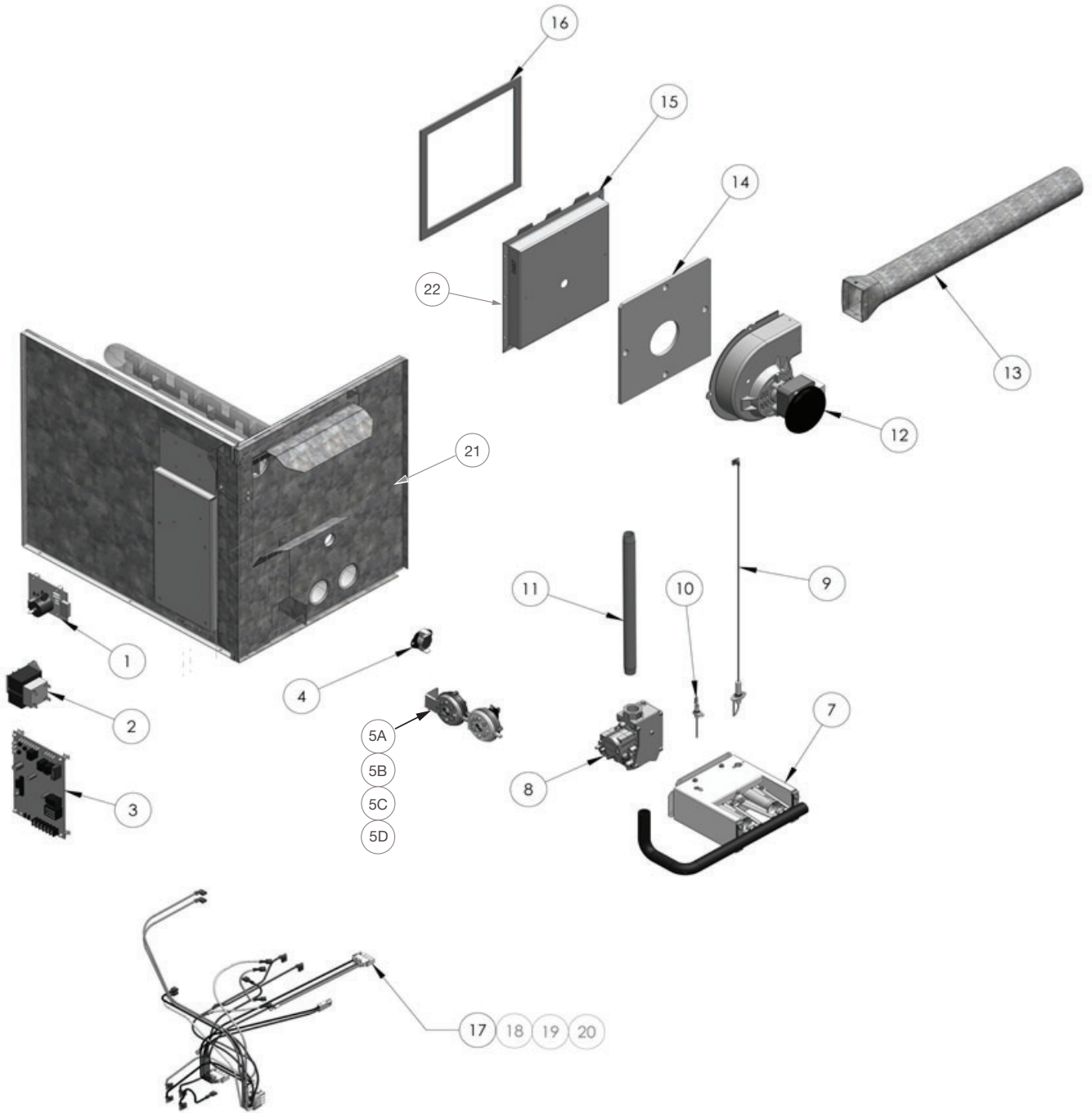
NOTE : **** FOR T18A CONNECT SPEED 1 AND FOR T24A CONNECT SPEED 2 ON CONDENSER FAN MOTOR W435-0091.

AIR CONDITIONING MODULE PARTS LIST:

TABLE 11. CONT.

ITEM NO.	T24A	T18A	T12A	PART NUMBER	DESCRIPTION
	QTY	QTY	QTY		
13	-	1	1	W010-4023	LIQUID LINE FILTER ASSY
13	1	-	-	W010-4142	LIQUID LINE FILTER ASSY
14	-	-	1	W010-4028	DISCHARGE LINE PRESS. SWITCH ASSY
14	-	1	-	W010-4029	DISCHARGE LINE PRESS. SWITCH ASSY
14	1	-	-	W010-4863	DISCHARGE LINE PRESS. SWITCH ASSY
15	1	1	1	W010-3336	SUCTION LINE PORT SERVICE
16	-	-	1	W010-4038	LIQUID LINE PORT SERVICE
16	1	1	-	W010-3337	LIQUID LINE PORT SERVICE
17	1	1	1	W770-0014	CONDO PACK EVAPORATOR COIL
18	1	1	1	W250-0012	FILTER, FURNACE 16" x 25" X 1"
19	1	1	1	W640-0014	CAPACITOR STRAP
20	-	-	1	W435-0085	CAPACITOR, 40+5MFD 440V 50/60Hz
20	-	1	-	W435-0086	CAPACITOR, 45+5MFD 440V 50/60Hz
20	1	-	-	W435-0083	CAPACITOR, 50+5MFD 440V 50/60Hz
21	1	1	1	W670-0531	TERMINAL, A/C CONTACTOR 2 POLE
22	1	1	1	W750-0326	HARNESS - CONDO PACK X13 LOWER
23	1	1	1	W750-0348	HARNESS - CONDO PACK A/C AND POWER LOWER
24	1	1	1	W345-0018	HOSE, 5/8" ID AC CONDENSATE TRAP
25	1	1	1	W290-0170	GASKET, STRIP 3/8"X (4 FT)
26	1	1	1	W290-0256	GASKET, D-CHANNEL EPDM 3/4"X1/2" (ACHP) 25.25" LONG
27	1	1	1	W290-0256	GASKET, D-CHANNEL EPDM 3/4"X1/2" (ACHP) 22" LONG
28	2	2	2	W450-0236	NUT, COREMAX CORE (1/2-20 X 7/16-20)
28	2	2	2	W450-0237	NUT, 1/2-20 HEX S.STEEL
28	2	2	2	W120-0090	CAP, BRASS 1/4 WITH O-RING
29	1	-	-	W490-0888	PIPE 5/8" O.D. SUCTION
29	-	1	-	W490-0868	PIPE 1/2" O.D. SUCTION
29	-	-	1	W490-0864	PIPE 1/2" O.D. SUCTION
30	1	-	-	W010-4649	ASSY, LIQUID/EVAP BLEED TXV 2T (CACM)
30	-	1	-	W010-4502	LIQUID / EVAP TO TXV PIPE ASSY
30	-	-	1	W010-4497	LIQUID / EVAP PIPE ASSY #44 ORIFICE
31	1	1	1	W290-0271	GASKET,THERMAL INSUL, 1/2" SUCTION LINE, 60" LONG
32	1	1	1	W290-0271	GASKET,THERMAL INSUL, 1/2 " LIQUID LINE, 18" LONG

8.3 P-S GAS HEATING MODULE



P-S GAS HEATING MODULE PARTS LIST:

TABLE 12.

ITEM NO.	\$64A	\$51A	\$38A	\$26A	PART NUMBER	DESCRIPTION
	QTY	QTY	QTY	QTY		
1	1	1	1	1	W190-0071	CONTROL, DIRECT SPARK PONY BOARD
2	1	1	1	1	W707-0018	TRANSFORMER, 240/24V 40VA
3	1	1	1	1	W190-0042	X13 SS CONTROLLER BOARD
4	1	1	1	1	W660-0138	HEAT LIMIT 170 DEG.
5A	-	-	-	1	W010-4566	*ASSY, PSS/P-S PRS SWTC 0.06+0.75 WC(CP)
5B	-	-	1	-	W010-4567	*ASSY, PSS/P-S PRS SWTC 0.10+0.55 WC(CP)
5C	-	1	-	-	W010-4568	*ASSY, MID EFF SWITCH 0.10+0.75" WC (CP)
5D	1	-	-	-	W010-4801	ASSY, PSS/P-S PRS SWTC 0.25+0.55 WC (CP)
6	1	1	1	1	W345-0011-SER	HOSE, PSI SQUARE TUBE 0.36"X0.36" X 2FT LG (NOT SHOWN)
7^	1	-	-	-	W100-0201^	ASSY, BURNER TRAY 64K (MID EFF.)
7^	-	1	-	-	W100-0200^	ASSY, BURNER TRAY 51K (MID EFF.)
7^	-	-	1	-	W100-0199^	ASSY, BURNER TRAY 38K (MID EFF.)
7^	-	-	-	1	W100-0198^	ASSY, BURNER TRAY 26K (MID EFF.)
8^	1	1	1	1	W010-2614^	GAS VALVE
9^	1	1	1	1	W357-0013-SER^	SPARK IGNITOR
10^	1	1	1	1	W010-2562^	FLAME SENSOR
11	1	1	1	1	W490-0792	PIPE, BLACK 1/2" X 12"LG
12	1	1	1	1	W062-0071	EXHAUSTER, MID EFFICIENCY
13	1	1	1	1	W720-0178	EXHAUST TUBE
14	1	1	1	1	W290-0308	GASKET, MANIGLASS EXHAUSTER
15	1	-	-	-	W200-0637	COVER,MID FORMED 1.75" (CSGM)
15	-	-	1	-	W200-0636	COVER,MID FORMED 1.03" (CSGM)
15	-	1	-	-	W200-0750	COVER, 1.100" FRONT MANIFOLD (CP)
15	-	-	-	1	W200-0635	ASSY, COVER MID MID MANIFOLD 26K 0.68"
16	1	1	1	1	W290-0326	GASKET, MANIFOLD
17	1	1	1	1	W750-0323	WIRE, HARNESS CONDO PACK GAS FURN
18	1	1	1	1	W750-0325	WIRE, HARNESS CONDO PACK X13 UPPER
19	1	1	1	1	W750-0364	WIRE, HARNESS AC/GAS/ELECTRIC
20	1	1	1	1	W750-0333	WIRE, HARNESS 9200/C92 PSC HEAT/COOL
21	-	-	1	1	W361-0353	INSULATION, INNER FRONT S26A/S38A (CP)
21	1	1	-	-	W361-0354	INSULATION, INNER FRONT S51A/S64A (CP)
22	1	1	1	1	W361-0355	INSULATION, MID EFFICIENCY COVER (CP)

^ ITEM#7 INCLUDES ITEMS 8,9,10