



BELLEVUE BRIDGE KITCHEN FAUCET INSTALLATION

BEFORE YOU BEGIN

We recommend consulting a professional if you are unfamiliar with installing plumbing fixtures. Signature Hardware accepts no liability for any damage to the faucet, plumbing, sink, counter top, or for personal injury during installation.

Observe all local plumbing and building codes.

Unpack and inspect the faucet for shipping damage. If any damage is found, contact our Customer Relations team at 1-866-855-2284.

GETTING STARTED

- Ensure that you have gathered all the required materials that are needed for the installation.
- For these instructions, it is assumed that the old faucet has been completely removed and any necessary repairs or modifications to the water supply have been completed.

TOOLS AND MATERIALS:



Plumbers
Tape



Thread
Sealant



Adjustable
Wrench



Basin
Wrench



Small
Bucket



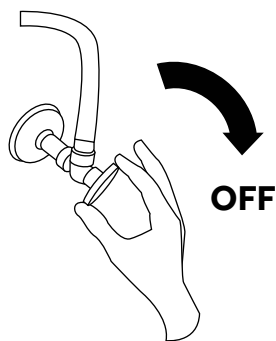


BELLEVUE BRIDGE KITCHEN FAUCET INSTALLATION

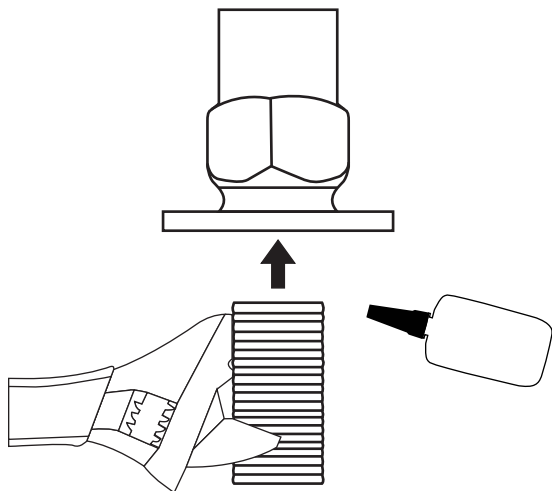
Installation

1. Ensure that the water supply below your sink is completely shut off by turning the shutoff valves all the way to the right.

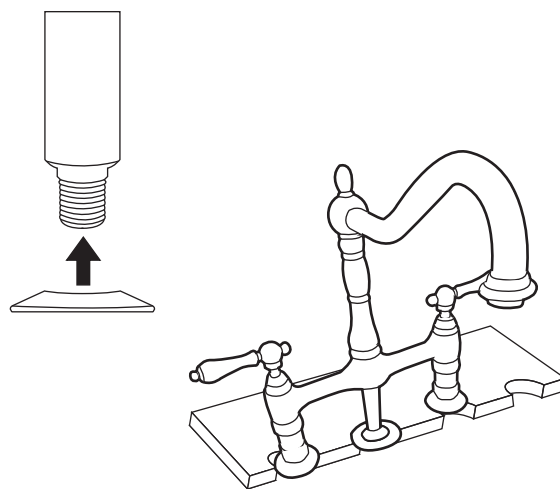
Tip: Place a small bucket below your workspace to catch any water that may drip during the installation process.



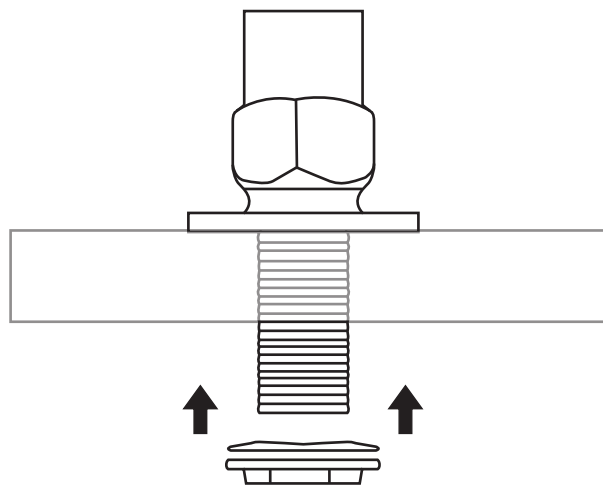
2. Attach the provided threaded shanks into each handle base, with the tapered side of the threads facing up. Apply thread sealant or plumber's tape to the threads before attaching. Tighten firmly using an adjustable wrench.



3. Slide the decorative escutcheon onto the center post, as shown. Insert the faucet into its designated mounting holes on the mounting surface.



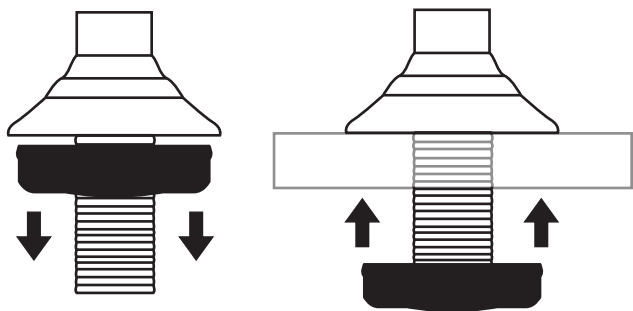
4. From beneath the counter, slide the provided metal washers onto each of the threaded shanks. The beveled side of the washer should face up, as shown. Secure the faucet to the counter by threading the provided lock nuts onto each threaded shank. Hand tighten, then finish tightening using a basin wrench.



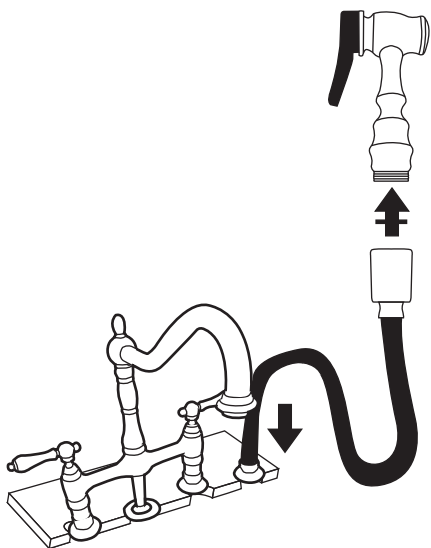


BELLEVUE BRIDGE KITCHEN FAUCET INSTALLATION

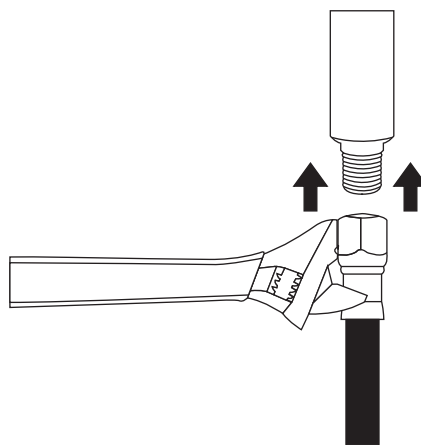
5. Remove the plastic lock nut from the hand sprayer cradle. Insert the cradle into its designating mounting hole, and tighten the lock nut from underneath to secure.



6. Insert the provided rubber O-ring into the end of the hand sprayer hose, and attach it to the hand sprayer assembly. Hand tighten firmly. Insert the hose and hand sprayer into its cradle from above the counter.

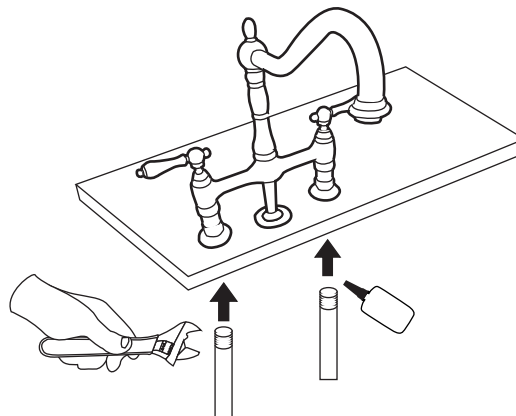


7. From beneath the counter, attach the hand sprayer hose by threading it onto the center post. Apply a bit of thread sealant or plumber's tape to the threads before tightening. Use an adjustable wrench to tighten firmly.



8. Attach the main water lines to the threaded shanks on the faucet. Ensure that the hot and cold lines are being connected appropriately. Apply plumber's tape or thread sealant to the threads before tightening. Hand tighten the connections, then finish tightening with a ¼ turn using an adjustable wrench.

Tip: If needed, use the provided lock nuts and rubber cone washers to make the connections.





BELLEVUE BRIDGE KITCHEN FAUCET INSTALLATION

9. Once installation is complete, turn the main water supply back on from underneath your sink. Check for any leaks underneath.



10. Remove the aerator from the spout and turn the faucet on. Ensure that both hot and cold water are running properly, and check for any leaks. Allow the water to flow for approximately 60 seconds to remove any dust or sediment within the water lines. Reattach the aerator and turn on the sprayer. Allow the sprayer to run for another 60 seconds, and check for any leaks.

