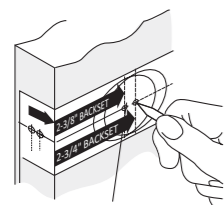


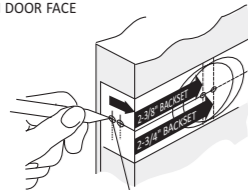
Door Lock Instructions New Door Preparation

JSC-FGS-5762

Step 1 : Mark Door



MARK FOR 2-1/8" (54mm) HOLE IN DOOR FACE



MARK FOR 1" (25mm) HOLE IN DOOR EDGE

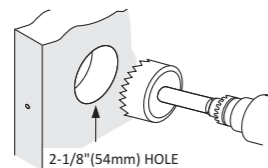
Fold Template below on Fold Line and Mark Door for Lock Bore Hole at 2-3/4" or 2-3/8" Backset and lock Edge Hole Centered on the door edge.

Note: Most exterior doors 2-3/4" Backset is used

Common Standard for Lock Height off Floor is 36" above the floor. Deadbolt should be 5.5" above the entrance Knob or lever

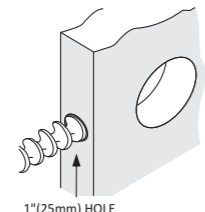
Step 2 : Drill Holes

A) Drill through Door Face with 2-1/8" hole saw. Drill one side until Guide Bit punches through then Drill from through with the Hole saw from the other side to Complete the Lock Bore Hole



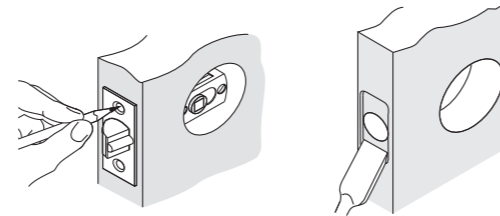
2-1/8" (54mm) HOLE

B) Drill the 1" Latch Hole from the door edge fully into the Lock Bore hole



1" (25mm) HOLE

Step 3 : Mortise Door for Latch

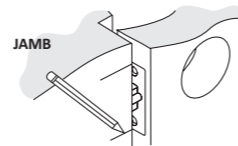


A) Insert Latch into Hole and keeping it parallel to the door Edge mark the Outline

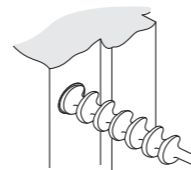
B) Mortise the Door edge with a Chisel or Router 1/8" deep or until the latch Face plate is flush with the door when installed

Step 4 : Prepare Jamb for Strike

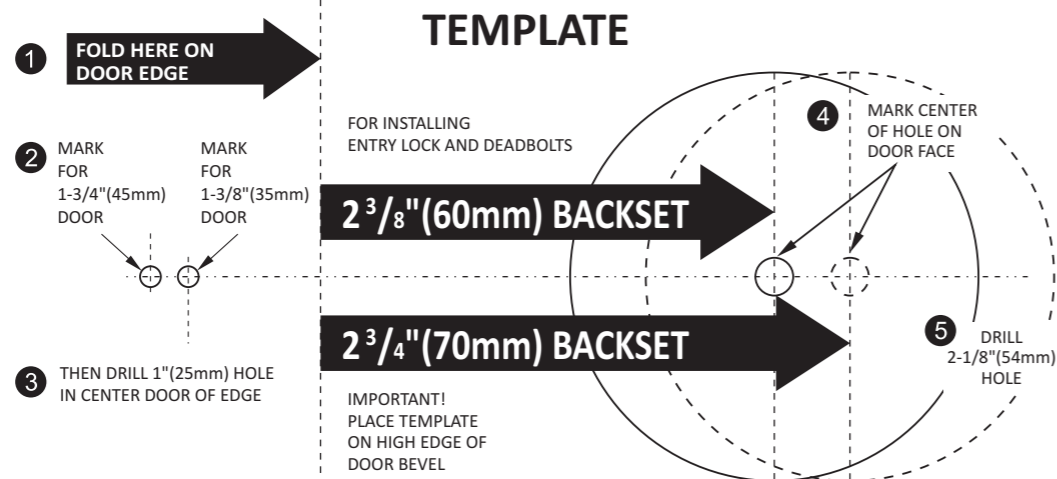
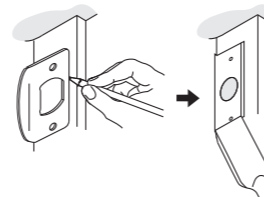
A) Insert Latch into hole in door and Mark where it will hit the door Jamb when properly closed.



B) Drill a 1" hole a Minimum of 1" deep into the door Jamb at the position Marked.



C) If the Door is a tight fit to the Jamb you may need to mark the strike and mortise the Jamb so the strike sits flush to the door.



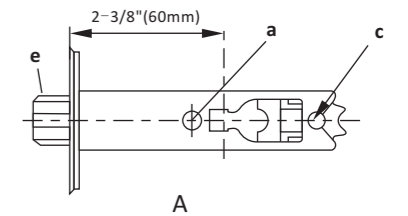
Door Lock Installation

JSC-FGS-5762

Step 1 : Adjust Latch Backset

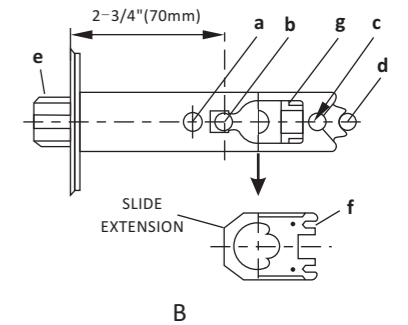
A) FOR 2-3/8" (60mm) BACKSET INSTALLATION

- The latch is factory preset at 2-3/8" (60mm) backset, which is standard for most doors.
- To use the 2-3/8" (60mm) backset, no adjustment is required, simply insert the screw stems on the outside knobs thru holes (a) & (c) of the latch, proceed to step 4 of the instructions for installing lockset.



B) FOR 2-3/4" (70mm) BACKSET INSTALLATION

- Push in front of latch (e) and hold it.
- Use a screwdriver to push the black insert slide extension up or down and remove the slide extension from inside the latch. For best results, while keeping the latch depressed, push down on the top front (closest to e) of the extension slide, while at the same time releasing the latch.
- Latch is ready for installation.
- When using the 2-3/4" (70mm) backset, lockset screw stems are inserted through hole (b) of the latch and against the outside of location (d) on the latch. proceed to step 4 of the instructions for installing lockset.

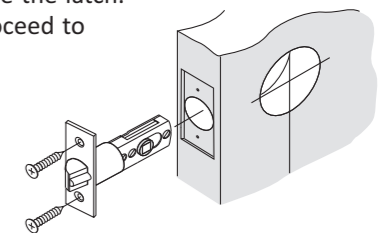


Note: To reverse the adjustment from 2-3/4" (70mm) to 2-3/8" (60mm):

- Depress latch (e)
- Catch the open slot on the rear of the extension piece (f) on the notch (g) inside the latch.
- Lower extension piece into latch while at the same time releasing the latch. Proceed to step 4 of the instructions for installing lockset.

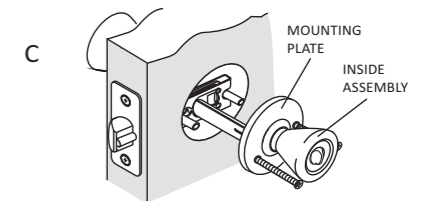
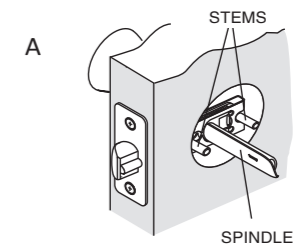
Step 2 : Install Latch into the door

Install Latch into door positioned so that wedged shaped side of Bolt engages the strike first when closing the door



Step 3 : Install Lock body

- Install exterior of lock by Inserting Lock Spindle Through Half Moon Opening and Studs through round holes until lock is Flush with the door. (Press in and Hold Latch to make inserting spindle easy)
- For Knobs with vertical key slots the knob should be installed with the Key Slot positioned so that the Key will be teeth up when used.
- Install the interior of the lock by inserting it over the spindle and pressing Flush to the door. Insert screws through holes and tighten down with a hand-held screwdriver.

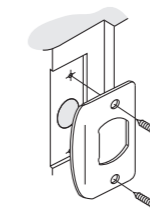


Note: It may be necessary to twist lock knob on interior assembly of lock to align with connector bar.

Note: Check alignment of the lock as you tighten the screws to keep lock centered over the bore Hole

Step 4 : Install Strike

Install Strike and test from inside. Adjust Strike position if necessary, for firm Closure.



Entry Lock only – Ensure Security Pin Seats Properly

