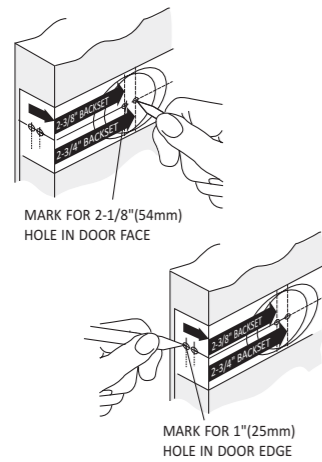


Door Lock Instructions New Door Preparation

JSC-FGS-D101S-M

Step 1 : Mark Door

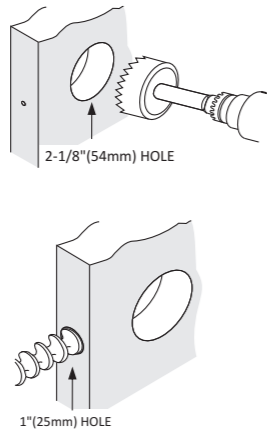


Fold Template below on Fold Line and Mark Door for Lock Bore Hole at 2-3/4" or 2-3/8" Backset and lock Edge Hole Centered on the door edge.
 Note: Most exterior doors 2-3/4" Backset is used

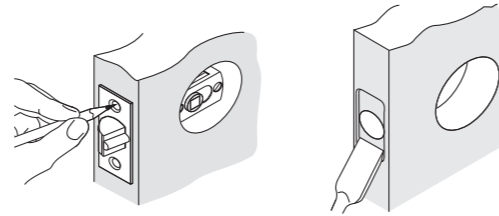
Common Standard for Lock Height off Floor is 36" above the floor. Deadbolt should be 5.5" above the entrance Knob or lever

Step 2 : Drill Holes

- A) Drill through Door Face with 2-1/8" hole saw. Drill one side until Guide Bit punches through then Drill from through with the Hole saw from the other side to Complete the Lock Bore Hole
- B) Drill the 1" Latch Hole from the door edge fully into the Lock Bore hole



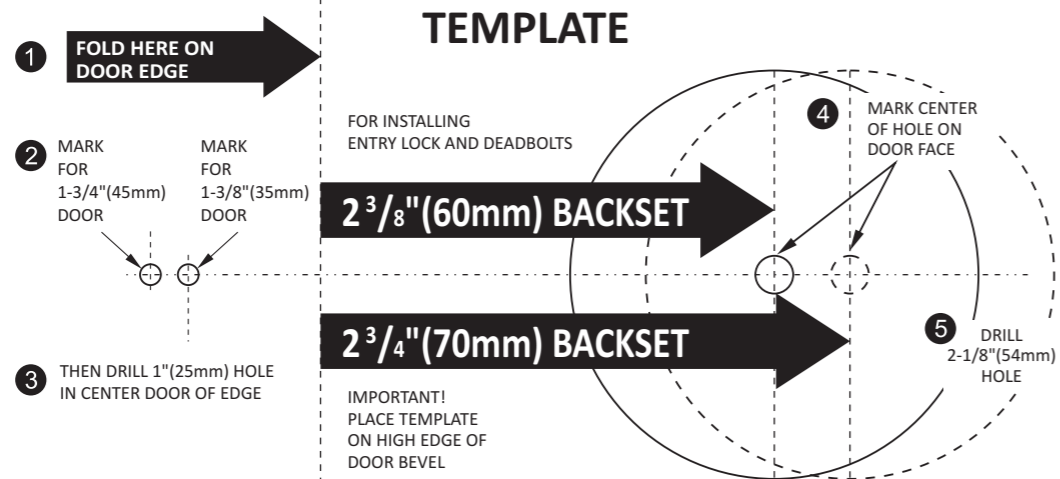
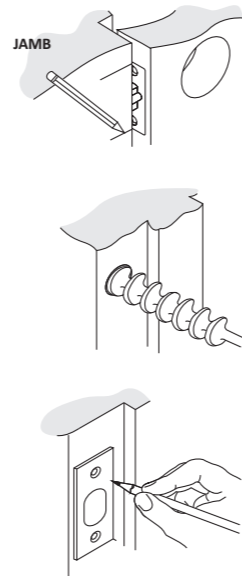
Step 3 : Mortise Door for Latch



- A) Insert Latch into Hole and keeping it parallel to the door Edge mark the Outline
- B) Mortise the Door edge with a Chisel or Router 1/8" deep or until the latch Face plate is flush with the door when installed

Step 4 : Prepare Jamb for Strike

- A) Insert Latch into hole in door and Mark where it will hit the door Jamb when properly closed.
- B) Drill a 1" hole a Minimum of 1" deep into the door Jamb at the position Marked
- C) If the Door is a tight fit to the Jamb you may need to mark the strike and mortise the Jamb so the strike sits flush to the door

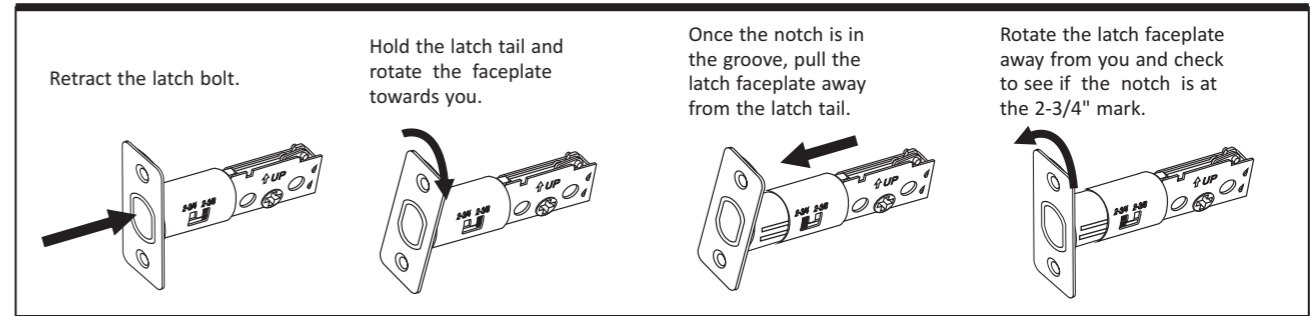


Full Bore One-Sided Deadbolt Lock Installation

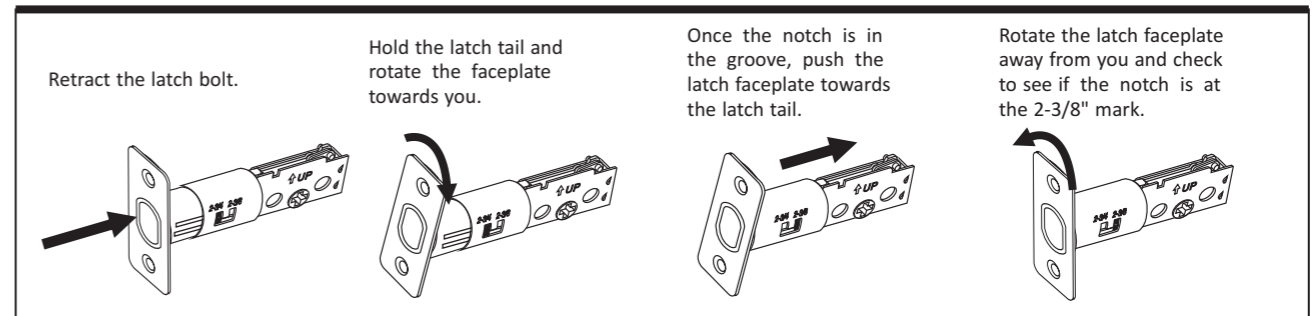
JSC-FGS-D101S-M

Step 1 : Adjust Latch Backset to match your door

To adjust the backset from 2-3/8" to 2-3/4" follow these steps.

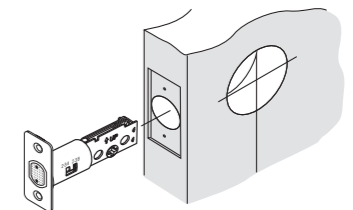


To adjust the backset from 2-3/4" to 2-3/8" follow these steps.



Step 2 : Install Latch into the door

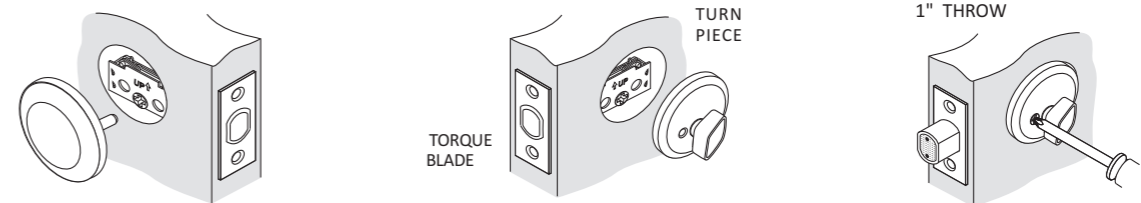
Install Latch into door and Screw into door with wood screws provided with lock.



Step 3 : Install Lock body

- A) Install exterior of lock by Inserting Studs through round holes until plate is Flush with the door.
- B) Install the interior of the lock by inserting the spindle into cross cam of latch and pressing Flush to the door. Insert screws through holes and tighten down with a hand-held screwdriver.

Note: Check alignment of the lock as you tighten the screws to keep lock centered over the bore Hole



Step 4 : Install Strike

Install Strike and test lock
 Adjust Strike position if necessary, for firm Closure.

