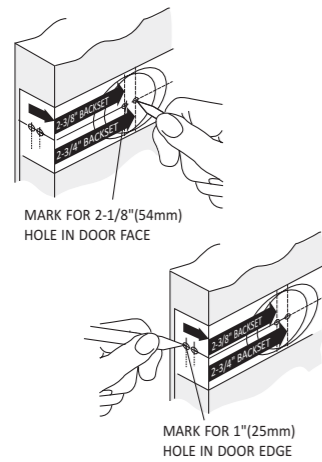


# Door Lock Instructions New Door Preparation

JSC-FGS-808

## Step 1 : Mark Door

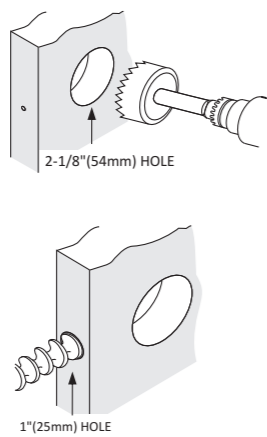


Fold Template below on Fold Line and Mark Door for Lock Bore Hole at 2-3/4" or 2-3/8" Backset and lock Edge Hole Centered on the door edge.  
 Note: Most exterior doors 2-3/4" Backset is used

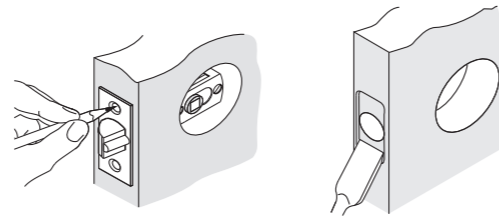
Common Standard for Lock Height off Floor is 36" above the floor. Deadbolt should be 5.5" above the entrance Knob or lever

## Step 2 : Drill Holes

- A) Drill through Door Face with 2-1/8" hole saw. Drill one side until Guide Bit punches through then Drill from through with the Hole saw from the other side to Complete the Lock Bore Hole
- B) Drill the 1" Latch Hole from the door edge fully into the Lock Bore hole



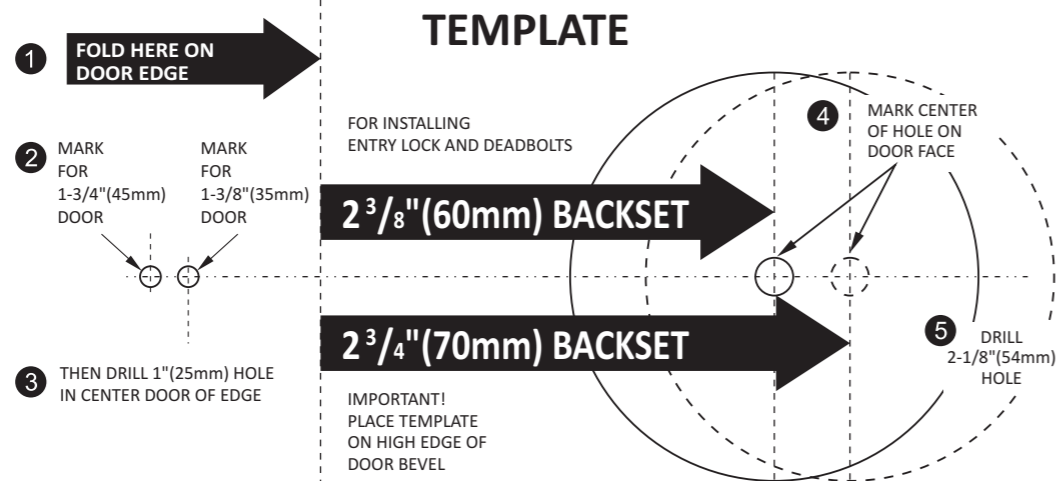
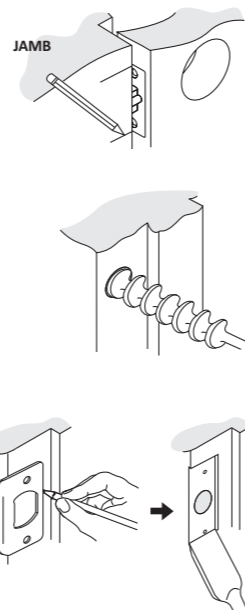
## Step 3 : Mortise Door for Latch



- A) Insert Latch into Hole and keeping it parallel to the door Edge mark the Outline
- B) Mortise the Door edge with a Chisel or Router 1/8" deep or until the latch Face plate is flush with the door when installed

## Step 4 : Prepare Jamb for Strike

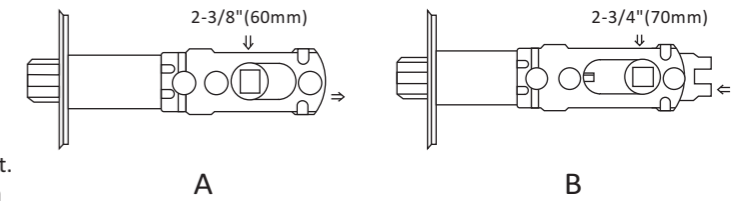
- A) Insert Latch into hole in door and Mark where it will hit the door Jamb when properly closed.
- B) Drill a 1" hole a Minimum of 1" deep into the door Jamb at the position Marked
- C) If the Door is a tight fit to the Jamb you may need to mark the strike and mortise the Jamb so the strike sits flush to the door
- D) Outline outside edges of strike Chisel 1/16" deep for strike.



# Door Lock Installation

JSC-FGS-808

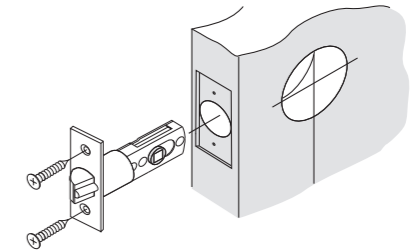
## Step 1 : Adjust Latch Backset



- Adjust the Backset to match your door:
- A) To Adjust to 2-3/4" Backset pull square latch cam out.
  - B) To Adjust to 2-3/8" Backset push square latch cam in

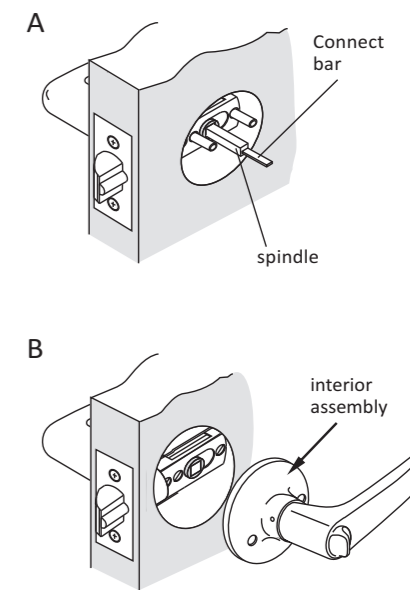
## Step 2 : Install Latch into the door

Install Latch into door positioned so that wedged shaped side of Bolt engages the strike first when closing the door



## Step 3 : Install Lock body

- A) Install exterior of lock by Inserting Lock Spindle Through Square Latch Cam and Studs through round holes until lock is Flush with the door.
- B) Install the interior of the lock by inserting it over the spindle and pressing Flush to the door. Insert screws through holes and tighten down with a hand-held screwdriver.



Note: It may be necessary to twist lock knob on interior assembly of lock to align with connector bar.

Note: Check alignment of the lock as you tighten the screws to keep lock centered over the bore Hole

## Step 4 : Install Strike

Install Strike and test from inside. Adjust Strike position if necessary, for firm Closure.

