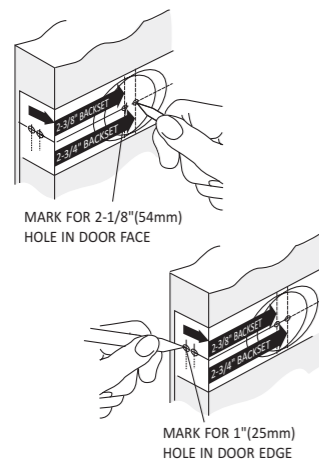


# Door Lock Instructions New Door Preparation

JSC-FGS-590

## Step 1 : Mark Door



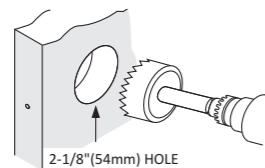
Fold Template below on Fold Line and Mark Door for Lock Bore Hole at 2-3/4" or 2-3/8" Backset and lock Edge Hole Centered on the door edge.

Note: Most exterior doors 2-3/4" Backset is used

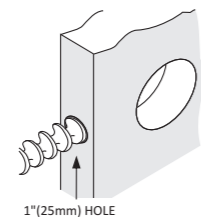
Common Standard for Lock Height off Floor is 36" above the floor. Deadbolt should be 5.5" above the entrance Knob or lever

## Step 2 : Drill Holes

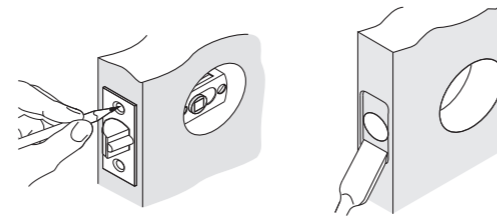
A) Drill through Door Face with 2-1/8" hole saw. Drill one side until Guide Bit punches through then Drill from through with the Hole saw from the other side to Complete the Lock Bore Hole



B) Drill the 1" Latch Hole from the door edge fully into the Lock Bore hole



## Step 3 : Mortise Door for Latch

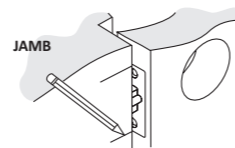


A) Insert Latch into Hole and keeping it parallel to the door Edge mark the Outline

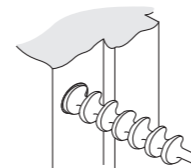
B) Mortise the Door edge with a Chisel or Router 1/8" deep or until the latch Face plate is flush with the door when installed

## Step 4 : Prepare Jamb for Strike

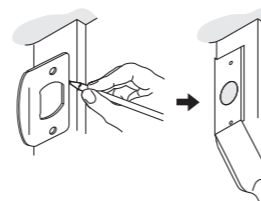
A) Insert Latch into hole in door and Mark where it will hit the door Jamb when properly closed.



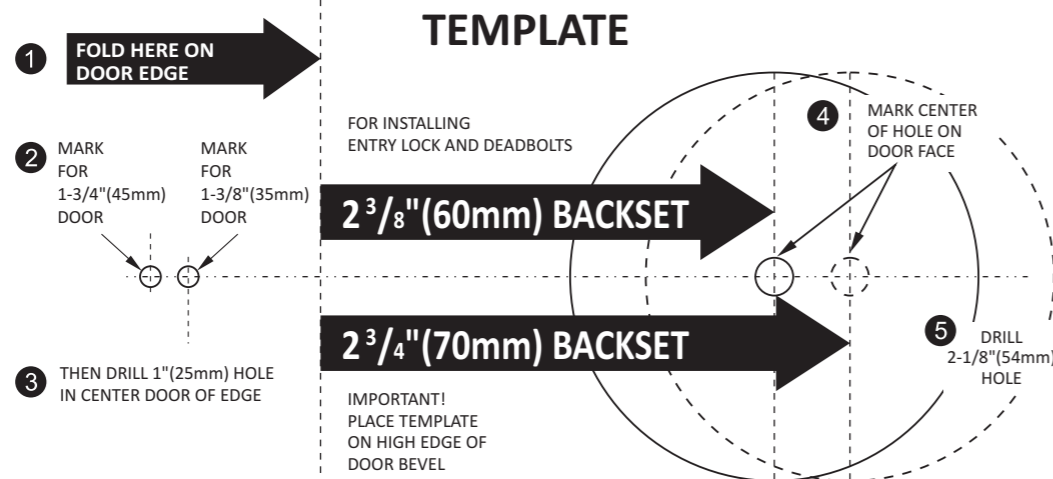
B) Drill a 1" hole a Minimum of 1" deep into the door Jamb at the position Marked



C) If the Door is a tight fit to the Jamb you may need to mark the strike and mortise the Jamb so the strike sits flush to the door



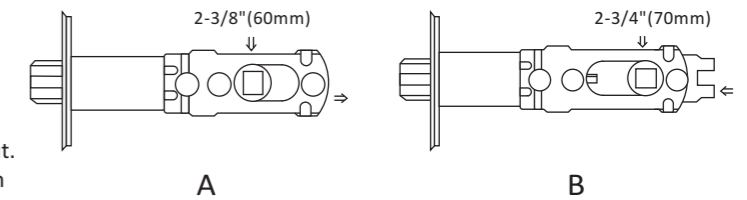
D) Outline outside edges of strike Chisel 1/16" deep for strike.



# Door Lock Installation

JSC-FGS-590

## Step 1 : Adjust Latch Backset

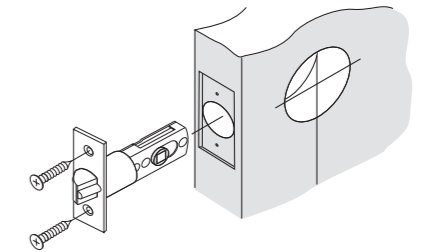


Adjust the Backset to match your door:

- A) To Adjust to 2-3/4" Backset pull square latch cam out.
- B) To Adjust to 2-3/8" Backset push square latch cam in

## Step 2 : Install Latch into the door

Install Latch into door positioned so that wedged shaped side of Bolt engages the strike first when closing the door

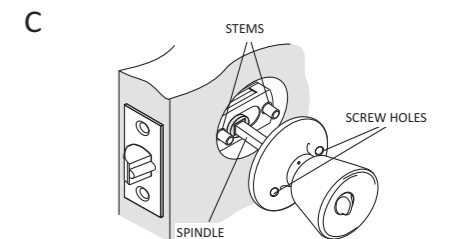
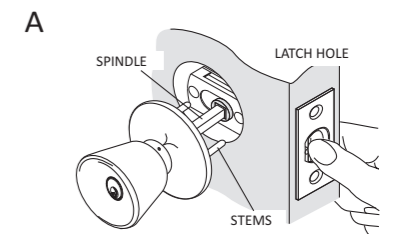


## Step 3 : Install Lock body

A) Install exterior of lock by Inserting Lock Spindle Through Square Latch Cam and Studs through round holes until lock is Flush with the door.

B) For Knobs with vertical key slots the knob should be installed with the Key Slot positioned so that the Key will be teeth up when used.

C) Install the interior of the lock by inserting it over the spindle and pressing Flush to the door. Insert screws through holes and tighten down with a hand-held screwdriver.

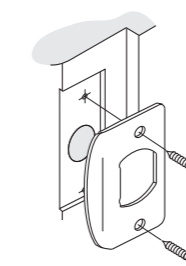


Note: It may be necessary to twist lock knob on interior assembly of lock to align with connector bar.

Note: Check alignment of the lock as you tighten the screws to keep lock centered over the bore Hole

## Step 4 : Install Strike

Install Strike and test from inside. Adjust Strike position if necessary, for firm Closure.



Entry Lock only – Ensure Security Pin Seats Properly

