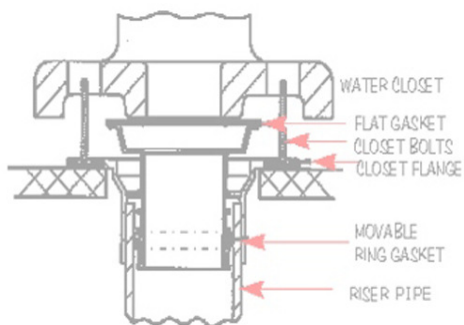
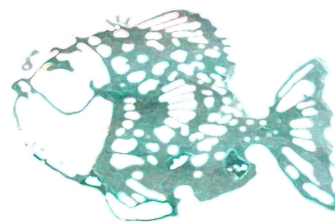


**MECHANICAL WATER CLOSET CONNECTOR**



**PREDCO**  
the way to  
go

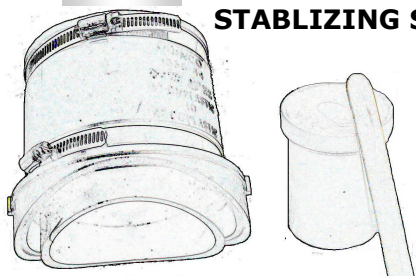


# **PREDCO**

## **Product Catalog**

### **2008**

**SEWER TAP SADDLES  
EXOTHERMIC EPOXY  
STABILIZING SADDLE BANDS**



**Innovative Sewer Connections**  
**Since 1974**  
**800.323.6188**  
**[www.plumb-bob.com](http://www.plumb-bob.com)**

**CONNECT  
with**



**1.800.323.6188  
plumb-bob.com**



## **Table of Contents**

|  |                  |
|--|------------------|
| <b>PREDCO Easy Sewer Tap System .....</b>                  | <b>3</b>         |
| <b>Sewer Tapping Machines .....</b>                        | <b>4</b>         |
| Air powered  |                  |
| Electric powered   |                  |
| <b>Shell Cutters .....</b>                                 | <b>5 &amp; 6</b> |
| Diamond Tip  |                  |
| E2PB   |                  |
| Carbide Tip  |                  |
| Gear chuck   |                  |
| E2GC   |                  |
| <b>Accessories &amp; Replacement part .....</b>            | <b>6</b>         |
| Shaft coupling with clevis pin and cotter pin              |                  |
| Portable water tank/hose                                   |                  |
| Hole cutter adapter  |                  |
| Water stub   |                  |
| Platform guide   |                  |
| Water assembly   |                  |
| 5/8" Diamond tip pilot guide                               |                  |
| Pilot shaft  |                  |
| Horizontal guide   |                  |
| <b>Sewer Tap Saddles with Epoxies and Connectors .....</b> |                  |
| Hub tap saddle   |                  |
| Donut  |                  |
| Spigot tap saddle with coupling                            |                  |
| Spigot tap saddle with shielded coupling                   |                  |
| <b>Epoxy Kits .....</b>                                    |                  |
| Two-part exothermic Epoxy                                  |                  |
| <b>Mixing Spatulas .....</b>                               |                  |
| <b>Extruded epoxy sticks .....</b>                         |                  |
| <b>Stabilizing Saddle bands .....</b>                      |                  |
| <b>Specification</b>                                       |                  |
| Material .....   |                  |
| Drilled Hole and Tap Saddle .....                          |                  |
| <b>UltraSeal</b>   |                  |
| Water closet to drain connector .....                      |                  |

CONNECT  
with



1.800.323.6188  
plumb-bob.com

## THE PREDCO EASY SEWER TAP SYSTEM

**PREDCO Sewer Tap System cuts precision holes and makes secure permanent branch connections, eliminating ground water infiltration and root growth penetration in sewer mains.**



### **A PREDCO SEWER TAPPING MACHINE IS:**

- Machine cut hole sized for Fast-Fit sewer saddles
- Designed to tap all piping materials commonly used in sewer systems
- Quick and portable units designed for one-person operation
- Efficient and does not disturb pipe or pipe bedding
- Proven reliable by many years of field use
- Affordable



**REVOLUTIONARY SANITARY CONNECTIONS  
SINCE 1974**

CONNECT  
with



1.800.323.6188  
plumb-bob.com

## SEWER TAPPING MACHINES AIR POWERED ELECTRIC POWERED



### AIR POWERED SEWER TAP MACHINE

#### A3000 Air Machine Features

- All directional drilling
- Spindle speed approx. 500 RPM
- Air consumption at Max 80 CFM at 100 psi
- Hole cutter adapter and shaft coupling
- Sturdy transport case
- Filter/Regulator/Lubricator
- 1 Quart lubrication oil
- Hoses to connect regulator to machine



### ELECTRIC POWERED SEWER TAP MACHINE

#### E1200 & E1600 Electric Machines

Electric machines come with a sturdy transportation case, and Inline 2nd surge protector and a platform guide.

|                                | <b>E1200</b>  | <b>E1600</b>  |
|--------------------------------|---------------|---------------|
| Electronic overload protection | no            | Yes           |
| 2nd inline surge plug          | Yes           | Yes           |
| Rated voltage                  | 110V          | 110V          |
| Rated current                  | 14A           | 20A           |
| Power input                    | 1600W         | 1600W         |
| Power output                   | 1080W         | 1080W         |
| Frequency                      | 50-60Hz       | 50-60Hz       |
| Gear box                       | 3-speed       | 3-speed       |
| RPMs                           | 580/1400/2900 | 580/1200/2520 |
| Platform Guide                 | Yes           | Yes           |
| Sturdy transport case          | Yes           | Yes           |

CONNECT  
with



1.800.323.6188  
plumb-bob.com

## SEWER TAPPING DIAMOND TIP SHELL CUTTERS DIAMOND TIP PILOT GUIDES

Diamond impregnated laser welded segments cut holes in: clay, concrete and ductile iron sewer pipe.

Flowing water is require during the cut to cool the segments and adds to the life of the cutter. Drilling slurry should be the color of coffee with cream to expose more diamond. Too much or not enough water will cause segment to glaze over and appear dull. They can be refreshed by spinning them in sand. Segments can be replaced if missing or completely worn down but the tube is not.

Diamond cutters are available in diameters between 4 inches and 18 inches, lengths up to 12" to accommodate the thickness of various piping materials.



PART# E2PB



Direct Thread Attachment



**PART# 1040L** 5/8" Diamond tip pilot guide 14"

**PART# OSPSL** Pilot shafts 14"

**PART# 1040R** 5/8" Diamond tip pilot guide 9"

**PART# OSPSR** Pilot shafts 9"

**PART# 1051** Replacement spring & tip



### DIAMOND TIP CUTTERS



Over All Length of Cutter Shell

| Diamond Cutter Diameters | Two bolt Attachment | Direct Thread Attachment | 6¼" OAL | 8" OAL | 12" OAL | Other OAL |   |   |           |
|--------------------------|---------------------|--------------------------|---------|--------|---------|-----------|---|---|-----------|
| 4½" DTSC                 | ✓                   |                          | 1080    | 1088   | 1012    |           | ✓ | ✓ | With E2PB |
| 4½" DTSC                 |                     | ✓                        | 4500    | 4508   | 4512    | 45XX      |   |   | ✓         |
| 5" DTSC                  | ✓                   |                          | 5000    | 5008   | 5012    |           |   |   |           |
|                          |                     | ✓                        |         |        |         |           |   |   | ✓         |
| 6½" DTSC                 | ✓                   |                          | 1100    | 1108   | 1112    |           |   |   |           |
|                          |                     | ✓                        | 6500    | 6508   | 6512    |           |   |   |           |
| 7" DTSC                  | ✓                   |                          |         |        |         |           | ✓ | ✓ |           |
| 7½" DTSC                 | ✓                   |                          |         |        |         |           | ✓ | ✓ |           |
| 5/8" DTPG                | ✓                   |                          | 1040    |        | 1040L   |           |   |   |           |
| E2PB                     |                     | ✓                        |         |        |         |           |   |   |           |

CONNECT  
with



1.800.323.6188  
plumb-bob.com

SEWER TAPPING  
CARBIDE CUTTERS  
STABILIZING BANDS

## CARBIDE TIP SHELL CUTTERS



**PART#EHG** 4½" and 6½"  
Horizontal guides used to  
support cutter when tapping  
with Electric machine



Carbide tips cut holes in: **plastic, A/C, and fiberglass pipe.**

Available in 4½ inch and 6½ inch diameters.

A gear chuck is required to attach to the air and gas machines. The Electric Machine also requires the E2GC adapter.

**PART# E2GC**

**A 4½ inch hole is required for a 4 inch saddle and a 6½ inch hole for a 6 inch saddle.**

CONNECT  
with



1.800.323.6188  
plumb-bob.com

## TAPPING MACHINE ACCESSORIES AND REPLACEMENT PARTS

### PART# A3004

Shaft coupling with clevis pin and cotter pin  
Connects Air/Gas machine to the HCA

### PART# A1060

Hole cutter adapter (HCA) Joins the power head, to a diamond tipped shell cutters together while supplying cooling water during operation.

### PART# A1163

 included with Part#A1060

Water stub delivers water to cutter—can be replaced with a diamond tip pilot guide when drilling horizontally or with out a platform guide. Inserts into HCA with a set screw \*

### PART# 1040L

 5/8" Diamond tip pilot guide 14"

### PART# OSPSL

 Pilot shafts 14"

### PART# 1040R

 5/8" Diamond tip pilot guide 9"

### PART# OSPSR

 Pilot shafts 9"

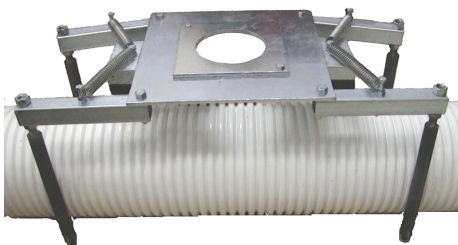
### PART# 1051

 Replacement spring & tip

### PART# ESPG

#### EASY SET PLATFORM GUIDE

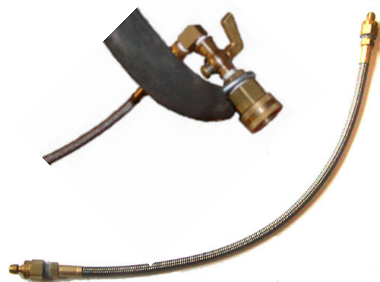
Removable template accommodates either 4½ or 6½ in cutter . Spring arms clamps around pipe up to 22".



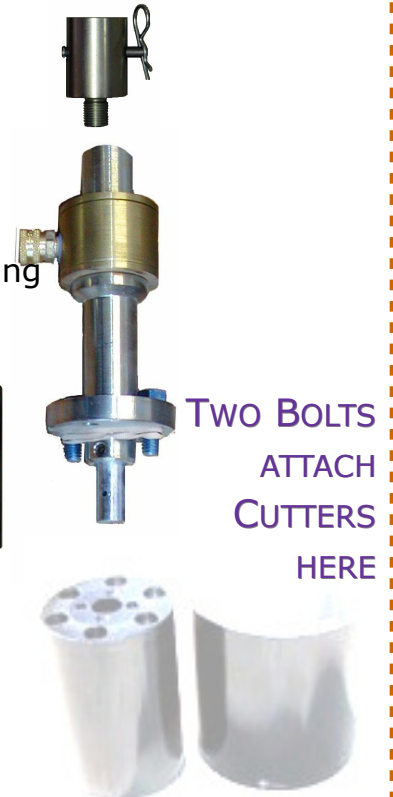
### Part#A1170

#### WATER ASSEMBLY

Stainless steel mesh hose with quick disconnect ends



For larger pipe or horizontal cuts replace the water stub with a 5/8" diamond tip pilot guide



TWO BOLTS  
ATTACH  
CUTTERS  
HERE

### PART# 1181

Portable water tank with 10 foot hoses and connector.



CONNECT  
with



1.800.323.6188  
plumb-bob.com

## PREDCO Sewer Tap Saddles Epoxies Connectors



**PREDCO Sewer Tap Saddles molded in hardened PVC attach to clay, concrete, ductile iron, PVC, A/C , and fiberglass sewer mains with PREDCO two-part exothermic epoxy.**

**Complies with ASTM D2680-D2751**

### **SEWER TAP SADDLES AVAILABLE IN TWO SIZES AND TWO STYLES**

- 4 inch and 6 inch sizes
- Hub style saddle — connect with donut
- Spigot style saddle — connect with coupling
  - available with optional stainless steel shielded coupling

The full line of Fernco connectors are also available

### **EPOXY KITS AVAILABLE IN FOUR SIZES AND HANDY STICKS**

- Amounts from four ounces of resin and four ounces of hardener in one jar to 32 ounces of resin and 32 ounces of hardener in separate jars
- 3½ inch and 7 inch epoxy stick



CONNECT  
with



1.800.323.6188  
plumb-bob.com

# SEWER TAP SADDLES FERNCO CONNECTORS STABILIZING SADDLE BANDS

## HUB TAP SADDLES (connect with donut)

- 4" HUB TAP SADDLE** PART# **HTS4/E** - Hub saddle 4" with epoxy  
**HTS4/LE** - Hub saddle 4" with large epoxy
- 6" HUB TAP SADDLE** PART# **HTS6/LE** - Hub saddle 6" with large epoxy  
**HTS6/XLE** - Hub saddle 6" with extra large epoxy

Hub Tap Saddle



## DONUTS \*needed to connect hub saddle to branch connecting

- TO CONNECT**
- DWV Schedule 40** to hub saddle 490-405 — 4"  
614-605 — 6"
- S&D SDR 35** to hub saddle 490-401 — 4"  
614-601 — 6"



All Fernco product available

## SPIGOT TAP SADDLES WITH COUPLING connects spigot tap saddle to branch connection\*\*

### 4" Spigot Tap Saddle

- PART# **STS4/E/1056-44** - Spigot saddle 4" with epoxy & coupling  
**STS4/LE/1056-44** - Spigot saddle 4" with large epoxy & coupling

### 6" Spigot Tap Saddle

- PART# **STS6/LE/1056-66** - Spigot saddle 6" with large epoxy & coupling  
**STS6/XLE/1056-66** - Spigot saddle 6" with extra large epoxy & coupling  
*1056 series fit Schedule 40 or SDR35 pipe other size coupling available*



Spigot Tap Saddle  
with coupling

## SPIGOT TAP SADDLES WITH STAINLESS STEEL SHIELDED COUPLING

### 4" Spigot Tap Saddle with Shielded Coupling

- PART# **STS4/E/1056-44RC**-Spigot saddle 4" with epoxy & shielded cplg.  
**STS4/LE/1056-44RC**-Spigot saddle 4" with large epoxy & shielded cplg

### 6" Spigot Tap Saddle with Shielded Coupling

- PART# **STS6/LE/1056-66RC**-Spigot saddle 6" with large epoxy & shielded cplg.  
**STS6/XLE/1056-66RC**-Spigot saddle 6" with extra large epoxy & shielded cplg.



Spigot Tap Saddle  
with shielded  
coupling

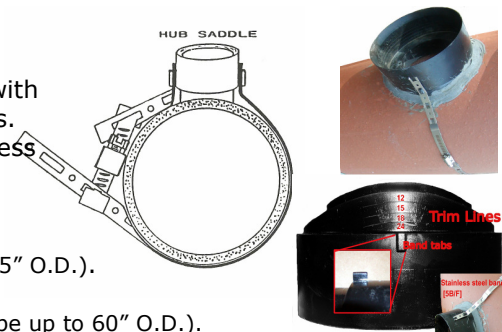
## STABILIZING SADDLE BANDS

For increased stability during back filling operation. Encircle your pipe with the PREDCO stainless steel banding that attaches to the tap saddle tabs. Housing and band are 300 series stainless steel. Screw Type 410 stainless steel and tightens with a slotted screwdriver or 5/16" hex nut-driver. Not rated for torque. Temperature range is -100° to +500° F.

Part#

5B/F—Five feet of stainless steel strap And one fastener (for pipe up to 15" O.D.).

22B/F—Twenty-two feet of stainless steel strap and one fastener (for pipe up to 60" O.D.).



CONNECT  
with



1.800.323.6188  
plumb-bob.com

## EPOXY KITS MIXING SPATULAS EPOXY STICKS

### TWO-PART EXOTHERMIC EPOXY KITS

Adheres tap saddles to clay, concrete, ductile iron, plastic, A/C, and fiberglass pipe.

**PART#**

**PE44:** 4 ounces of resin and 4 ounces of hardener  
— in one jar

**PLE88:** 8 ounces of resin and 8 ounces of hardener  
— in one jar

**PXLE1616:** 16 ounces of resin and 16 ounces of hardener  
— in two separate jars

**PSSE3232:** 32 ounces of resin and 32 ounces of hardener  
— in two separate jars



### EPOXY MIXING SPATULAS

**PART#**

**EMS-HDPE:** Reusable economical plastic.

**EMS-T 6x2:** Reusable Stainless steel spatula with wood handle.

**EMS-Sq 7½x3:** Reusable Stainless steel spatula with wood handle, fits in large jars.



### EPOXY STICKS

Extruded equal parts of resin and hardener. Break off amount needed and mix in hand. Adheres to many surfaces such as metal, wood, plastic, glass, ceramic and many other materials.

**PART#**

PES3.5 - 3½" stick

PES7.0 - 7" stick



CONNECT  
with



1.800.323.6188  
plumb-bob.com

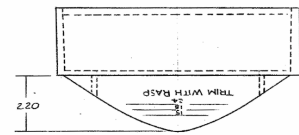
## SPECIFICATIONS MATERIAL SEWER TAP HOLE SEWER TAP SADDLE

### MATERIAL SPECIFICATION FOR SEWER TAP SADDLES

PREDCO Tap Saddles are manufactured in accordance with the Official Standards and Practices of Custom Plastic Molders as set forth by the Society of the Plastics Industry. This item is molded to normal commercial tolerances.

The material used in the Fast-Fit Sewer Tap Saddles are supplied by major companies; the unit is sold on the basis that it will meet or exceed the following tests:

| ASTM   |              | Test method |
|--|--------------|-------------|
| Tensile strength @ 73 degrees F                            | 4500 PSI     | D 638       |
| Tensile modulus @ 73 degrees F                             | 240,000 PSI  | D 638       |
| Flexural modulus @ 73 degrees F                            | 250,000 PSI  | D 790       |
| Izod impact @ 73 degrees F                                 | 5.0 ft/lbs   | D 256       |
| Heat deflecting Temp. 264                                  | 200 degree F | D 648       |
| PSI Fiber stress   |              |             |
| Compressive modulus @ 73 degrees F                         | 140,000 PSI  | D 695       |
| Specific gravity   | 1.04         |             |
| Complies with ASTM D2680-D2751-<br>(Bldg. Drain and Sewer) |              |             |



**SEWER TAP HOLE SPECIFICATION:** Sewer taps shall be made to ensure a flexible, watertight connection between the sewer main or collection system sewer and the building. The hole in the sewer main, to receive the tap saddle, shall be made using non-impact rotary equipment using diamond or carbide tipped cutting drills. The tapping machine shall be capable of cutting holes, sized to receive a sewer saddle, in concrete, vitrified clay, cast iron, ductile iron, PVC, and ABS, plastic, A/C and fiberglass pipe without tunneling or disruption of the pipe bedding, equal to the tapping machine systems manufactured by Plumbing Research Engineering and Development

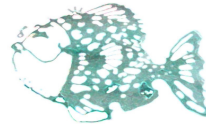
**SEWER TAP SADDLE SPECIFICATION:** The tap saddle shall be of a design that is attached to the sewer main with a fast curing, exothermic epoxy that can be used in wet or dry conditions. No part of the tap saddle shall protrude into the bore or waterway of the pipe. The saddle shall be manufactured of a material that is designed for sewer service. The saddle shall be of the design that will accommodate the connection of branch using piping material of PVC, ABS, cast iron, vitrified clay, concrete or A/C with a fitting of the compression, mechanical or sealing type. The tap saddle shall be equal to the saddles manufactured by Plumbing Research Engineering and Development Company

CONNECT  
with



1.800.323.6188  
plumb-bob.com

PREDCO  
The way  
to go



# PREDCO ULTRA SEAL WATER CLOSET CONNECTOR



**UltraSeal** connects the water closet to the drainage system with a gas and air tight seal that will not leak from pipe or fixture movement. Withstands plunger pressure. For floor outlet and wall-hung closets.

## FEATURES

- Reliable PVC construction
- Life time warranty against manufacturer defects
- Gas and water tight
- Flexible - accommodates fixture, piping and floor movement
- Easy to install - No special tools required
- Works on cast iron soil pipe, plastic, copper, and steel
- Endures heat from radiant flooring
- Will seal to closet flanges below floor level
- Reusable
- Will not stain floor or floor covering
- Will not restrict flow and works well with 1.6 gallon flush toilets
- Code compliant
- Two sizes - 3" for 3" toilet risers and 4" for 4" toilet risers
- The "Three Plus" for when your not sure

Check to make sure the ring gasket is in the proper groove to give you a tight fit

Lubricate the lower gasket (WD 40 or dish soap works well)

Insert the UltraSeal into the drain pipe through the closet flange with a twisting motion

Leave the UltraSeal about 1" above floor level

Install the floor bolt as usual

